



Print this Calibration Test page first!

Size: Height: 170.00, Bust: 90.00, Waist: 68.50, Hips: 95.00
Pattern Name: -

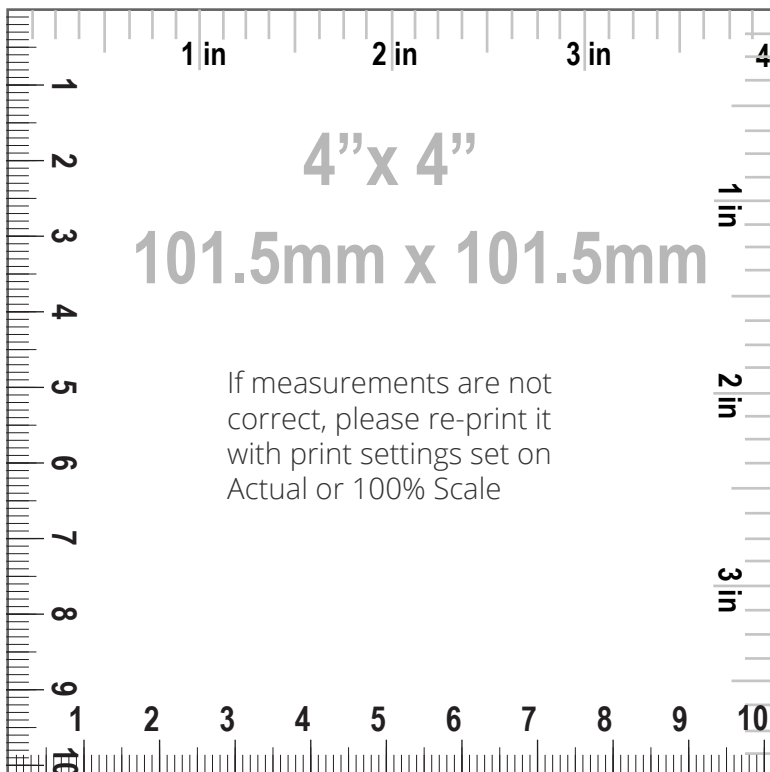
Notes

HOW TO PRINT



Printing

1. Once your Calibration Test Page has been printed, measure the 4"x 4" (10cm) scale box with a ruler. If the lengths match, you can confidently print your pattern. If the rulers do not match, set your print settings to 100% or Actual and retry.



Cutting

Your printouts will always have a dashed border to perfectly match your sheets. Cut off the right edge of each page. Be careful not to cut beyond the dashed mark, otherwise your patterns will not align accurately.



Taping

1. Group each sheet by the second number marked on each page i.e. in a group 1, there are: 1/1, 2/1, 3/1, 4/1, etc. In a group 2: 1/2, 2/2 etc.
2. Place page 1/1 on top of the page 2/1, overlapping the right side edge. Match corners and crosses and secure with a pin or tape. Then use a scotch tape to permanently attach the sheets together.



Pattern Name: -

Seam Allowance: 1.00 (0.39 in)

Pattern pieces:

- | | |
|--|---|
| 1, CENTER FRONT, MAIN FABRIC: Cut 1 | 5, LEFT CENTER BACK, MAIN FABRIC: Cut 1 |
| 2, RIGHT SIDE FRONT, MAIN FABRIC: Cut 1 | 6, RIGHT SIDE BACK, MAIN FABRIC: Cut 1 |
| 3, LEFT SIDE FRONT, MAIN FABRIC: Cut 1 | 7, LEFT SIDE BACK, MAIN FABRIC: Cut 1 |
| 4, RIGHT CENTER BACK, MAIN FABRIC: Cut 1 | |

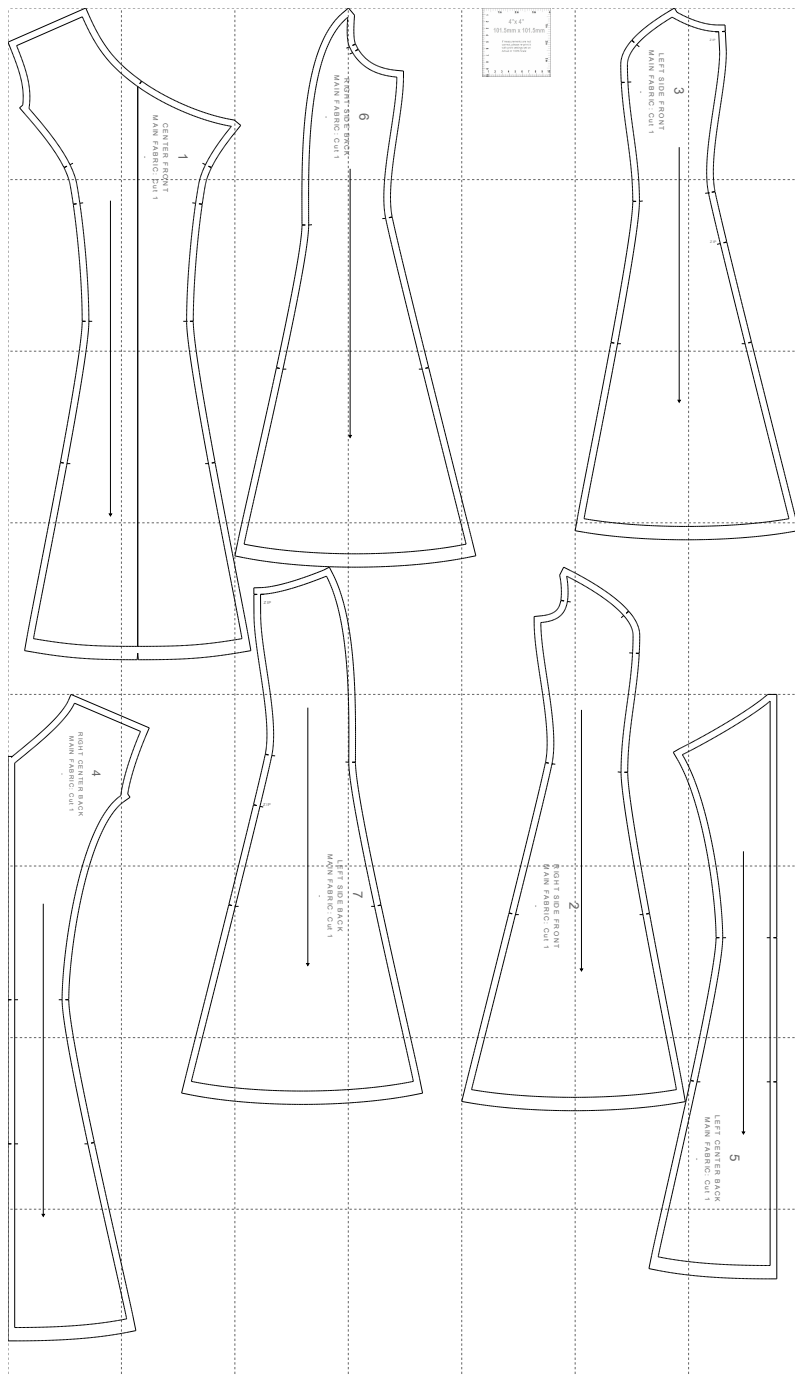
Pattern Specs (Circumferences are divided by 2):

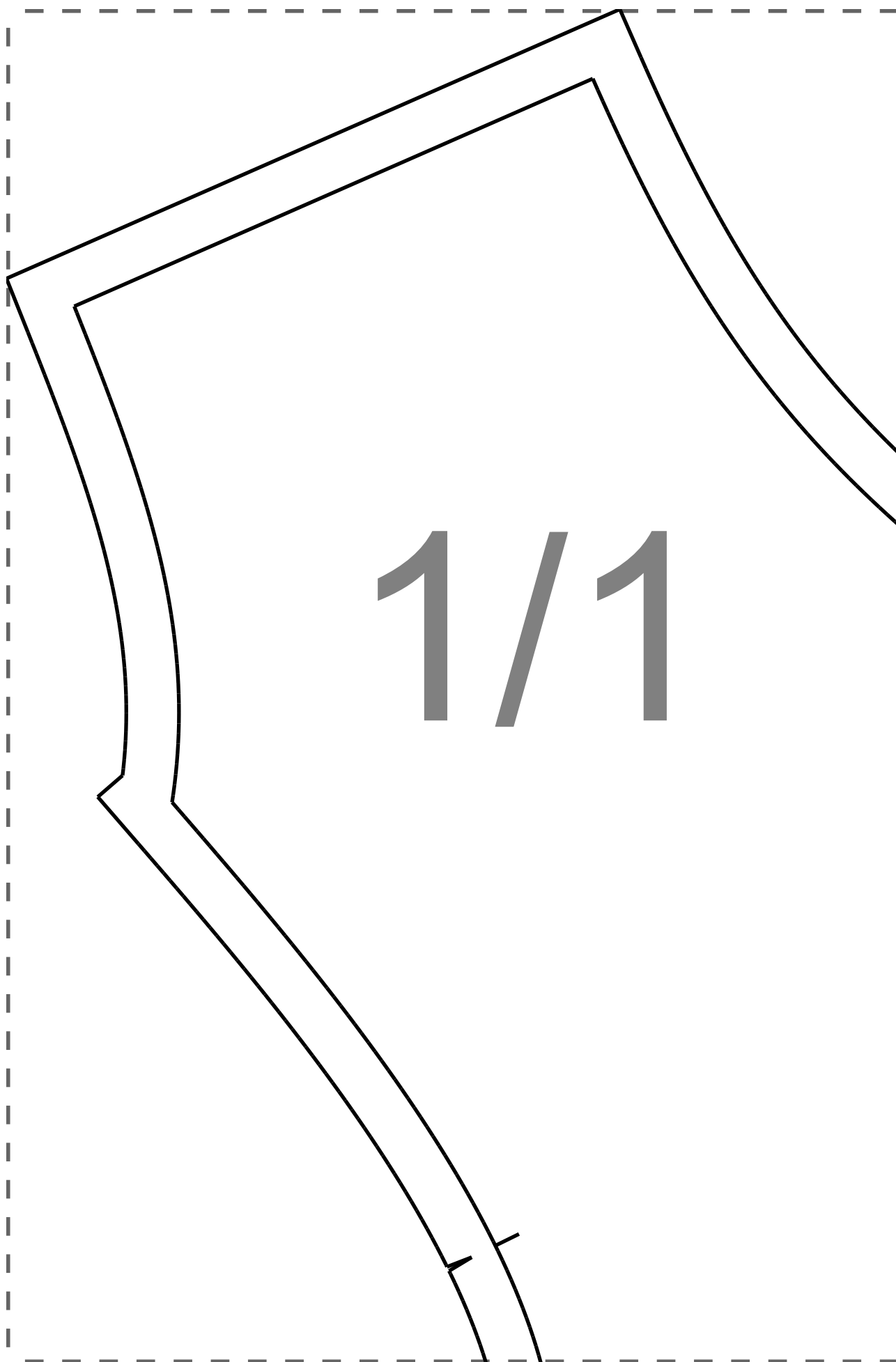
- | | |
|--|--|
| 1. Dress side invisible zipper length 35.00 (13.78 in) | 11. Low hips 49.93 (19.66 in) |
| 2. Front length from HPS to hem 94.70 (37.28 in) | 12. Hemline sweep 96.36 (37.94 in) |
| 3. Across chest 46.58 (18.34 in) | 13. Armhole length front 19.11 (7.52 in) |
| 4. Center front length to hem 83.86 (33.02 in) | 14. Armhole length back 23.42 (9.22 in) |
| 5. Center back length to hem 84.57 (33.30 in) | 15. Front neck drop 10.84 (4.27 in) |
| 6. Across front 30.45 (11.99 in) | 16. Back neck drop 9.44 (3.72 in) |
| 7. Across back 31.78 (12.51 in) | 17. Shoulder width 10.76 (4.24 in) |
| 8. Across shoulders 36.99 (14.56 in) | 18. Apex to apex 18.24 (7.18 in) |
| 9. Side seam 71.56 (28.17 in) | |
| 10. Waist 36.29 (14.29 in) | |



Paper Size: A4;

Print Actual Size (100% Scale);





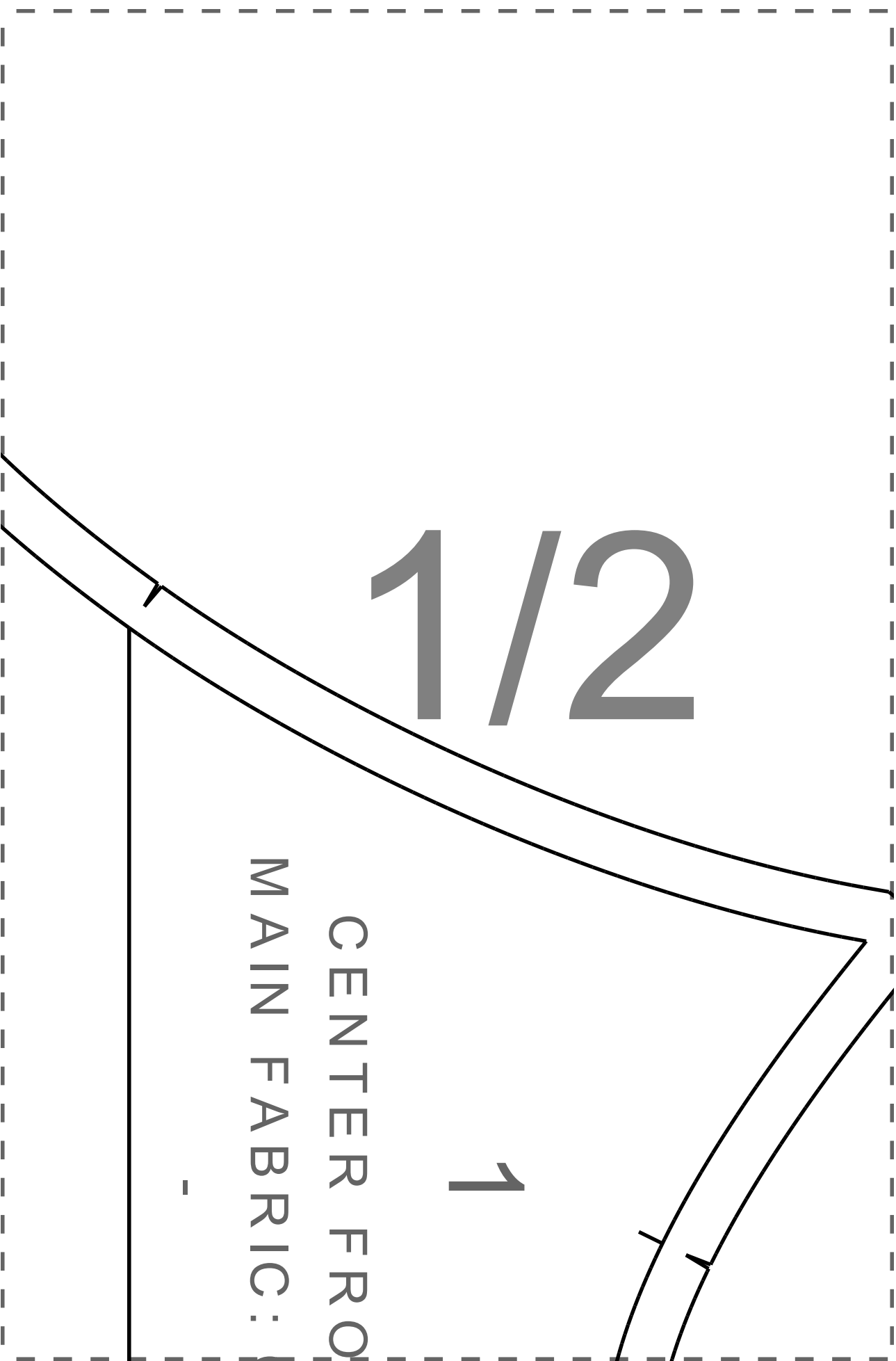
1/1

1/2

1

CENTER FRO
MAIN FABRIC:

-

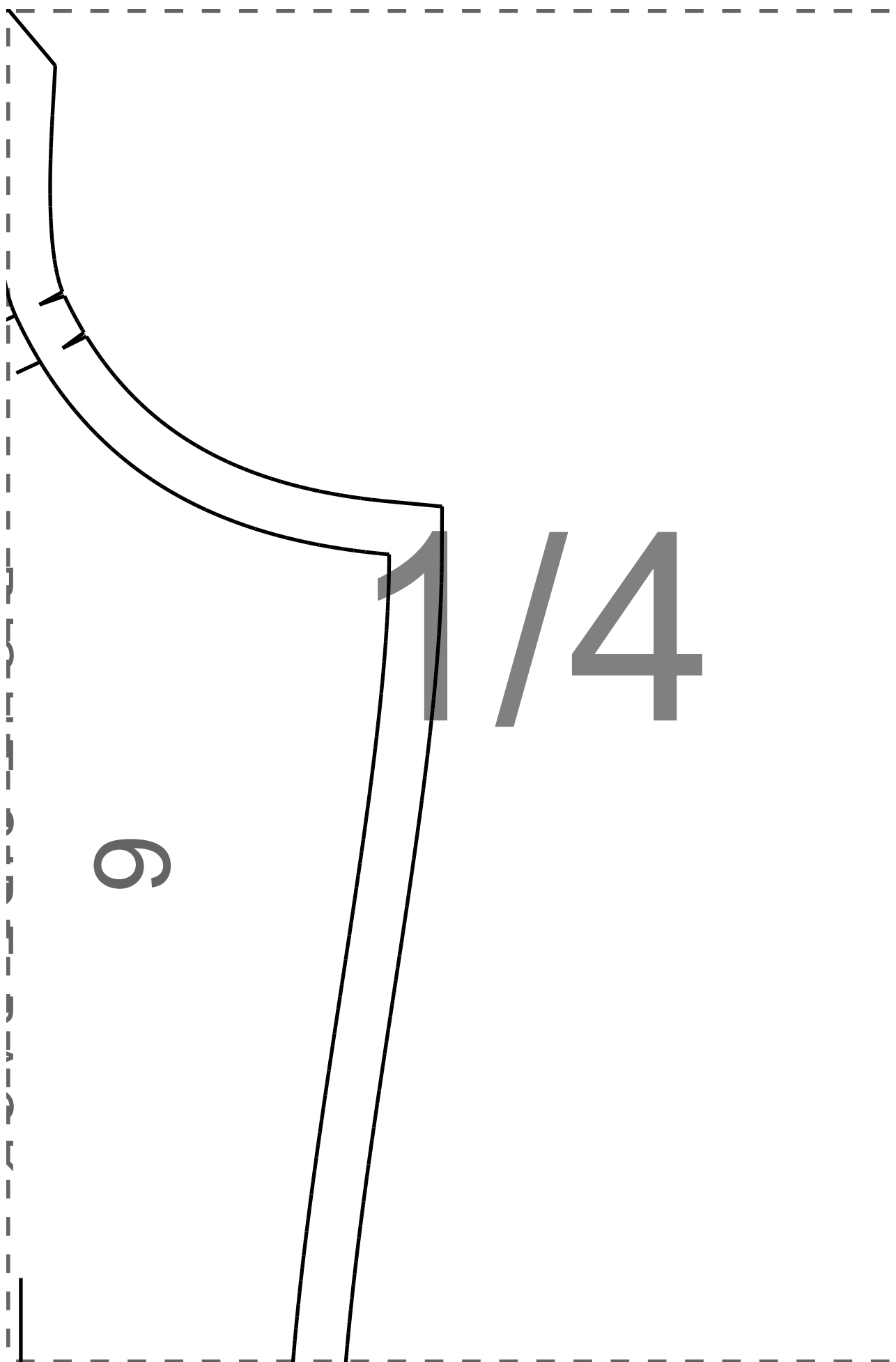


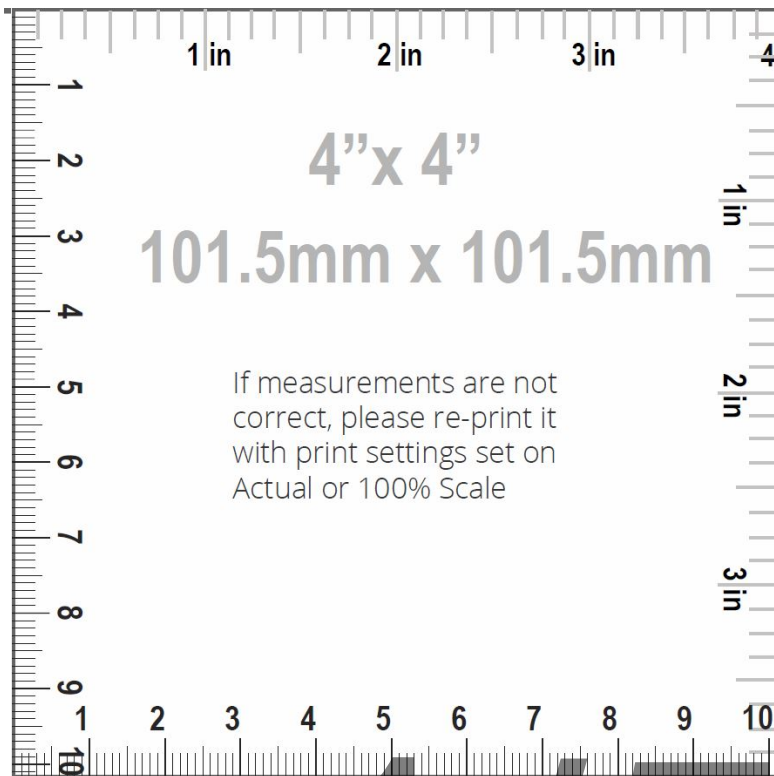
RIGHT-SIDE BACK

MAIN FABRIC: Cut 1

1/3





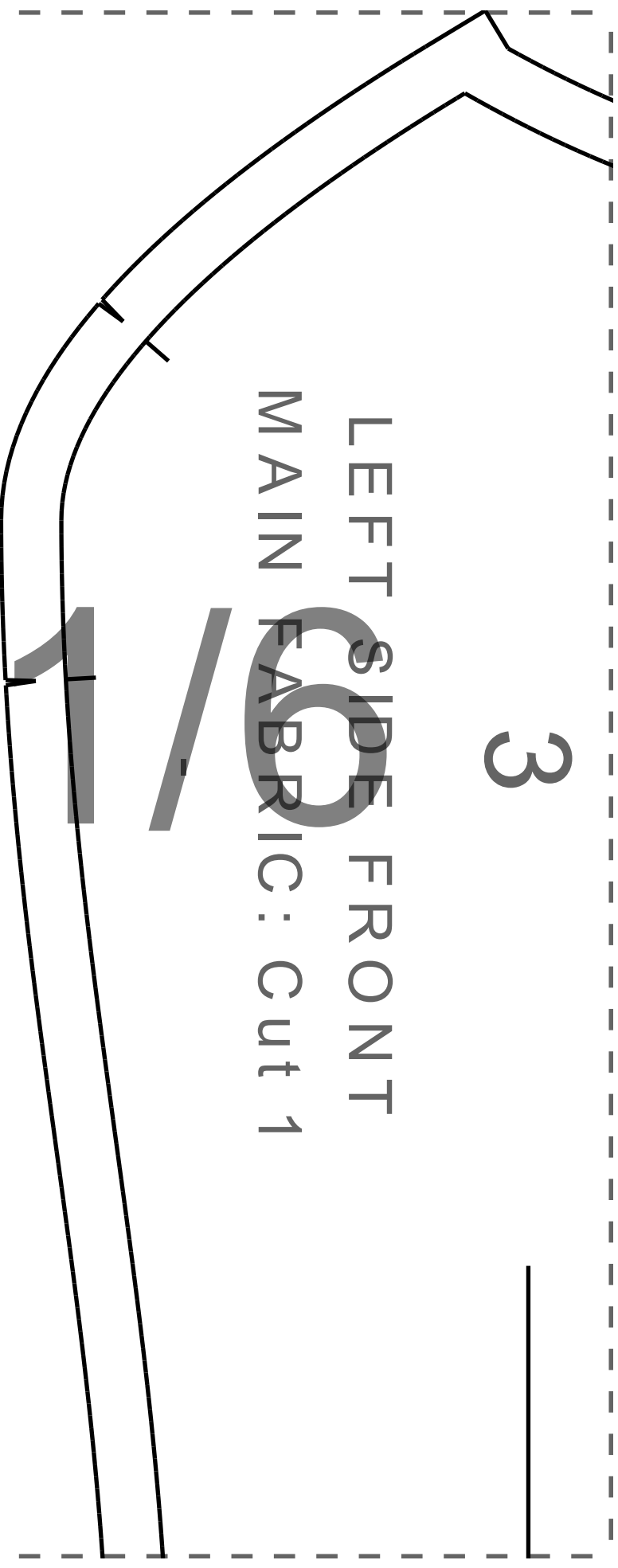


1/5

3

LEFT SIDE FRONT
MAIN FABRIC: Cut 1

1/2



ZIP

1/7

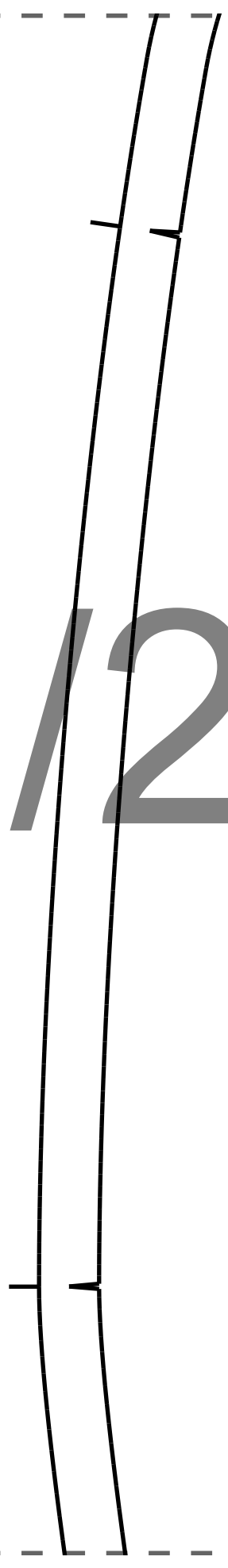
2/1



2/2

NT

cut 1



2/3

2/4

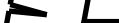


2/6

ZIP

2/7

3/1

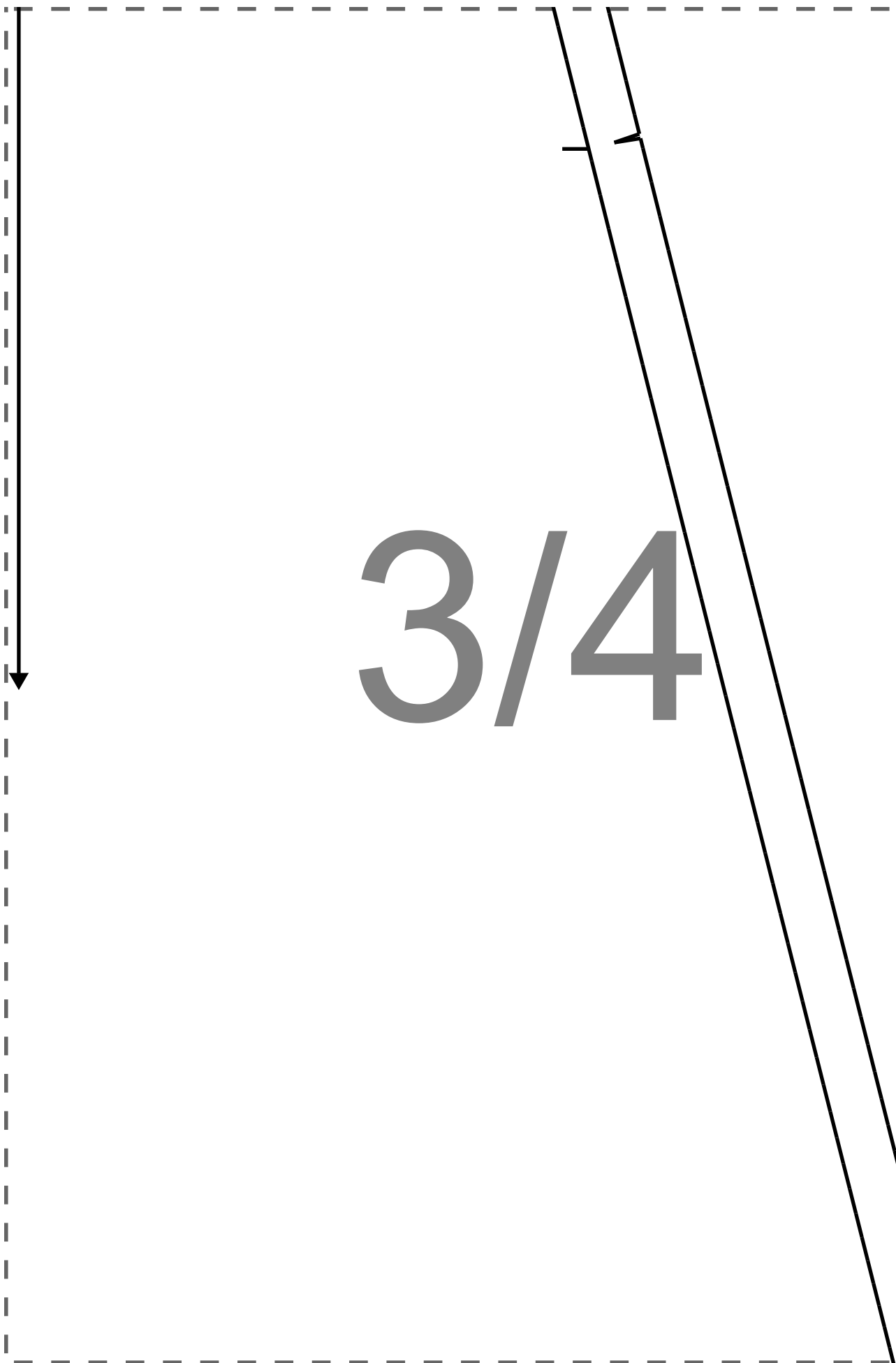


3/2

1



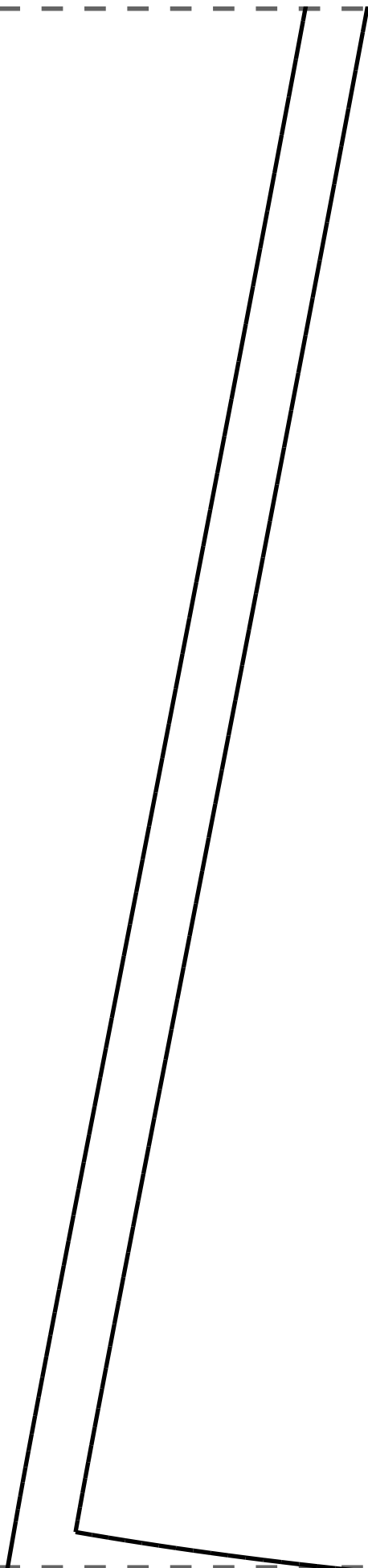
3/3



3/5



3/6



3/7



4/1



4/2

ZIP

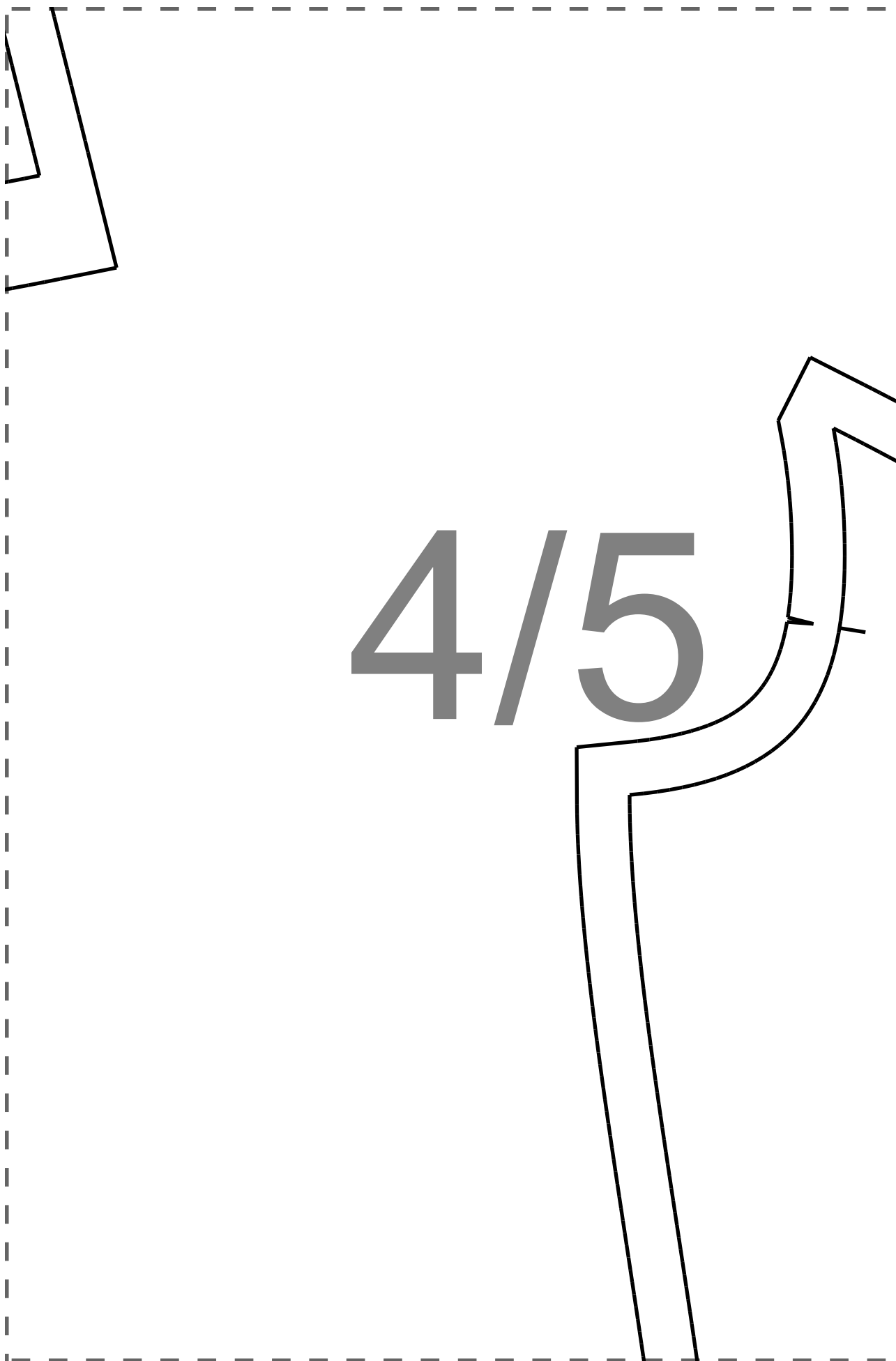
4/3

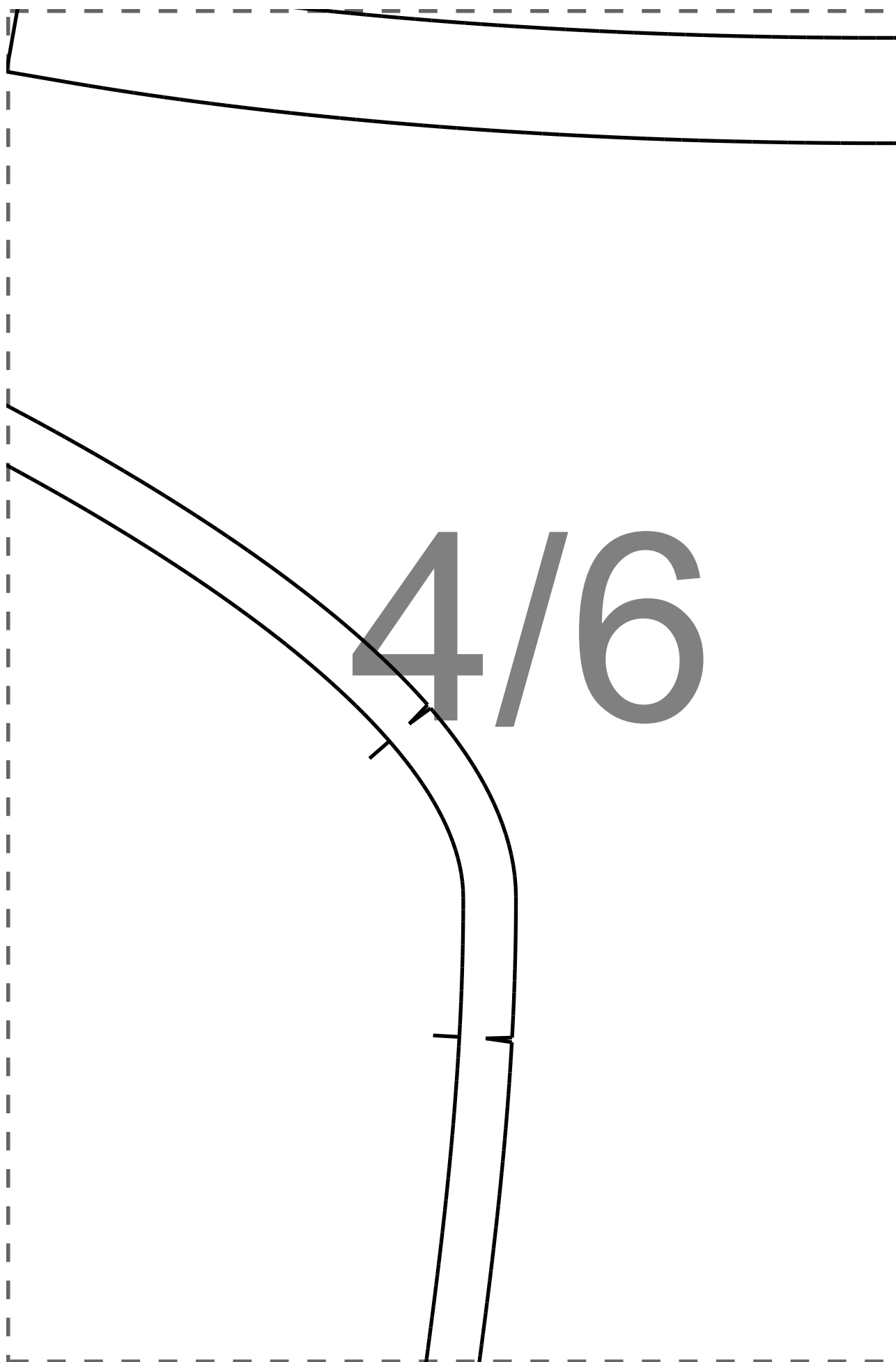


A hand-drawn diagram of a rectangle with a dashed border. Inside the rectangle, there are two horizontal lines that curve slightly upwards from left to right. In the center of the rectangle, the fraction $4/4$ is written in a large, bold, gray font. On the left side of the rectangle, there is a vertical line segment that starts near the bottom and extends upwards, ending near the middle of the rectangle.

$4/4$

4/5

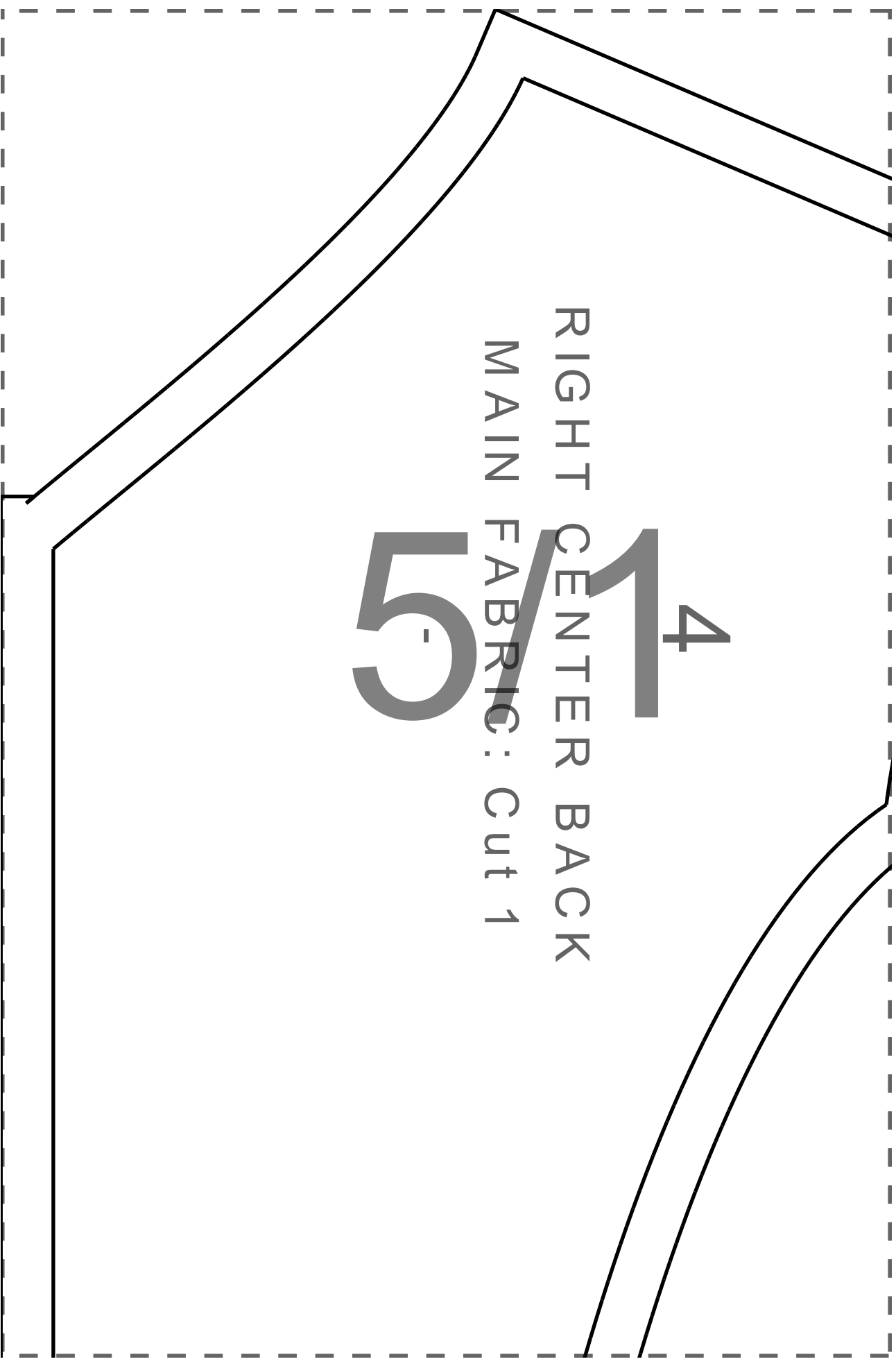




4/6



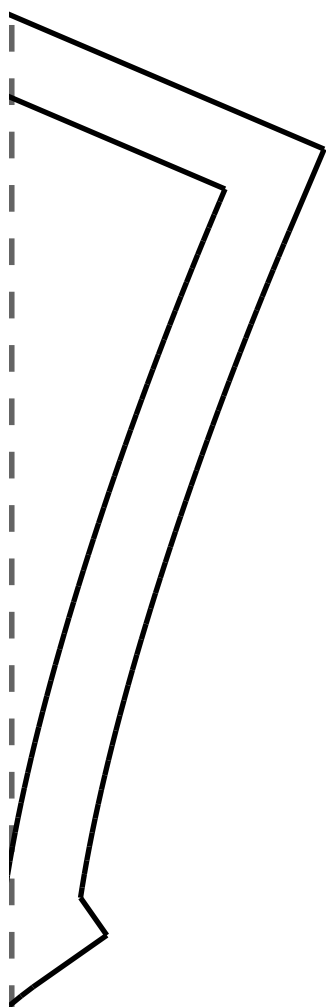
4/7



RIGHT CENTER BACK

MAIN FABRIC: Cut 1

5



5/2

5/3

ZIP

MA

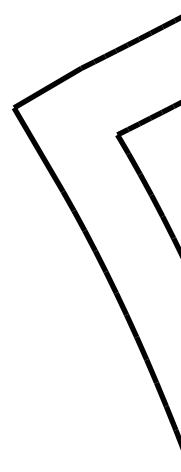
L

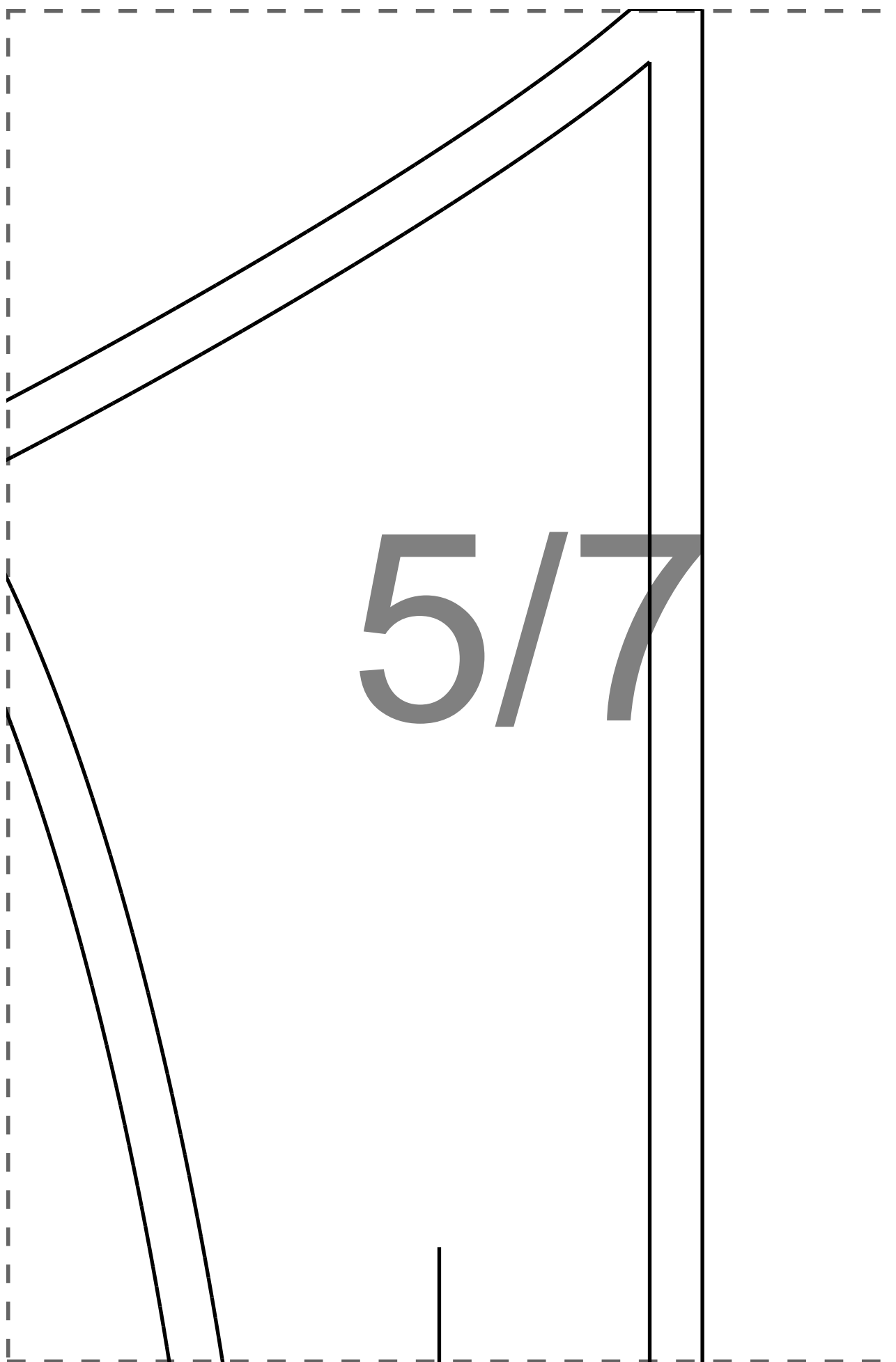


$5/4$

5/5

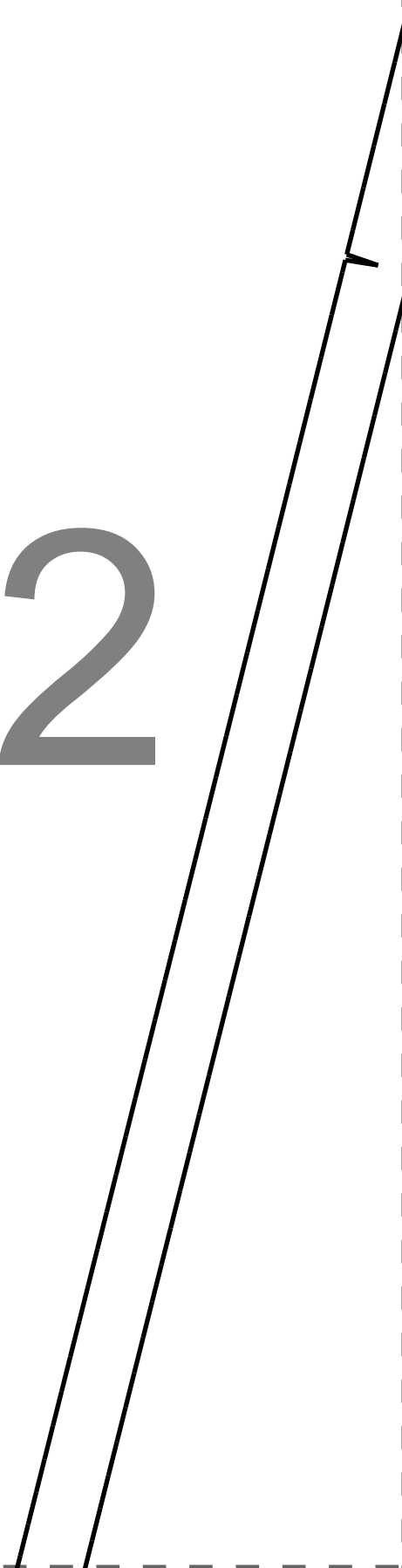
5/6





6/1

6/2



LEFT SIDE BACK

IN FABRIC: Cut 1

6/3



2

6/4

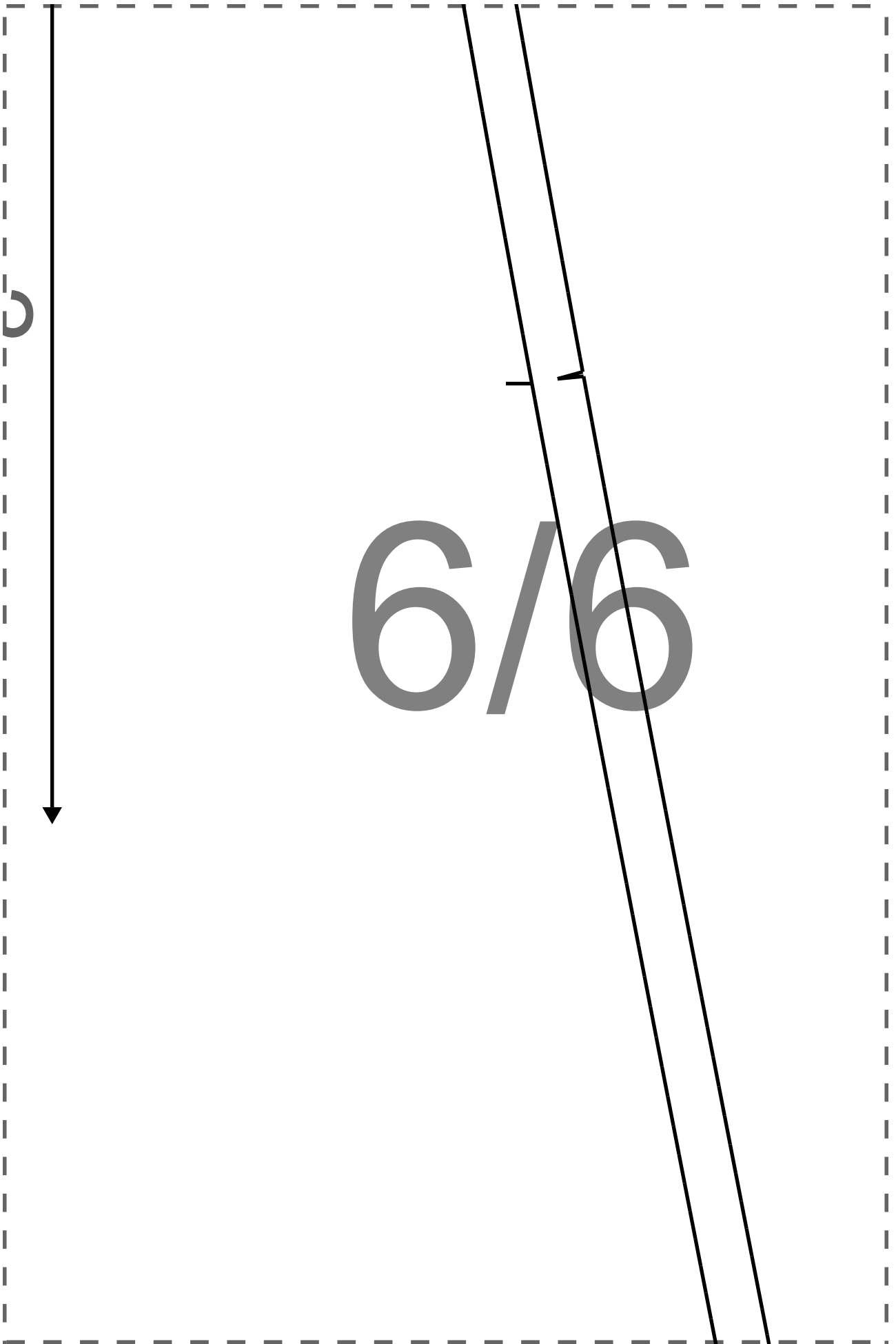
2

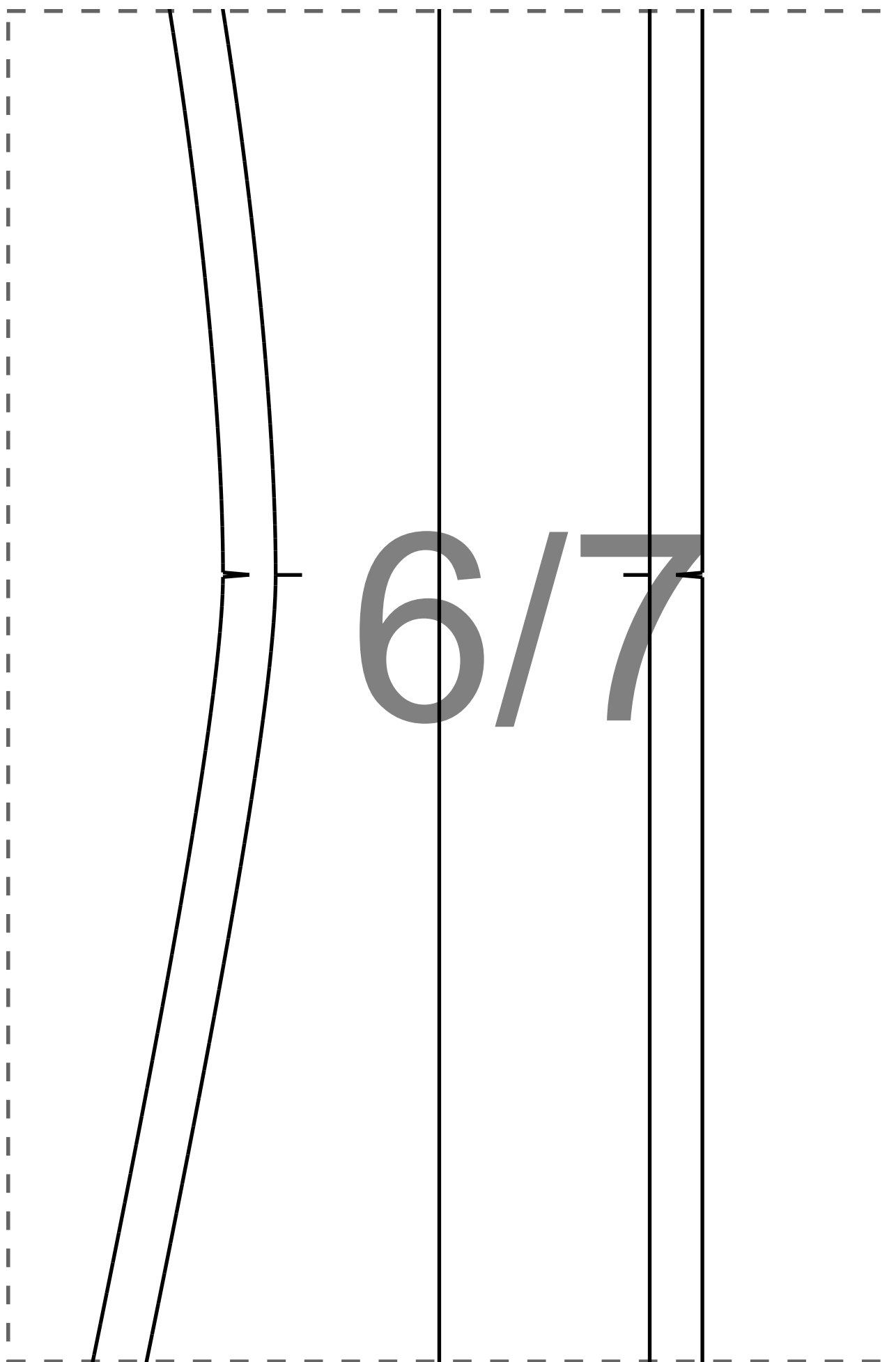
RIGHT SIDE FRONT

MAIN FABRIC: Cut 1

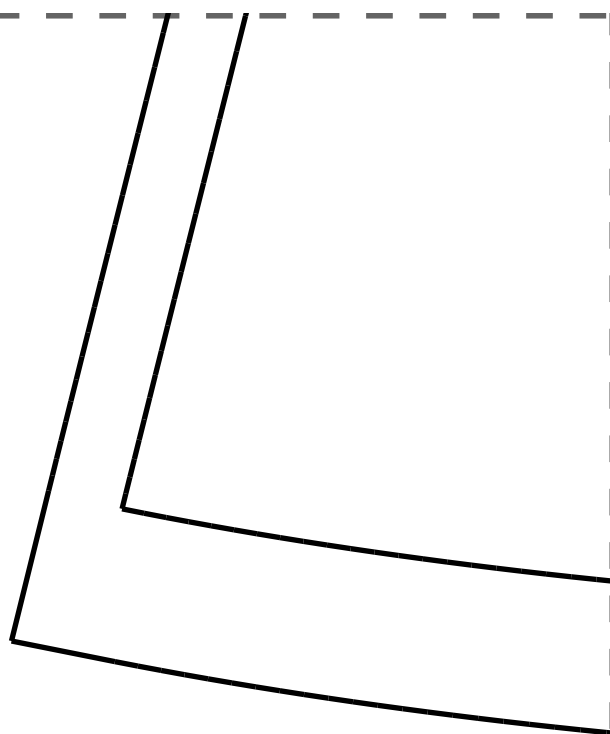
5/6

1





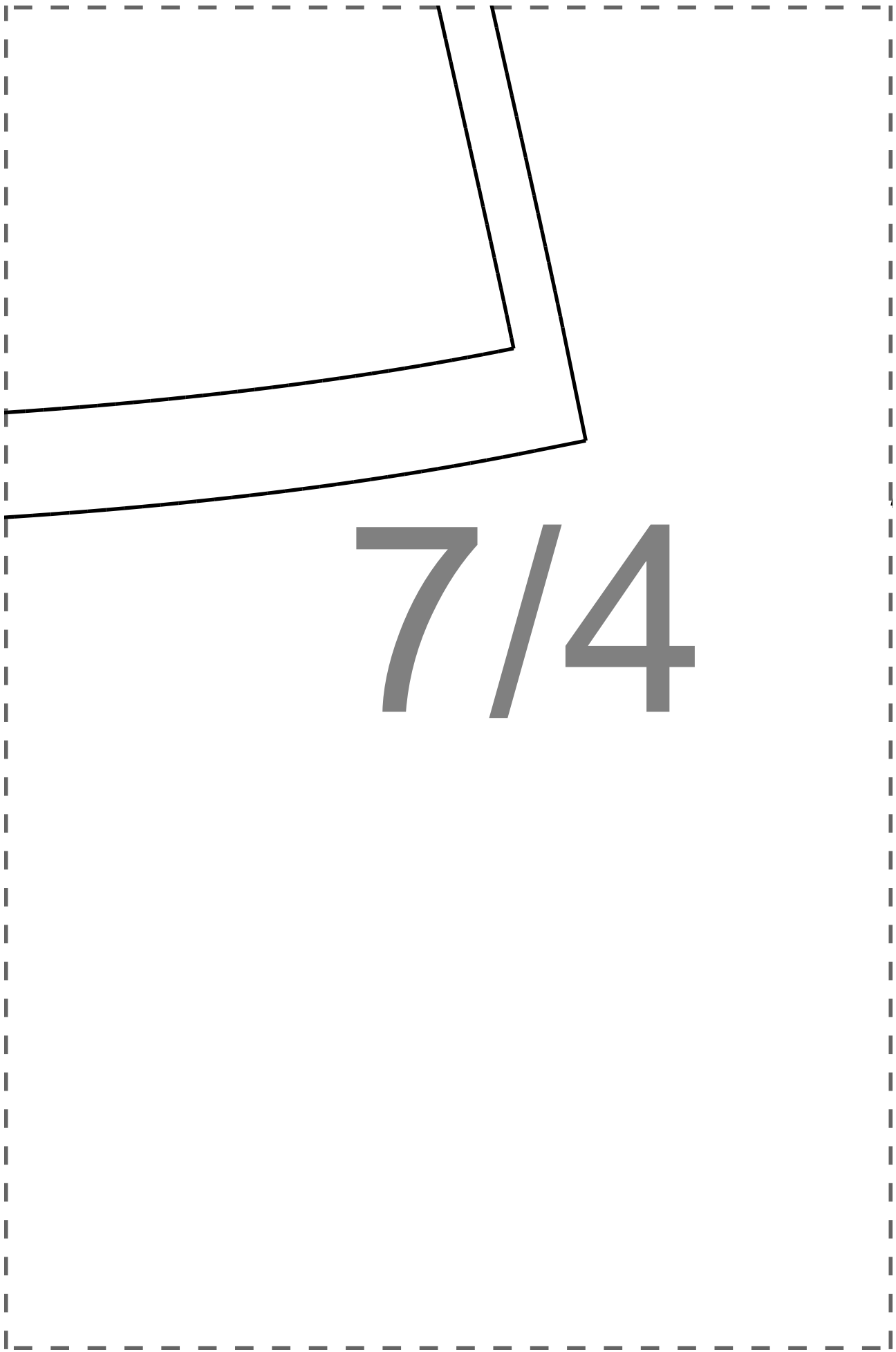
7/1

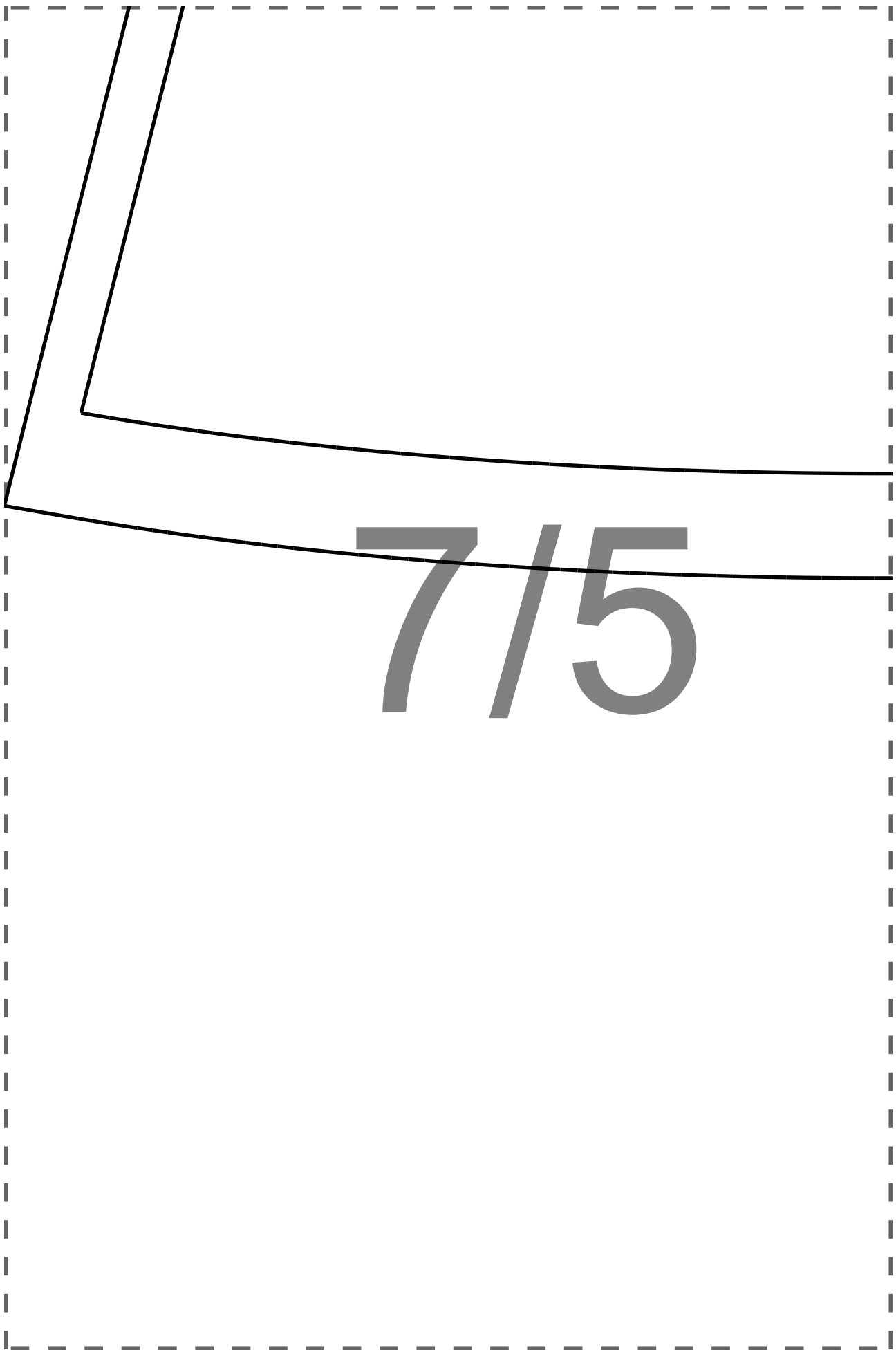


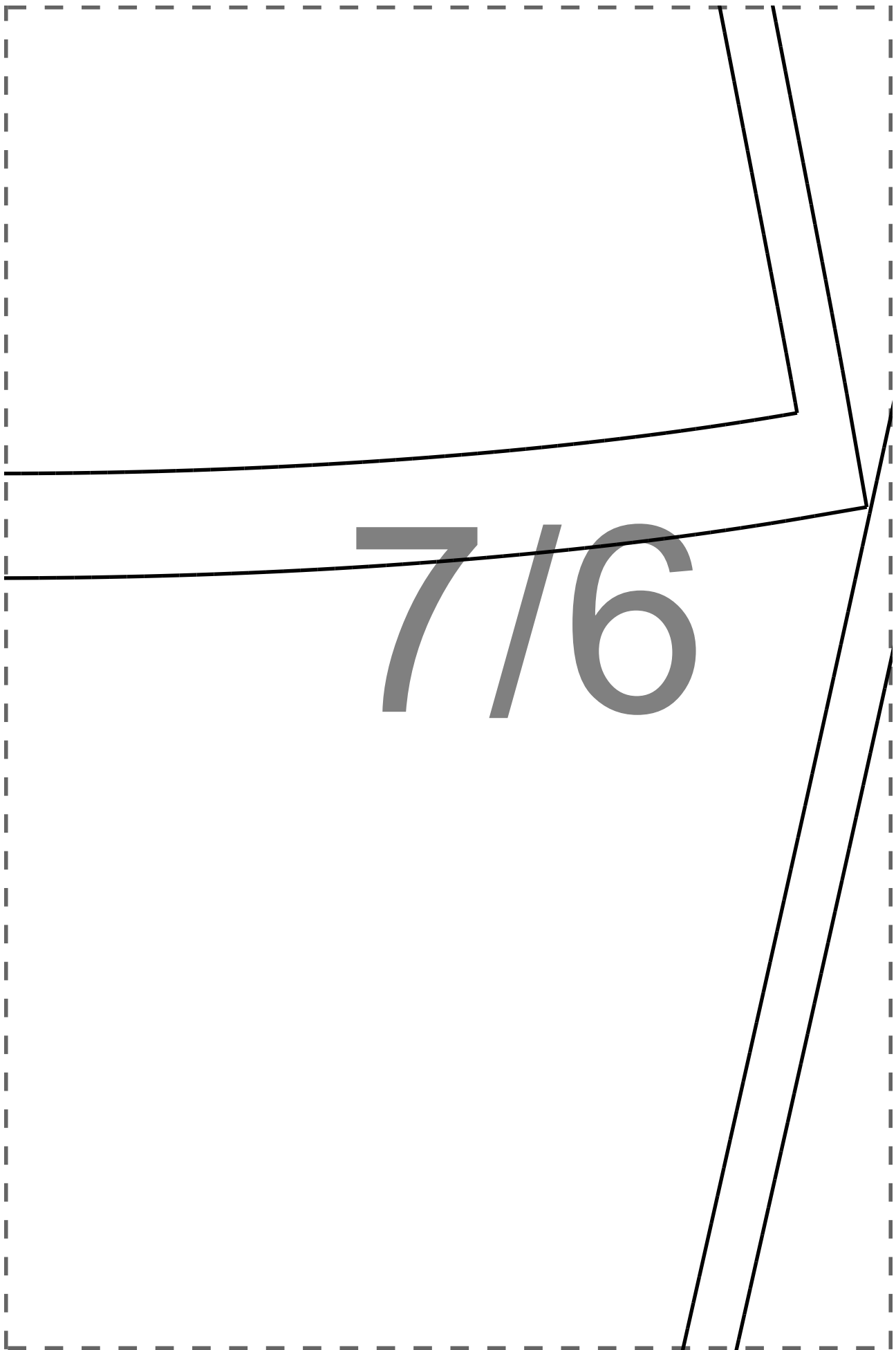
7/2

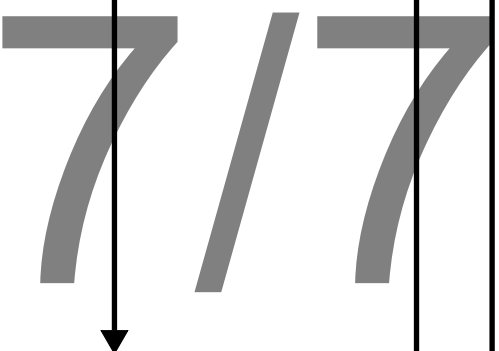


7/3



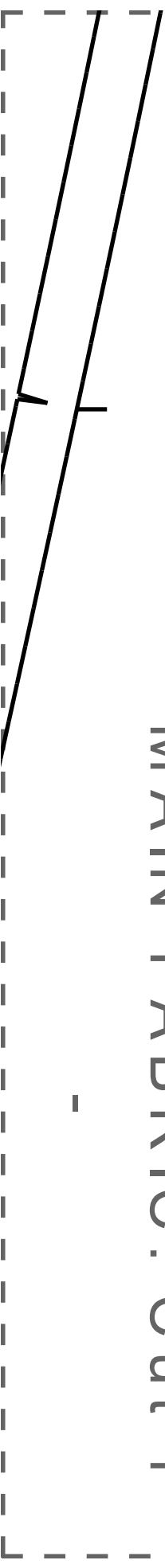






5

LEFT CENTER BACK
MAIN FABRIC: Cut 1

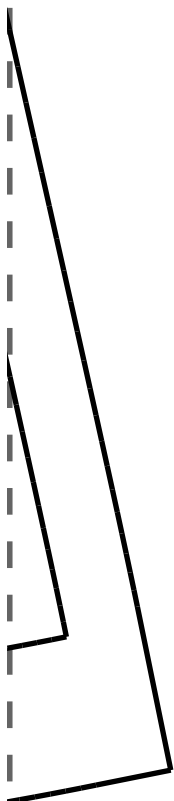




The diagram shows a rectangular sheet with dashed lines indicating fold lines. A solid line runs vertically on the left side, and another solid line runs horizontally near the bottom. On the right side, two parallel diagonal lines are shown. A small downward-pointing arrow is located at the top center. The text '8/1' is centered in the middle of the sheet.

8/1

8/2





8/6

