



Print this Calibration Test page first!

Size: Height: 170.00, Bust: 90.00, Waist: 68.50, Hips: 95.00
Pattern Name: -

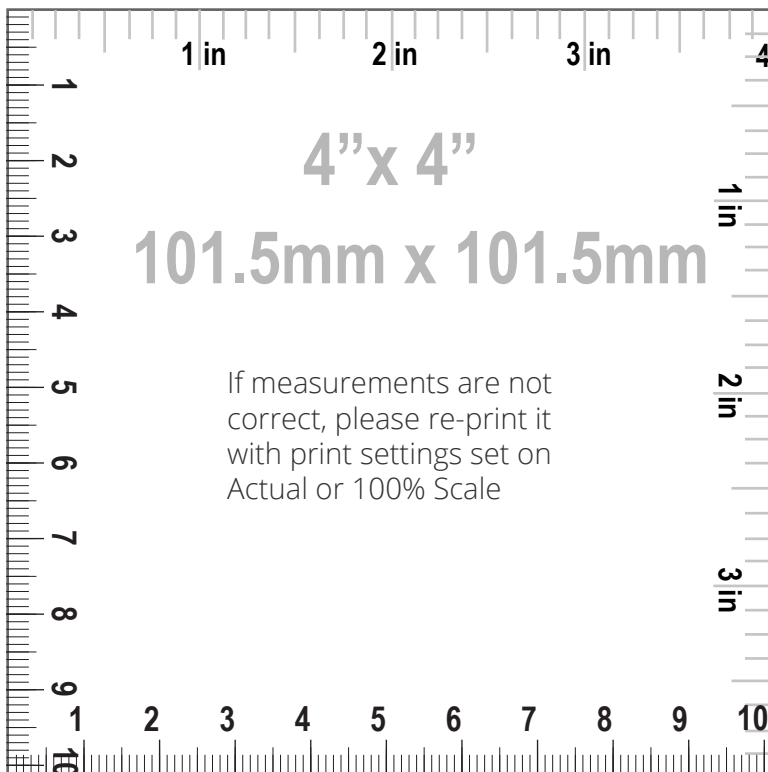
Notes

HOW TO PRINT



Printing

1. Once your Calibration Test Page has been printed, measure the 4"x 4" (10cm) scale box with a ruler. If the lengths match, you can confidently print your pattern. If the rulers do not match, set your print settings to 100% or Actual and retry.



Cutting

Your printouts will always have a dashed border to perfectly match your sheets. Cut off the right edge of each page. Be careful not to cut beyond the dashed mark, otherwise your patterns will not align accurately.



Taping

1. Group each sheet by the second number marked on each page i.e. in a group 1, there are: 1/1, 2/1, 3/1, 4/1, etc. In a group 2: 1/2, 2/2 etc.
2. Place page 1/1 on top of the page 2/1, overlapping the right side edge. Match corners and crosses and secure with a pin or tape. Then use a scotch tape to permanently attach the sheets together.



Pattern Name: -

Seam Allowance: 1.00 (0.39 in)

Pattern pieces:

1, FRONT, MAIN FABRIC: Cut 1

2, BACK, MAIN FABRIC: Cut 2

3, STRAP, MAIN FABRIC: Cut 2, FUSIBLE
INTERFACING: Cut 2

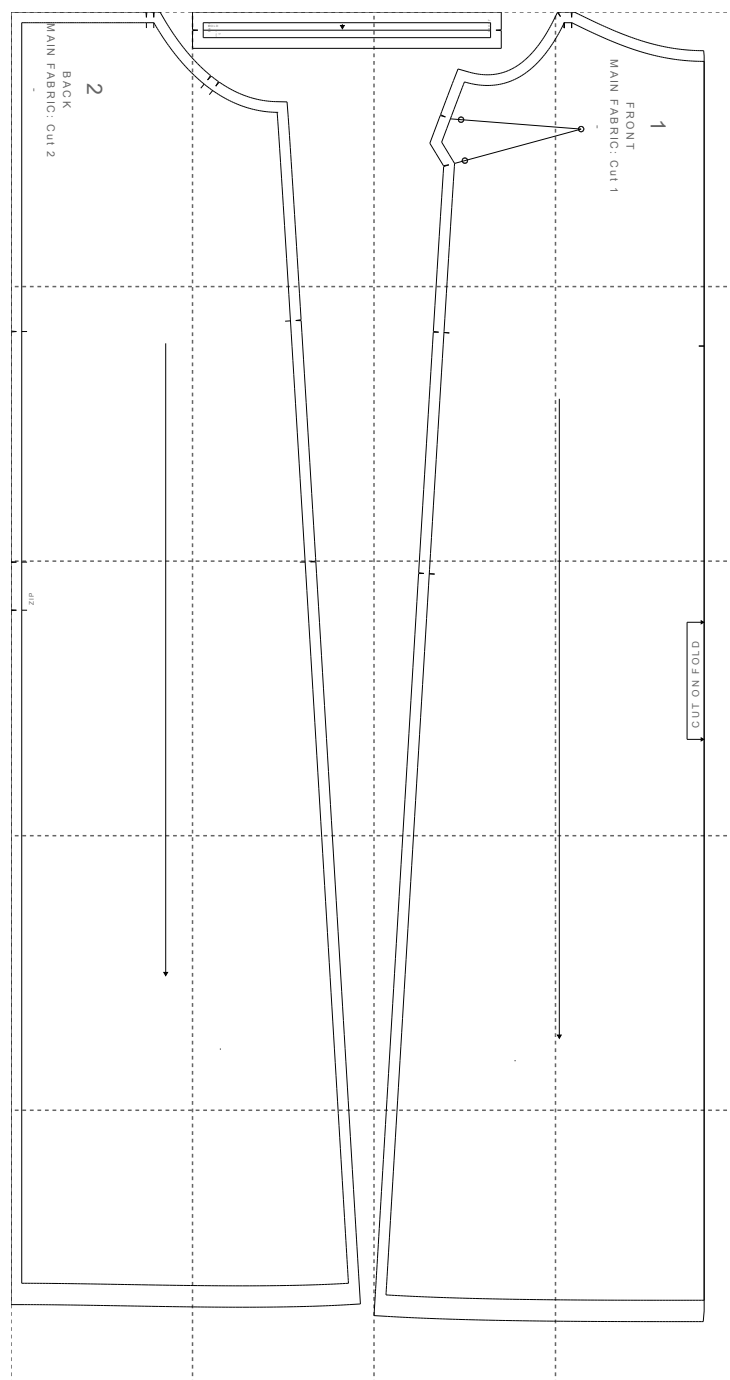
Pattern Specs (Circumferences are divided by 2):

- | | |
|---|--|
| 1. Back invisible zipper length 55.00 (21.65 in) | 10. Hips 50.79 (20.00 in) |
| 2. Front length from HPS to hem 135.34 (53.28 in) | 11. Hemline sweep 60.39 (23.78 in) |
| 3. Across chest 47.02 (18.51 in) | 12. Front neck drop 19.36 (7.62 in) |
| 4. Center front length to hem 115.98 (45.66 in) | 13. Back neck drop 16.00 (6.30 in) |
| 5. Center back length to hem 118.01 (46.46 in) | 14. Apex to apex 19.00 (7.48 in) |
| 6. Across front 26.19 (10.31 in) | 15. Bust dart to bust dart 23.03 (9.07 in) |
| 7. Across back 24.74 (9.74 in) | 16. Strap width 0.70 (0.28 in) |
| 8. Side seam 109.82 (43.24 in) | 17. Strap length 26.90 (10.59 in) |
| 9. Waist 37.33 (14.70 in) | |



Paper Size: A4;

Print Actual Size (100% Scale);

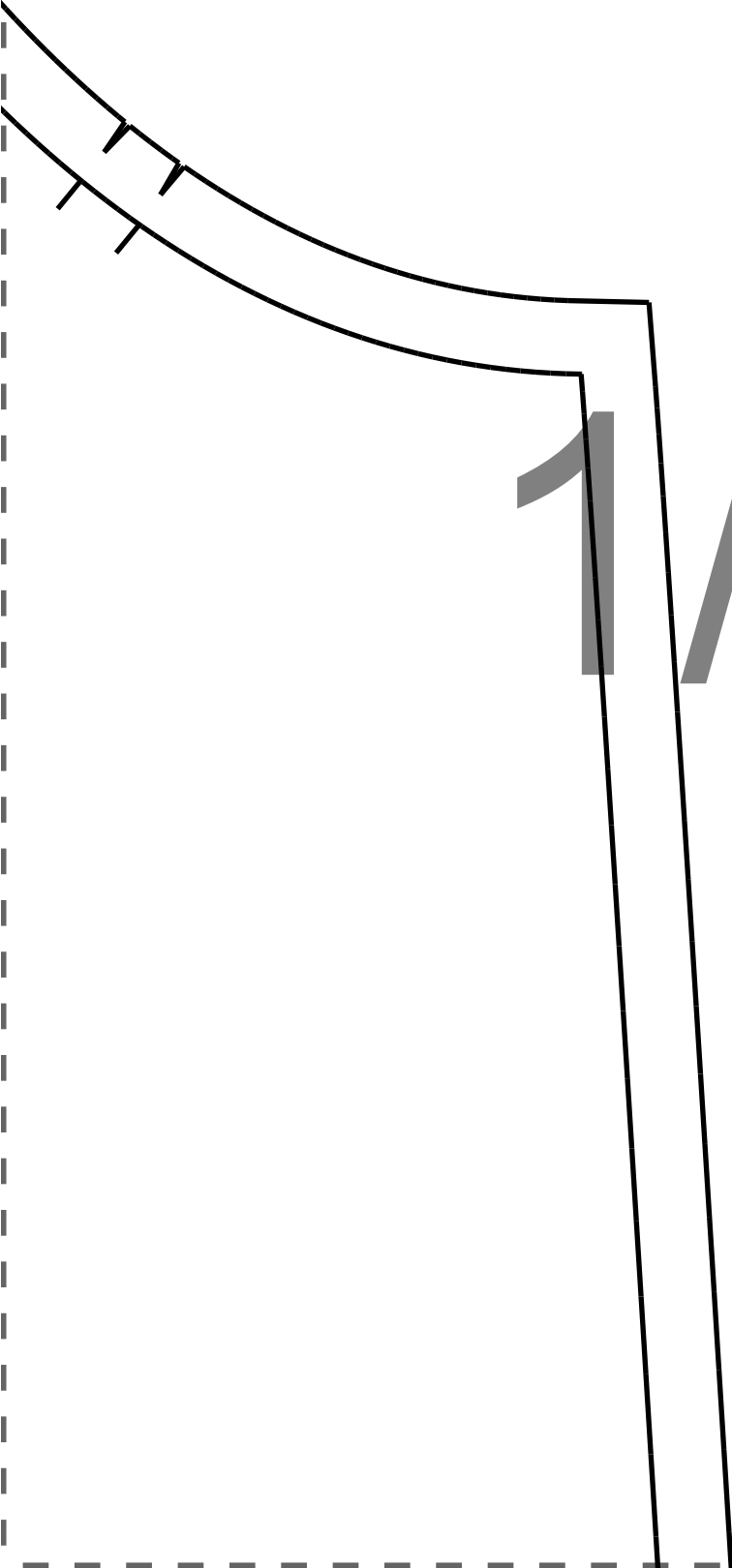
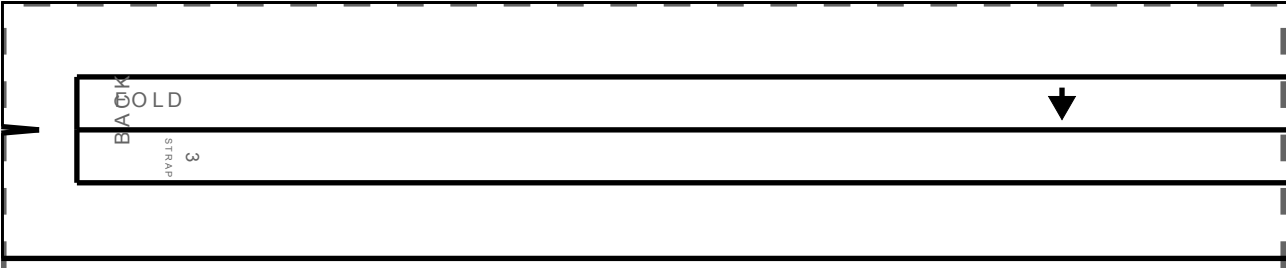


2 1/1

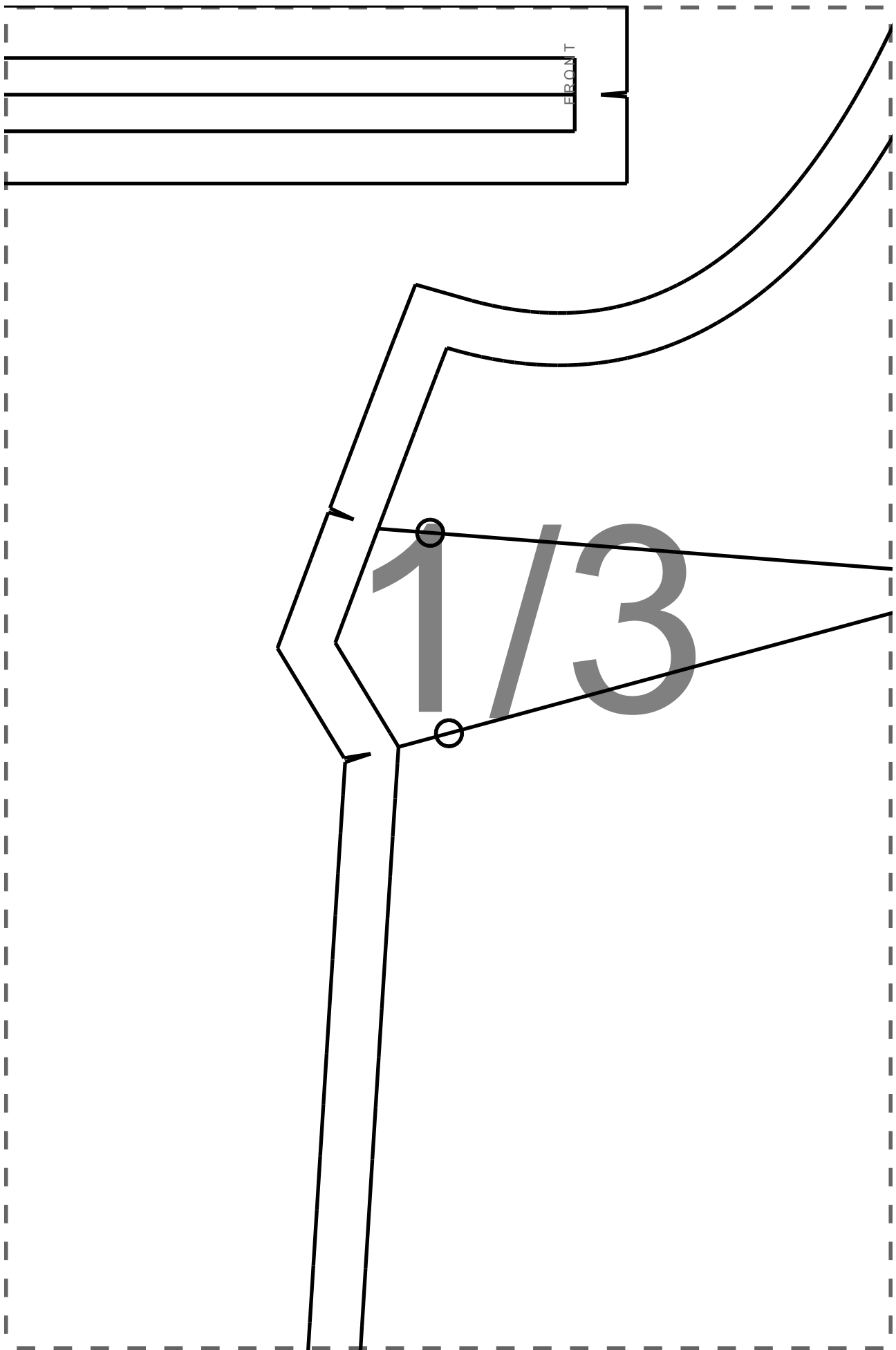
BACK

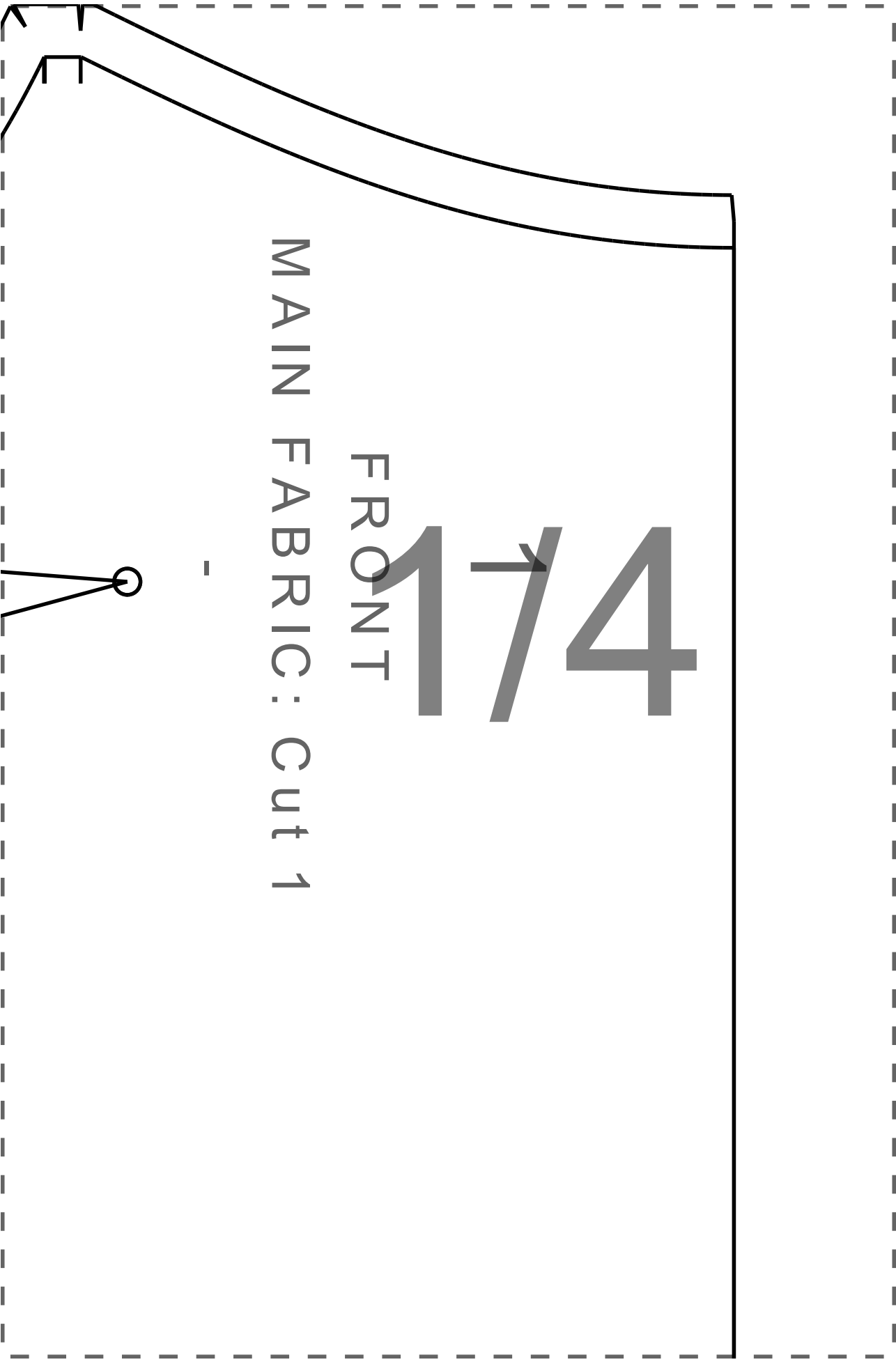
MAIN FABRIC: Cut 2

-



1 1/2





FRONT

MAIN FABRIC: Cut 1

1 1/4

2/1

2/2



2/3

2/4

ZIP

3/1

3/2



3/3

3/4

CUT ON FOLD

4/1



4/2



4/3

4/4

5/1



$5/2$



$5/3$

5/4