



Print this Calibration Test page first!

Size: Height: 170.00, Bust: 90.00, Waist: 68.50, Hips: 95.00
Pattern Name: -

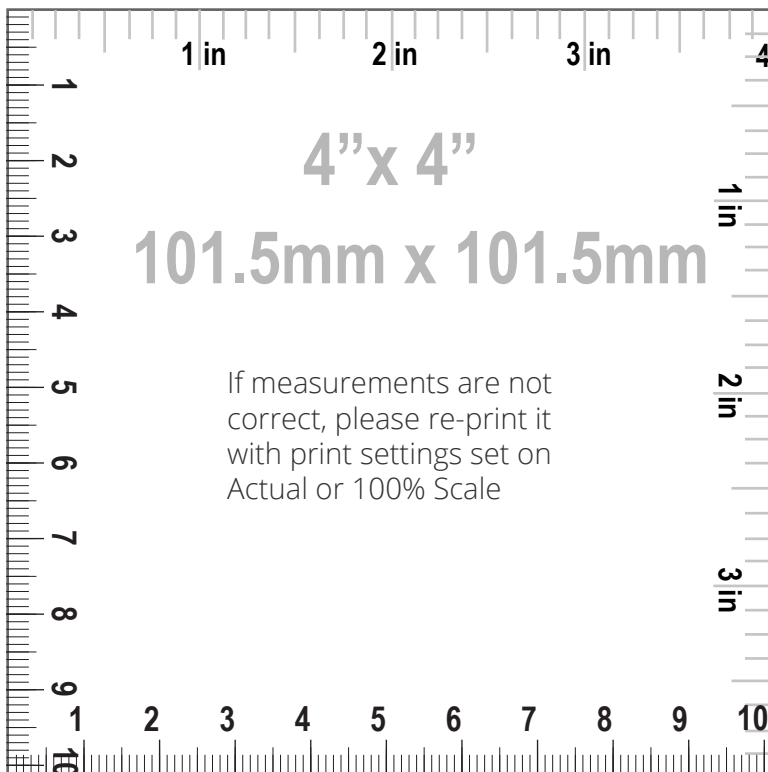
Notes

HOW TO PRINT



Printing

1. Once your Calibration Test Page has been printed, measure the 4"x 4" (10cm) scale box with a ruler. If the lengths match, you can confidently print your pattern. If the rulers do not match, set your print settings to 100% or Actual and retry.



Cutting

Your printouts will always have a dashed border to perfectly match your sheets. Cut off the right edge of each page. Be careful not to cut beyond the dashed mark, otherwise your patterns will not align accurately.



Taping

1. Group each sheet by the second number marked on each page i.e. in a group 1, there are: 1/1, 2/1, 3/1, 4/1, etc. In a group 2: 1/2, 2/2 etc.
2. Place page 1/1 on top of the page 2/1, overlapping the right side edge. Match corners and crosses and secure with a pin or tape. Then use a scotch tape to permanently attach the sheets together.



Pattern Name: -

Seam Allowance: 1.00 (0.39 in)

Pattern pieces:

1, WAISTBAND, MAIN FABRIC: Cut 1

2, PANTS, MAIN FABRIC: Cut 2

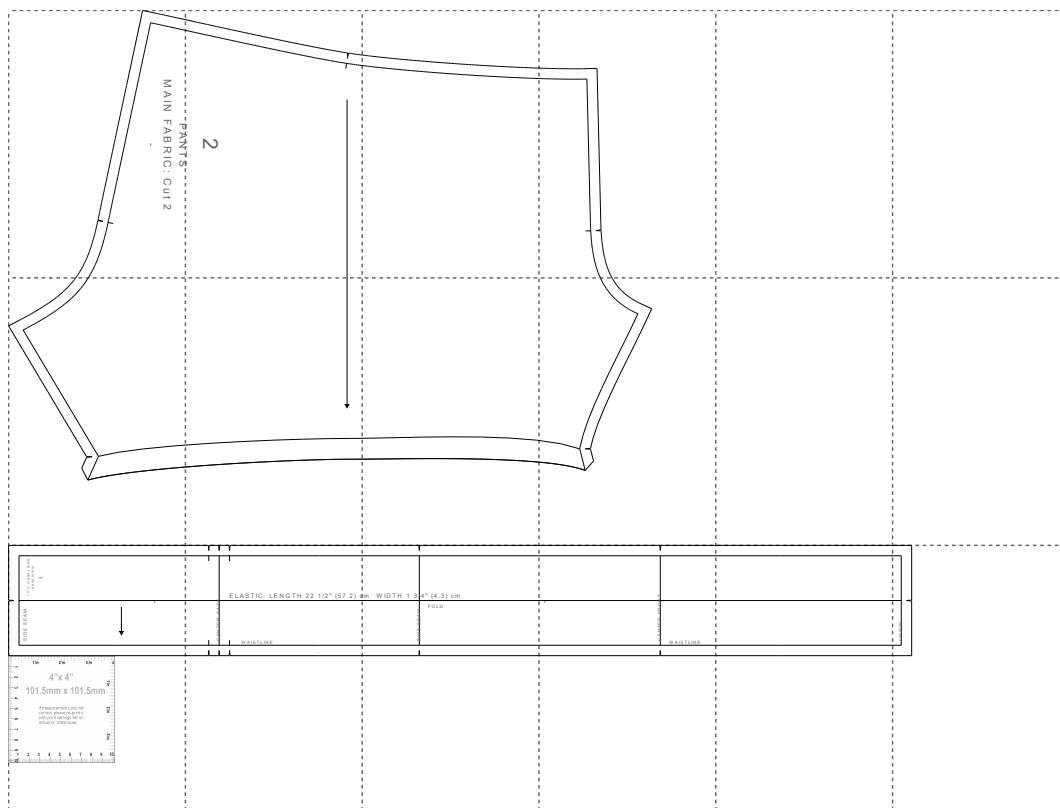
Pattern Specs (Circumferences are divided by 2):

- | | |
|------------------------------------|---|
| 1. Low hips 46.35 (18.25 in) | 7. Side length 36.03 (14.19 in) |
| 2. Thigh 60.03 (23.63 in) | 8. Waistband width 4.30 (1.69 in) |
| 3. Knee 37.49 (14.76 in) | 9. Waistband elastic width 4.30 (1.69 in) |
| 4. Bottom opening 46.23 (18.20 in) | 10. Waistband length 42.39 (16.69 in) |
| 5. Crotch height 81.20 (31.97 in) | 11. Waistband elastic length 57.20 (22.52 in) |
| 6. Inseam length 14.21 (5.59 in) | |



Paper Size: A4;

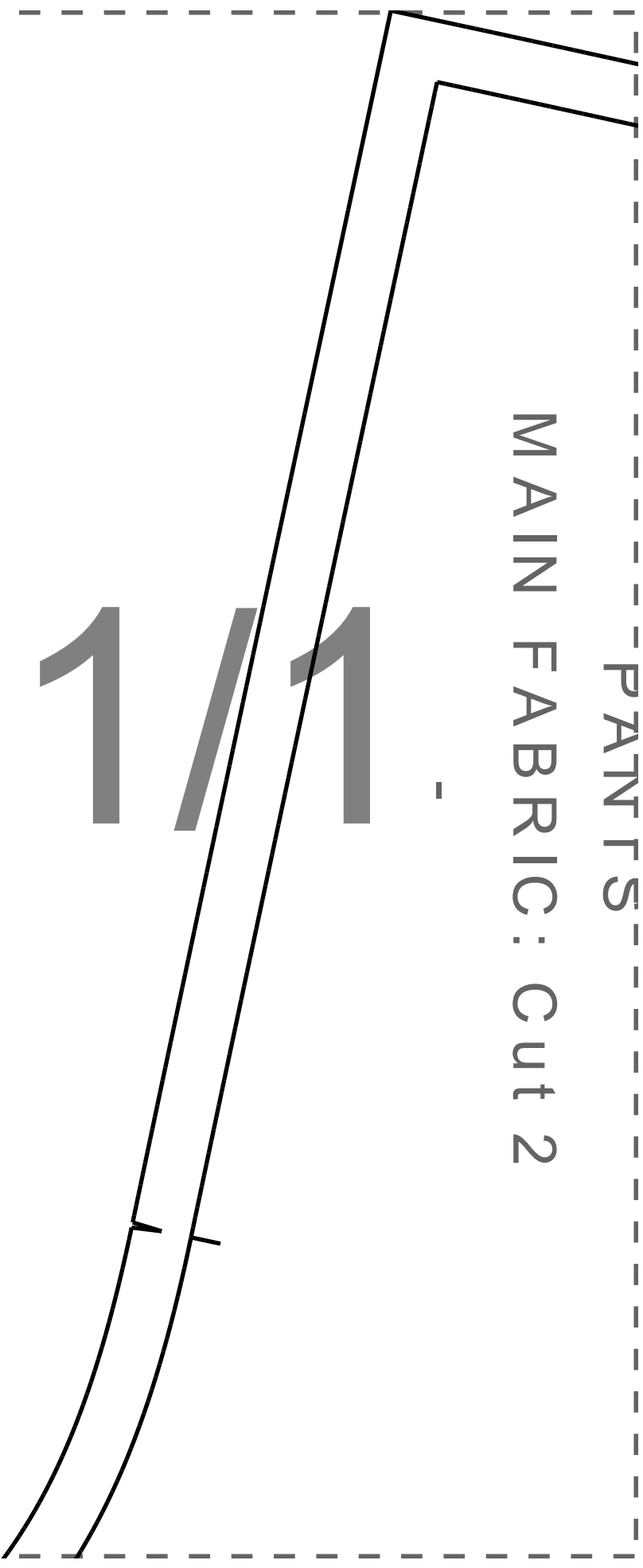
Print Actual Size (100% Scale);

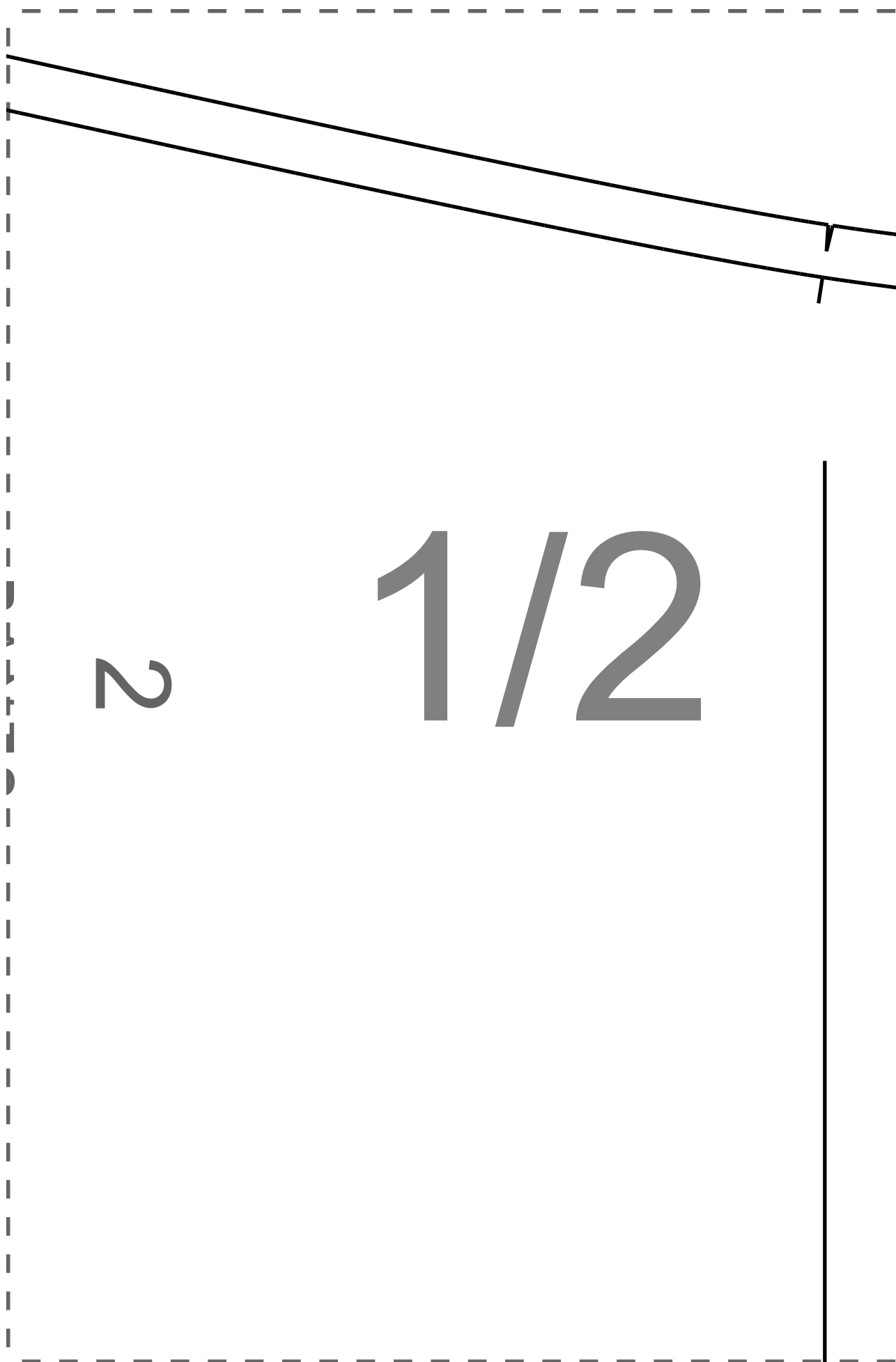


PANTS

MAIN FABRIC: Cut 2

1/1







1/3



1/4

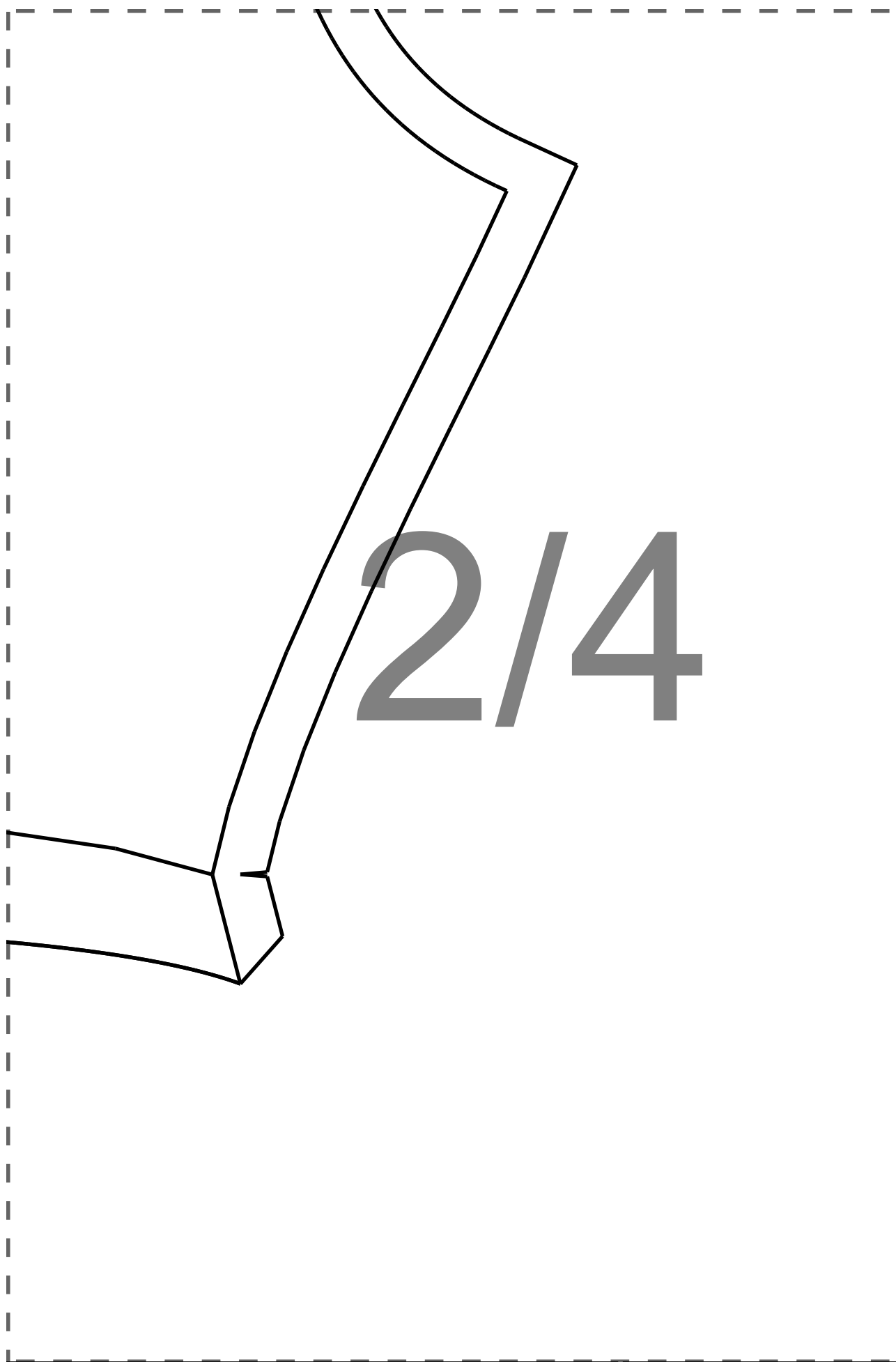


2/1

2/2



2/3



1
WAISTBAND
MAIN FABRIC: Cut 1

SIDE SEAM

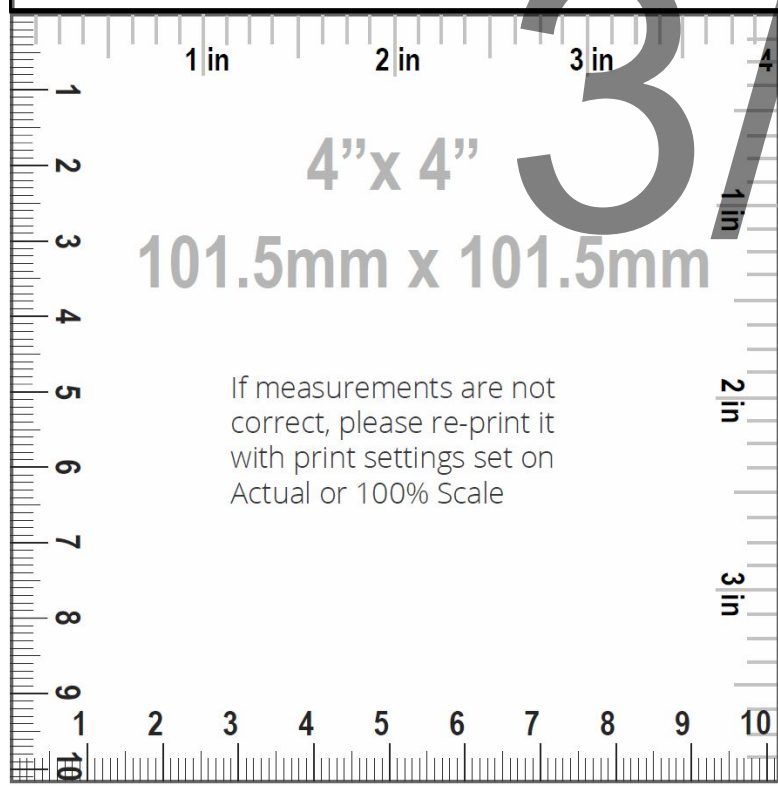


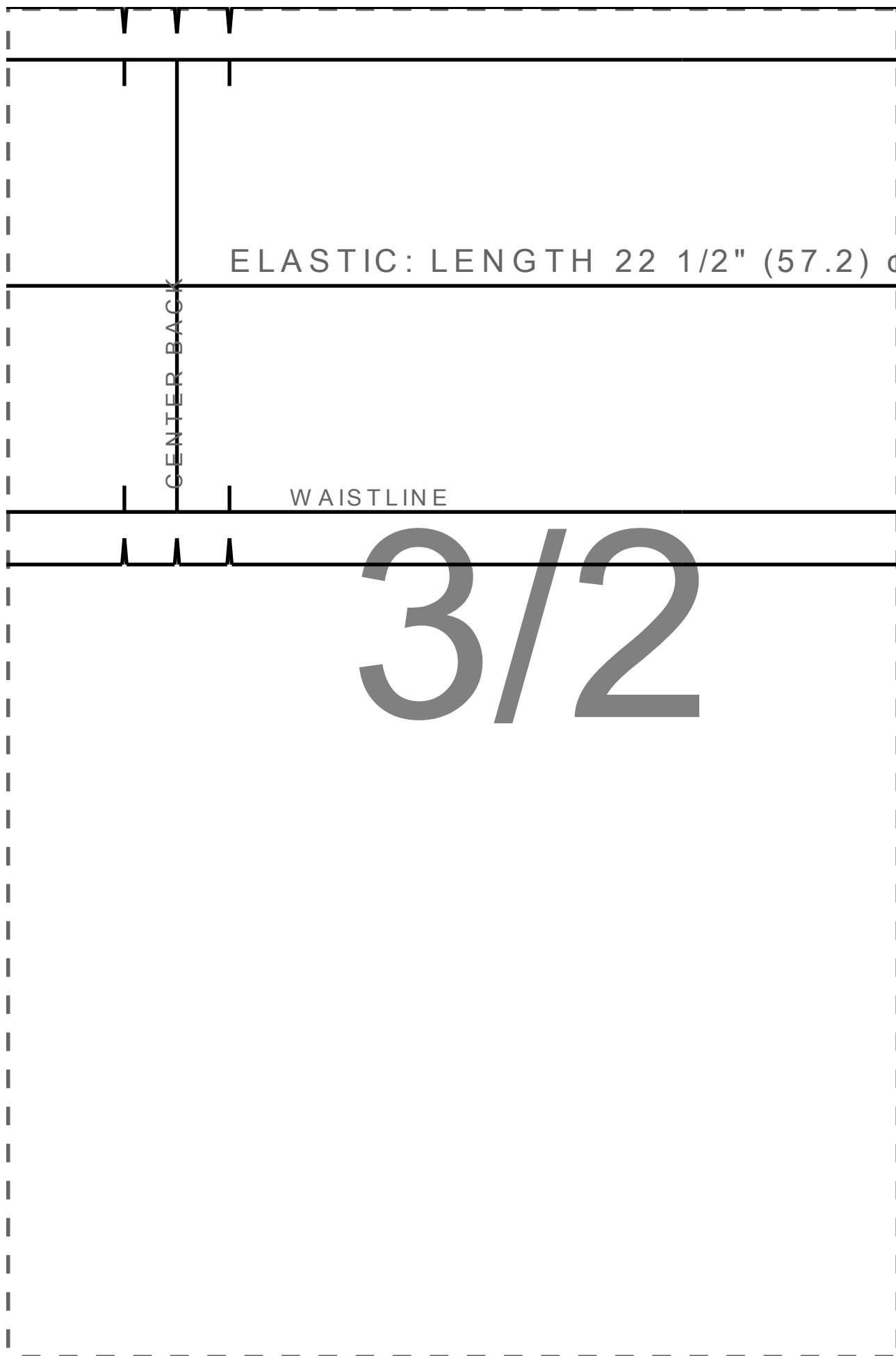
3/1

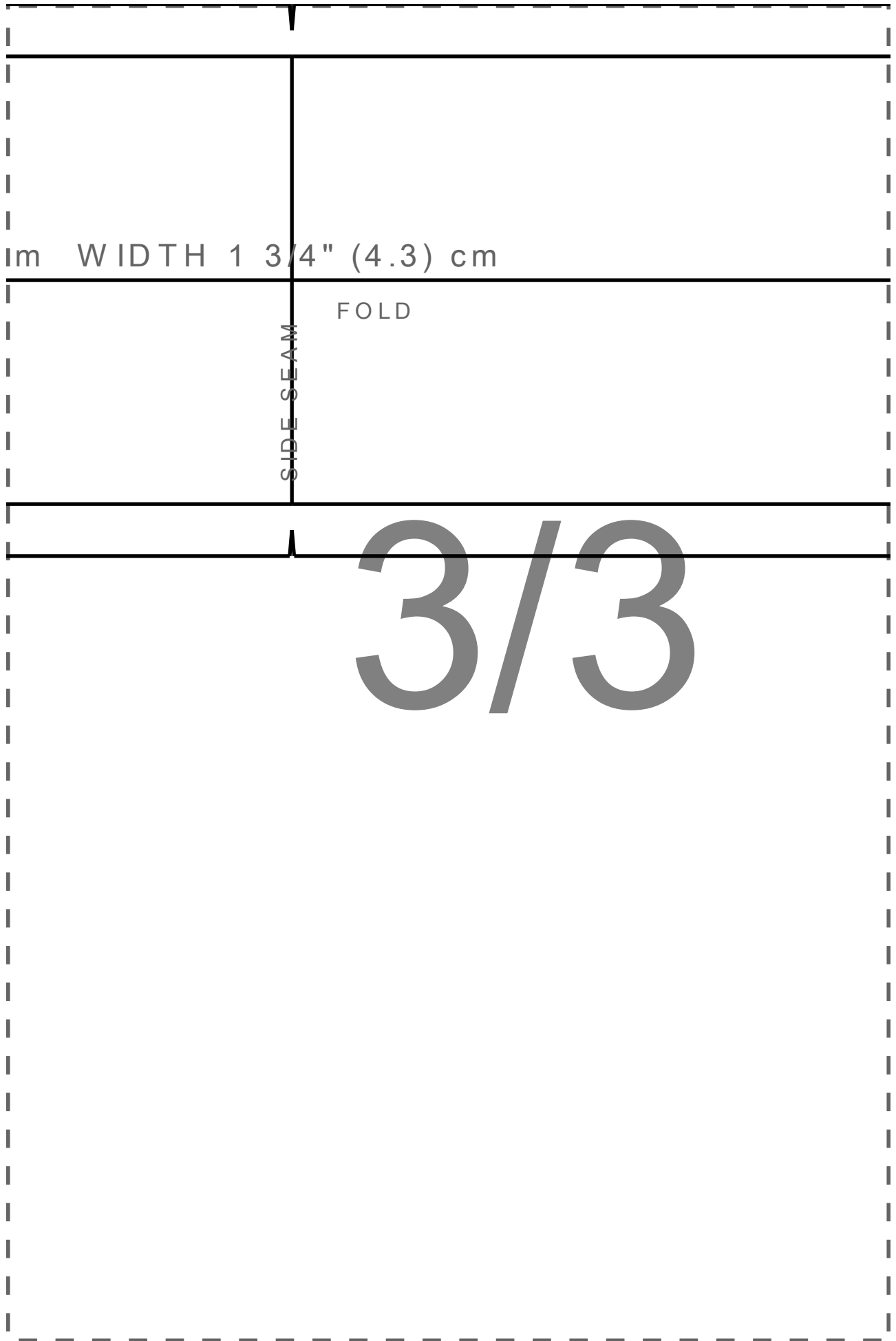
4"x 4"

101.5mm x 101.5mm

If measurements are not correct, please re-print it with print settings set on Actual or 100% Scale





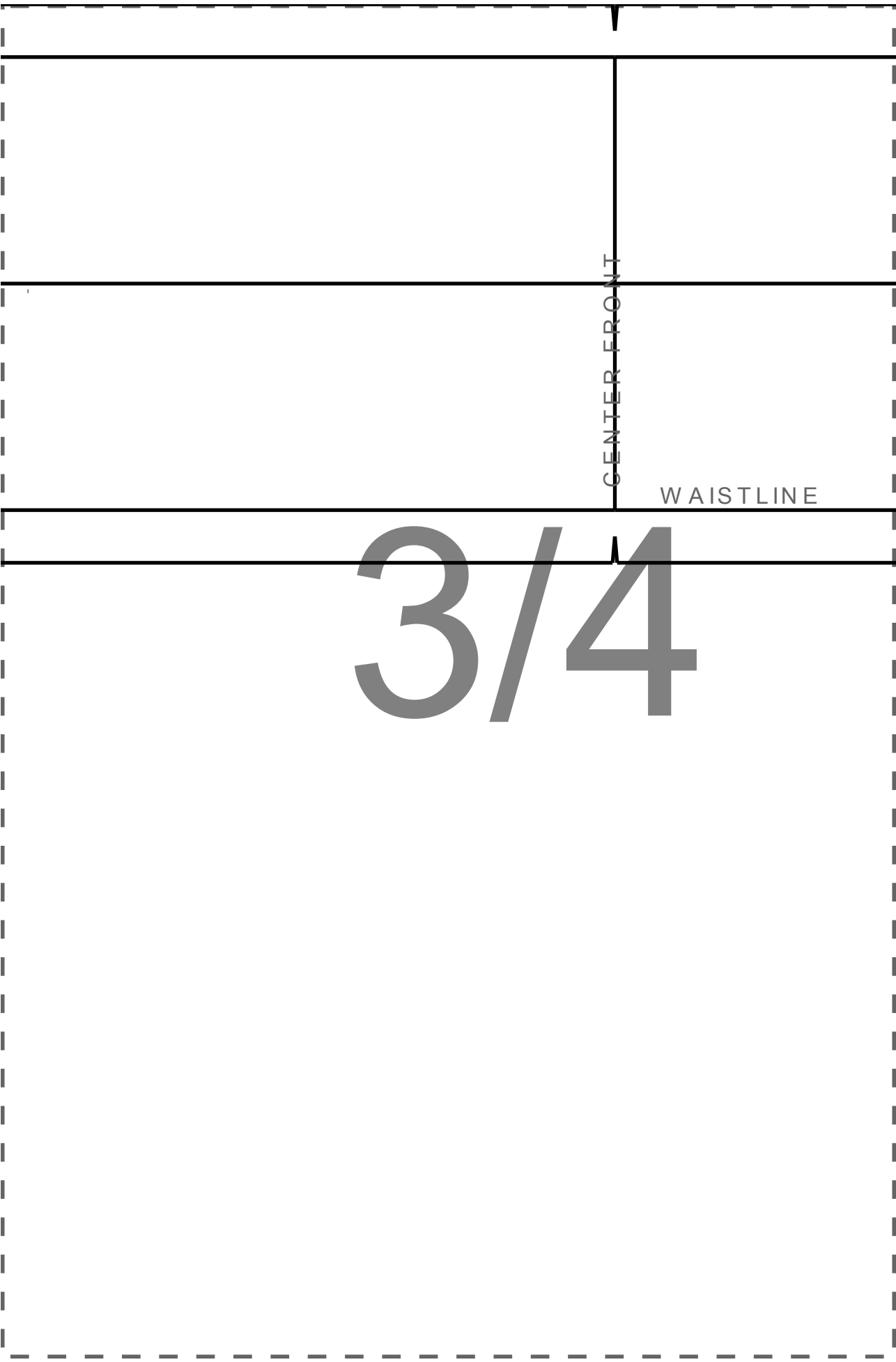


FOLD

SIDE SEAM

1m WIDTH 1 3/4\" (4.3) cm

3/3

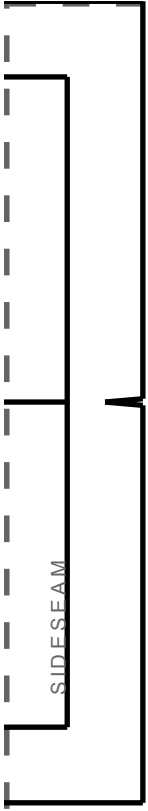


CENTER FRONT

WAISTLINE

3/4

3/5



3/6