



# Print this Calibration Test page first!

Size: Height: 170.00, Bust: 90.00, Waist: 68.50, Hips: 95.00  
Pattern Name: -

## Notes

---

---

---

---

---

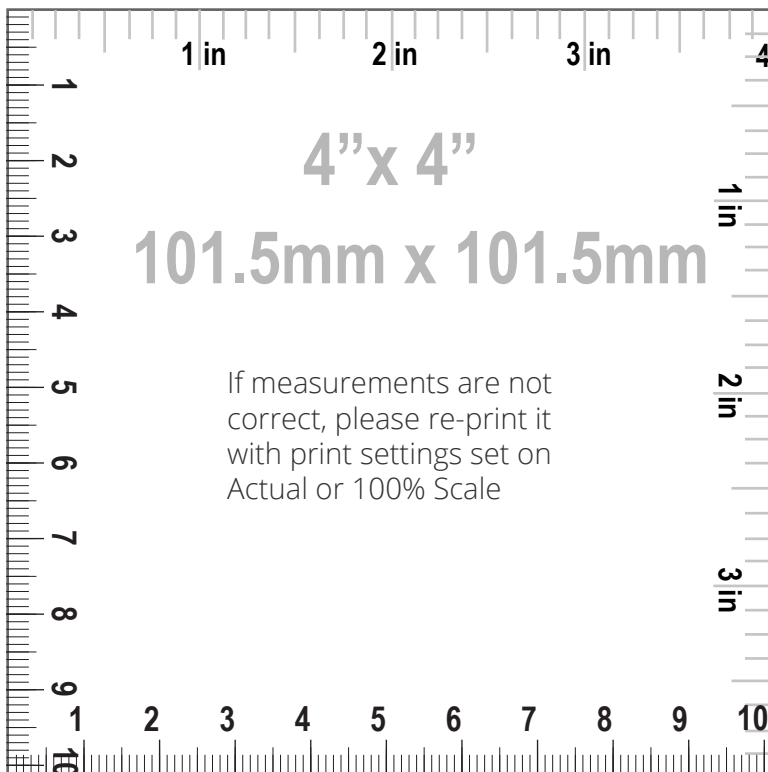
---

## HOW TO PRINT



### Printing

1. Once your Calibration Test Page has been printed, measure the 4"x 4" (10cm) scale box with a ruler. If the lengths match, you can confidently print your pattern. If the rulers do not match, set your print settings to 100% or Actual and retry.



### Cutting

Your printouts will always have a dashed border to perfectly match your sheets. Cut off the right edge of each page. Be careful not to cut beyond the dashed mark, otherwise your patterns will not align accurately.



### Taping

1. Group each sheet by the second number marked on each page i.e. in a group 1, there are: 1/1, 2/1, 3/1, 4/1, etc. In a group 2: 1/2, 2/2 etc.  
2. Place page 1/1 on top of the page 2/1, overlapping the right side edge. Match corners and crosses and secure with a pin or tape. Then use a scotch tape to permanently attach the sheets together.



Pattern Name: -

Seam Allowance: 1.00 (0.39 in)

Pattern pieces:

- |   |   |
|---|---|
| 1, SKIRT FRONT LINING, LINING: Cut 1      | 5, SKIRT CENTER BACK, MAIN FABRIC: Cut 1  |
| 2, SKIRT CENTER FRONT, MAIN FABRIC: Cut 1 | 6, SKIRT SIDE BACK, MAIN FABRIC: Cut 2    |
| 3, SKIRT SIDE FRONT, MAIN FABRIC: Cut 2   | 7, WAISTBAND, MAIN FABRIC: Cut 1, FUSIBLE |
| 4, SKIRT BACK LINING, LINING: Cut 1       | INTERFACING: Cut 1                        |

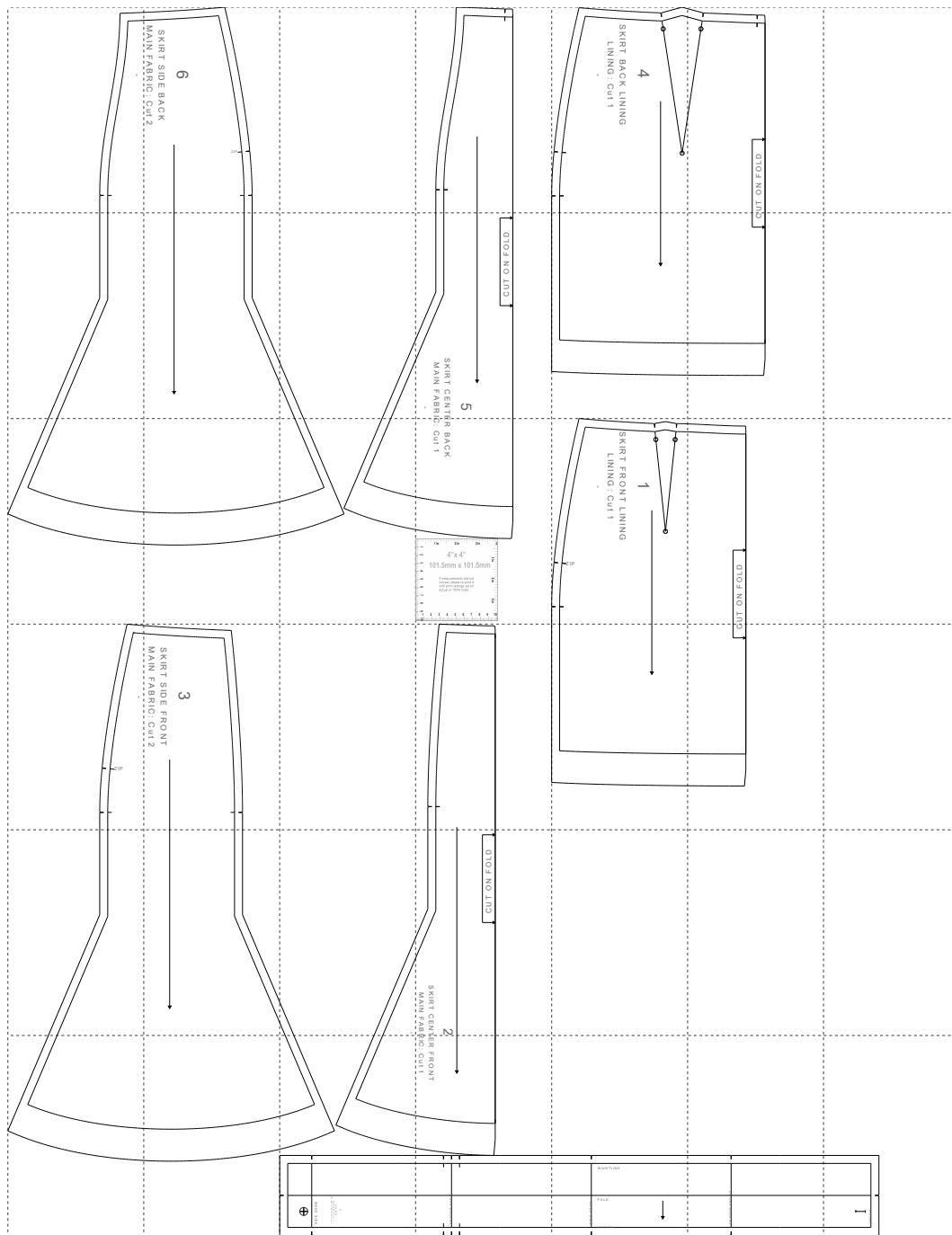
Pattern Specs (Circumferences are divided by 2):

- |   |   |
|---|---|
| 1. Side invisible zipper length 18.00 (7.09 in)           | 7. Waist 34.94 (13.76 in)                     |
| 2. Center front length from waist to hem 61.18 (24.09 in) | 8. Waistband width 4.00 (1.57 in)             |
| 3. Center back length from waist to hem 61.18 (24.09 in)  | 9. Waistband length 72.88 (28.69 in)          |
| 4. Skirt side seam 61.27 (24.12 in)                       | 10. Waistband button diameter 1.00 (0.39 in)  |
| 5. Low hips 48.94 (19.27 in)                              | 11. Waistband buttons quantity 1.00 (0.39 in) |
| 6. Hemline sweep 111.20 (43.78 in)                        |   |



Paper Size: A4;

Print Actual Size (100% Scale);



1 / 1

1

1/2

6

SKIRT SIDE BACK

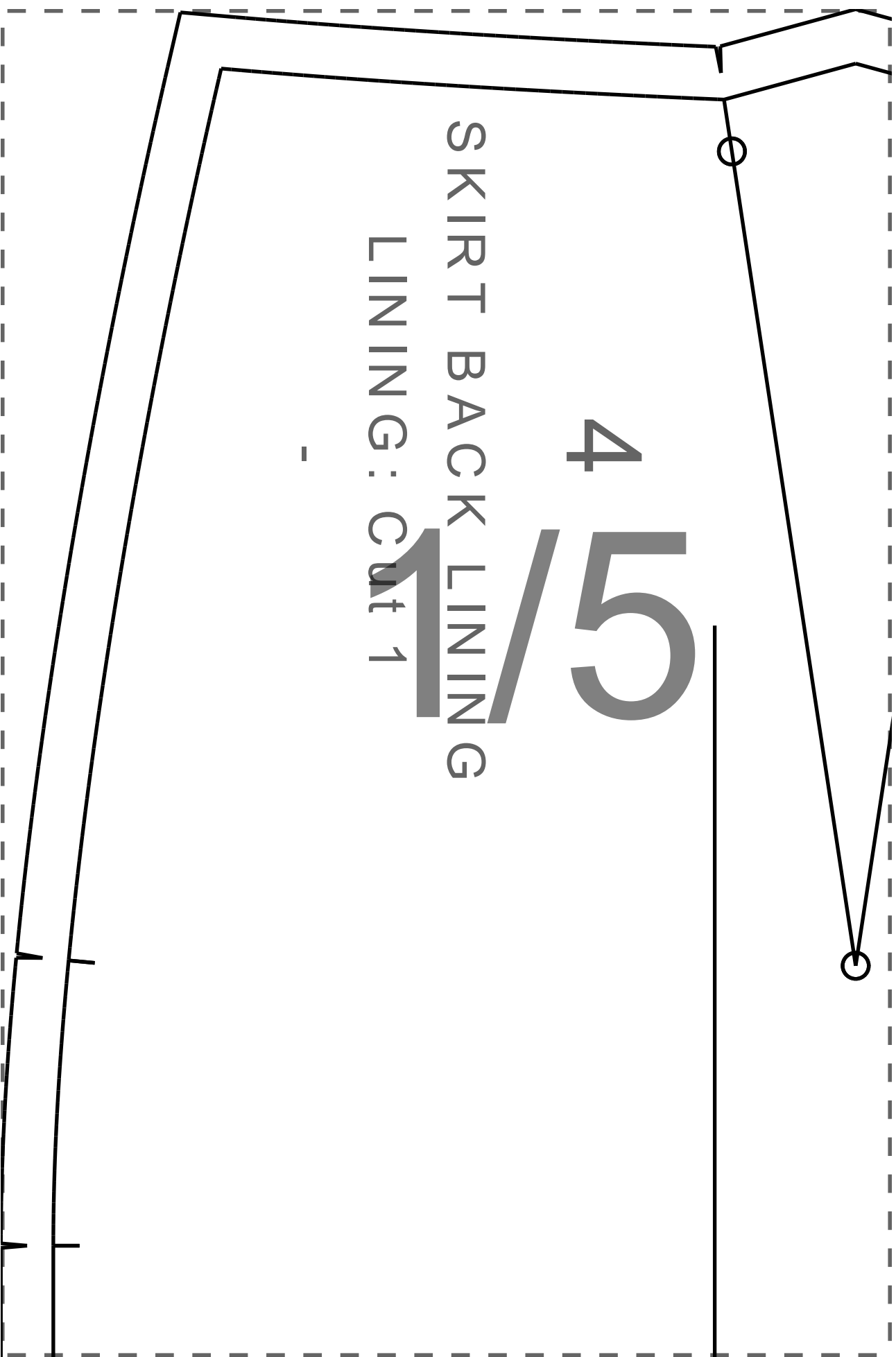
MAIN FABRIC: Cut 2

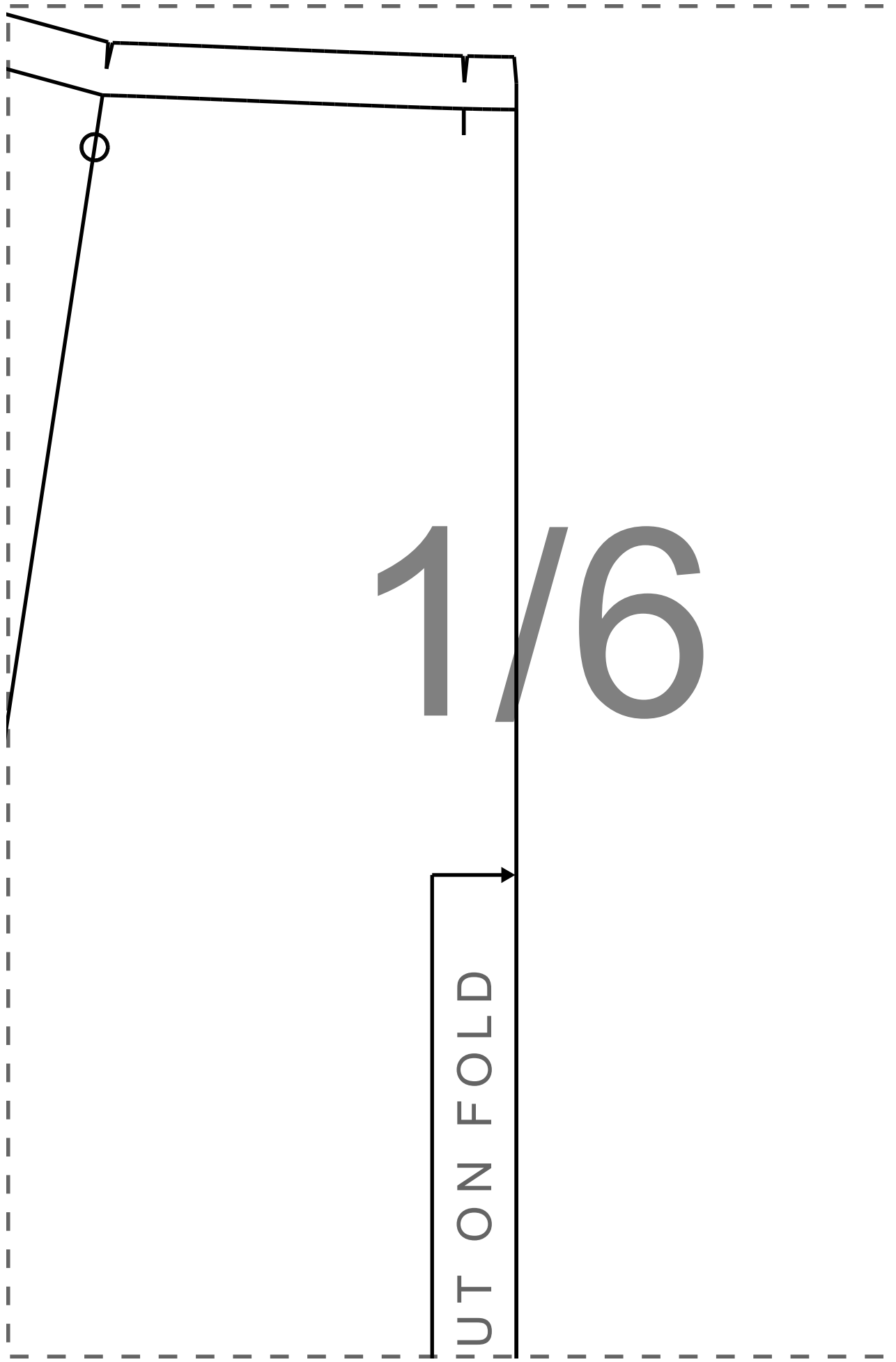
ZIP



1/4

This technical drawing shows a 1/4 section of a mechanical part. The part is defined by a solid black line. It features a vertical base on the right, a vertical edge on the left, and a top edge that is slightly curved. A dashed line indicates the full profile of the part, which is symmetrical about a vertical centerline. The centerline is marked with a vertical line and a small circle at the top. The text '1/4' is centered in the drawing, indicating that the part is a quarter section.





1/6

UT ON FOLD



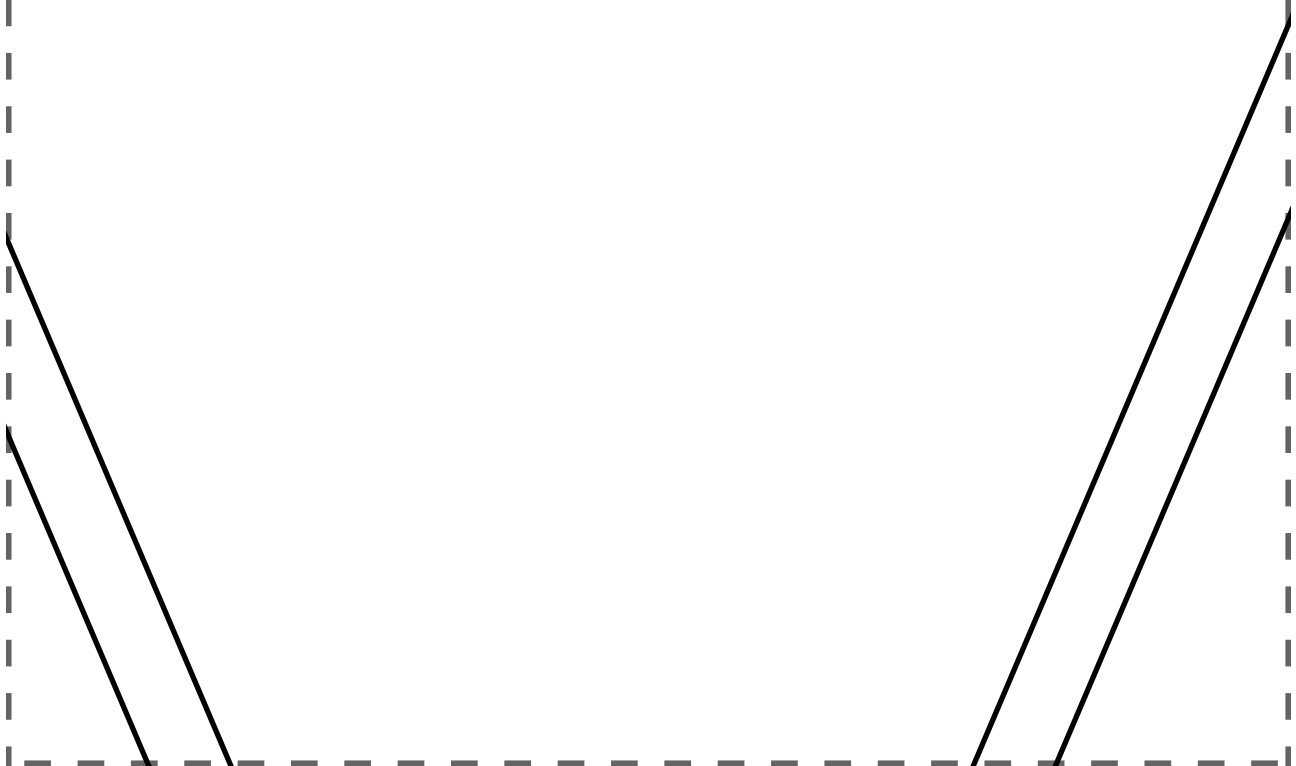
2/1



2/2



2/3



CUT ON FOLD

2/4

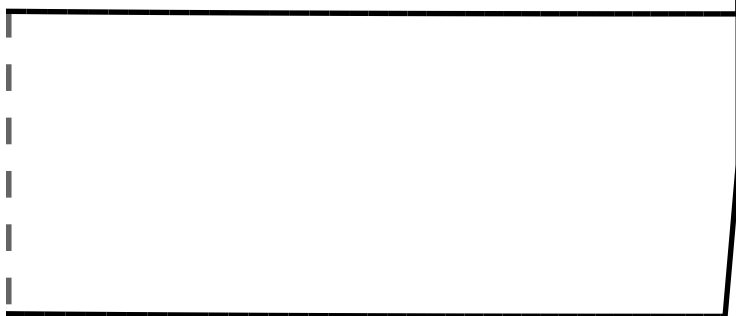
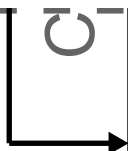
5

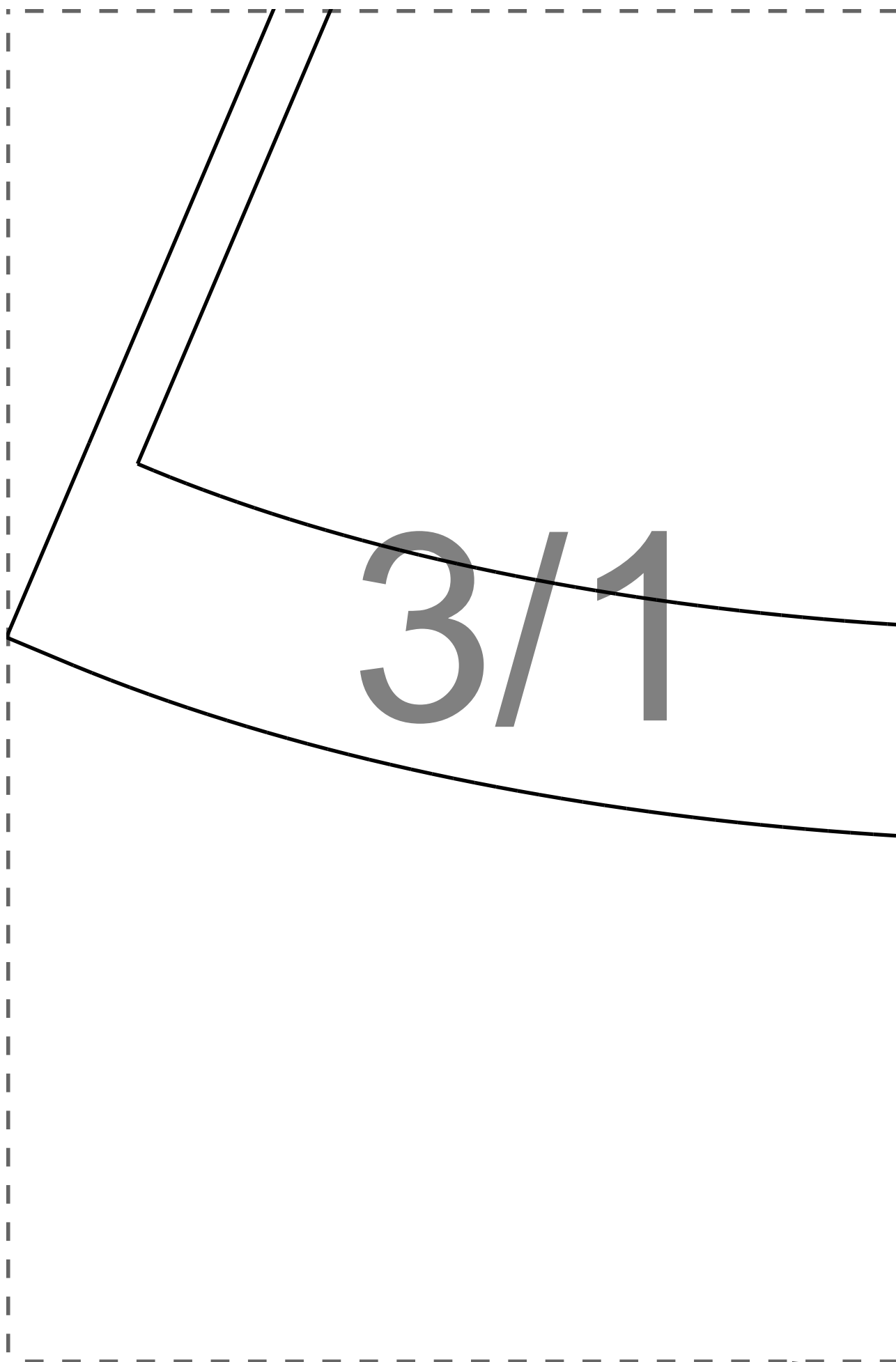
SKIRT CENTRE  
MAIN FABRIC

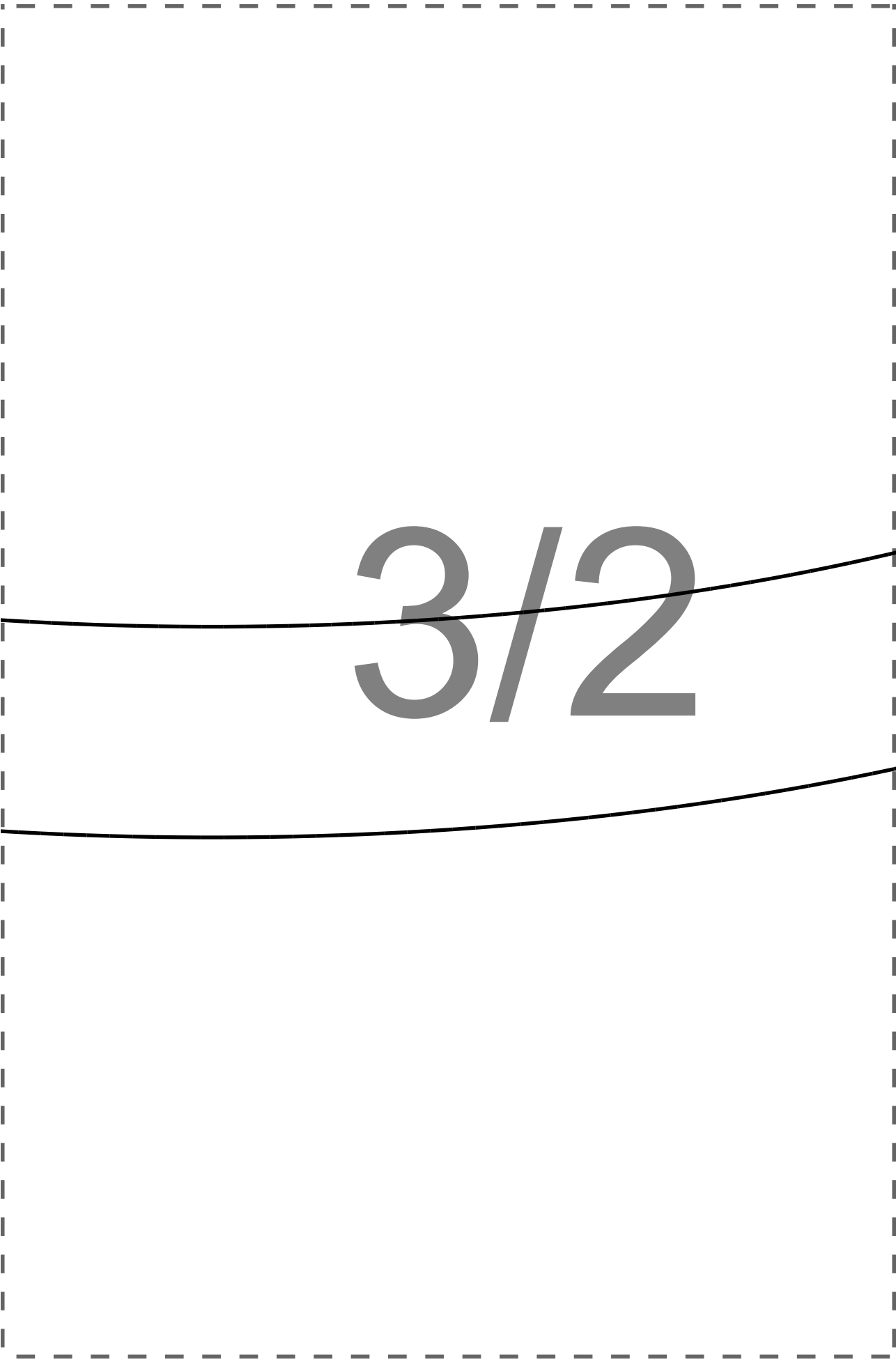


$\frac{2}{5}$

2/6

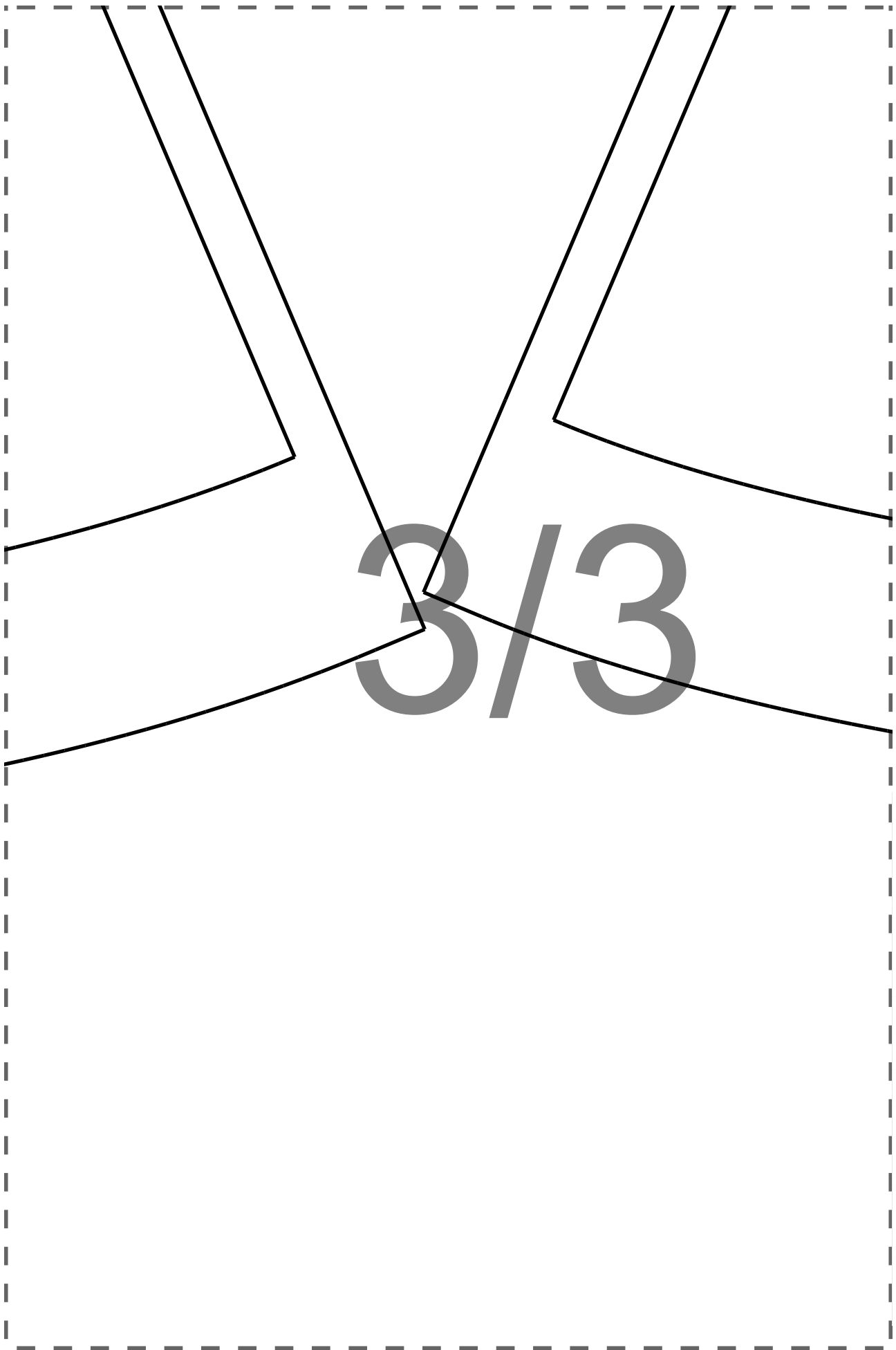






$3/2$

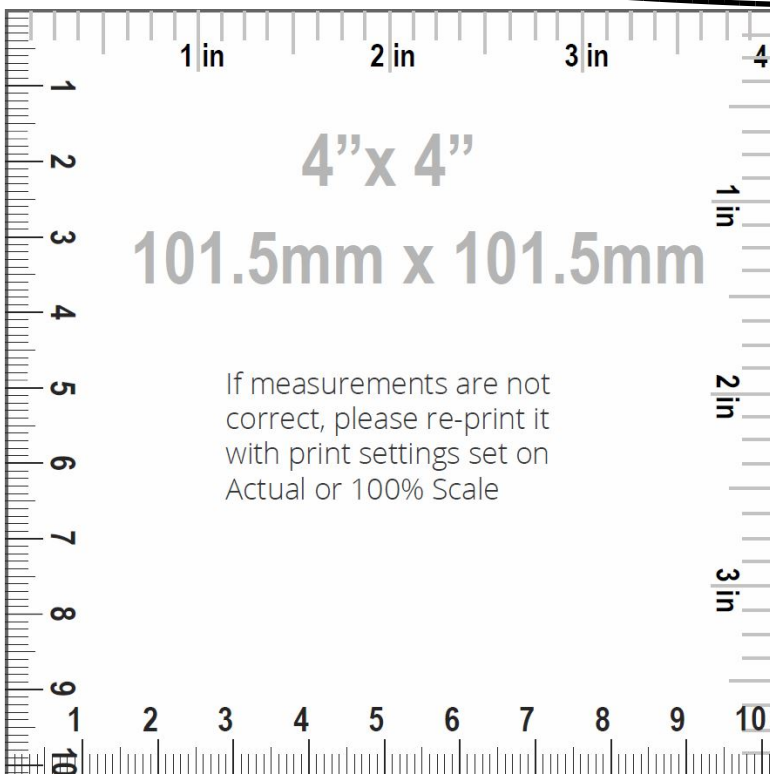




3/4

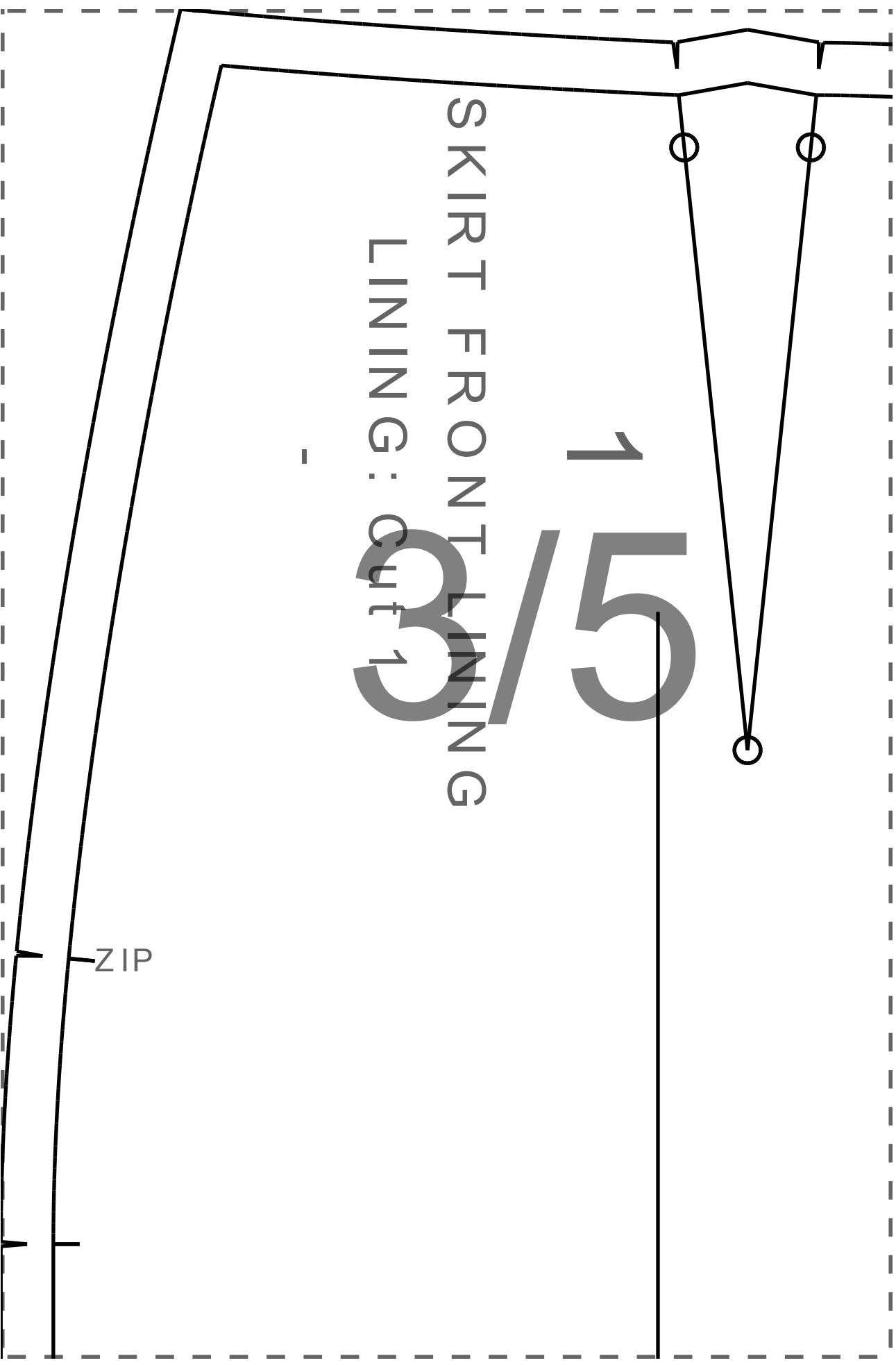
FR BACK

C: Cut 1



# 3/5

SKIRT FRONT LINING  
LINING: cut 1



3/6

UT ON FOLD



4/1

ZIP

4/2

3

SKIRT SIDE FRONT  
MAIN FABRIC: Cut 2

4/4

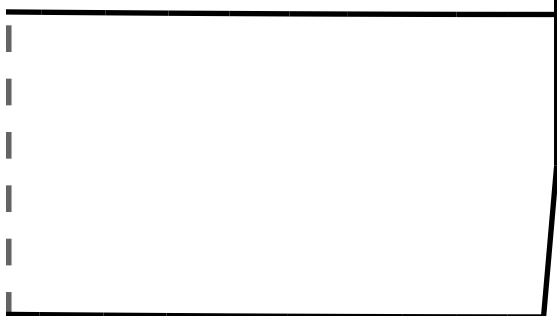


$\frac{4}{5}$





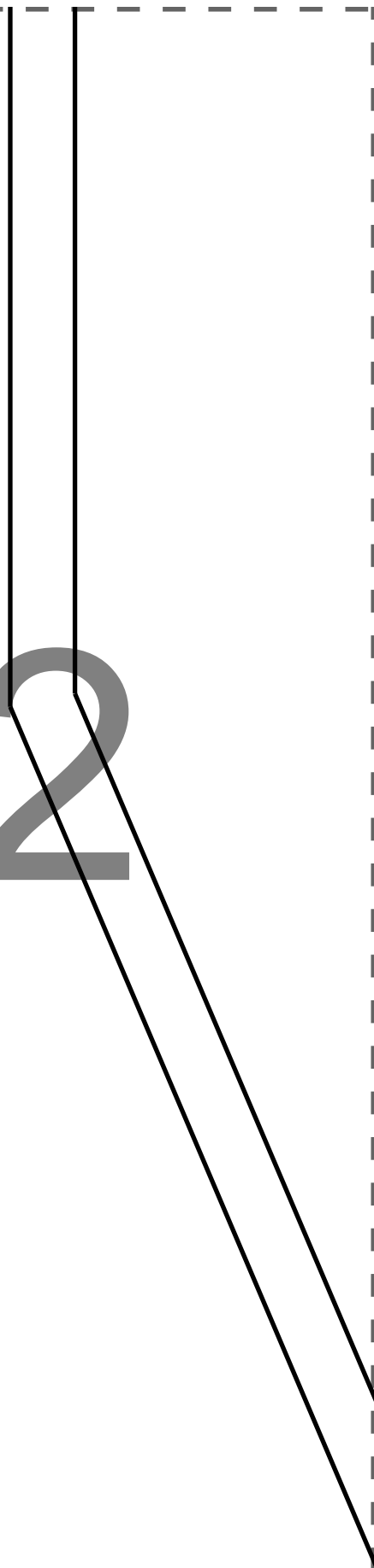
4/6



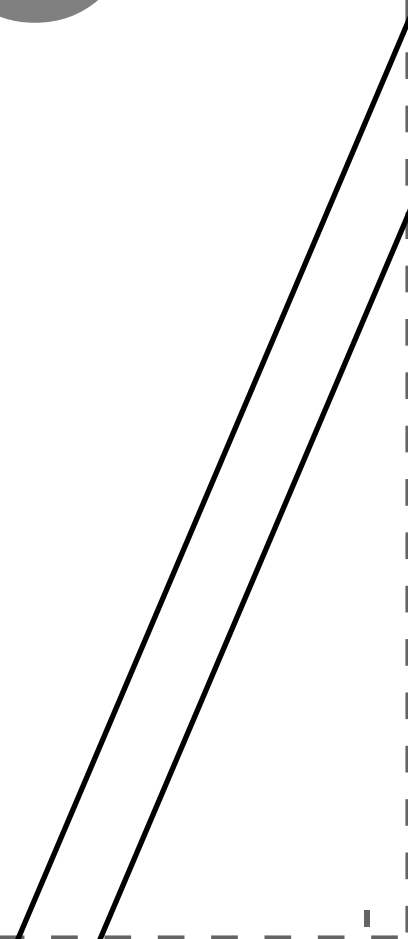
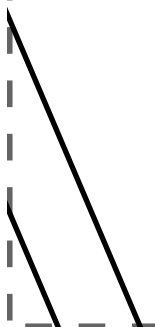
5/1



5/2



5/3

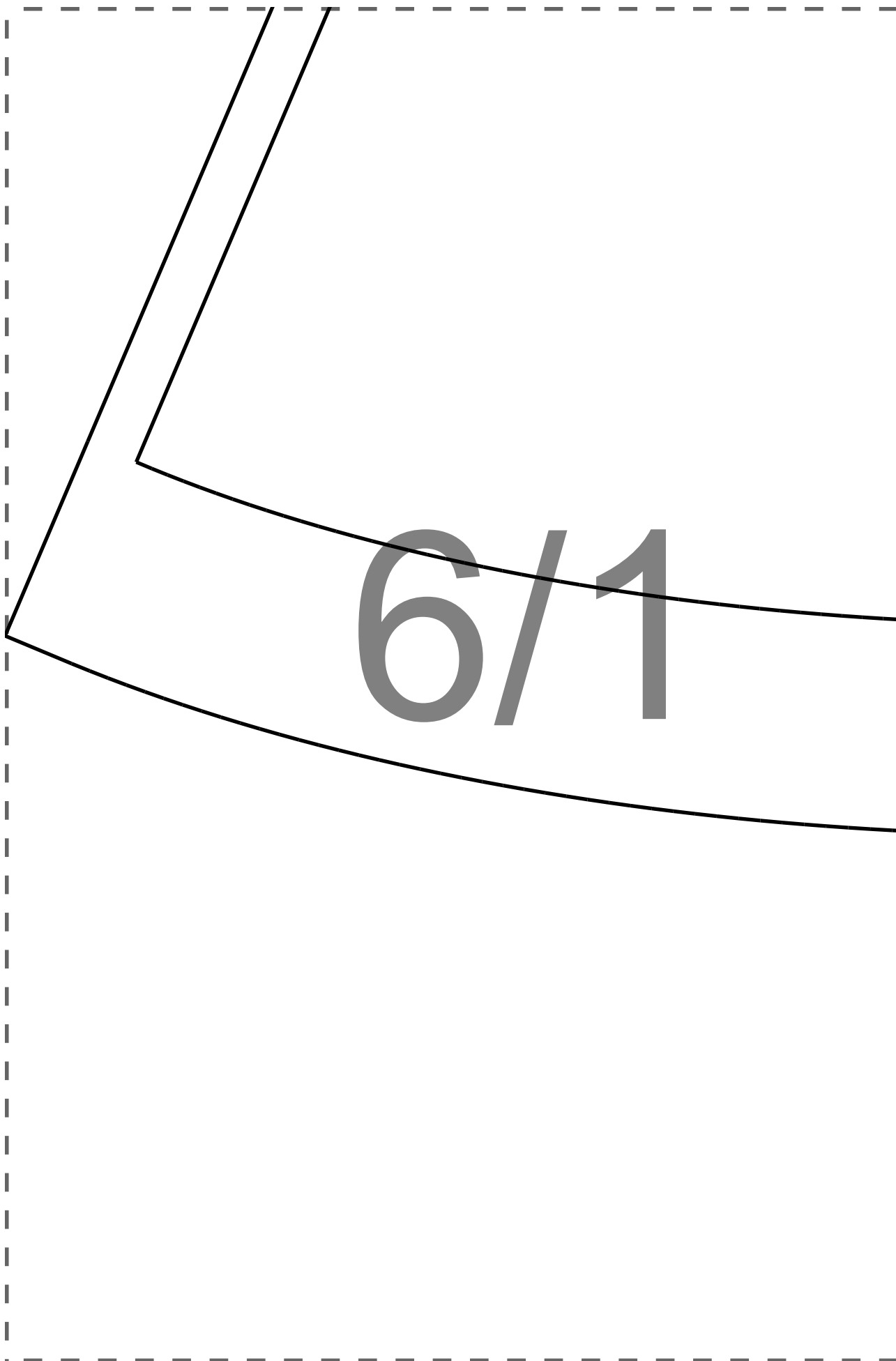


5/4

CUT ON FOLD

2

SKIRT CENT  
MAIN FAB



6/2

6/3

7

WAISTBAND  
MAIN FABRIC : cut 1  
FUSIBLE INTERFACING : cut 1

SIDE SEAM





6/4

FRONT

RIC: Cut 1



CENTER BACK

6/5

WAISTLINE

FOLD

SIDE SEAM

WAISTLINE



6/6

CENTER FRONT

6/7

