



# Print this Calibration Test page first!

Size: Height: 170.00, Bust: 90.00, Waist: 68.50, Hips: 95.00  
Pattern Name: -

## Notes

---

---

---

---

---

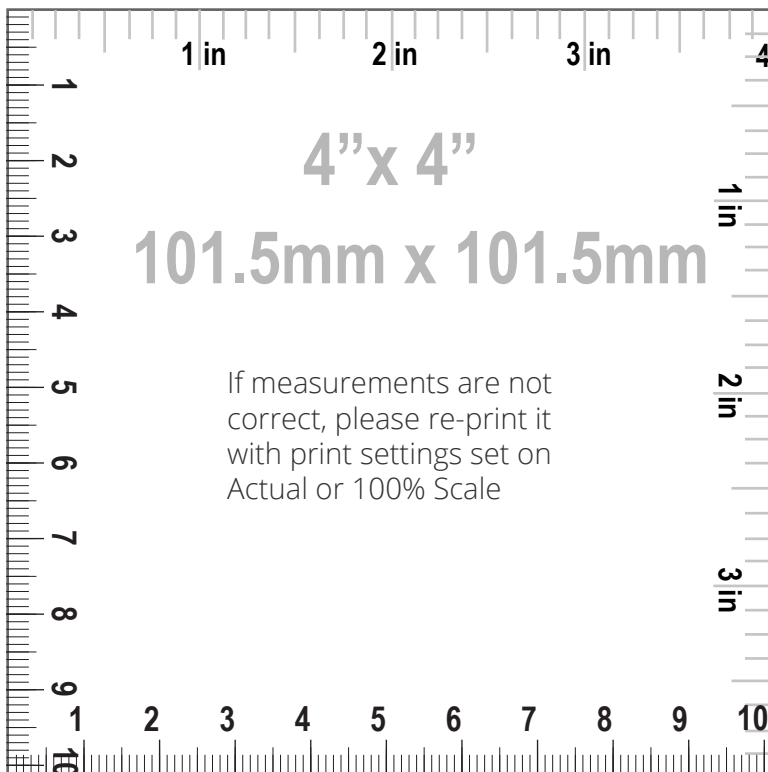
---

## HOW TO PRINT



### Printing

1. Once your Calibration Test Page has been printed, measure the 4"x 4" (10cm) scale box with a ruler. If the lengths match, you can confidently print your pattern. If the rulers do not match, set your print settings to 100% or Actual and retry.



### Cutting

Your printouts will always have a dashed border to perfectly match your sheets. Cut off the right edge of each page. Be careful not to cut beyond the dashed mark, otherwise your patterns will not align accurately.



### Taping

1. Group each sheet by the second number marked on each page i.e. in a group 1, there are: 1/1, 2/1, 3/1, 4/1, etc. In a group 2: 1/2, 2/2 etc.  
2. Place page 1/1 on top of the page 2/1, overlapping the right side edge. Match corners and crosses and secure with a pin or tape. Then use a scotch tape to permanently attach the sheets together.



Pattern Name: -

Seam Allowance: 1.00 (0.39 in)

Pattern pieces:

- 1, PANTS FRONT, MAIN FABRIC: Cut 2
- 2, PANTS BACK, MAIN FABRIC: Cut 2
- 3, CUFF, MAIN FABRIC: Cut 2

- 4, WAISTBAND, MAIN FABRIC: Cut 1
- 5, POCKET BAG, LINING: Cut 4

Pattern Specs (Circumferences are divided by 2):

- |   |   |
|---|---|
| 1. Pocket entry length 11.62 (4.57 in)      | 11. Crotch height 26.53 (10.44 in)            |
| 2. Waistline pocket position 6.10 (2.40 in) | 12. Inseam length 51.88 (20.43 in)            |
| 3. Cuff elastic length 31.48 (12.39 in)     | 13. Pants side seam length 79.36 (31.24 in)   |
| 4. Cuff elastic width 2.00 (0.79 in)        | 14. Pocket bag height 22.15 (8.72 in)         |
| 5. Low hips 48.15 (18.96 in)                | 15. Waistband width 4.30 (1.69 in)            |
| 6. Thigh 31.17 (12.27 in)                   | 16. Waistband elastic width 4.30 (1.69 in)    |
| 7. Knee 24.42 (9.61 in)                     | 17. Waistband length 46.12 (18.16 in)         |
| 8. Bottom opening 22.49 (8.85 in)           | 18. Waistband elastic length 57.20 (22.52 in) |
| 9. Front rise 27.65 (10.89 in)              |   |
| 10. Back rise 37.25 (14.67 in)              |   |

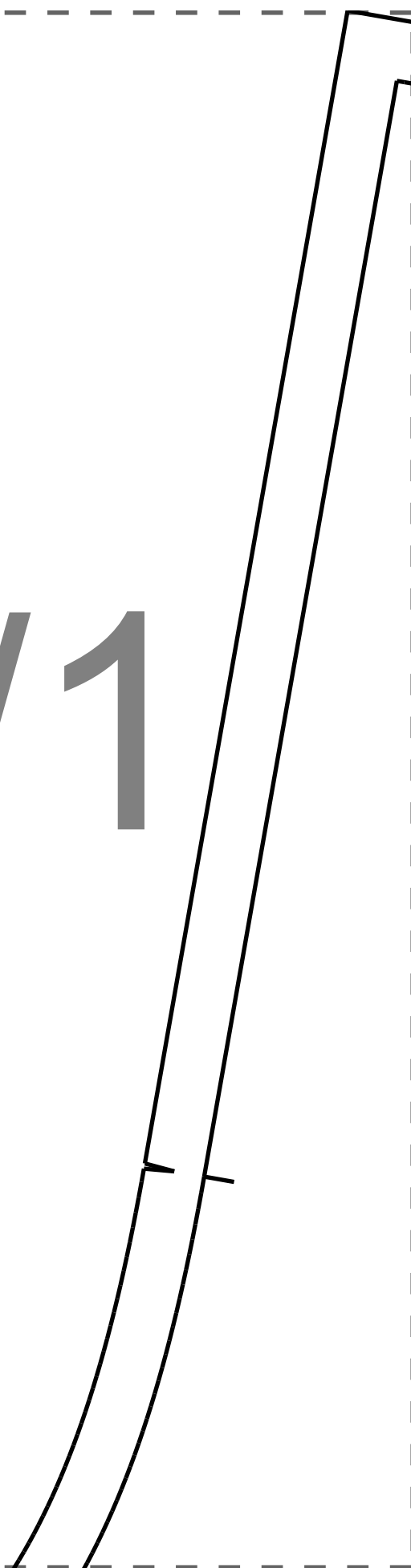


Paper Size: A4;

Print Actual Size (100% Scale);



1 / 1



1/2  
2

PANTS BACK

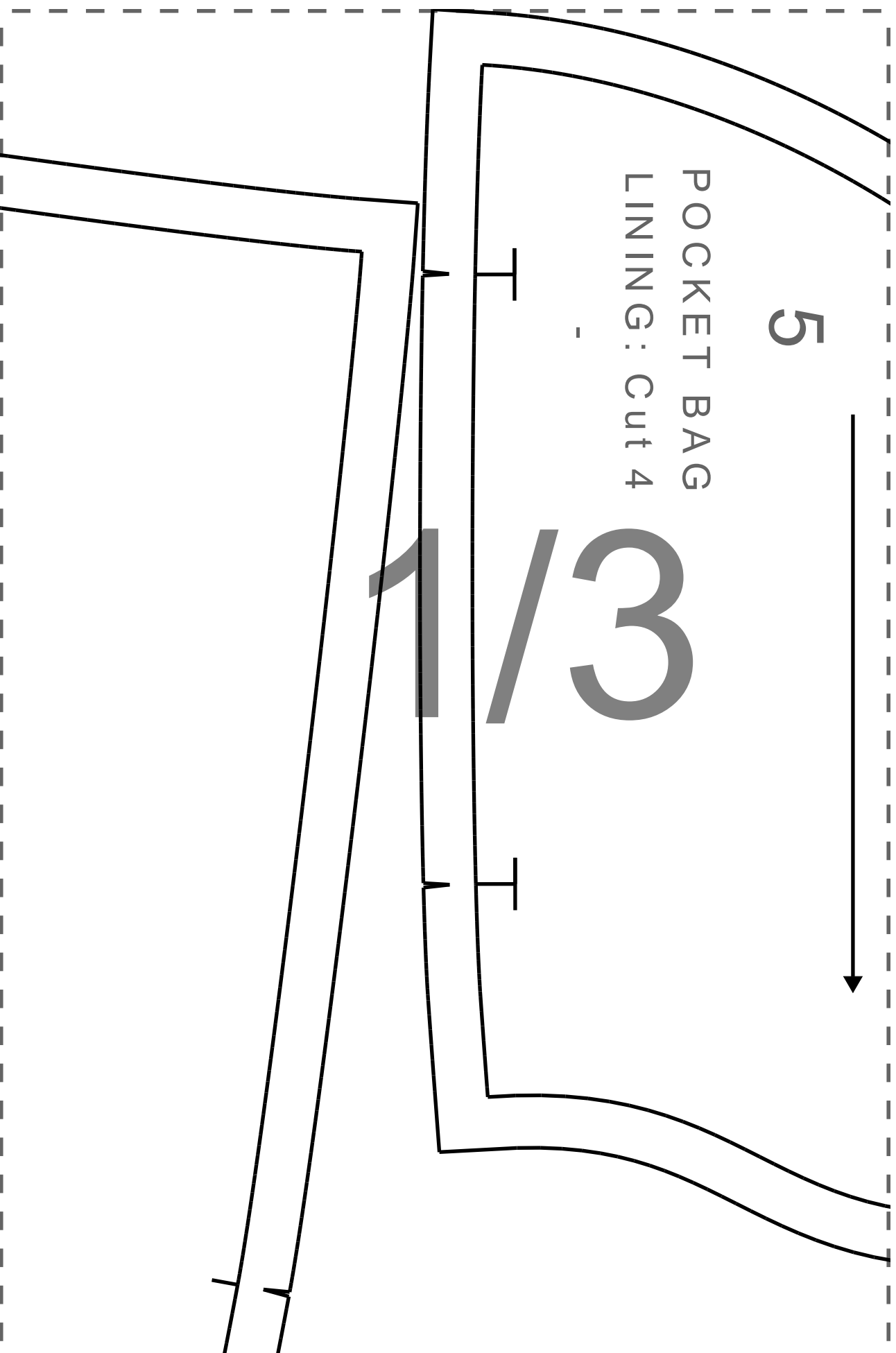
MAIN FABRIC: Cut 2

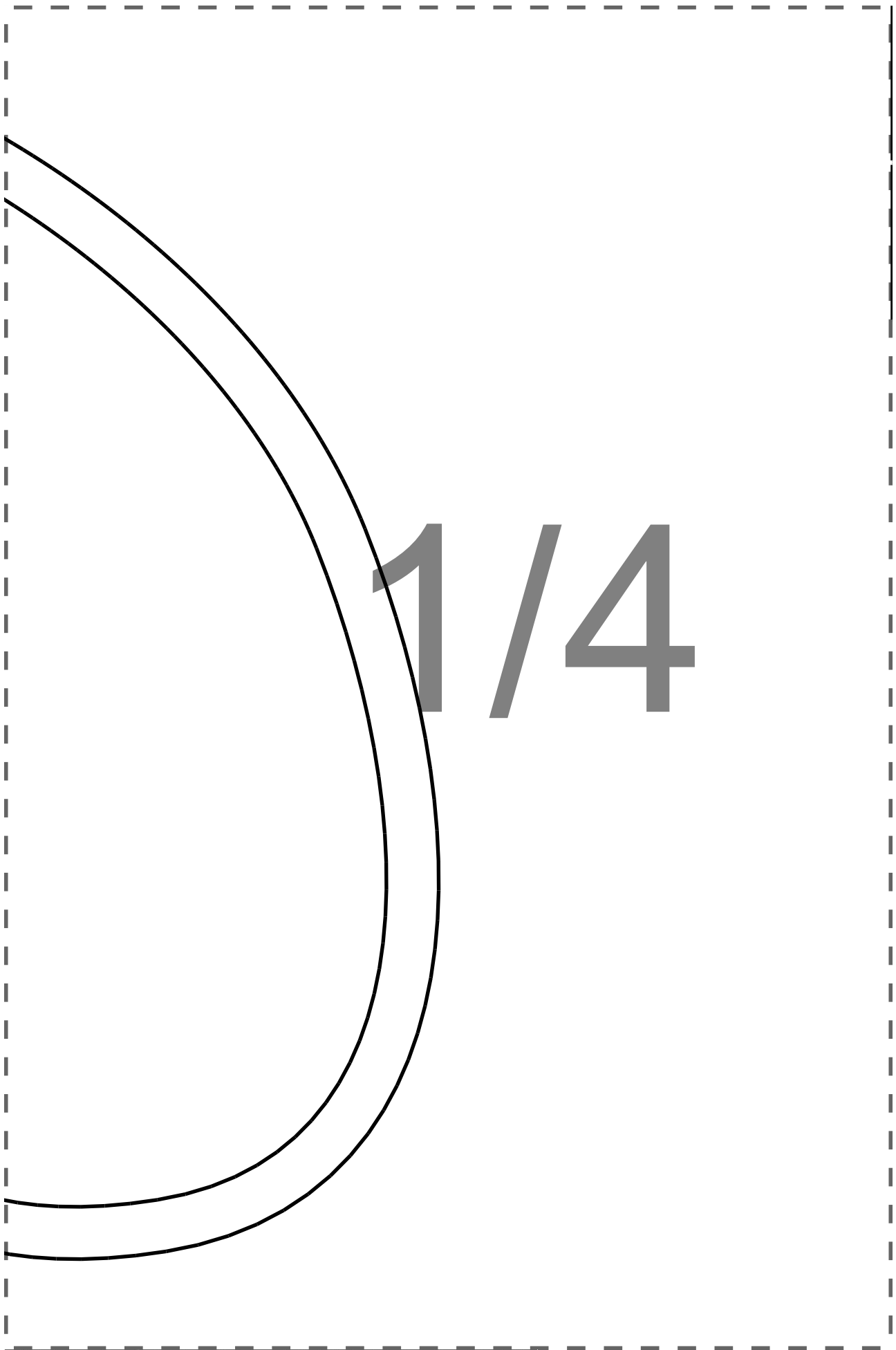


5

POCKET BAG  
LINING: Cut 4

1 1/3





3  
CUFF  
MAIN FABRIC: CUI 2

EL

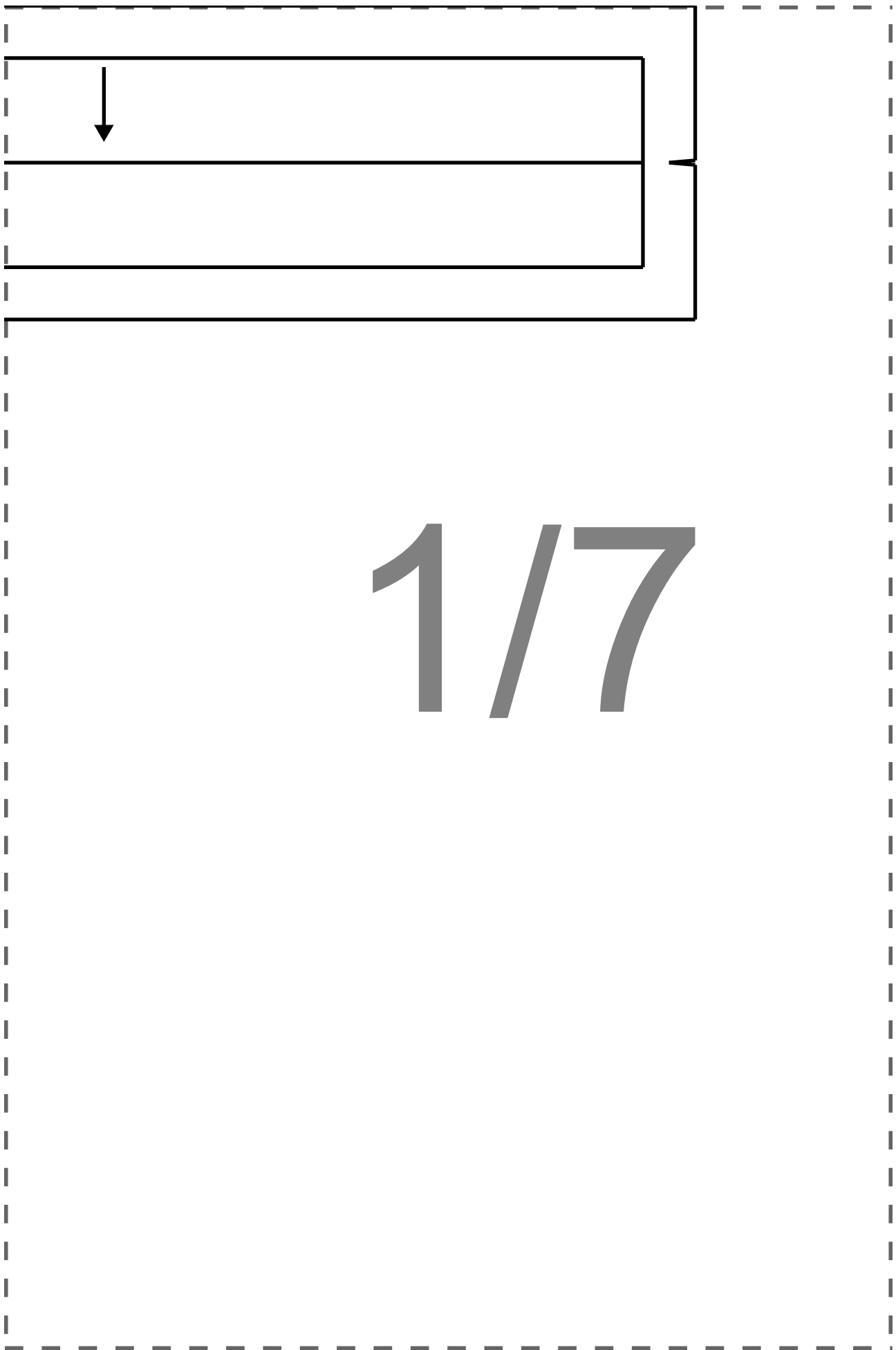
1/5



FOLD

ASTIC LENGTH 31.48 cm

1/6



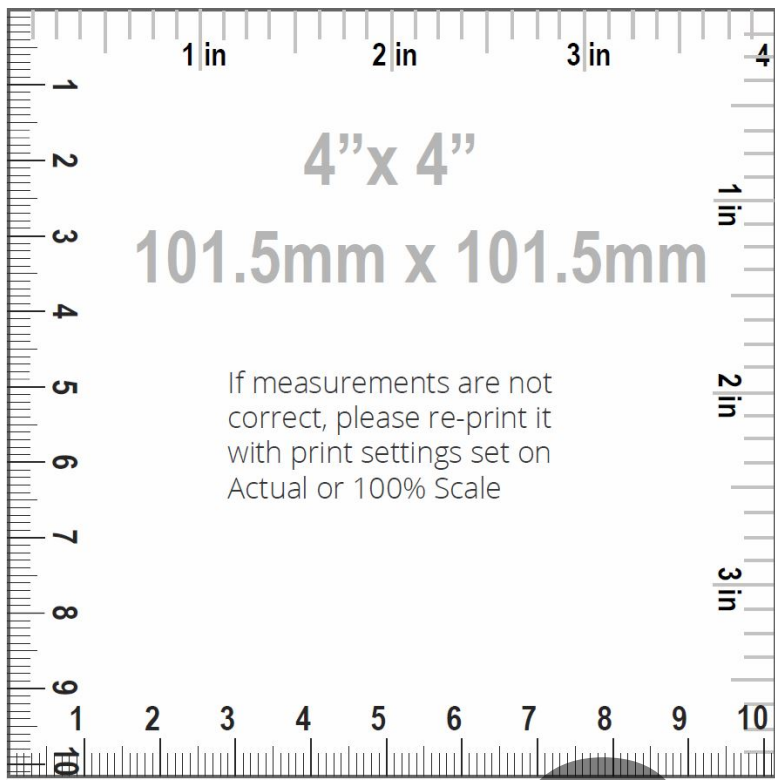


2/1

2/2



2/3



4"x 4"

101.5mm x 101.5mm

If measurements are not  
correct, please re-print it  
with print settings set on  
Actual or 100% Scale

2/4



A diagram showing a vertical strip within a dashed rectangular border. The strip is defined by two slightly curved vertical lines. A small horizontal line segment intersects the strip, with a short vertical tick mark on the left line. The label "3/1" is positioned to the right of the strip.

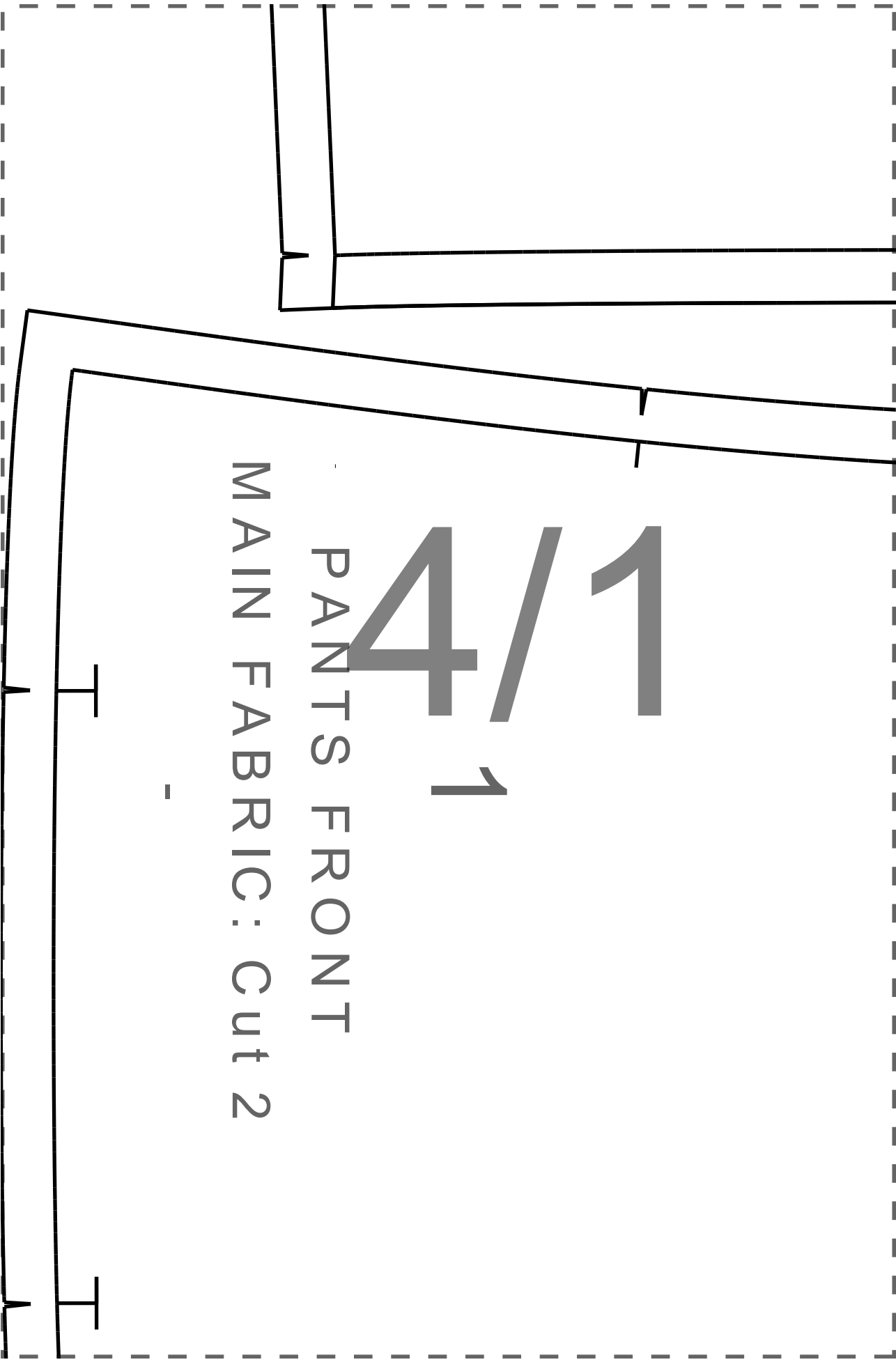
3/1

3/2





3/3



4/1

PANTS FRONT

MAIN FABRIC: Cut 2

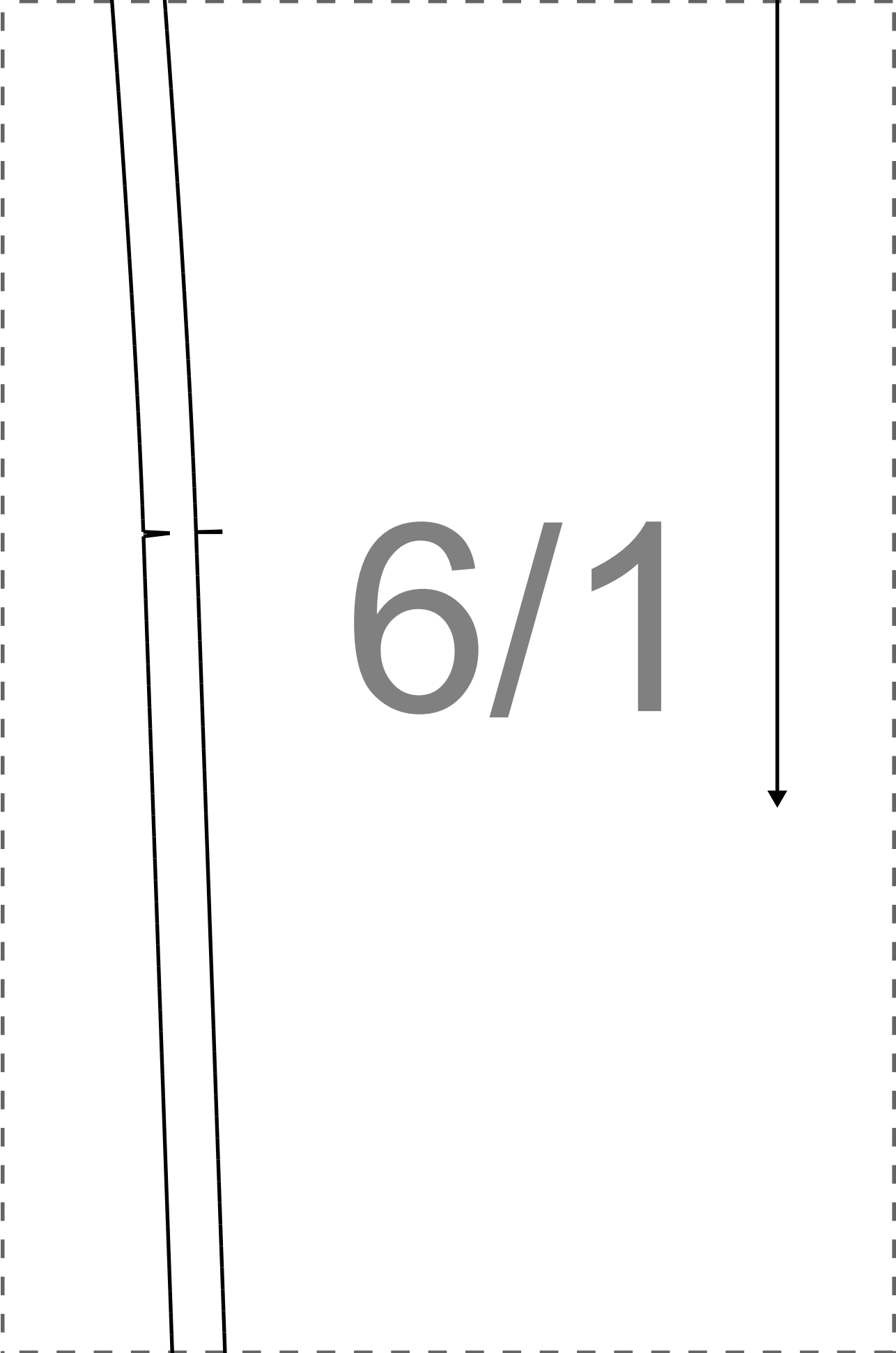


A technical drawing of a rectangular object, possibly a book cover or a folder, shown in a perspective view. The drawing is enclosed within a dashed rectangular border. The object has a main rectangular body and a smaller, slightly offset rectangular section on the right side, which appears to be a flap or a pocket. The lines are solid black, and the background is white. The text "4/2" is printed in a large, bold, gray font in the center of the drawing.

4/2

5/1

5/2



6/1

The diagram consists of a large rectangle defined by a dashed black border. Inside this rectangle, there are two solid black lines on the left side, slightly slanted towards the right. These two lines are connected at their top and bottom ends by short horizontal solid black segments. In the center of the rectangle, the text '6/1' is displayed in a large, bold, gray font. On the right side of the rectangle, there is a solid black vertical line that extends from the top dashed border to the bottom dashed border. This line terminates at the bottom with a solid black arrowhead pointing downwards.

6 1/2

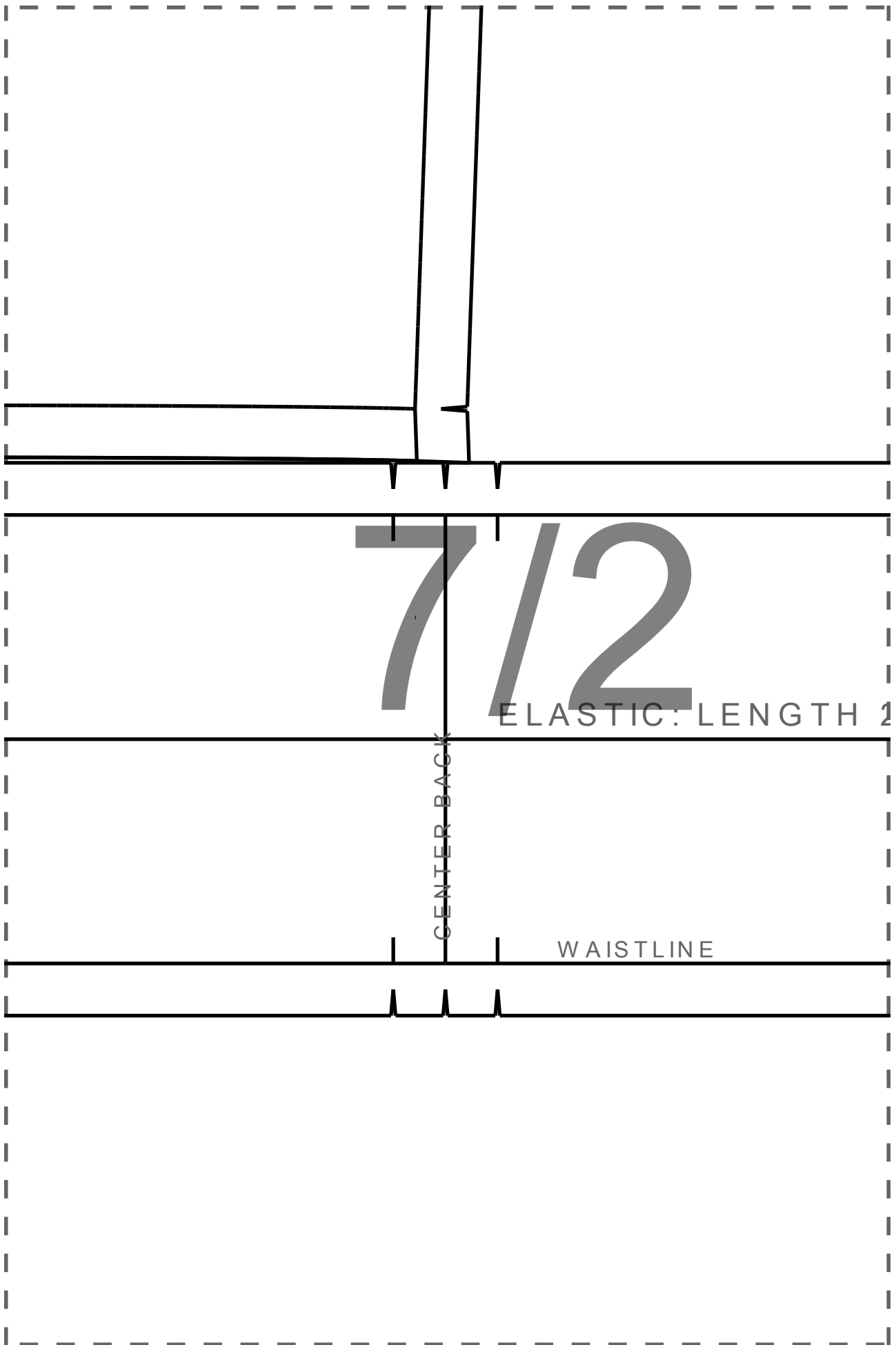
7/1

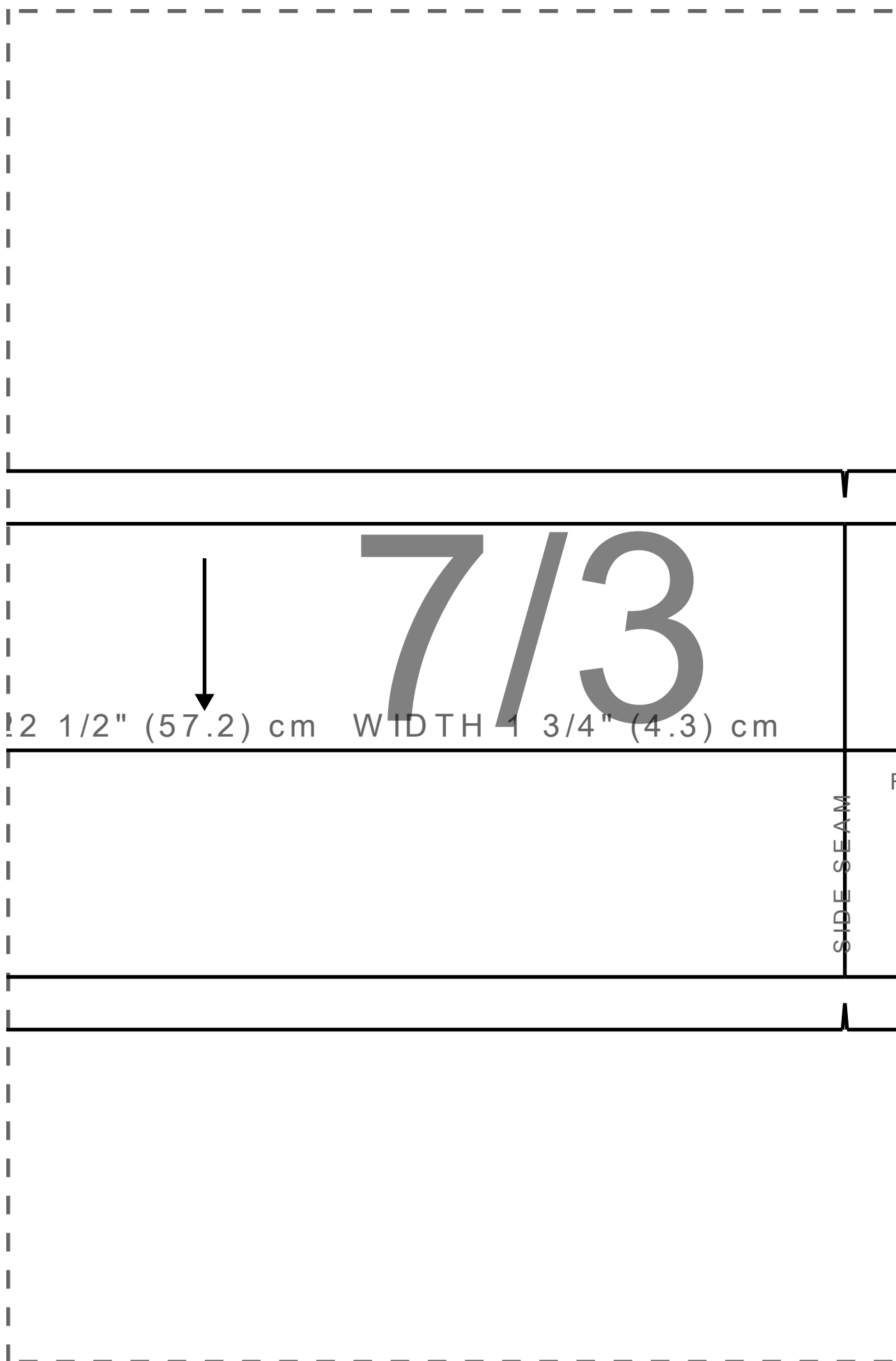
4

WAISTBAND  
MAIN FABRIC: Cut 1

SIDE SEAM







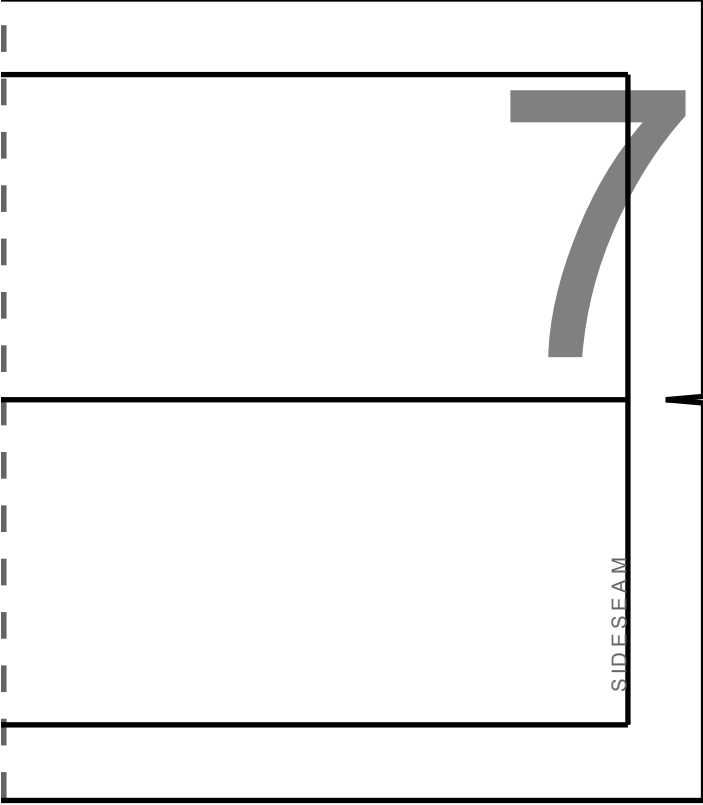
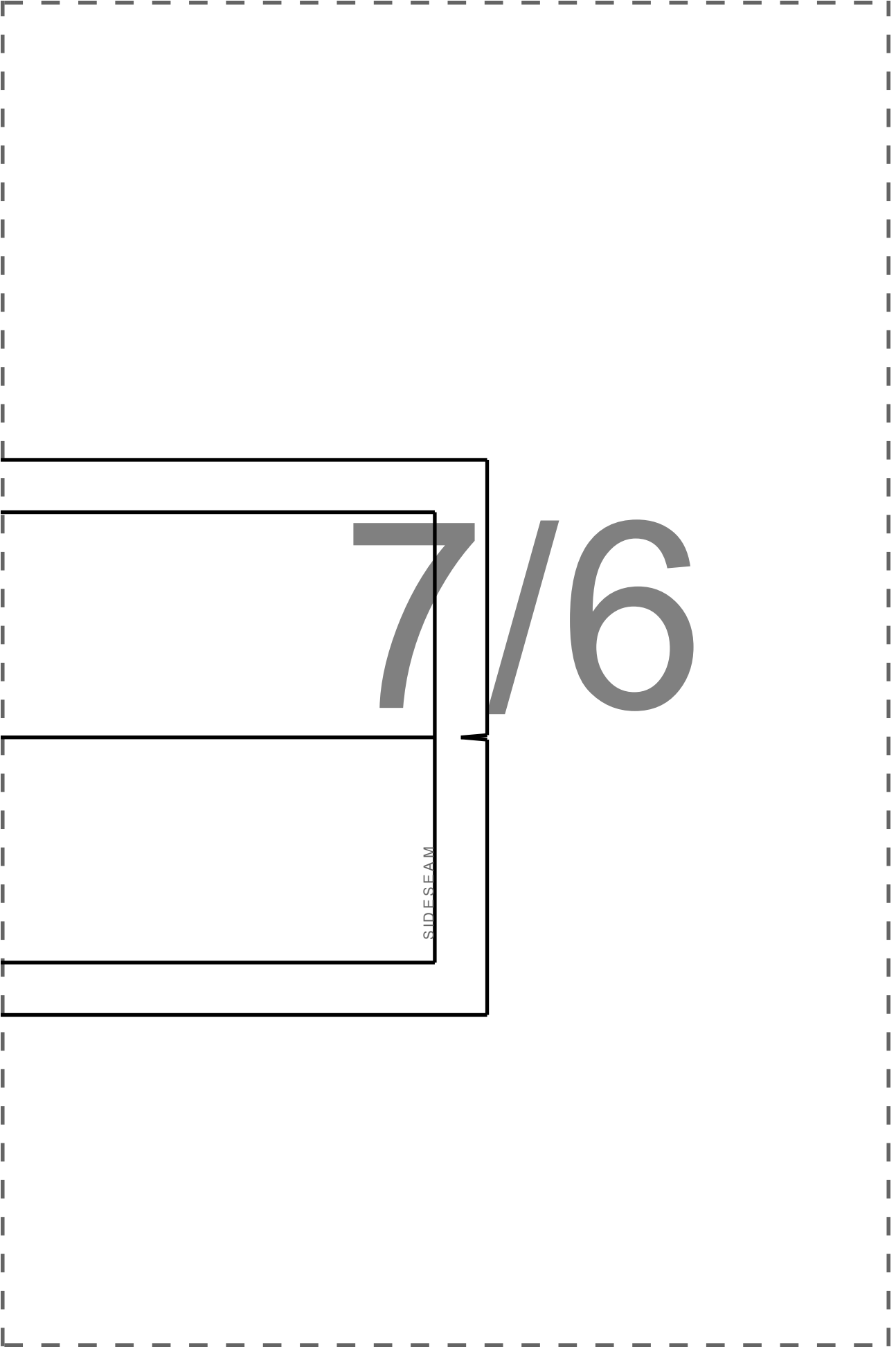
7/4

OLD

7/5

CENTER FRONT

WAISTLINE



7/6