



# Print this Calibration Test page first!

Size: Height: 170.00, Bust: 90.00, Waist: 68.50, Hips: 95.00  
Pattern Name: -

## Notes

---

---

---

---

---

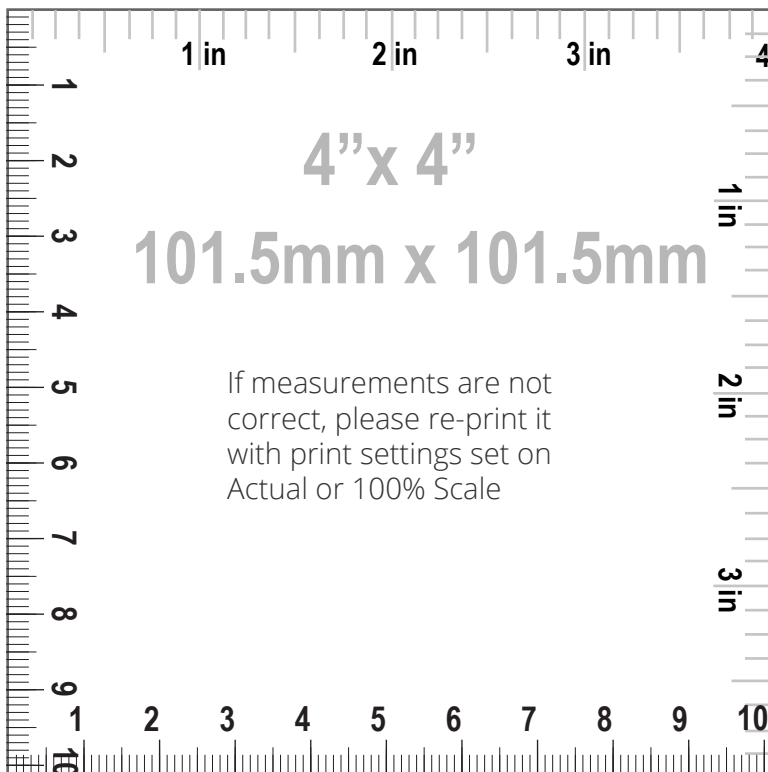
---

## HOW TO PRINT



### Printing

1. Once your Calibration Test Page has been printed, measure the 4"x 4" (10cm) scale box with a ruler. If the lengths match, you can confidently print your pattern. If the rulers do not match, set your print settings to 100% or Actual and retry.



### Cutting

Your printouts will always have a dashed border to perfectly match your sheets. Cut off the right edge of each page. Be careful not to cut beyond the dashed mark, otherwise your patterns will not align accurately.



### Taping

1. Group each sheet by the second number marked on each page i.e. in a group 1, there are: 1/1, 2/1, 3/1, 4/1, etc. In a group 2: 1/2, 2/2 etc.  
2. Place page 1/1 on top of the page 2/1, overlapping the right side edge. Match corners and crosses and secure with a pin or tape. Then use a scotch tape to permanently attach the sheets together.



Pattern Name: -

Seam Allowance: 1.00 (0.39 in)

Pattern pieces:

- |  |   |
|--|---|
| 1, CENTER FRONT, MAIN FABRIC: Cut 1      | 5, LEFT CENTER BACK, MAIN FABRIC: Cut 1 |
| 2, RIGHT SIDE FRONT, MAIN FABRIC: Cut 1  | 6, RIGHT SIDE BACK, MAIN FABRIC: Cut 1  |
| 3, LEFT SIDE FRONT, MAIN FABRIC: Cut 1   | 7, LEFT SIDE BACK, MAIN FABRIC: Cut 1   |
| 4, RIGHT CENTER BACK, MAIN FABRIC: Cut 1 |   |

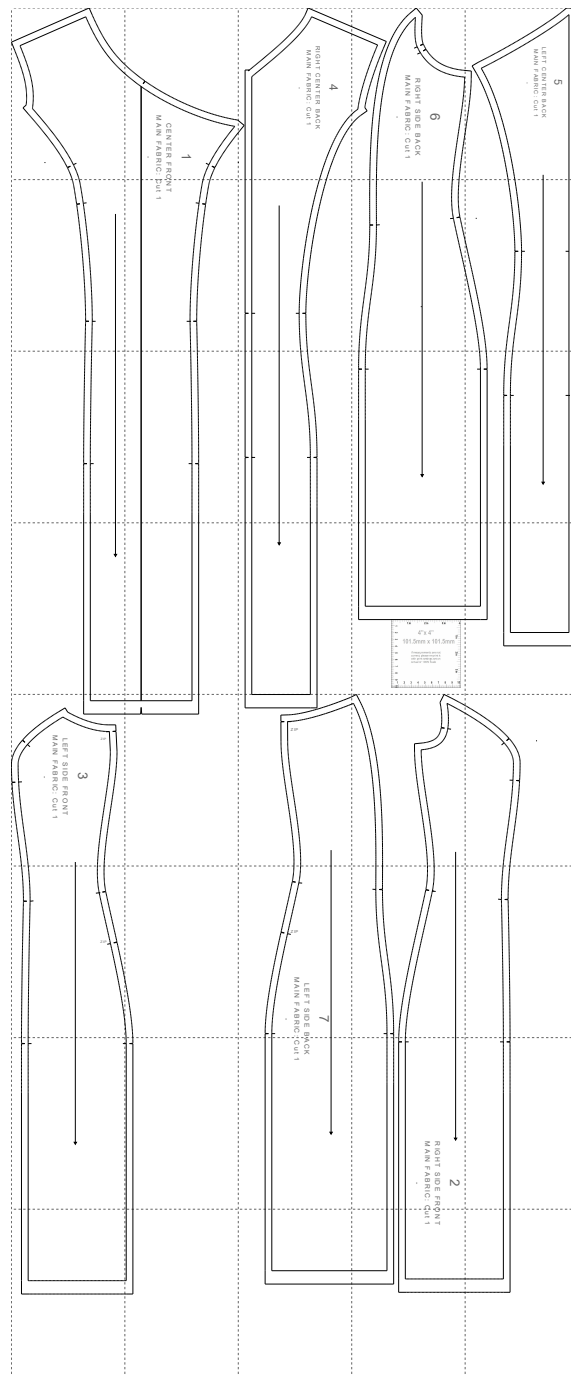
Pattern Specs (Circumferences are divided by 2):

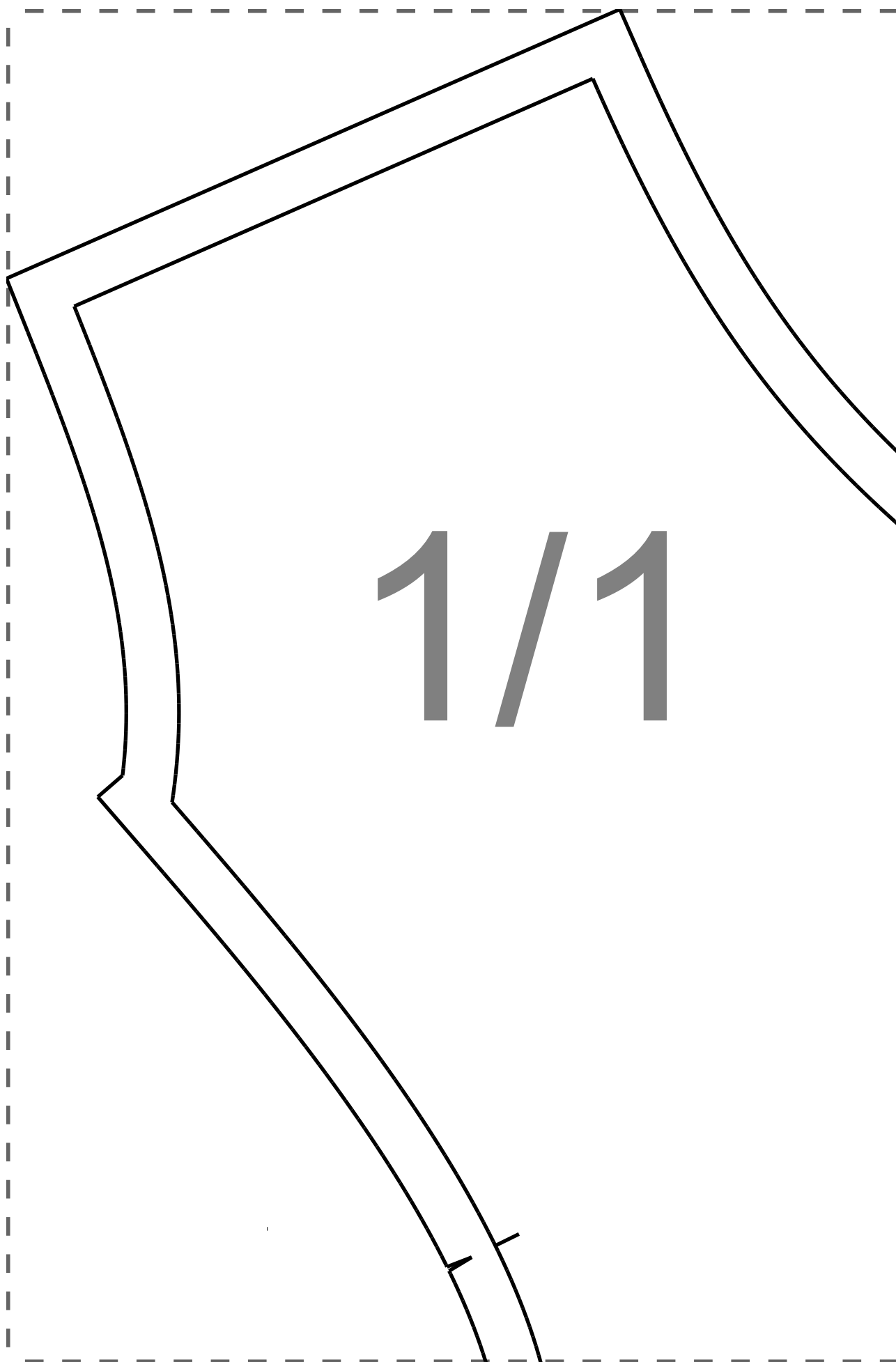
- |  |  |
|--|--|
| 1. Dress side invisible zipper length 35.00 (13.78 in) | 11. Low hips 48.32 (19.02 in)            |
| 2. Front length from HPS to hem 102.84 (40.49 in)      | 12. Hemline sweep 48.32 (19.02 in)       |
| 3. Across chest 46.58 (18.34 in)                       | 13. Armhole length front 19.11 (7.52 in) |
| 4. Center front length to hem 92.00 (36.22 in)         | 14. Armhole length back 23.42 (9.22 in)  |
| 5. Center back length to hem 92.57 (36.44 in)          | 15. Front neck drop 10.84 (4.27 in)      |
| 6. Across front 30.45 (11.99 in)                       | 16. Back neck drop 9.44 (3.72 in)        |
| 7. Across back 31.78 (12.51 in)                        | 17. Shoulder width 10.76 (4.24 in)       |
| 8. Across shoulders 36.99 (14.56 in)                   | 18. Apex to apex 18.24 (7.18 in)         |
| 9. Side seam 79.79 (31.41 in)                          |  |
| 10. Waist 36.29 (14.29 in)                             |  |



Paper Size: A4;

Print Actual Size (100% Scale);



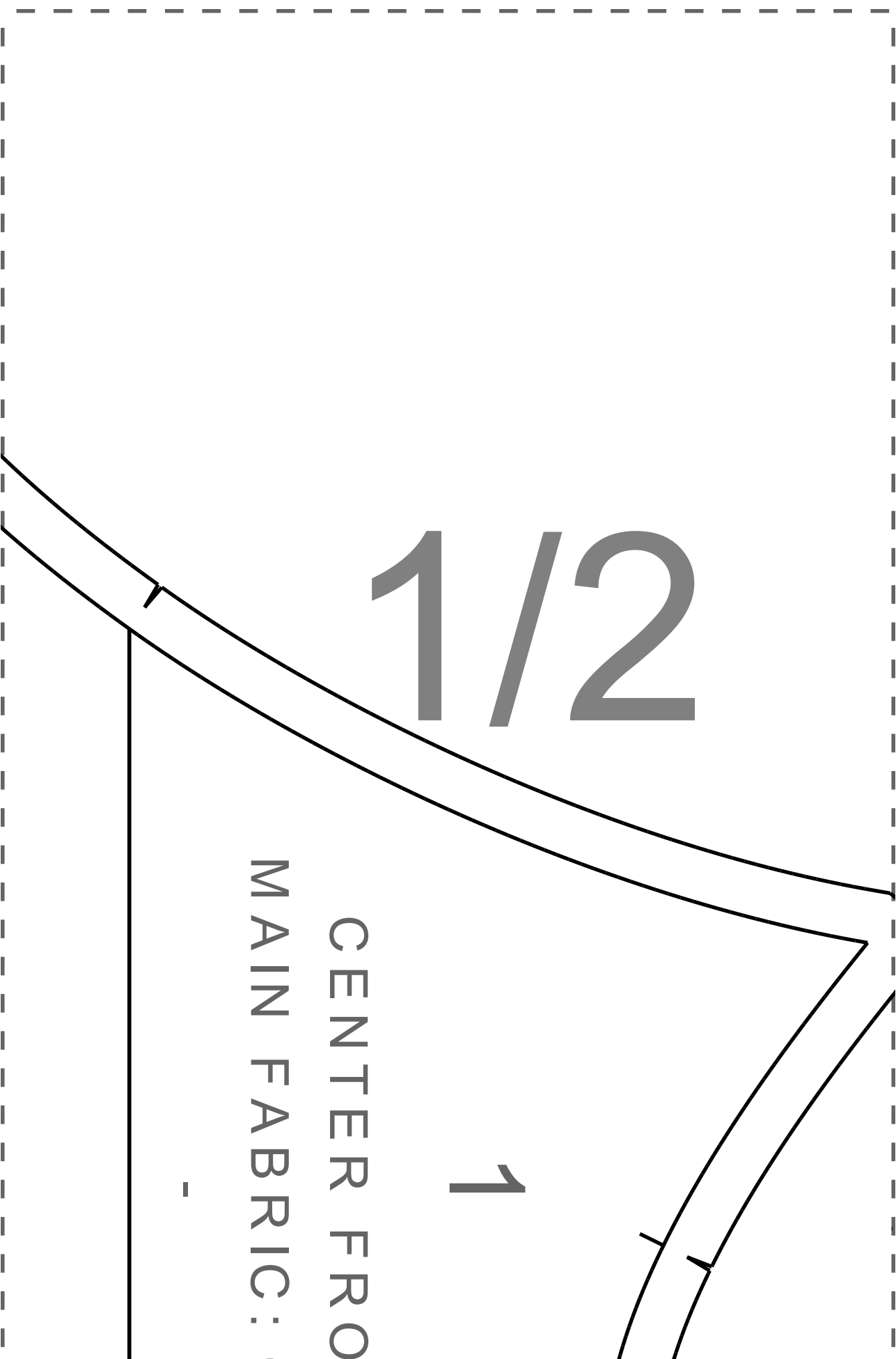


1/2

1

CENTER FRO  
MAIN FABRIC:

-

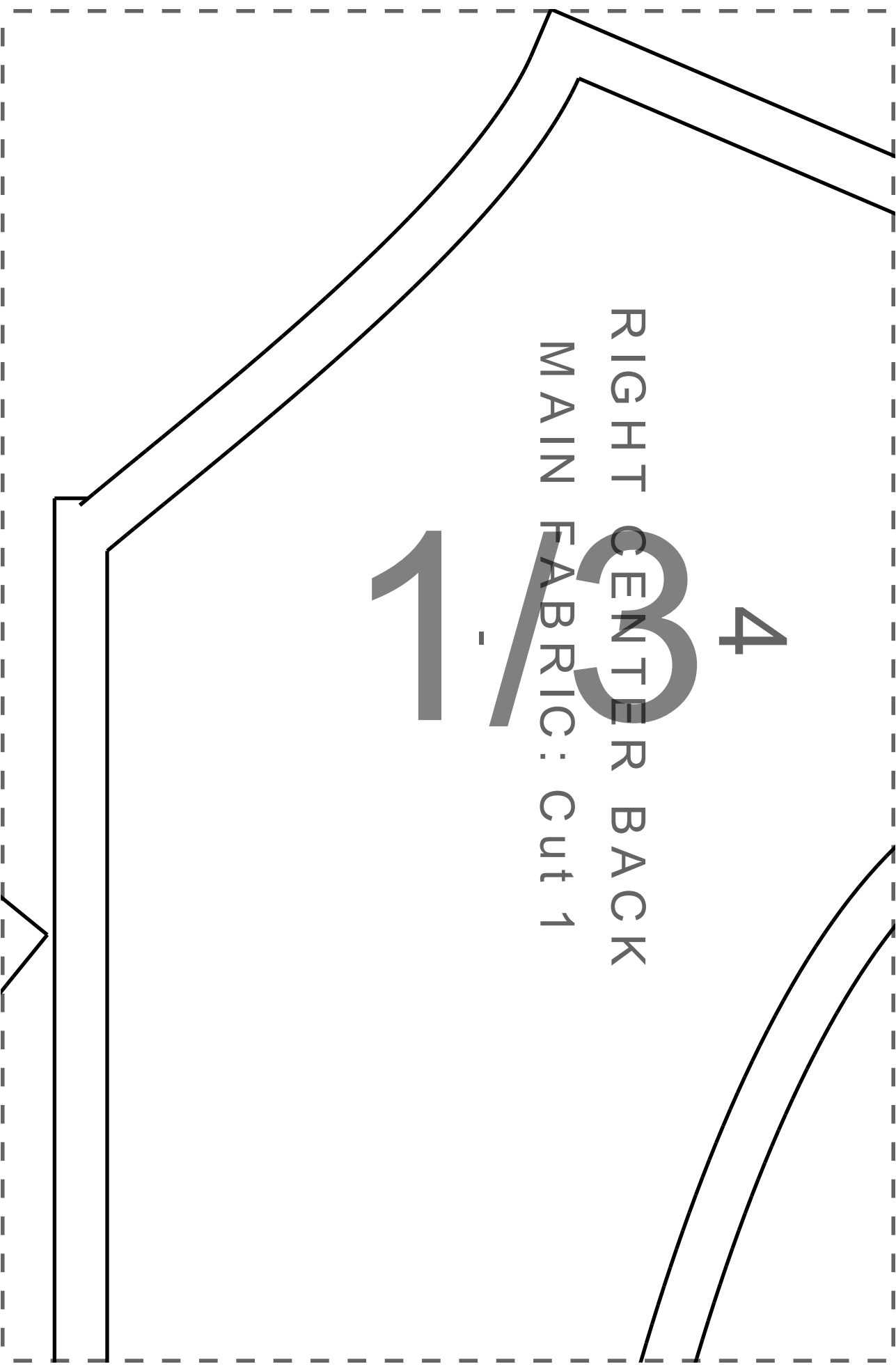


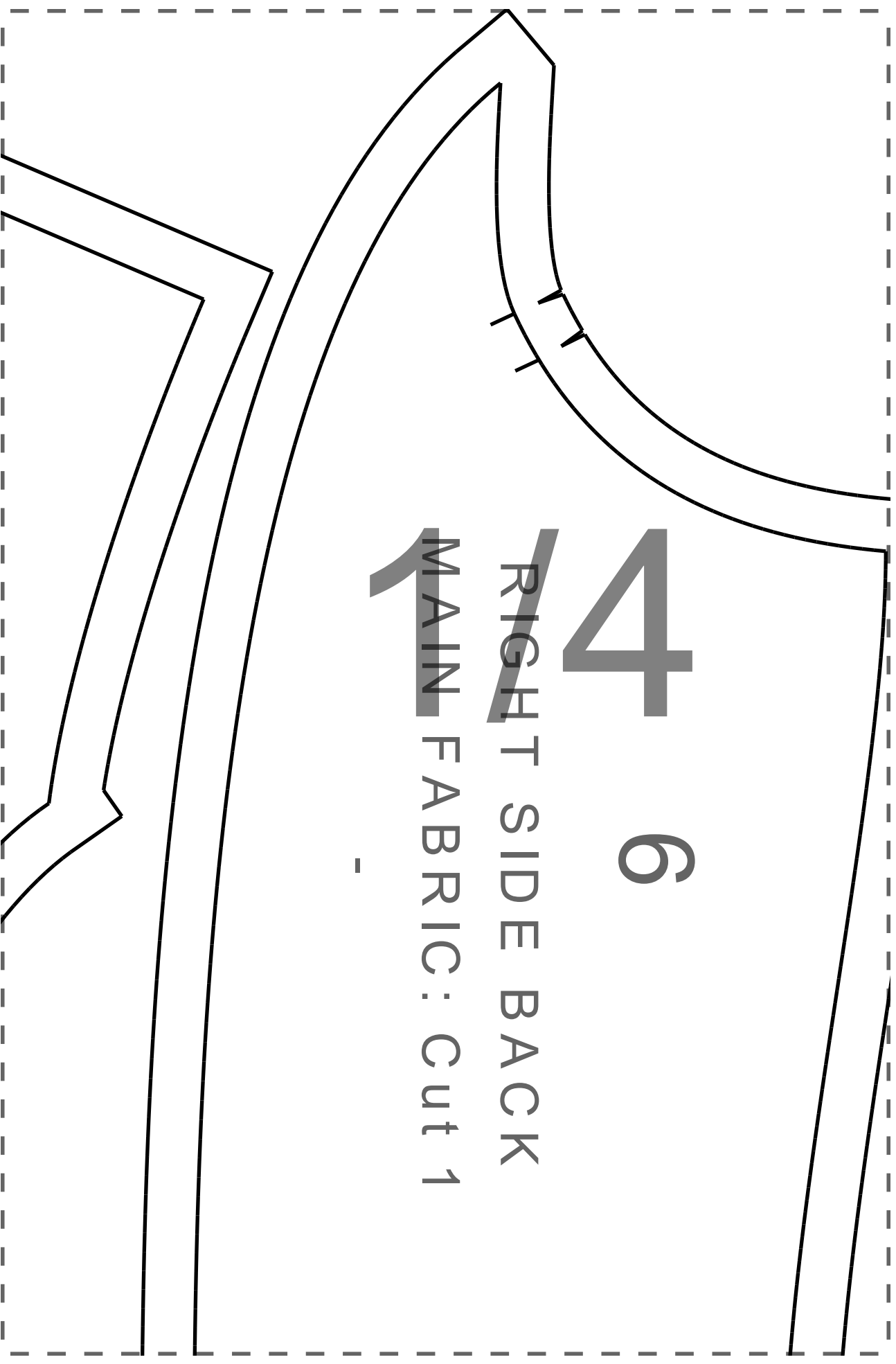
4

RIGHT CENTER BACK

MAIN FABRIC: Cut 1

1/3

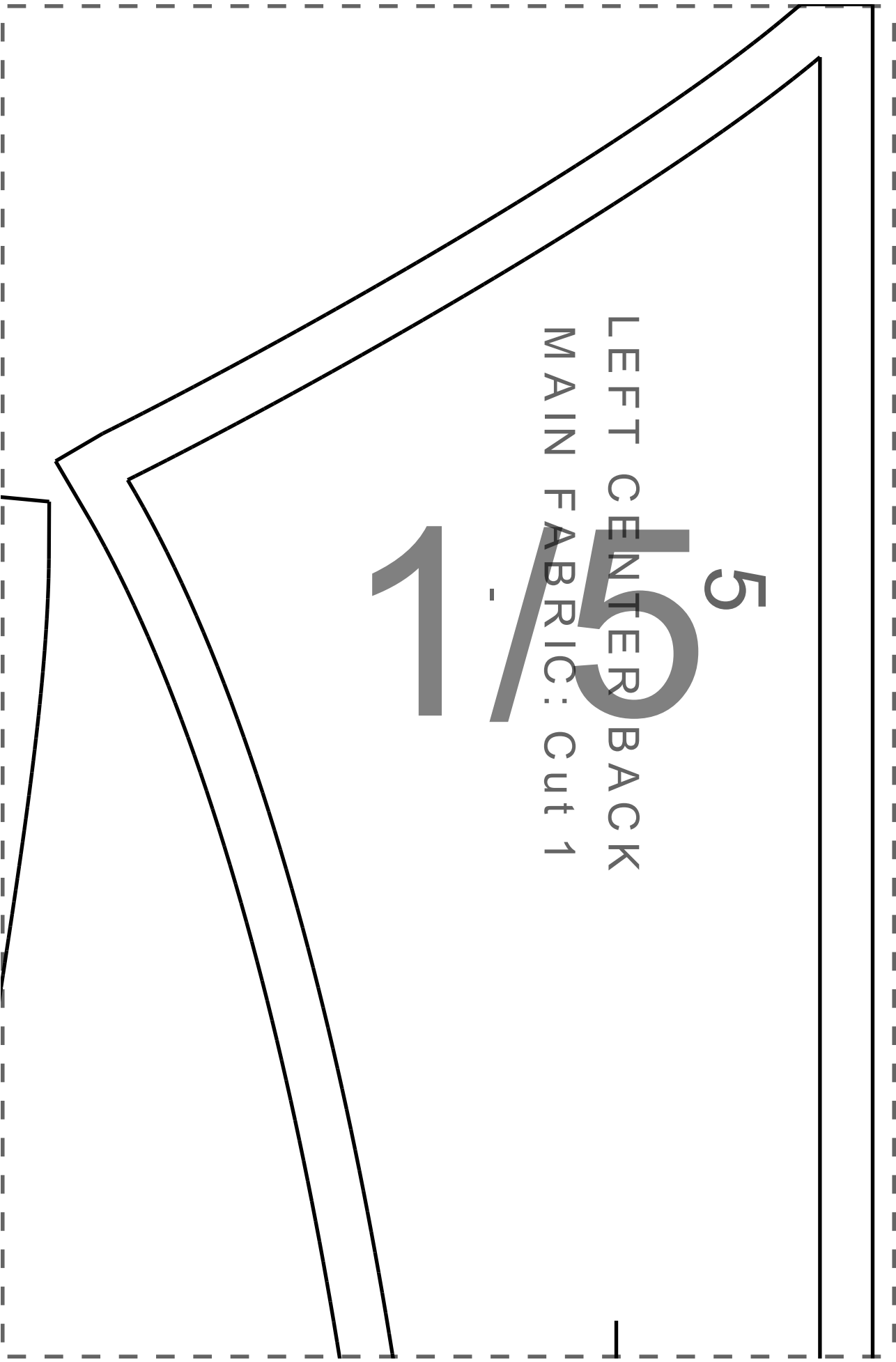




4 6

RIGHT SIDE BACK

MAIN FABRIC: Cut 1



5

LEFT CENTER BACK

MAIN FABRIC: Cut 1

1/5

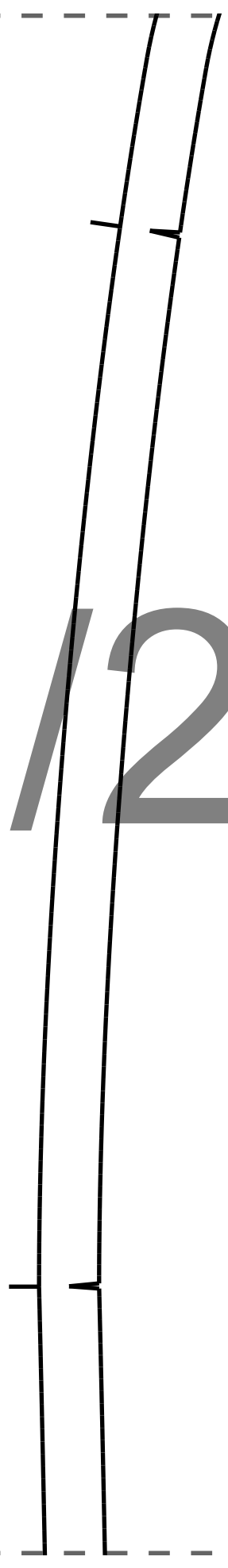


2/1

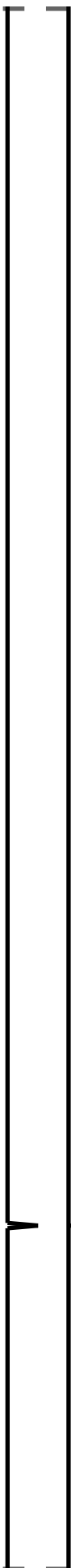
2/2

NT

cut 1



2/3



2/4

2/5

3/1

3/2

1

3/3





The diagram shows a rectangular sheet with a dashed border. Inside, there are two vertical lines on the left side, each with a small horizontal tick mark at the top. A third vertical line is on the right side, with a downward-pointing arrow at its base. The fraction 3/4 is centered in the middle of the sheet.

3/4

3/5



4/1

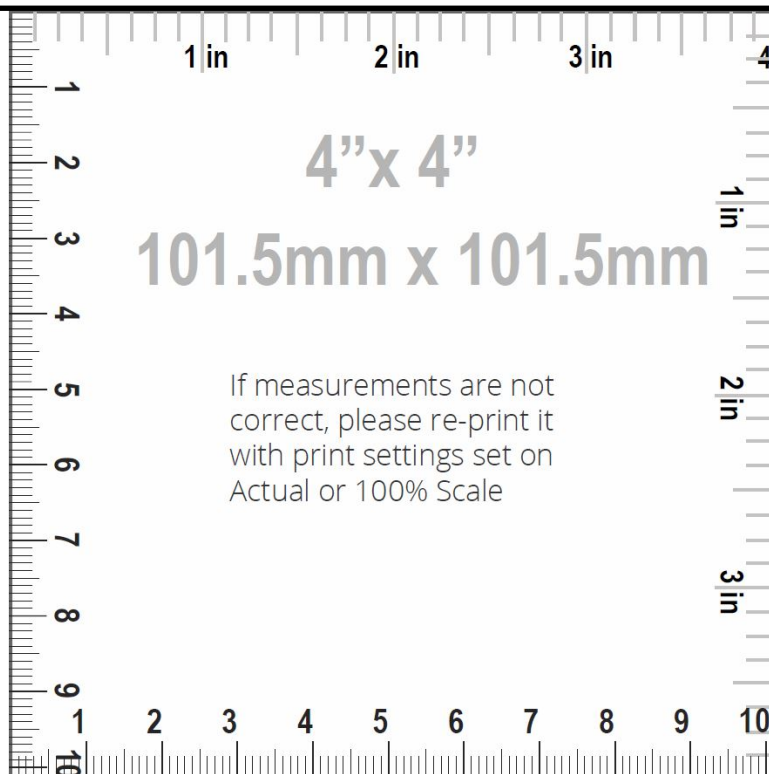


4/2



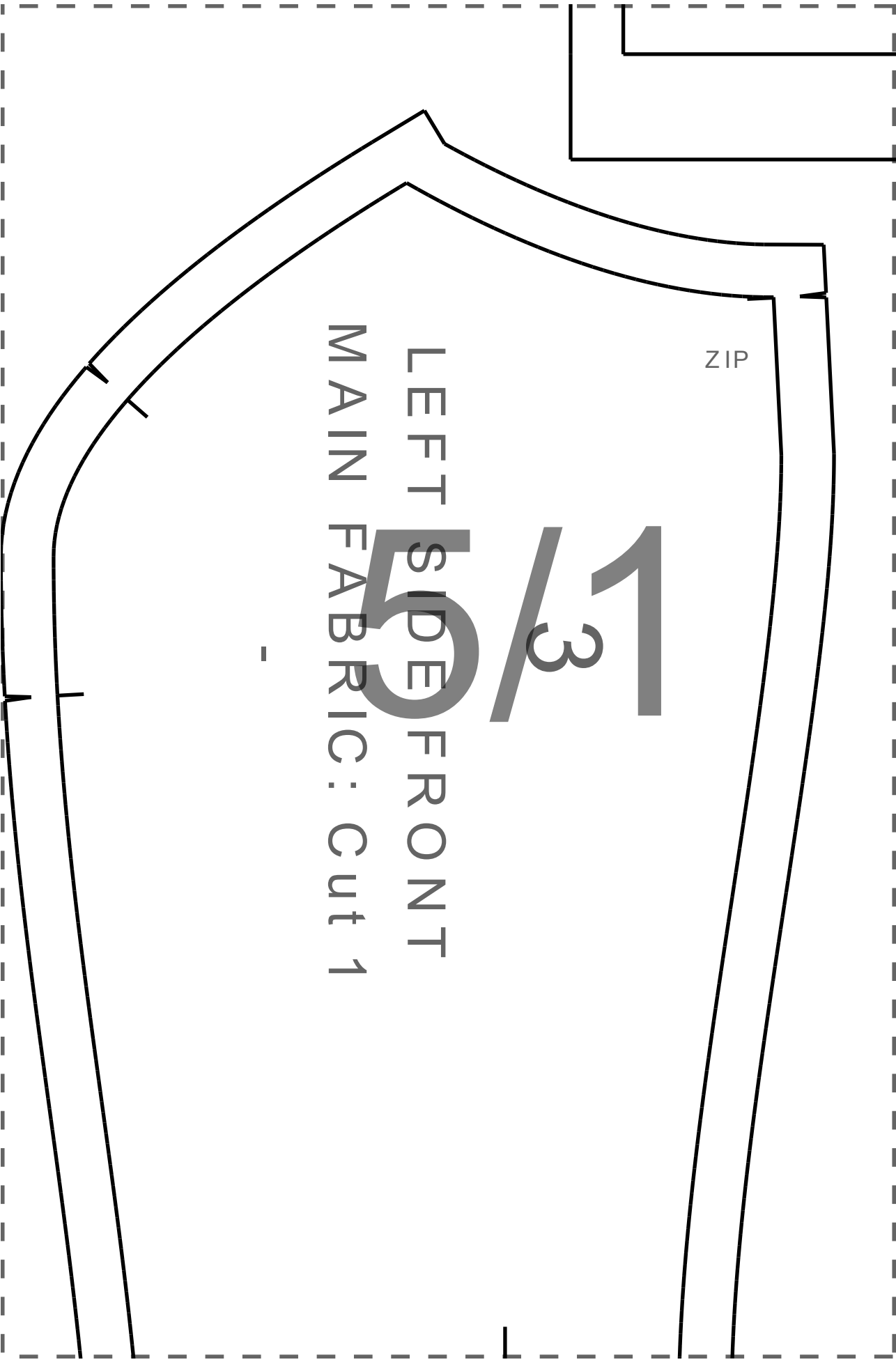
4/3

4/4





$\frac{4}{5}$



ZIP

5/31

LEFT SIDE FRONT  
MAIN FABRIC: Cut 1





5/2

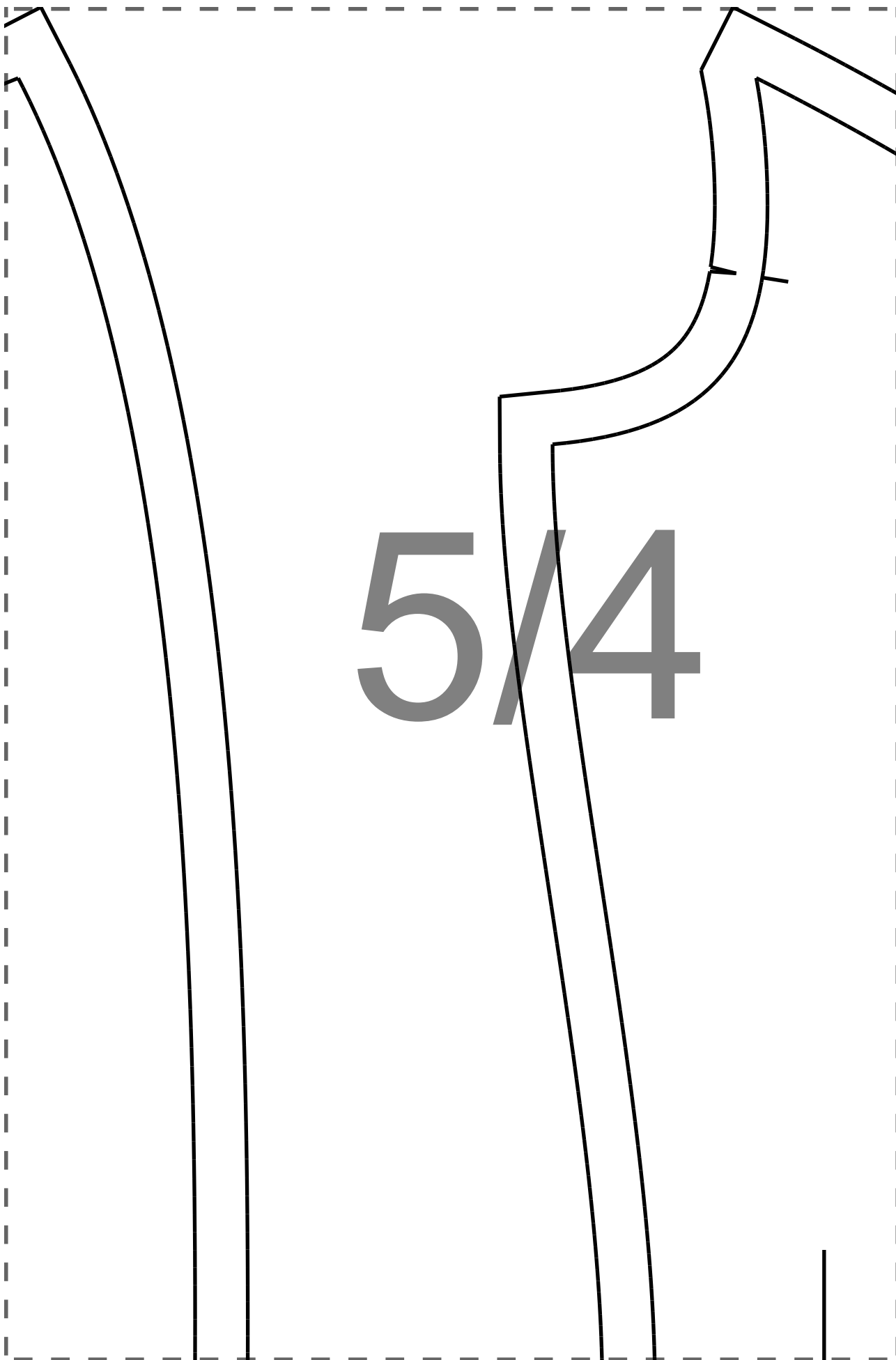


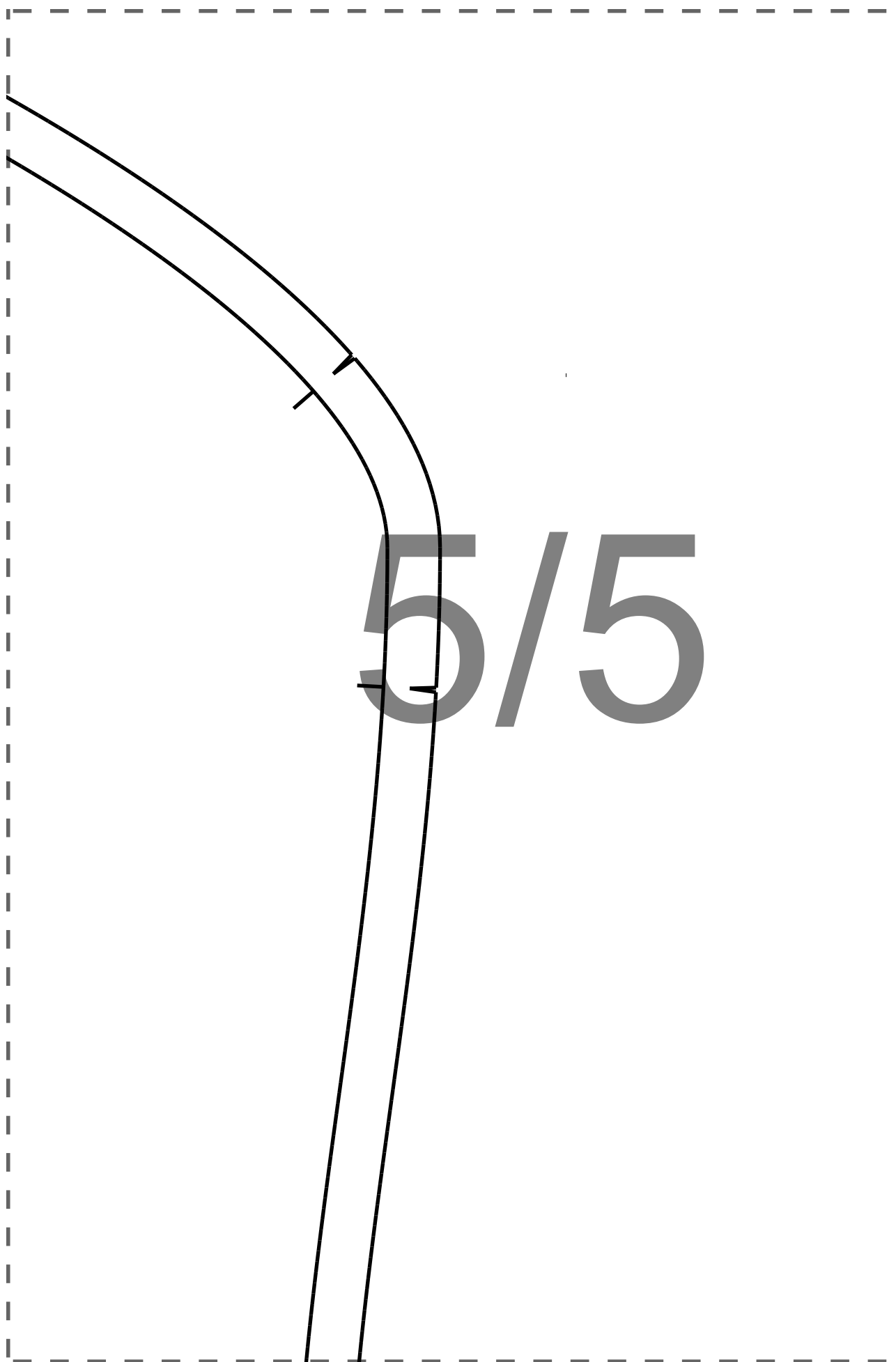
ZIP

5/3



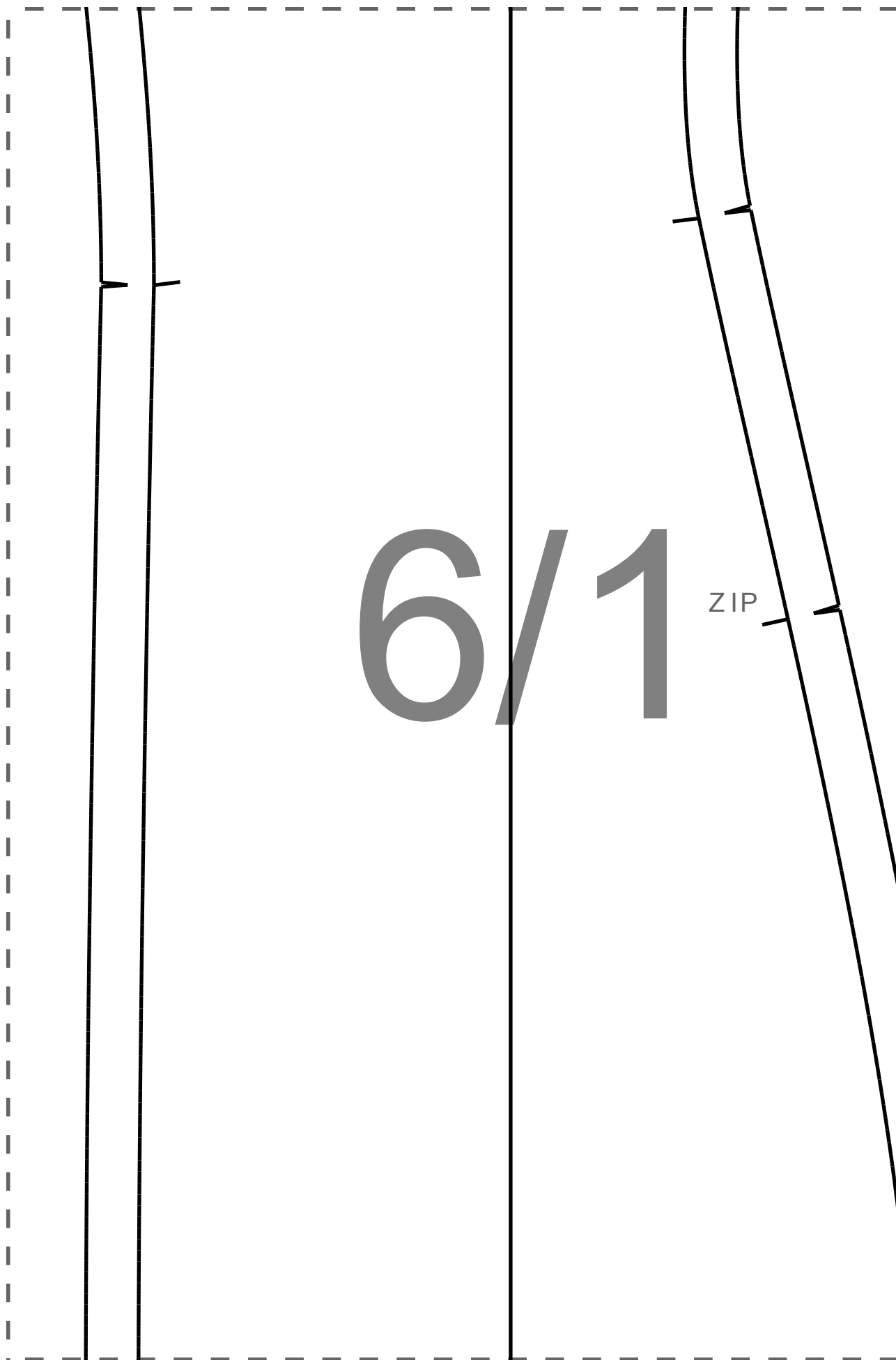
5/4





6/1

ZIP



6/2

6/3

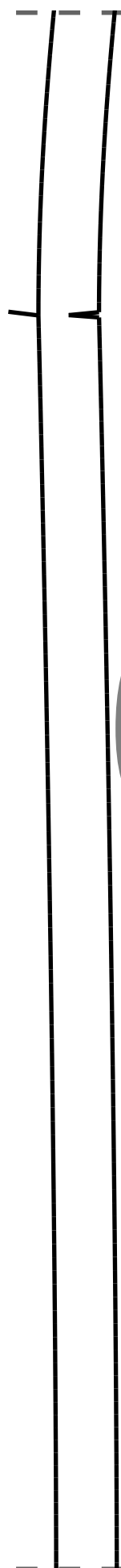
ZIP

7

LEFT SIDE B  
MAIN FABRIC:

6/4





6/5

7/1





7/2

ACK

Cut 1

7/3



2



4 1/4

RIGHT SIDE FROG  
MAIN FABRIC: C

-



7/5



8/1



8/2





8/3

UNT  
ut 1

8/4

