



Print this Calibration Test page first!

Size: Height: 127.00, Bust: 63.50, Waist: 57.80, Hips: 66.70
Pattern Name: -

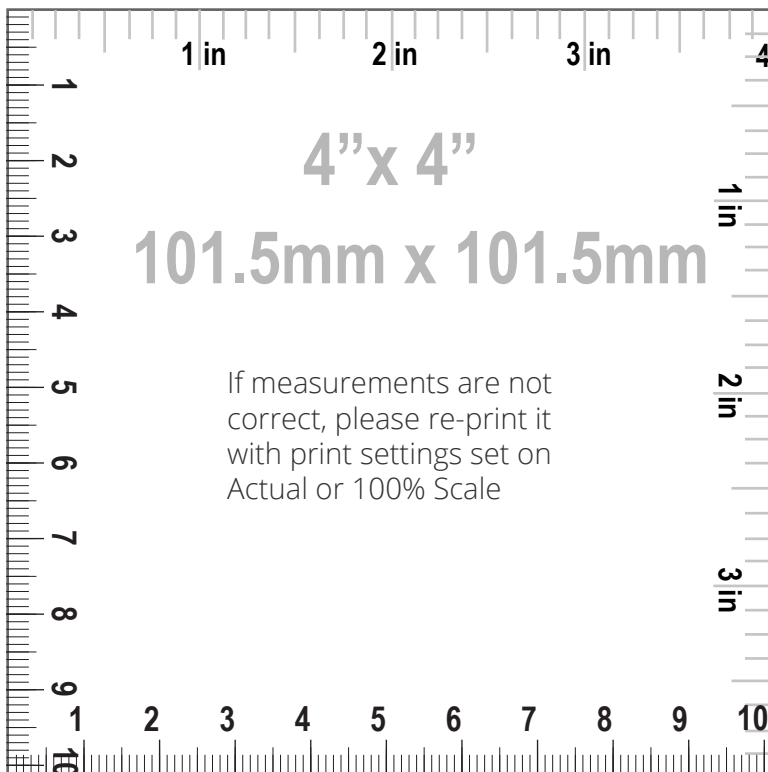
Notes

HOW TO PRINT



Printing

1. Once your Calibration Test Page has been printed, measure the 4"x 4" (10cm) scale box with a ruler. If the lengths match, you can confidently print your pattern. If the rulers do not match, set your print settings to 100% or Actual and retry.



Cutting

Your printouts will always have a dashed border to perfectly match your sheets. Cut off the right edge of each page. Be careful not to cut beyond the dashed mark, otherwise your patterns will not align accurately.



Taping

1. Group each sheet by the second number marked on each page i.e. in a group 1, there are: 1/1, 2/1, 3/1, 4/1, etc. In a group 2: 1/2, 2/2 etc.
2. Place page 1/1 on top of the page 2/1, overlapping the right side edge. Match corners and crosses and secure with a pin or tape. Then use a scotch tape to permanently attach the sheets together.



Pattern Name: -

Seam Allowance: 1.00 (0.39 in)

Pattern pieces:

1, FRONT, MAIN FABRIC: Cut 1

2, BACK, MAIN FABRIC: Cut 1

3, STRAP, MAIN FABRIC: Cut 2, FUSIBLE

INTERFACING: Cut 2

4, PATCH POCKET, MAIN FABRIC: Cut 2

Pattern Specs (Circumferences are divided by 2):

1. Front length from HPS to hem 77.56 (30.54 in)

2. Across chest 33.25 (13.09 in)

3. Center front length to hem 64.25 (25.30 in)

4. Center back length to hem 65.51 (25.79 in)

5. Across front 19.55 (7.70 in)

6. Across back 20.86 (8.21 in)

7. Top side seam 57.34 (22.57 in)

8. Waist 41.53 (16.35 in)

9. Hips 53.49 (21.06 in)

10. Hemline sweep 71.92 (28.31 in)

11. Armhole length front 10.67 (4.20 in)

12. Armhole length back 10.47 (4.12 in)

13. Front neck drop 13.31 (5.24 in)

14. Back neck drop 10.80 (4.25 in)

15. Pocket entry length 10.63 (4.19 in)

16. Strap width 0.70 (0.28 in)

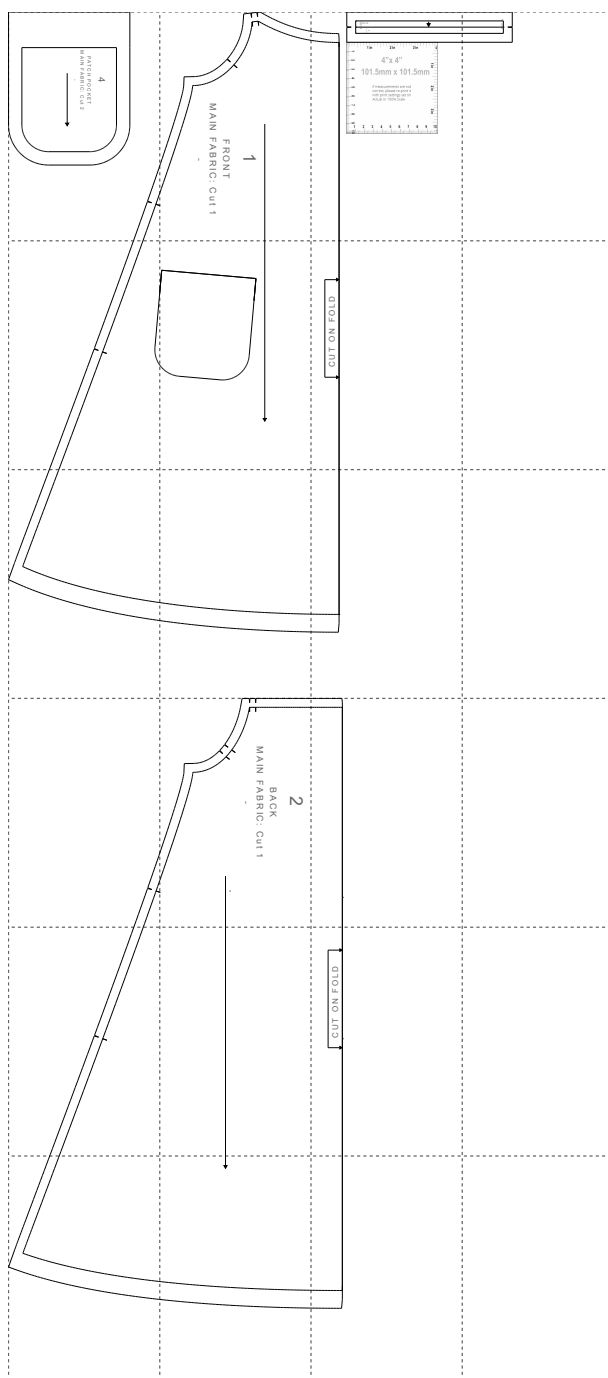
17. Strap length 16.59 (6.53 in)

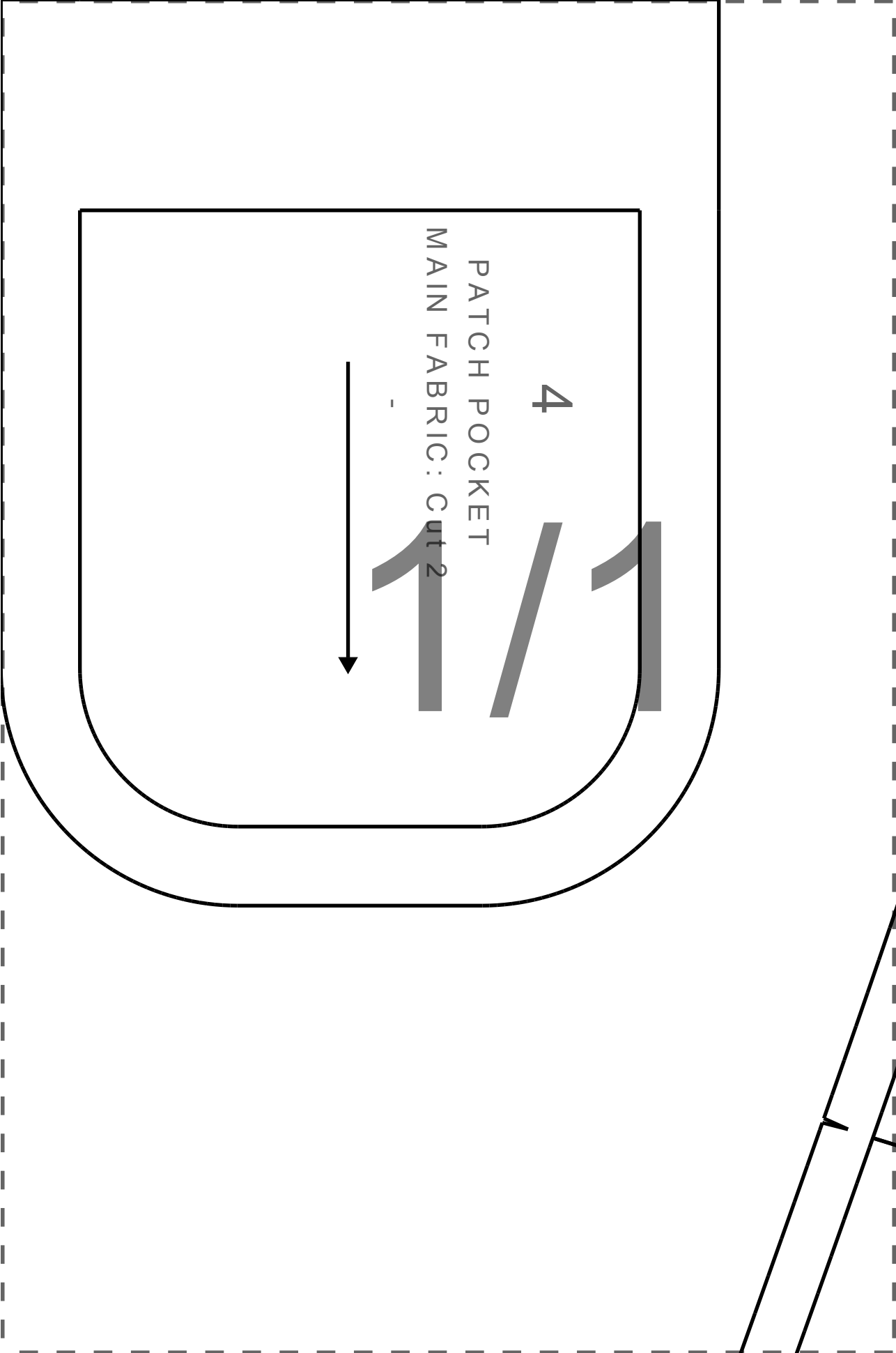
18. Pocket height 11.69 (4.60 in)

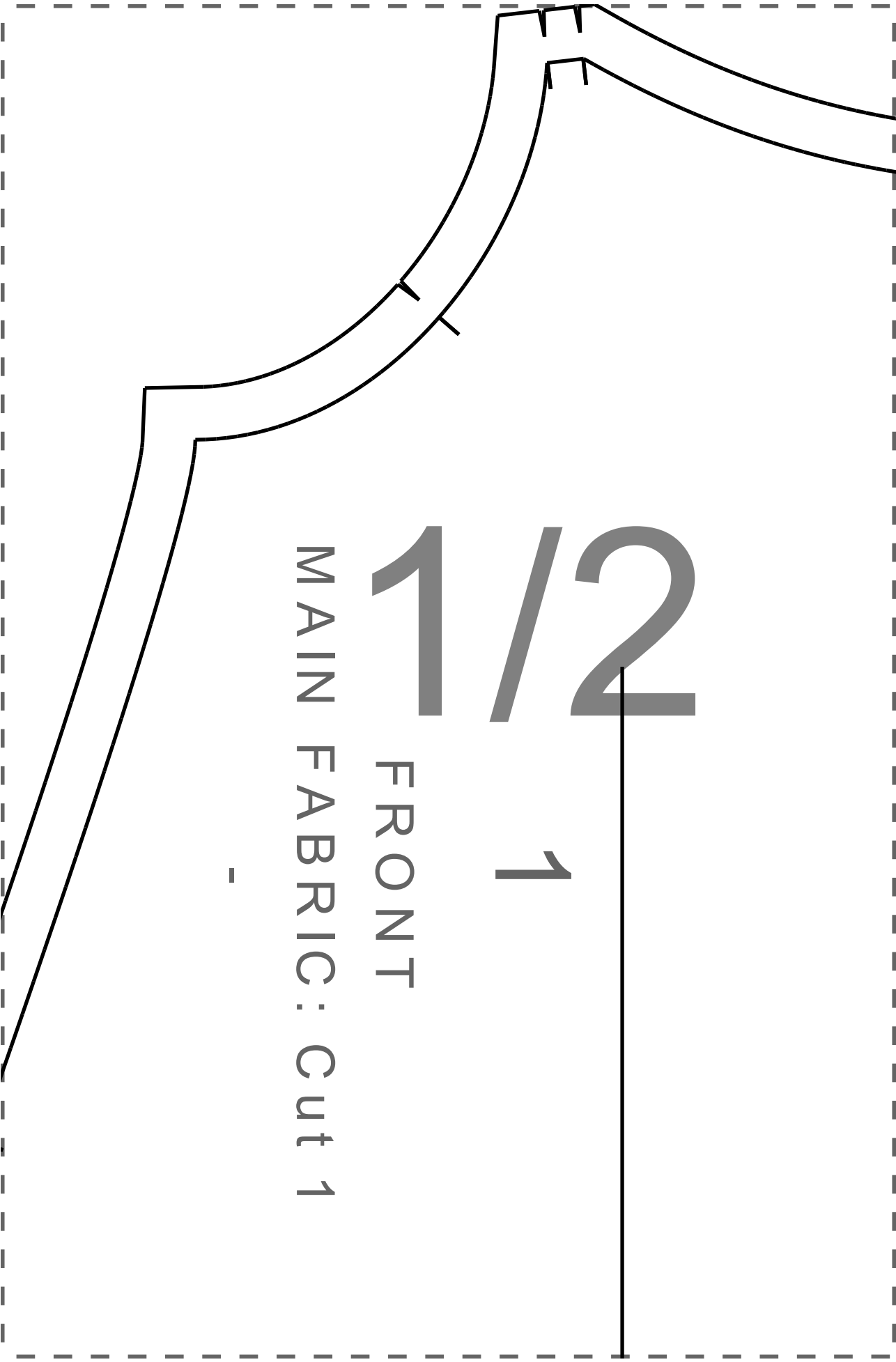


Paper Size: A4;

Print Actual Size (100% Scale);







1/2

1

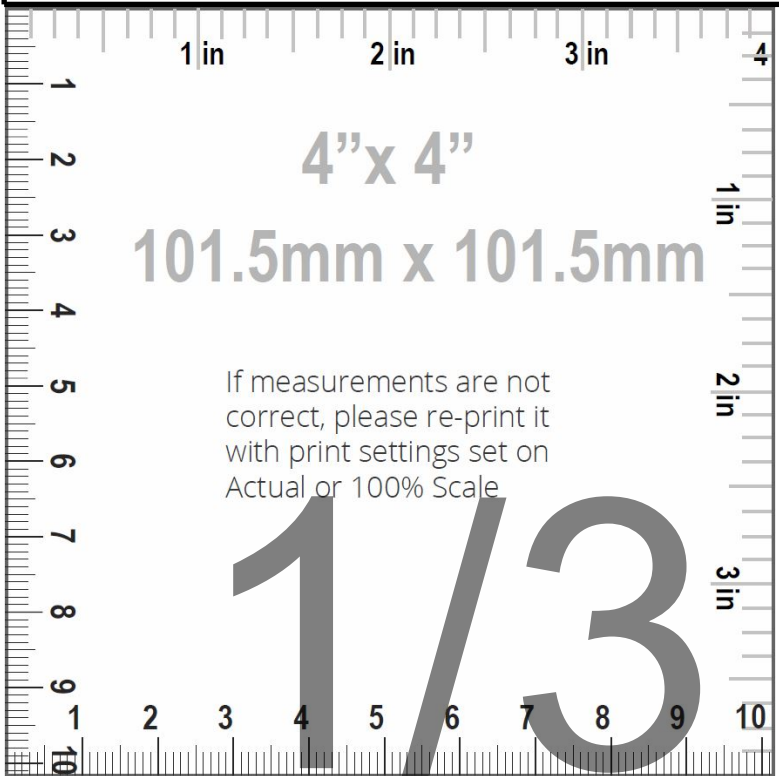
FRONT

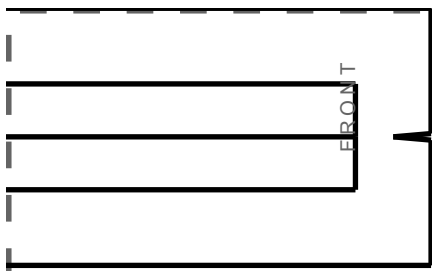
MAIN FABRIC: Cut 1

-

BACK
STRAP
3

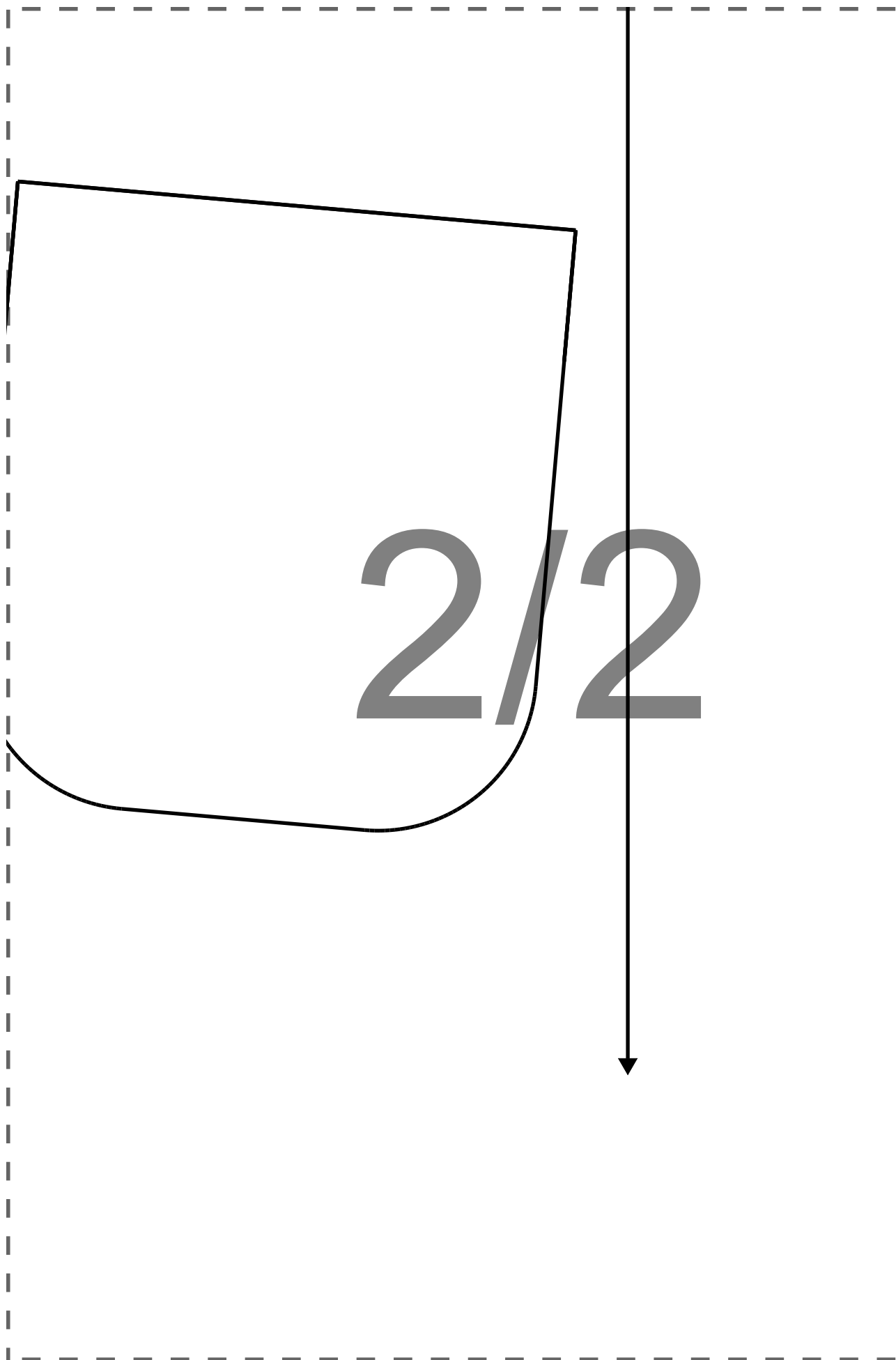
↓





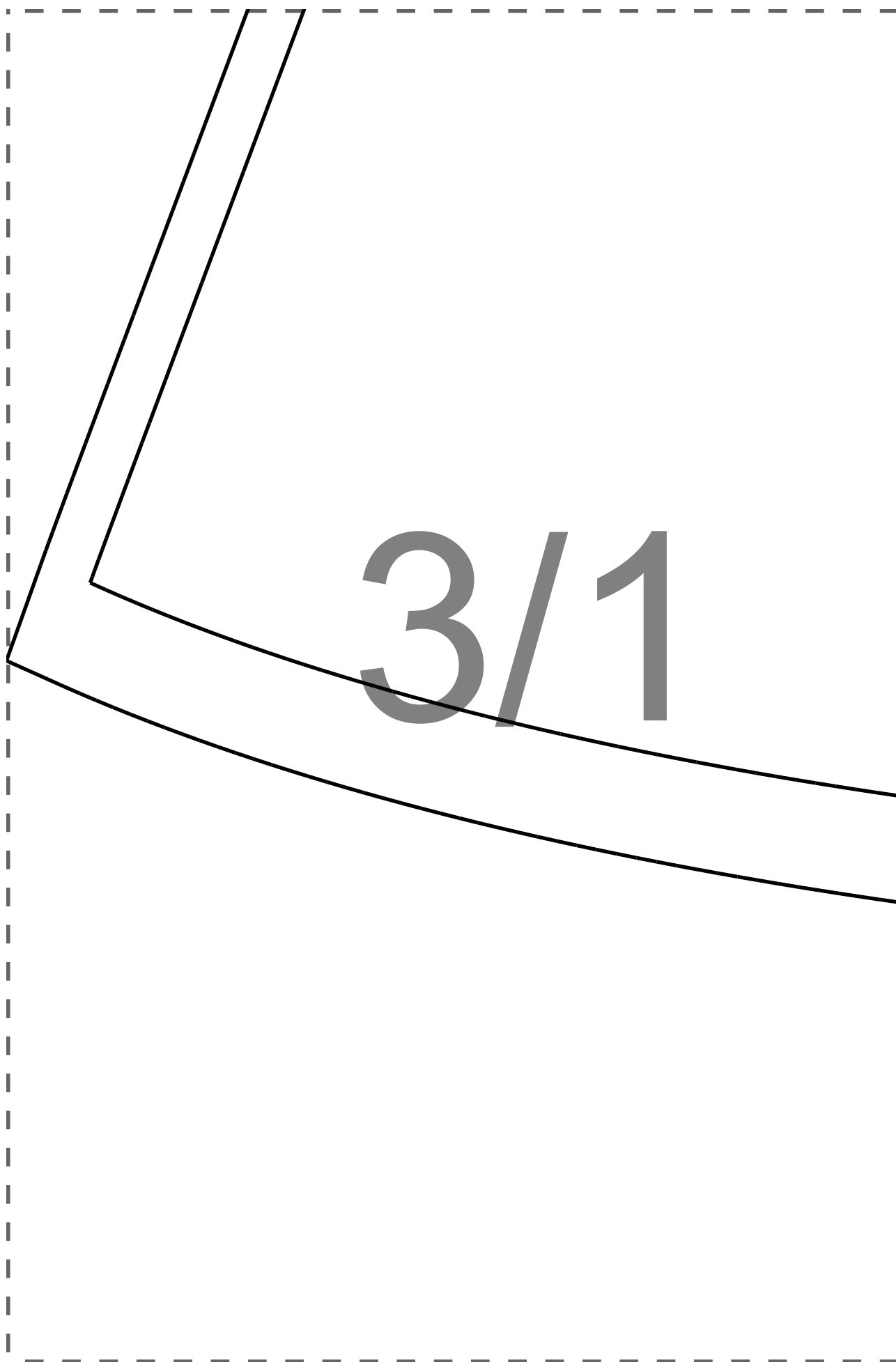
1/4

2/1



CUT ON FOLD

2/3



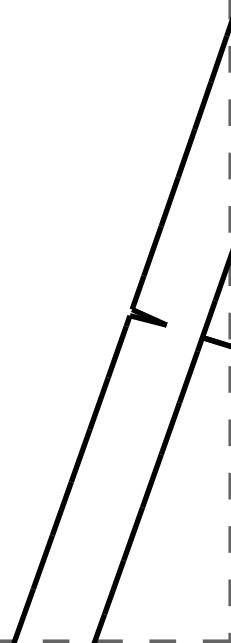
3/1

$3/2$



3/3

4/1

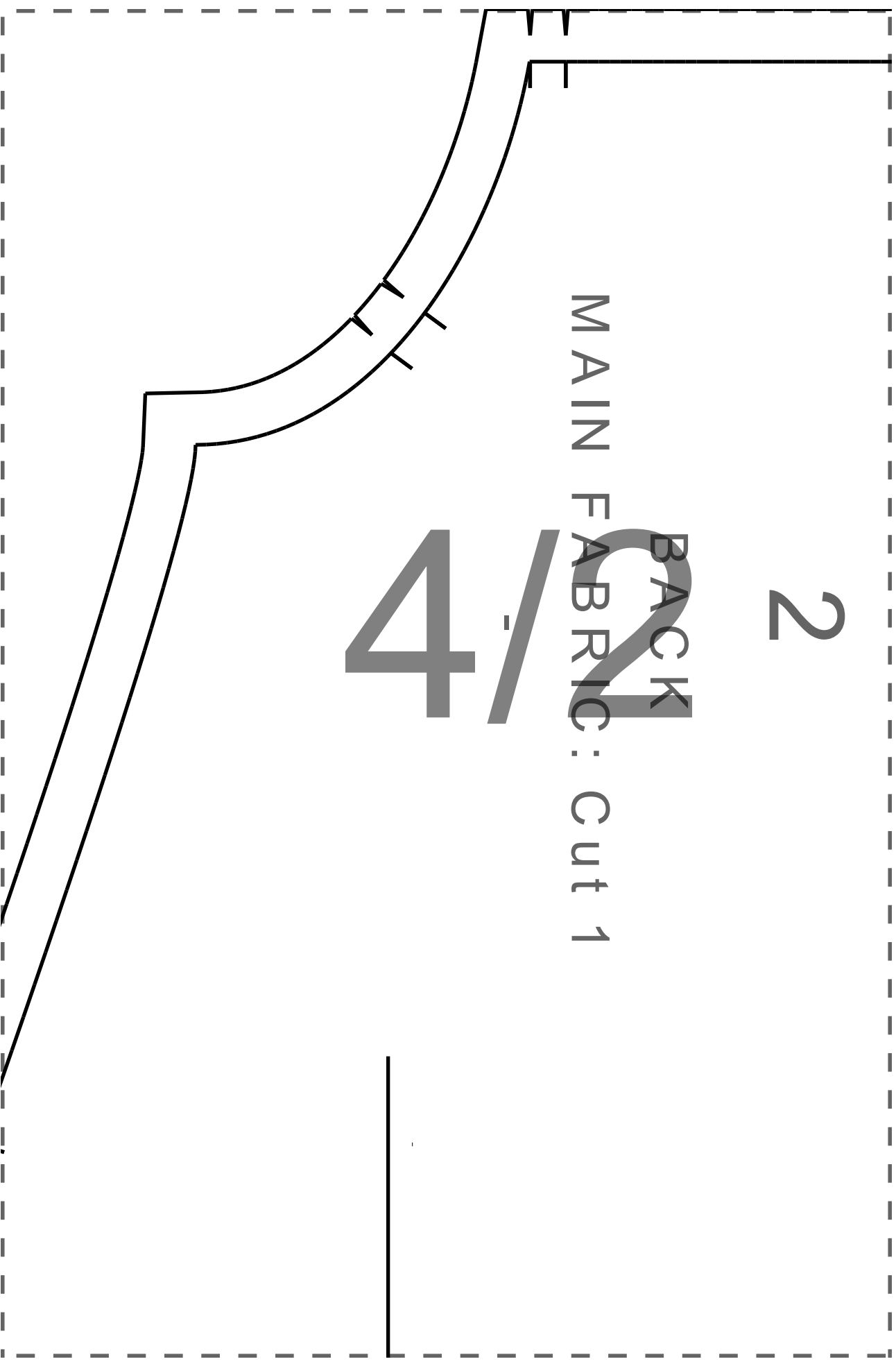


2

BACK

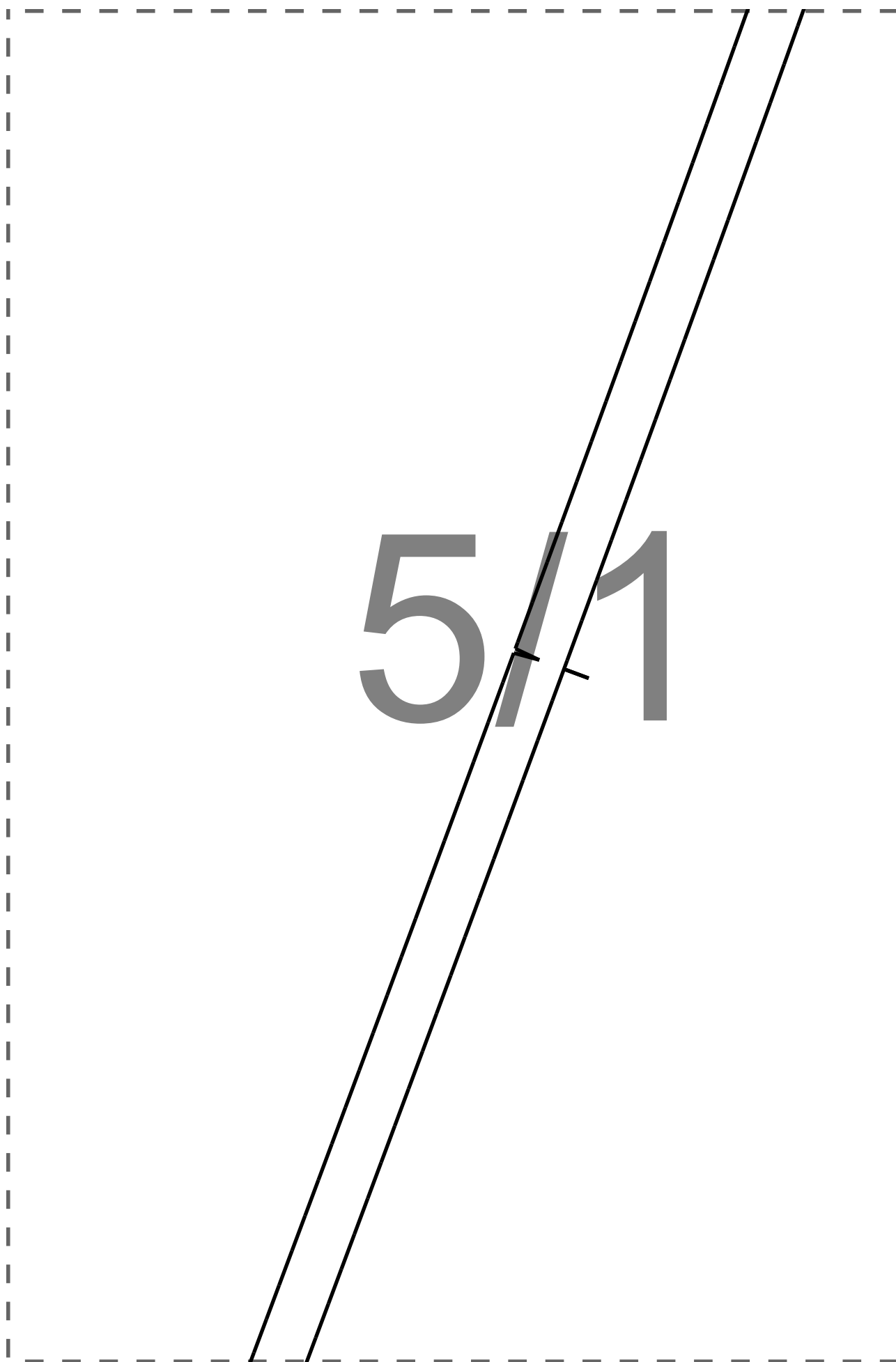
MAIN FABRIC : Cut 1

4 1/2





$4/3$

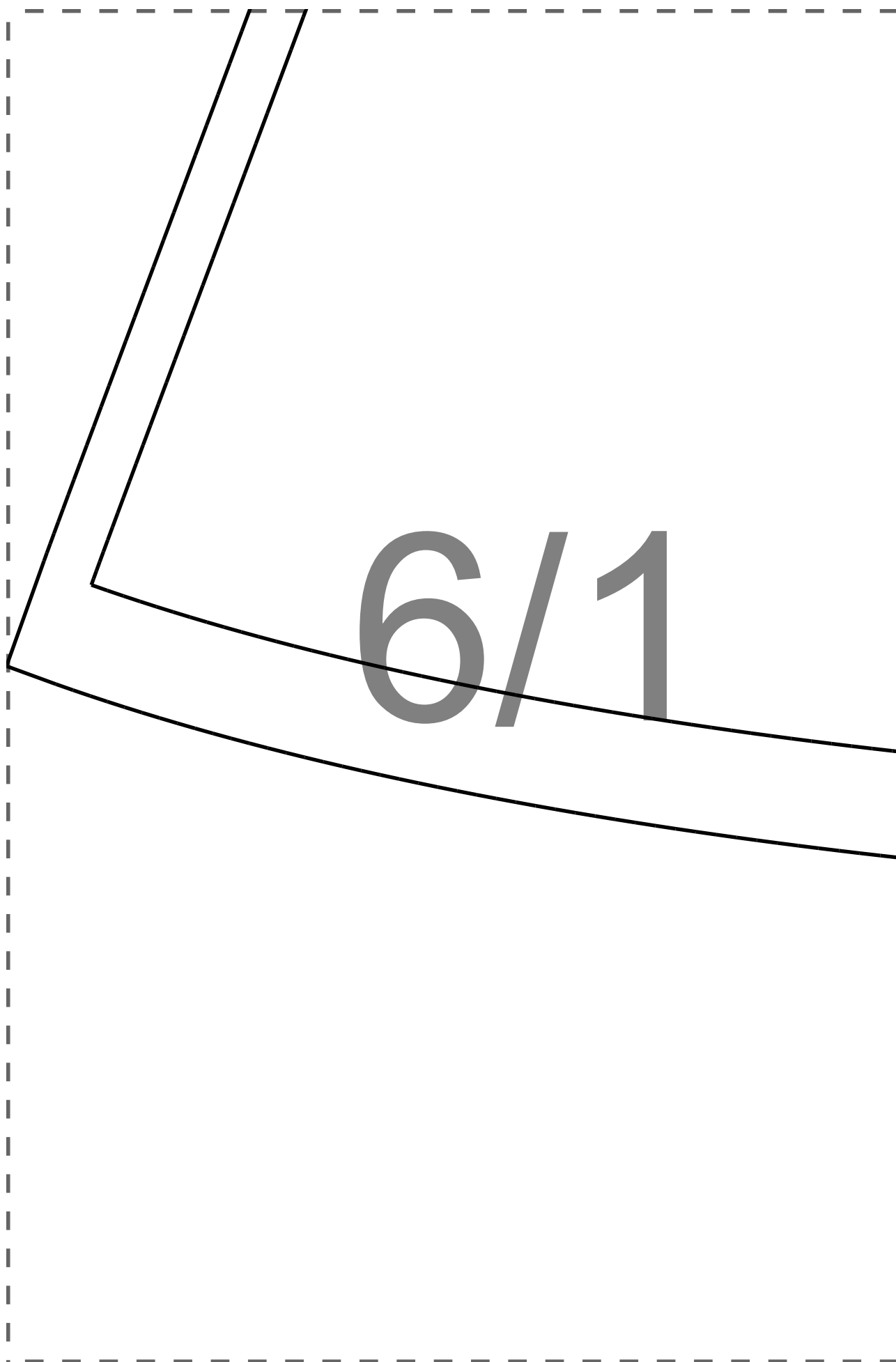




$5/2$

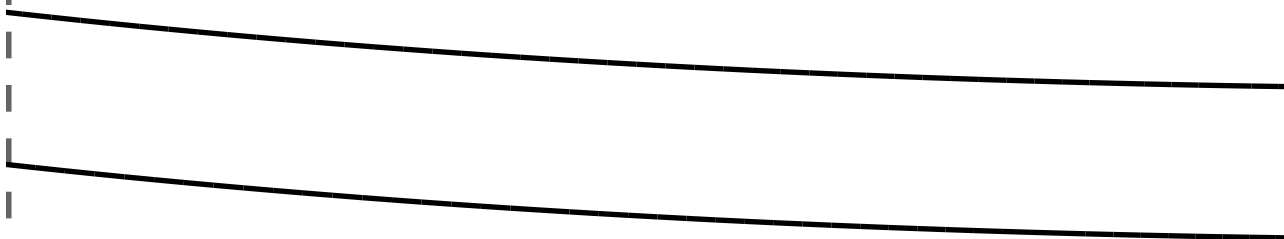
CUT ON FOLD

5/3





6/2



6/3