



Print this Calibration Test page first!

Size: Height: 107.00, Bust: 56.50, Waist: 52.10, Hips: 57.50
Pattern Name: -

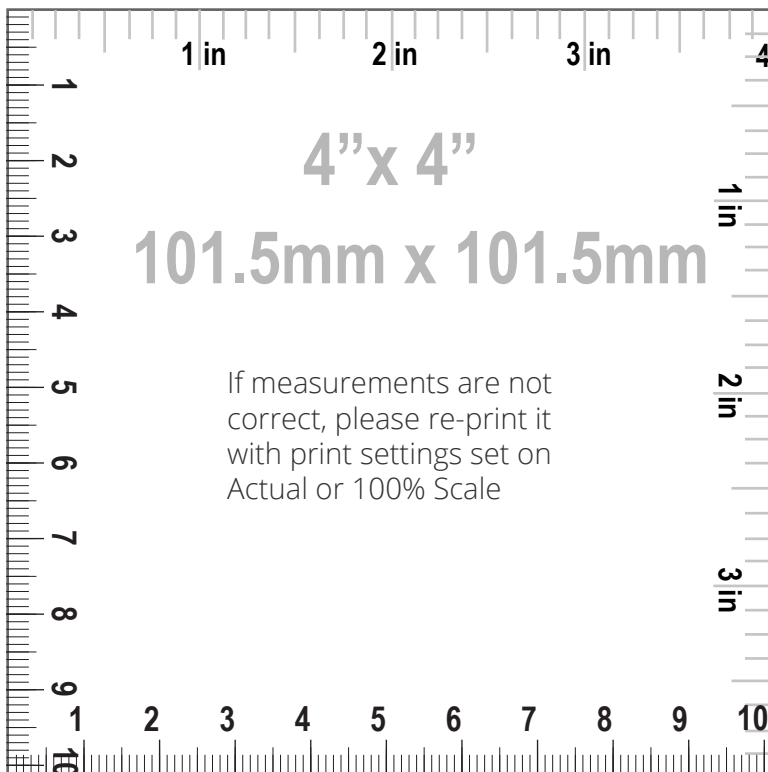
Notes

HOW TO PRINT



Printing

1. Once your Calibration Test Page has been printed, measure the 4"x 4" (10cm) scale box with a ruler. If the lengths match, you can confidently print your pattern. If the rulers do not match, set your print settings to 100% or Actual and retry.



Cutting

Your printouts will always have a dashed border to perfectly match your sheets. Cut off the right edge of each page. Be careful not to cut beyond the dashed mark, otherwise your patterns will not align accurately.



Taping

1. Group each sheet by the second number marked on each page i.e. in a group 1, there are: 1/1, 2/1, 3/1, 4/1, etc. In a group 2: 1/2, 2/2 etc.
2. Place page 1/1 on top of the page 2/1, overlapping the right side edge. Match corners and crosses and secure with a pin or tape. Then use a scotch tape to permanently attach the sheets together.



Pattern Name: -

Seam Allowance: 1.00 (0.39 in)

Pattern pieces:

- | | |
|---|--|
| 1, FRONT, MAIN FABRIC: Cut 1 | 6, BACK FACING, MAIN FABRIC: Cut 1, FUSIBLE INTERFACING: Cut 1 |
| 2, SKIRT FRONT, MAIN FABRIC: Cut 1 | 7, STRAP, MAIN FABRIC: Cut 2, FUSIBLE INTERFACING: Cut 2 |
| 3, BACK, MAIN FABRIC: Cut 1 | 8, FRONT RUFFLE, MAIN FABRIC: Cut 1 |
| 4, SKIRT BACK, MAIN FABRIC: Cut 1 | 9, BACK RUFFLE, MAIN FABRIC: Cut 1 |
| 5, FRONT FACING, MAIN FABRIC: Cut 1, FUSIBLE INTERFACING: Cut 1 | |

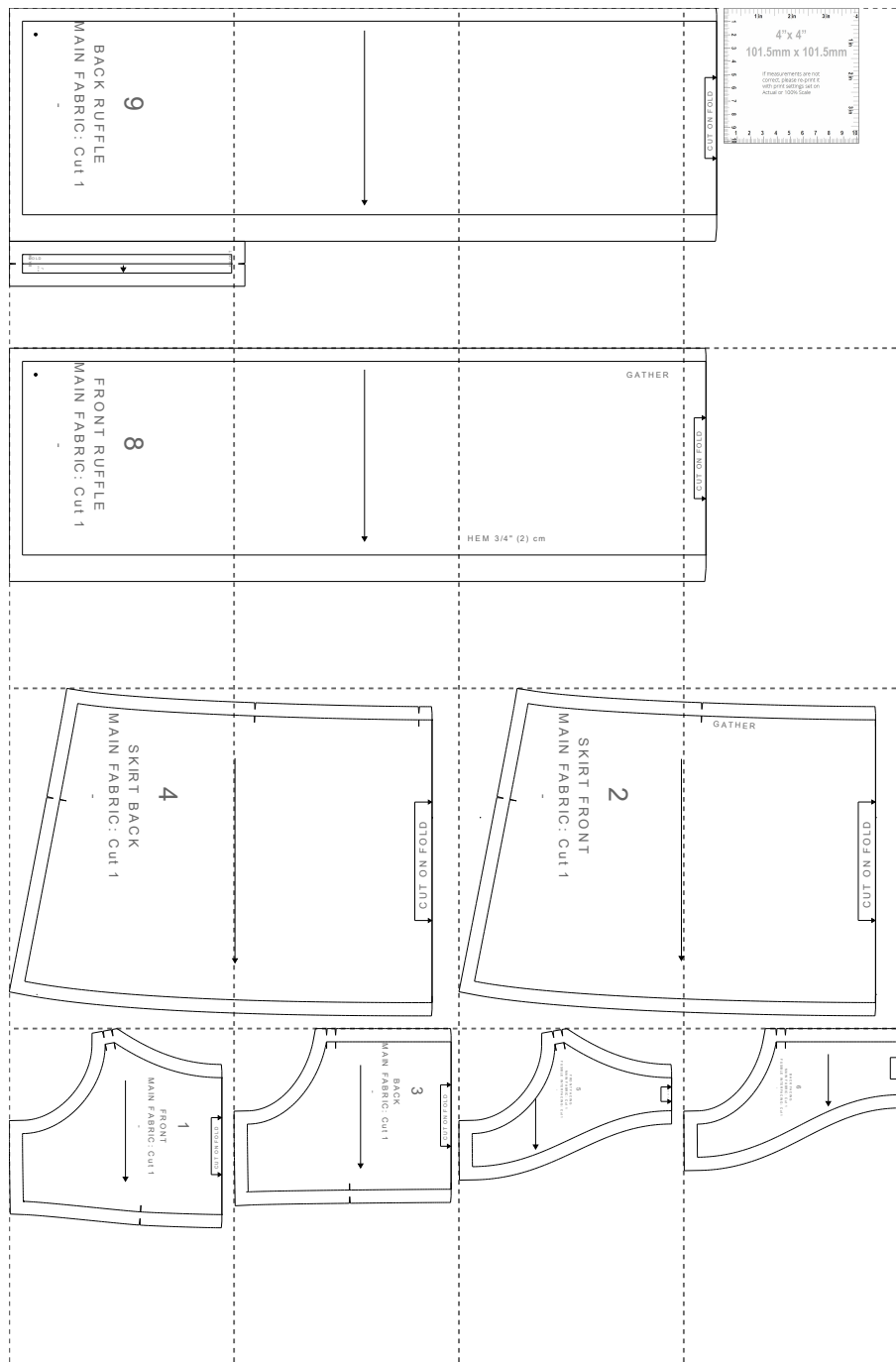
Pattern Specs (Circumferences are divided by 2):

- | | |
|--|---|
| 1. Underbust 30.38 (11.96 in) | 12. Skirt center back length from waist to hem 35.99 (14.17 in) |
| 2. Front length from HPS to waist 22.02 (8.67 in) | 13. Skirt side seam 21.37 (8.41 in) |
| 3. Across chest 30.47 (12.00 in) | 14. Low hips 60.72 (23.91 in) |
| 4. Center front length to waist 10.34 (4.07 in) | 15. Skirt hemline sweep 61.01 (24.02 in) |
| 5. Center back length to waist 11.14 (4.39 in) | 16. Ruffle length 103.71 (40.83 in) |
| 6. Across front 17.64 (6.94 in) | 17. Gather skirt 45.48 (17.91 in) |
| 7. Across back 18.84 (7.42 in) | 18. Gather ruffle 85.41 (33.63 in) |
| 8. Top side seam 5.12 (2.02 in) | 19. Skirt waist 30.38 (11.96 in) |
| 9. Front neck drop 11.68 (4.60 in) | 20. Strap width 0.70 (0.28 in) |
| 10. Back neck drop 9.97 (3.93 in) | 21. Strap length 15.81 (6.22 in) |
| 11. Skirt center front length from waist to hem 35.99 (14.17 in) | |



Paper Size: A4;

Print Actual Size (100% Scale);



9
1/1

BACK RUFFLE

MAIN FABRIC: Cut 1

-



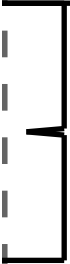
FRONT



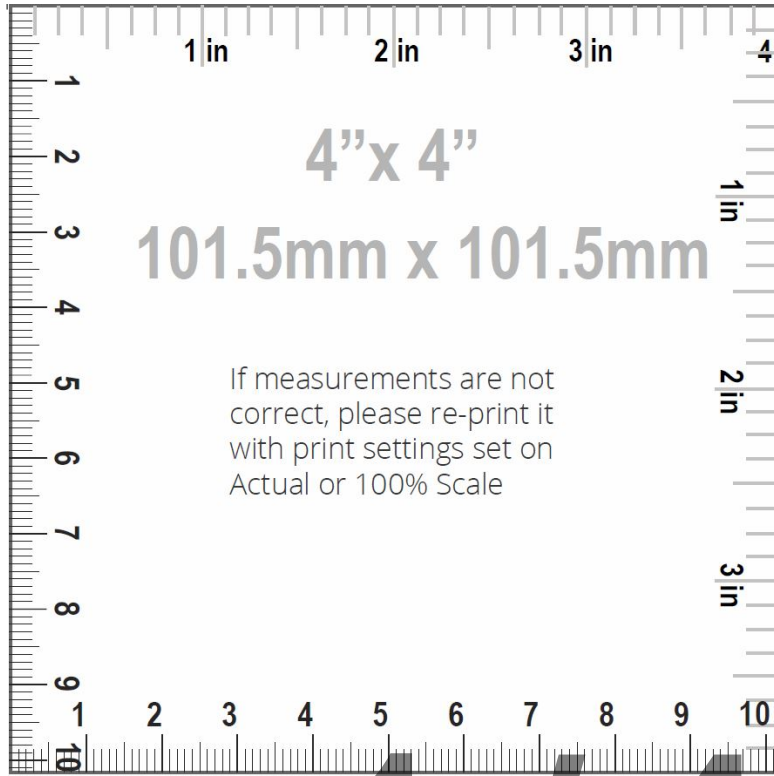
BACK
OLD

7
STRAP

1/2



1/3



1/4

8

2/1

FRONT RUFFLE

MAIN FABRIC: Cut 1

-



2/2



GATHER

2/3

HEM 3/4" (2) cm

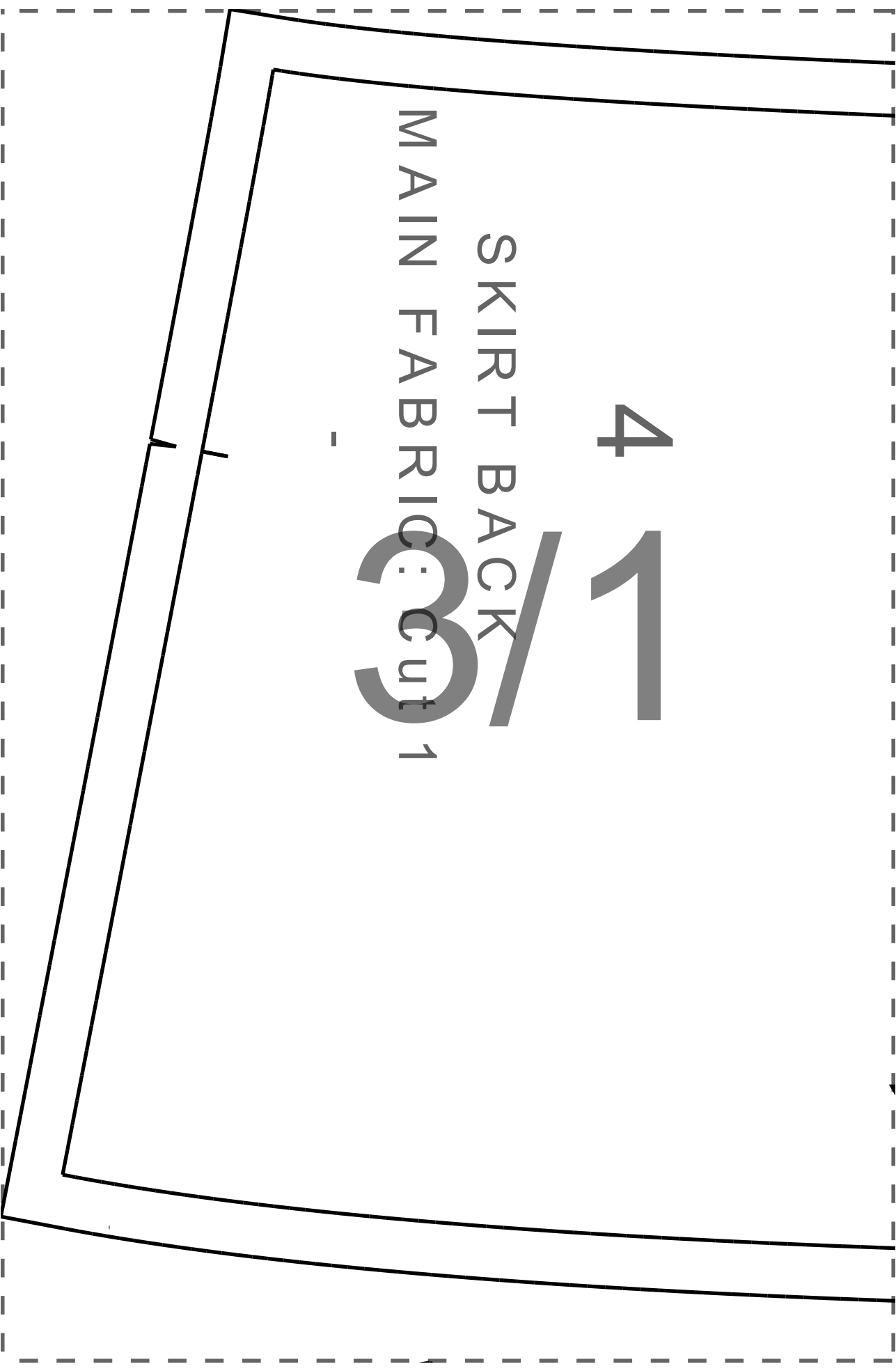
CUT ON FOLD

2/4

4 1

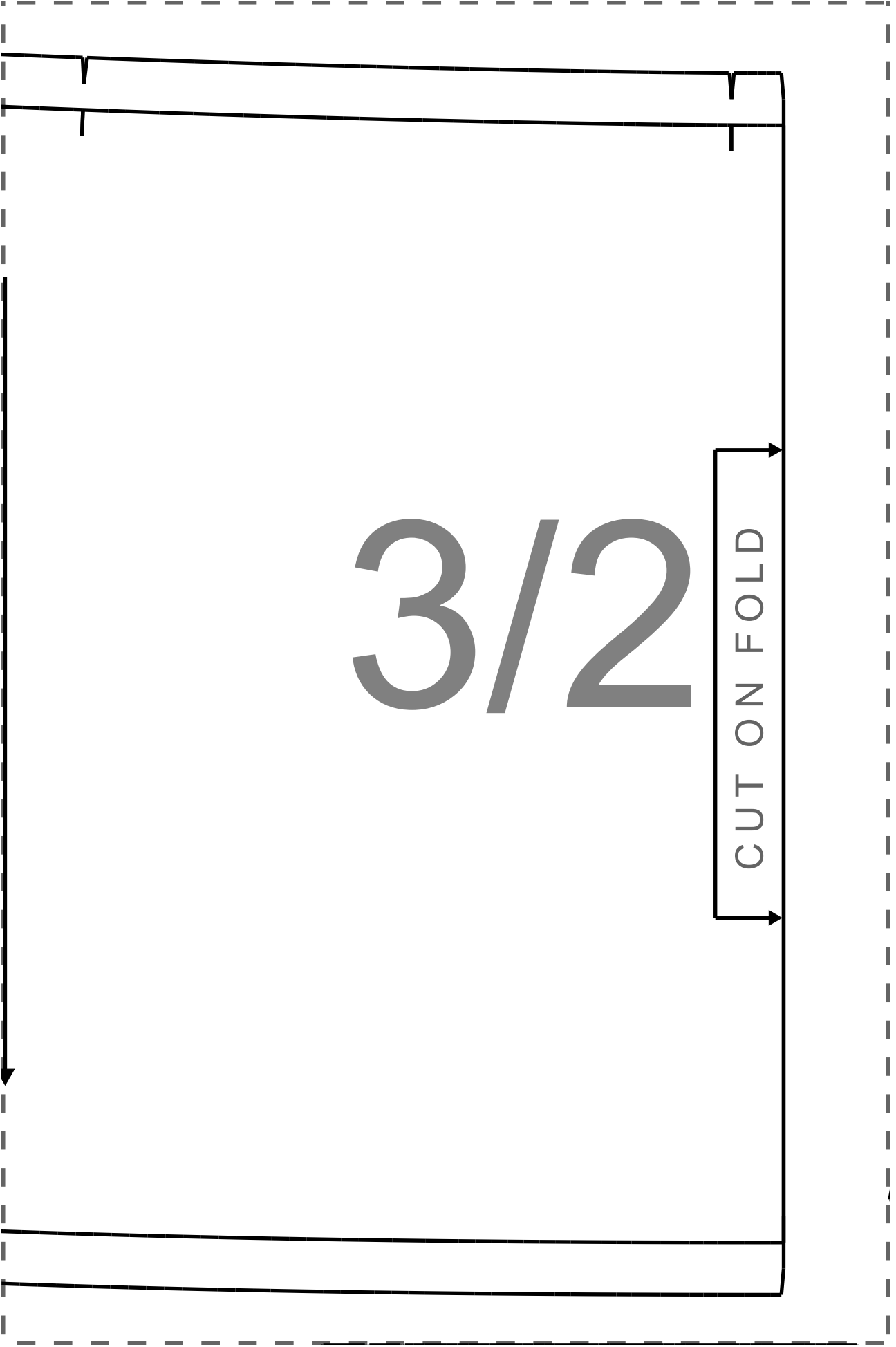
SKIRT BACK

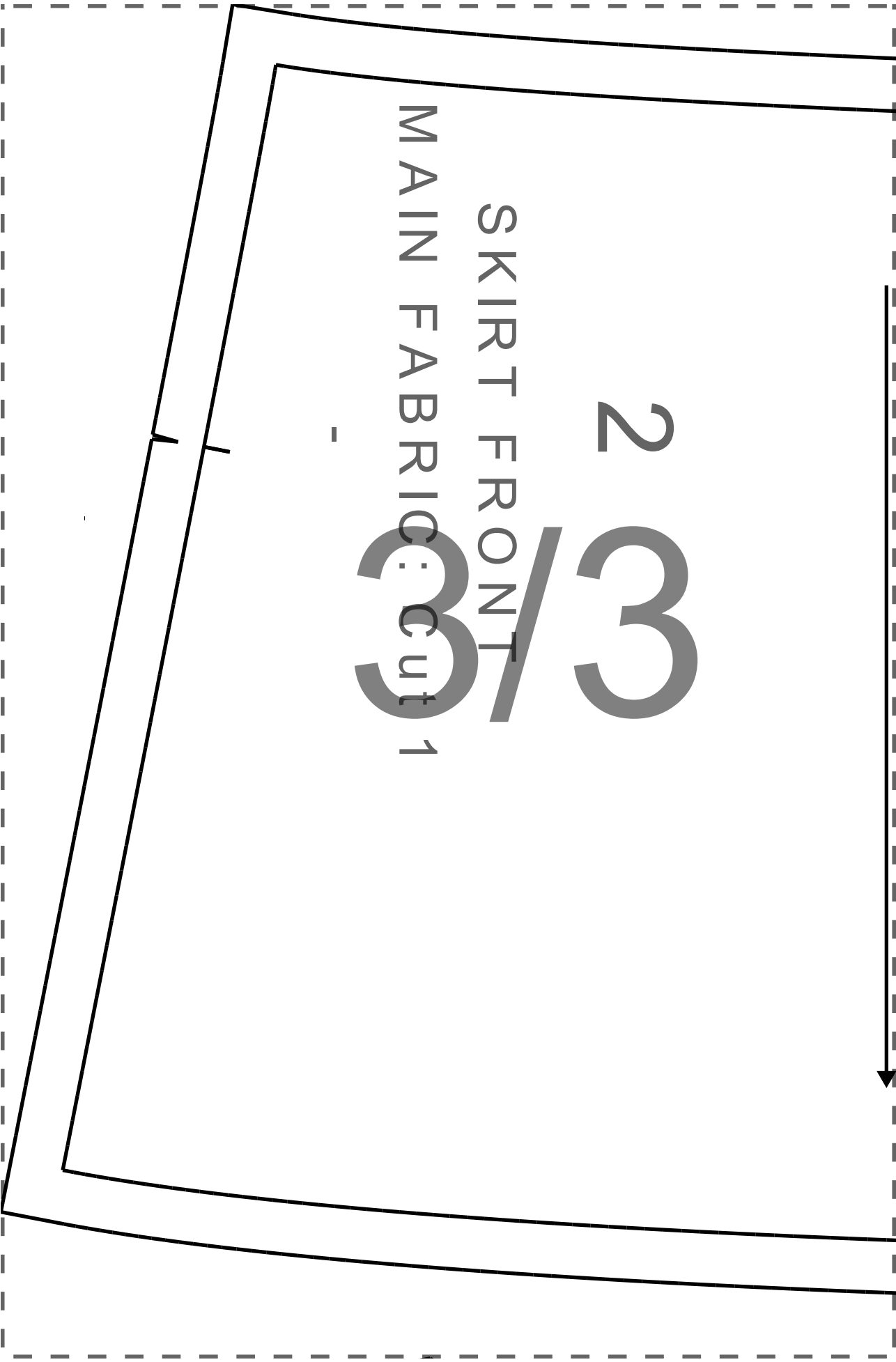
MAIN FABRIC: cut 1



3/2

CUT ON FOLD





2

3/3

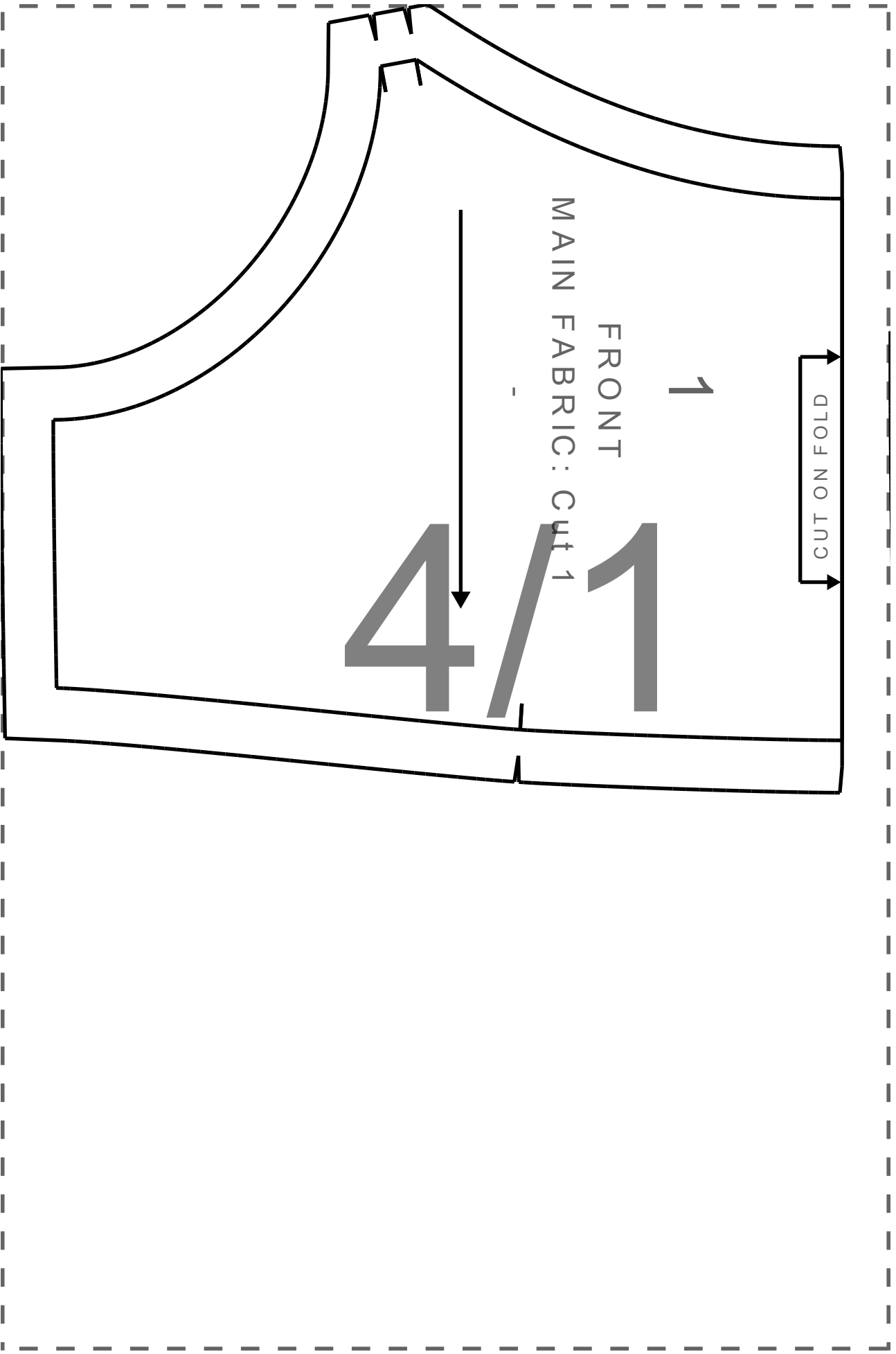
SKIRT FRONT

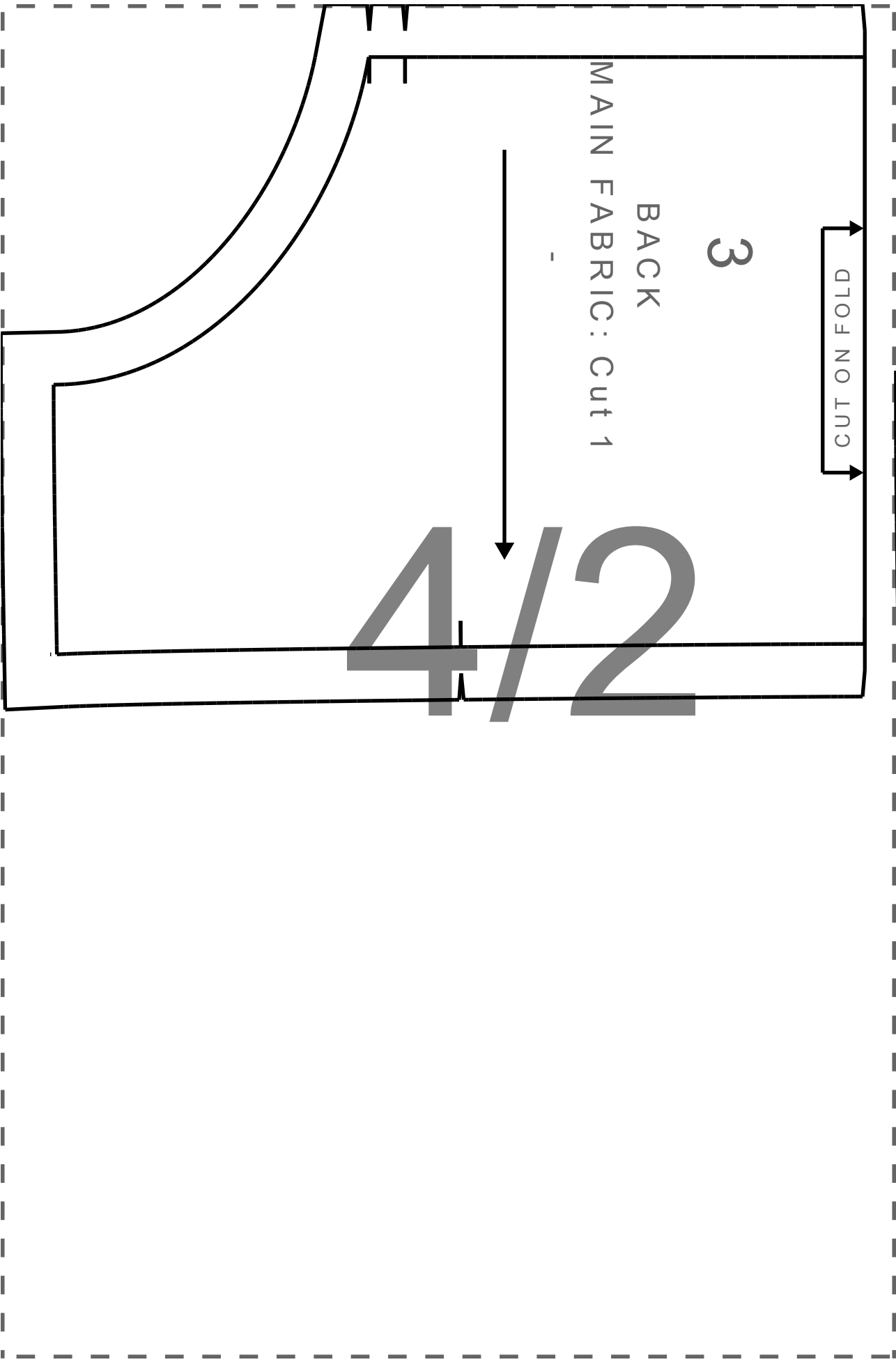
MAIN FABRIC: cut 1

GATHER

3/4

CUT ON FOLD





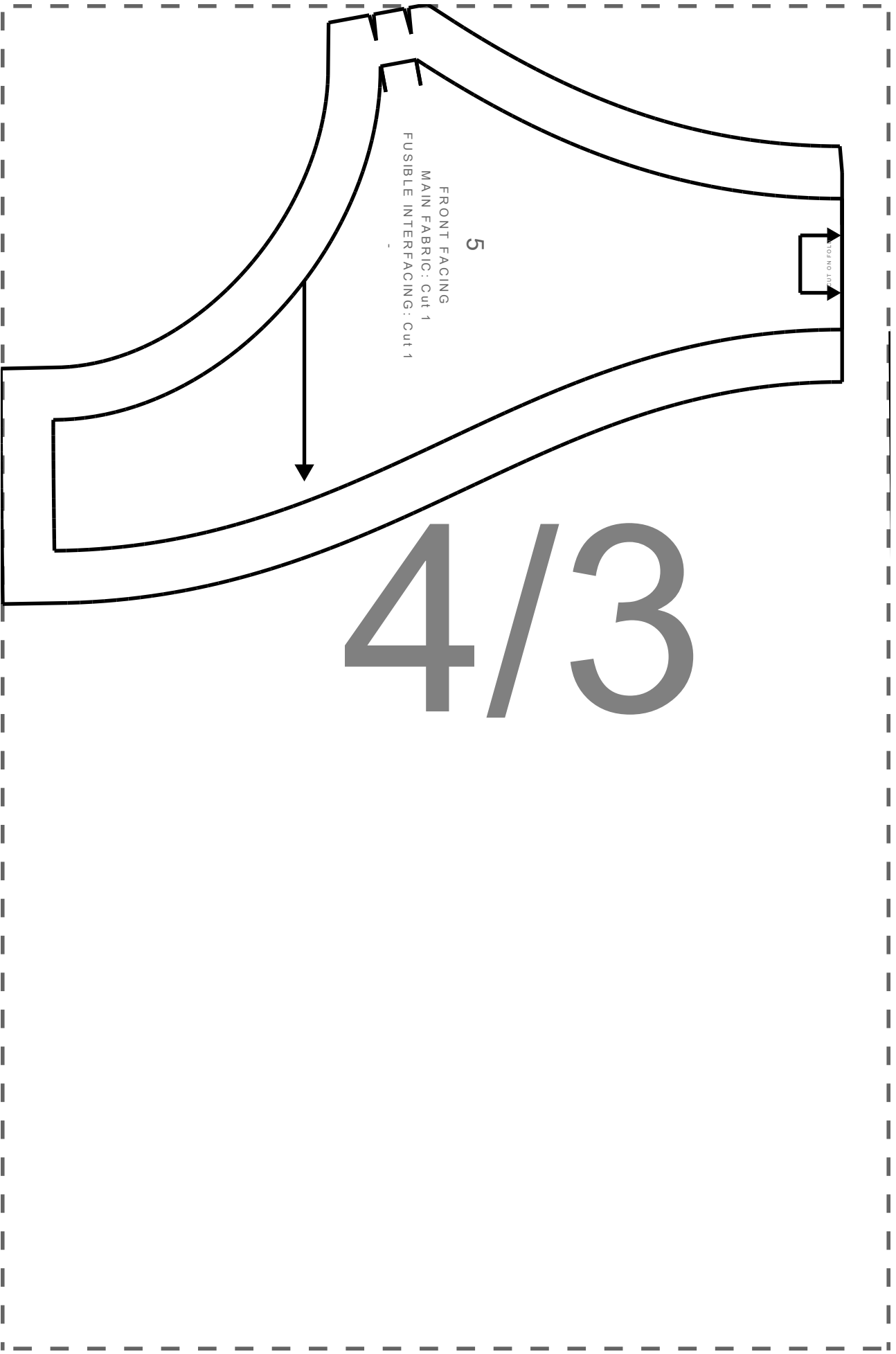
3

BACK

MAIN FABRIC: Cut 1

CUT ON FOLD

4 1/2



4/3

5

FRONT FACING
MAIN FABRIC: Cut 1
FUSIBLE INTERFACING: Cut 1

4/4

6

BACK FACING
MAIN FABRIC: Cut 1
FUSIBLE INTERFACING: Cut 1

