



Print this Calibration Test page first!

Size: Height: 127.00, Bust: 62.90, Waist: 58.40, Hips: 66.70
Pattern Name: -

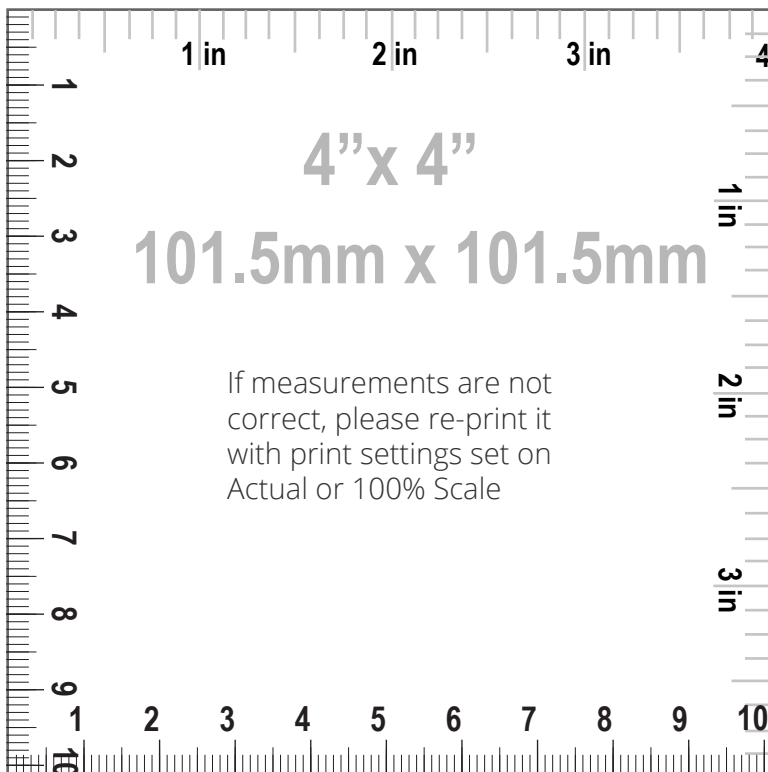
Notes

HOW TO PRINT



Printing

1. Once your Calibration Test Page has been printed, measure the 4"x 4" (10cm) scale box with a ruler. If the lengths match, you can confidently print your pattern. If the rulers do not match, set your print settings to 100% or Actual and retry.



Cutting

Your printouts will always have a dashed border to perfectly match your sheets. Cut off the right edge of each page. Be careful not to cut beyond the dashed mark, otherwise your patterns will not align accurately.



Taping

1. Group each sheet by the second number marked on each page i.e. in a group 1, there are: 1/1, 2/1, 3/1, 4/1, etc. In a group 2: 1/2, 2/2 etc.
2. Place page 1/1 on top of the page 2/1, overlapping the right side edge. Match corners and crosses and secure with a pin or tape. Then use a scotch tape to permanently attach the sheets together.



Pattern Name: -

Seam Allowance: 1.00 (0.39 in)

Pattern pieces:

- | | |
|---|---|
| 1, PANTS BACK, MAIN FABRIC: Cut 2 | 9, POCKET BAG BIG LEFT LINING, LINING: Cut 1 |
| 2, WAISTBAND, MAIN FABRIC: Cut 1 | 10, PANTS FRONT LEFT, MAIN FABRIC: Cut 1 |
| 3, POCKET FACING, MAIN FABRIC: Cut 2 | 11, FLY, MAIN FABRIC: Cut 1 |
| 4, FLY FACING, MAIN FABRIC: Cut 1 | 12, FLY INTERFACING, FUSIBLE INTERFACING: Cut 1 |
| 5, PANTS FRONT RIGHT, MAIN FABRIC: Cut 1 | 13, LOOP, MAIN FABRIC: Cut 1 |
| 6, COIN POCKET, MAIN FABRIC: Cut 1 | 14, FUSIBLE INTERFACING FOR WAISTBAND, FUSIBLE INTERFACING: Cut 2 |
| 7, POCKET BAG SMALL LINING, LINING: Cut 2 | |
| 8, POCKET BAG BIG RIGHT LINING, LINING: Cut 1 | |

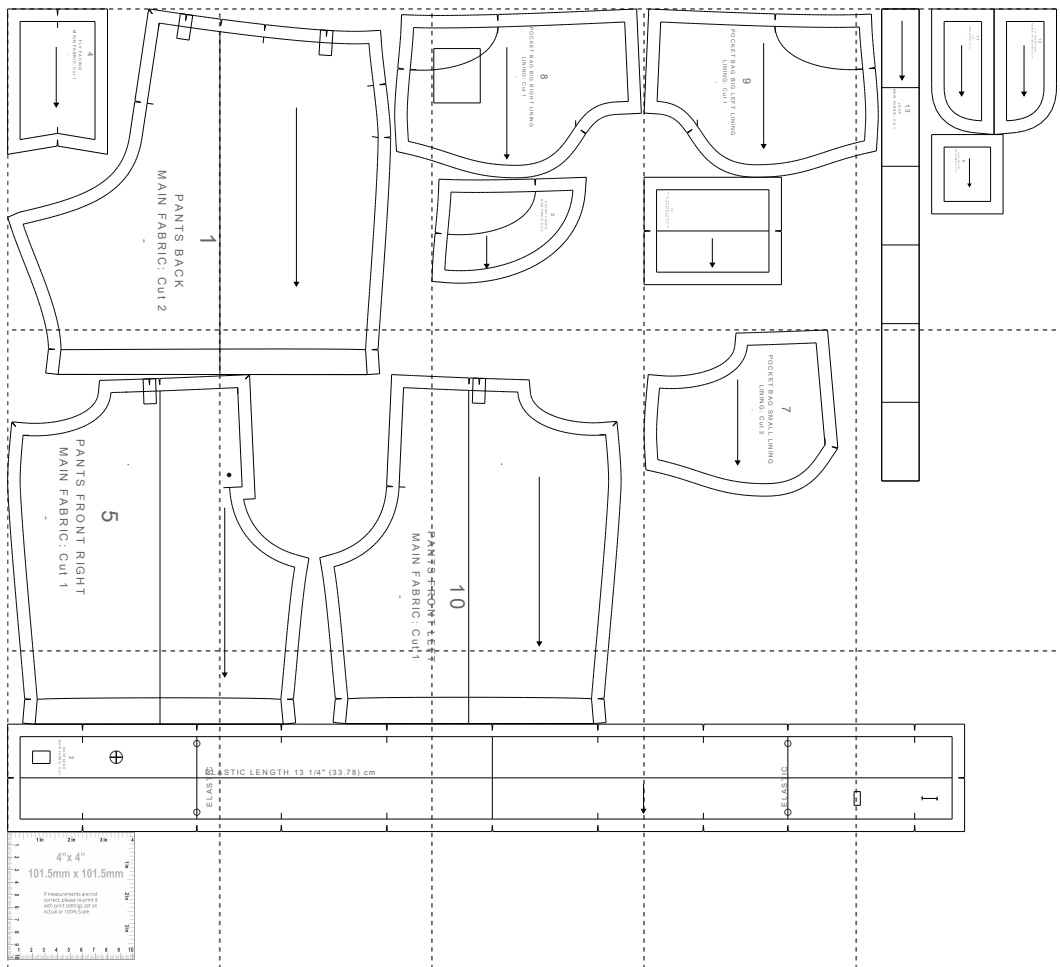
Pattern Specs (Circumferences are divided by 2):

- | | |
|--|--|
| 1. Waistband partly elastic width 3.00 (1.18 in) | 13. Crotch height 19.37 (7.63 in) |
| 2. Waistband width 3.30 (1.30 in) | 14. Inseam length 10.63 (4.19 in) |
| 3. Pocket bag height 11.12 (4.38 in) | 15. Pants side seam length 28.77 (11.33 in) |
| 4. Pocket side seam 3.38 (1.33 in) | 16. Fly zipper length 7.96 (3.13 in) |
| 5. Pocket waist seam 6.77 (2.67 in) | 17. Pocket bag height 11.01 (4.33 in) |
| 6. Waist 59.40 (23.39 in) | 18. Waistband length 65.64 (25.84 in) |
| 7. Low hips 71.37 (28.10 in) | 19. Waistband partly elastic length 33.78 (13.30 in) |
| 8. Thigh 49.74 (19.58 in) | 20. Waistband button diameter 1.00 (0.39 in) |
| 9. Knee 40.32 (15.87 in) | 21. Waistband buttons quantity 1.00 (0.39 in) |
| 10. Bottom opening 43.90 (17.28 in) | 22. Hook quantity 1.00 (0.39 in) |
| 11. Front rise 16.83 (6.63 in) | 23. Eye quantity 1.00 (0.39 in) |
| 12. Back rise 21.96 (8.65 in) | |



Paper Size: A4;

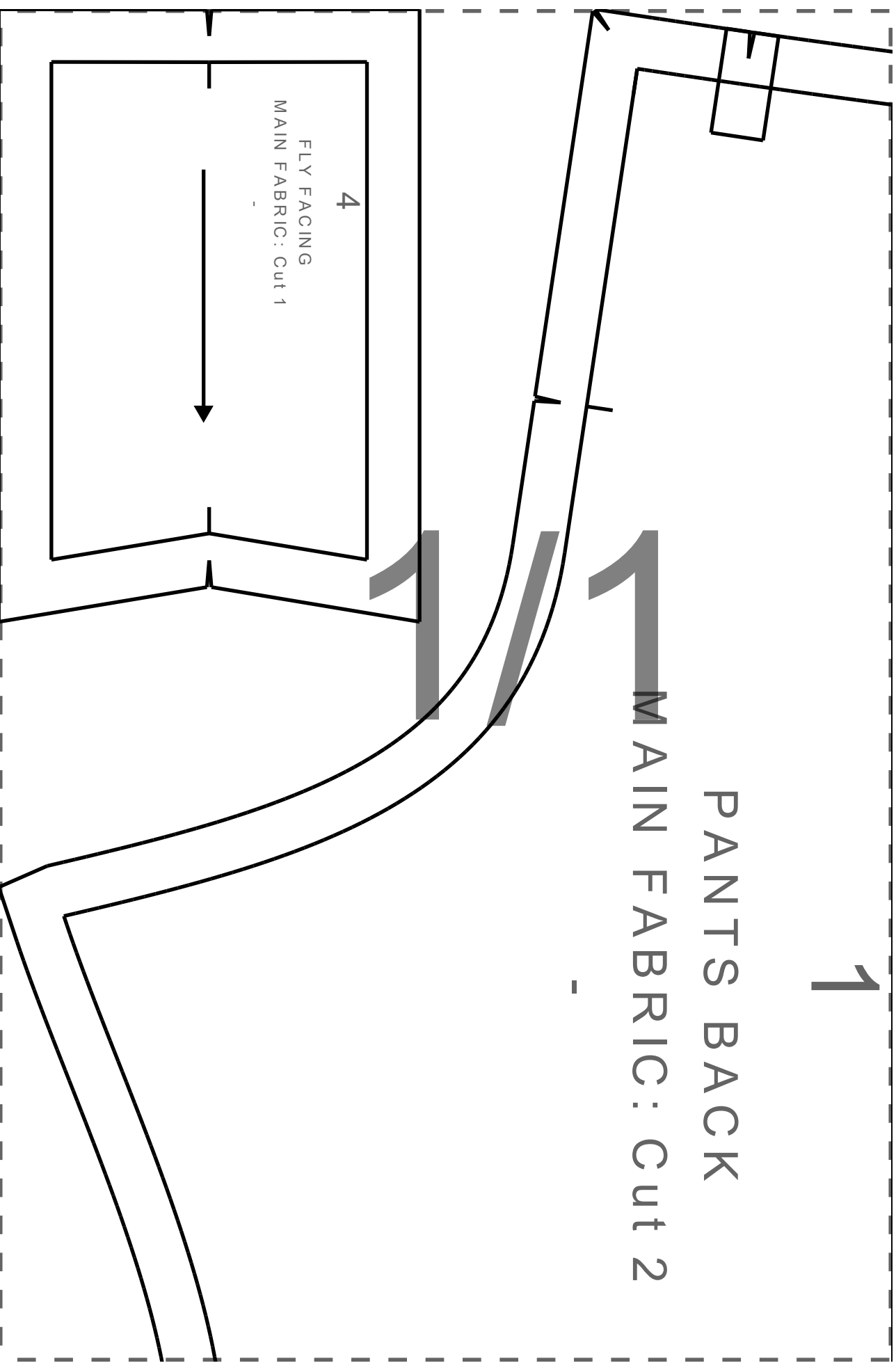
Print Actual Size (100% Scale);

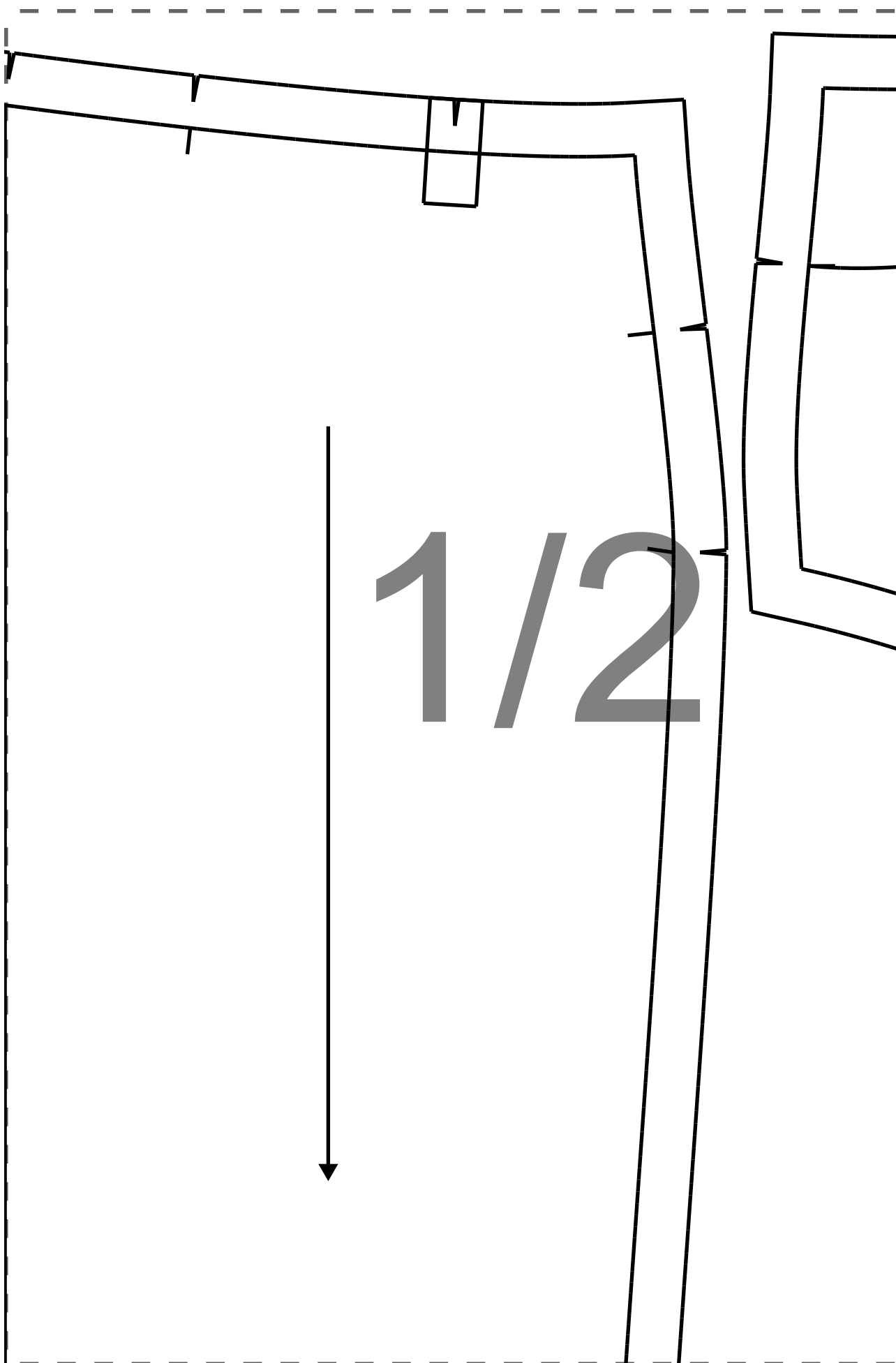


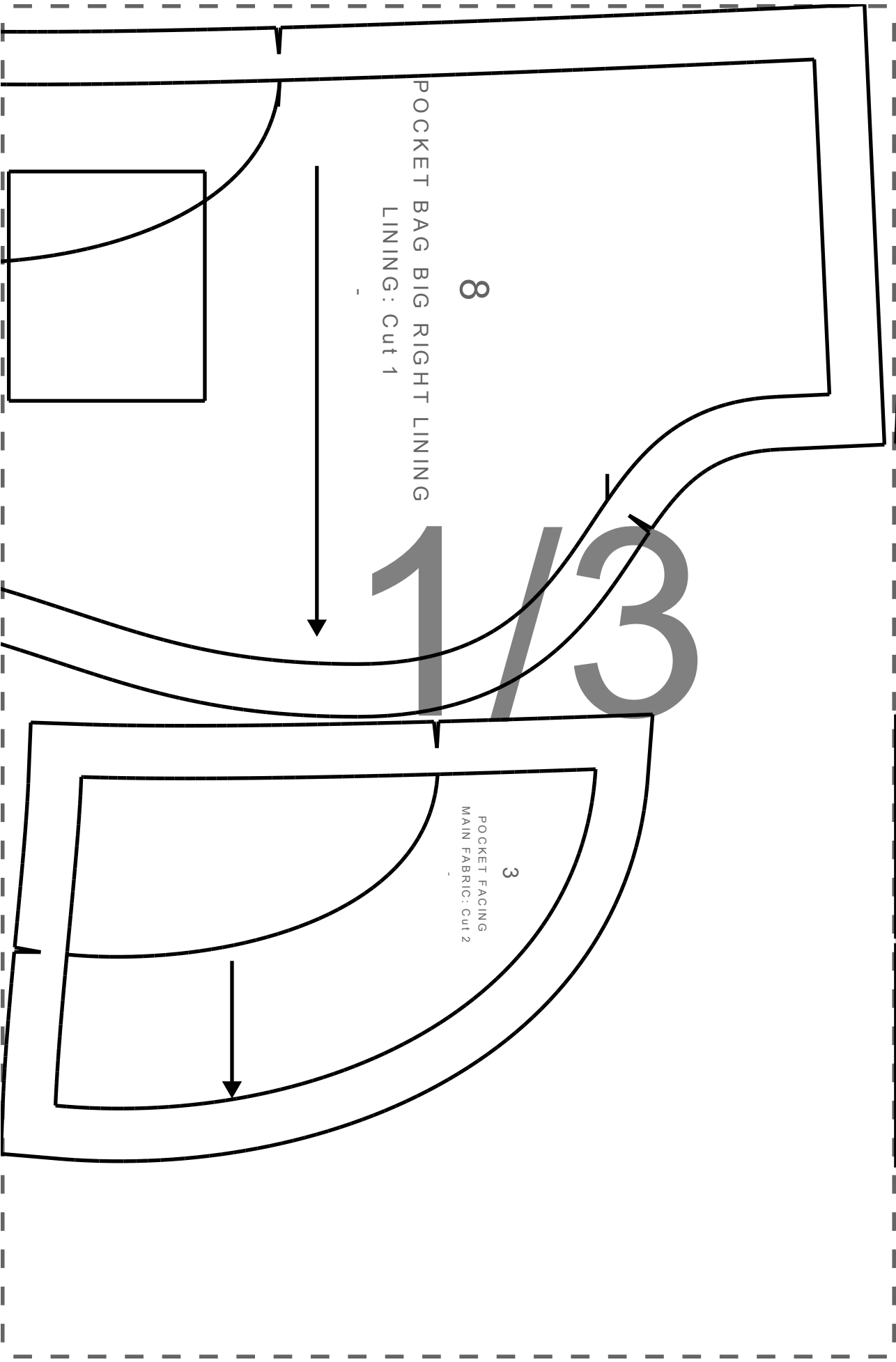
1

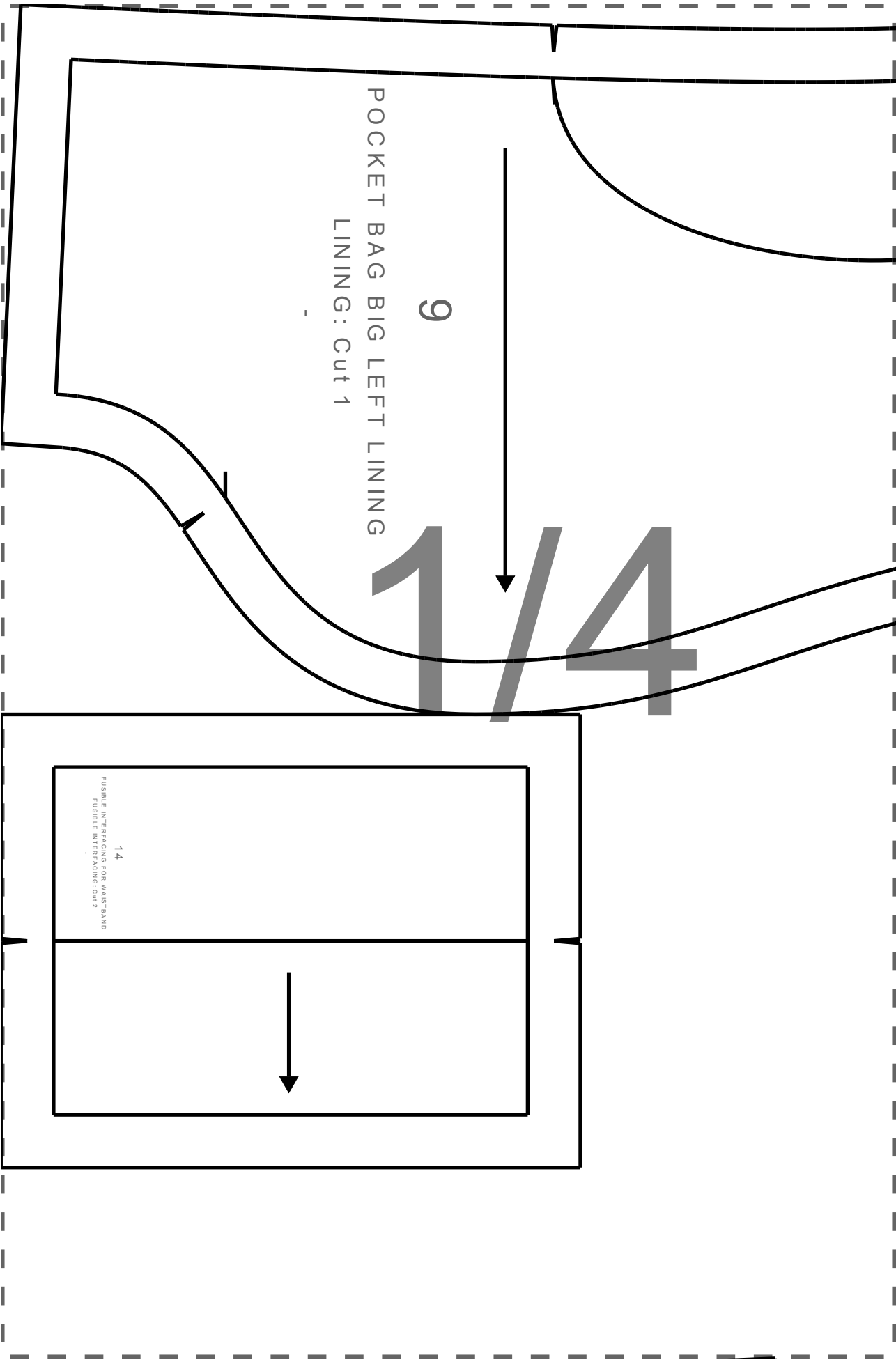
PANTS BACK

MAIN FABRIC: Cut 2









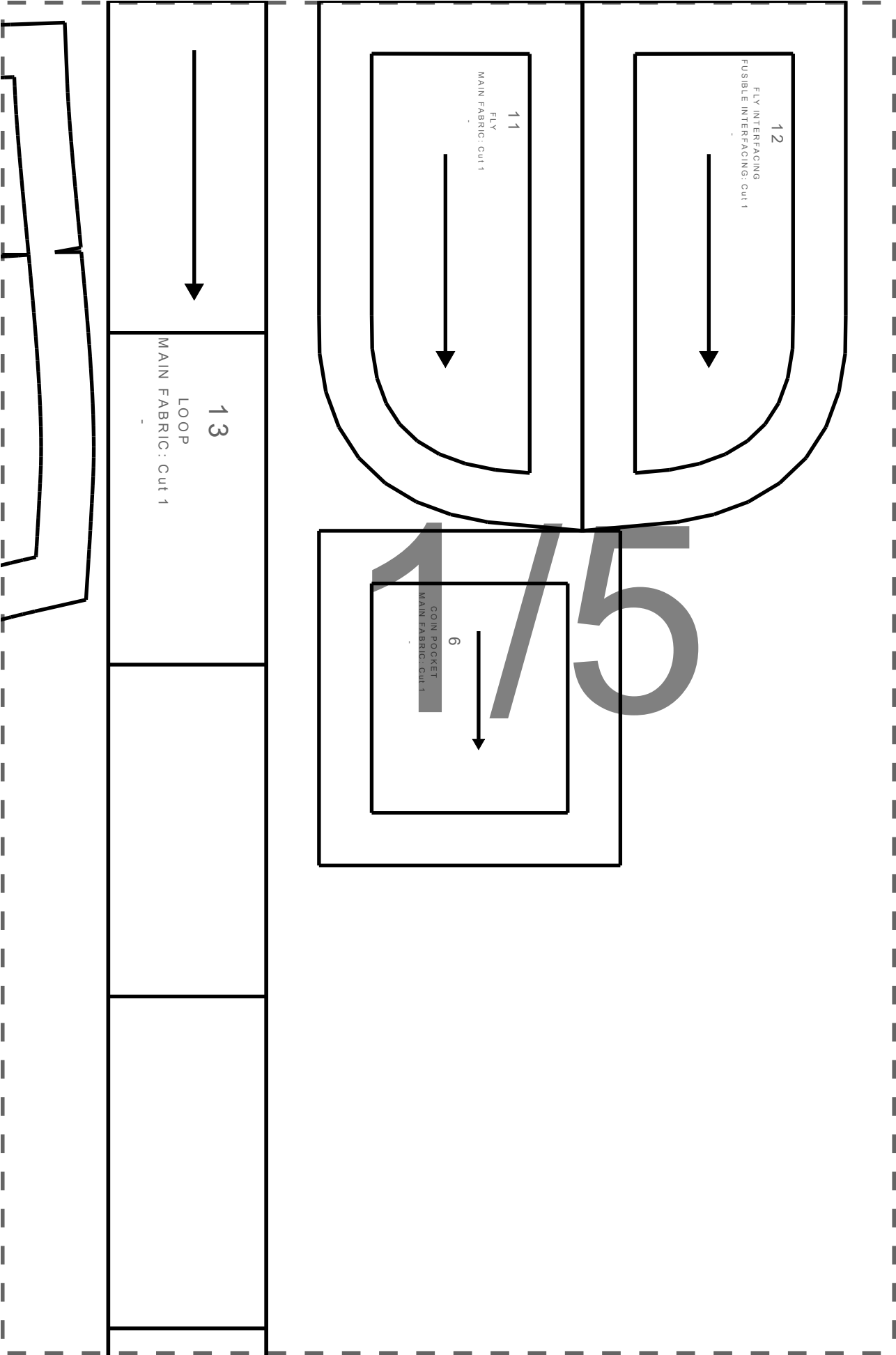
9

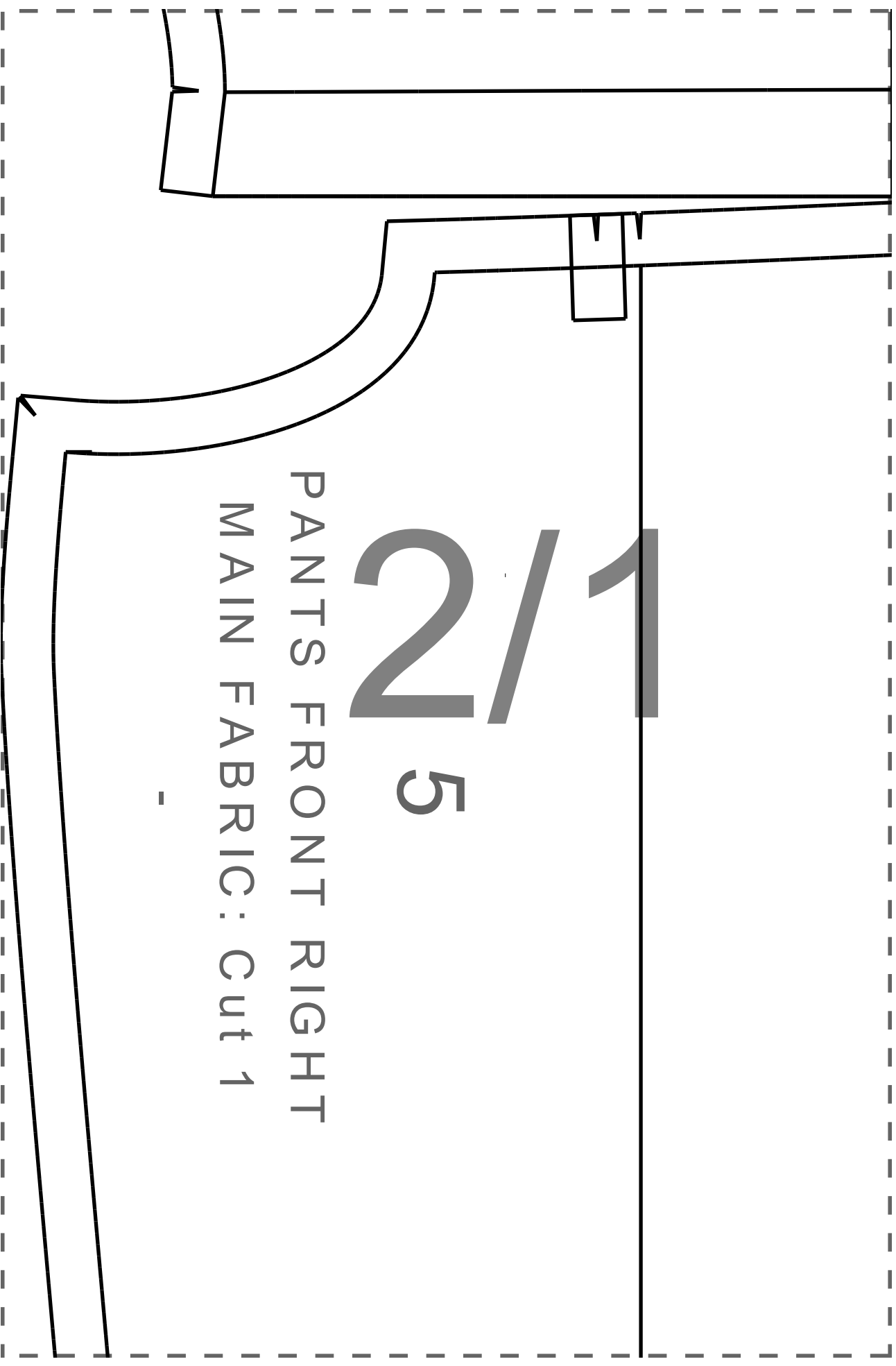
POCKET BAG BIG LEFT LINING
LINING: Cut 1

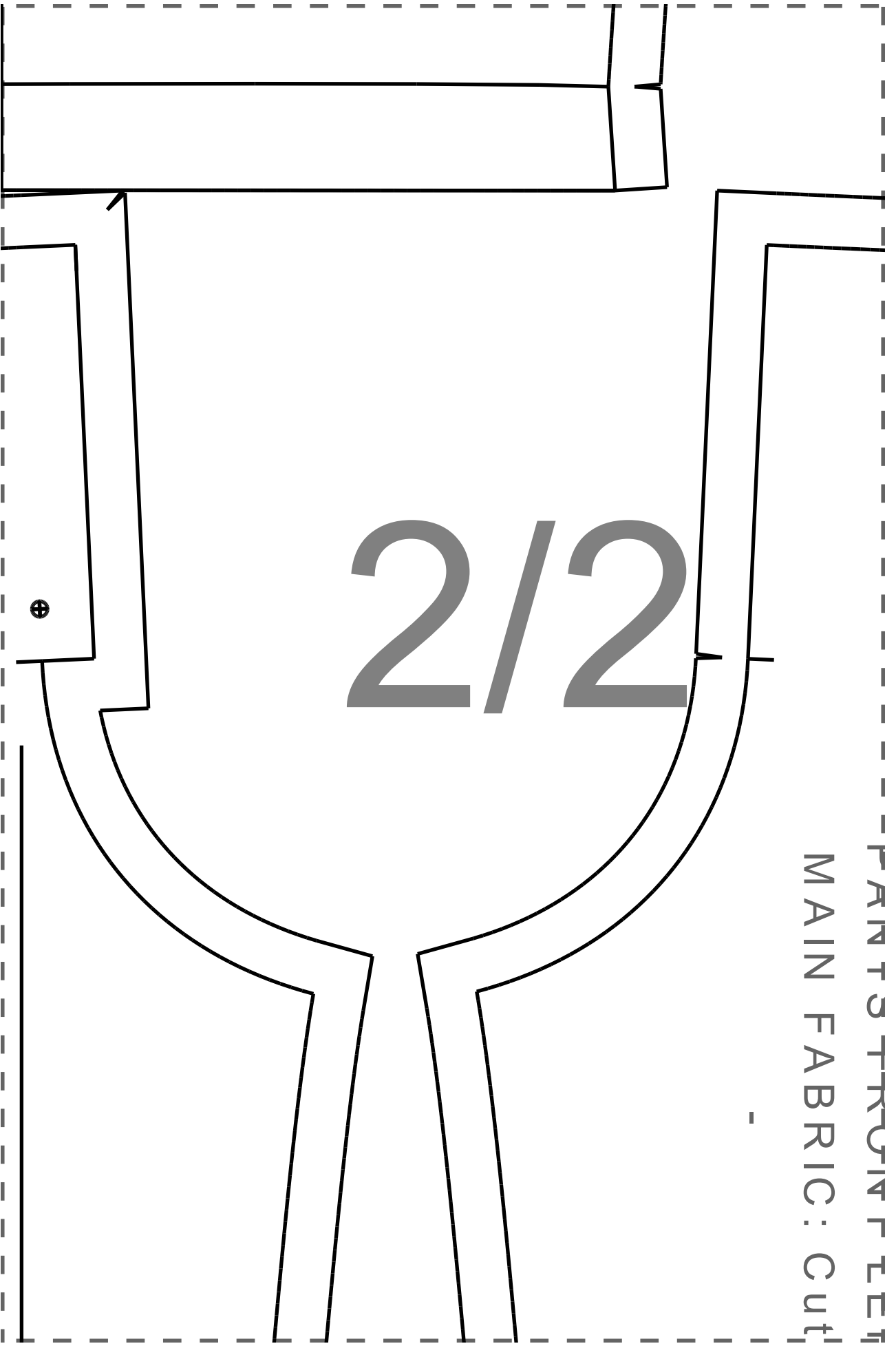
1/4

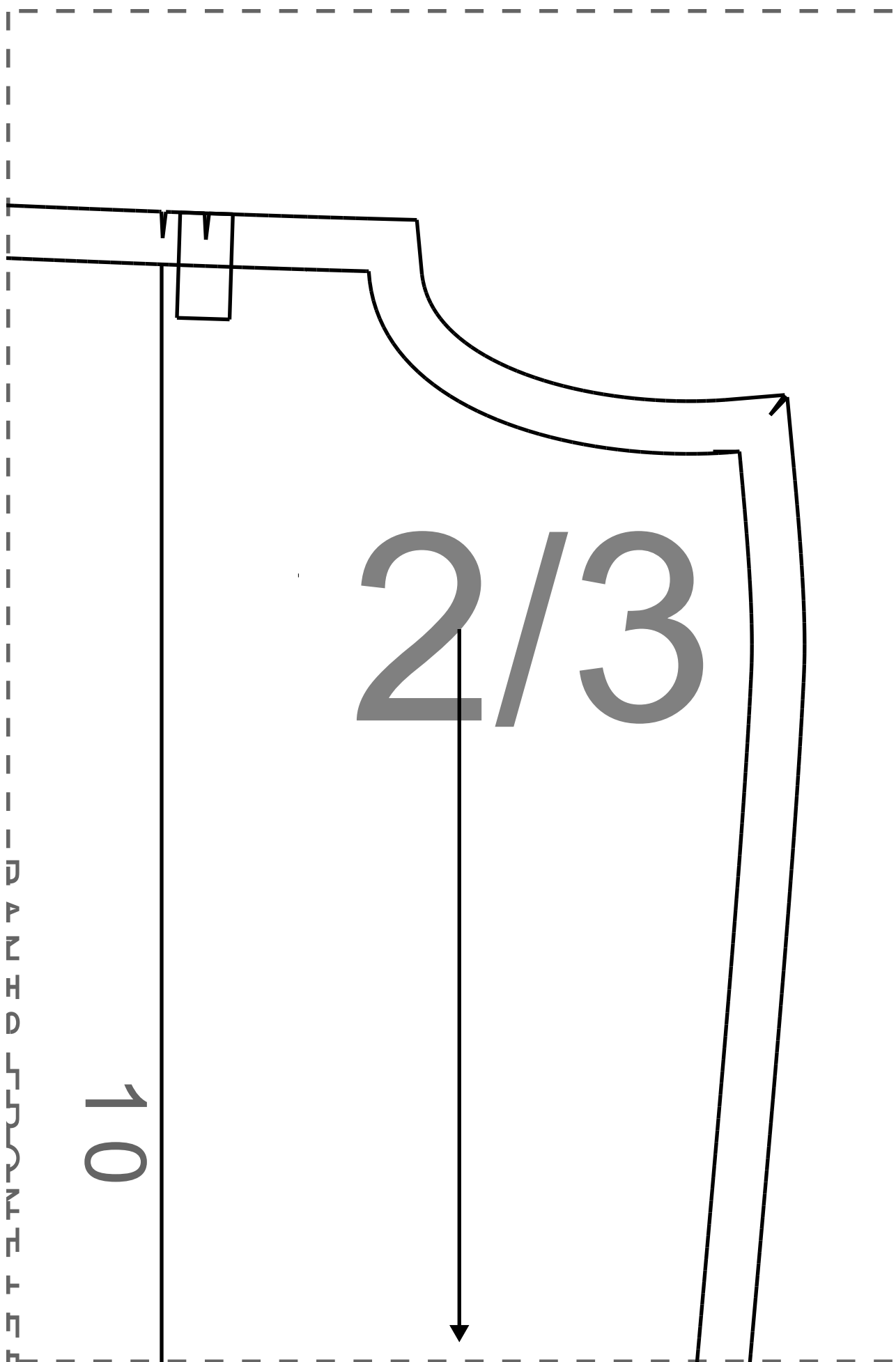
14

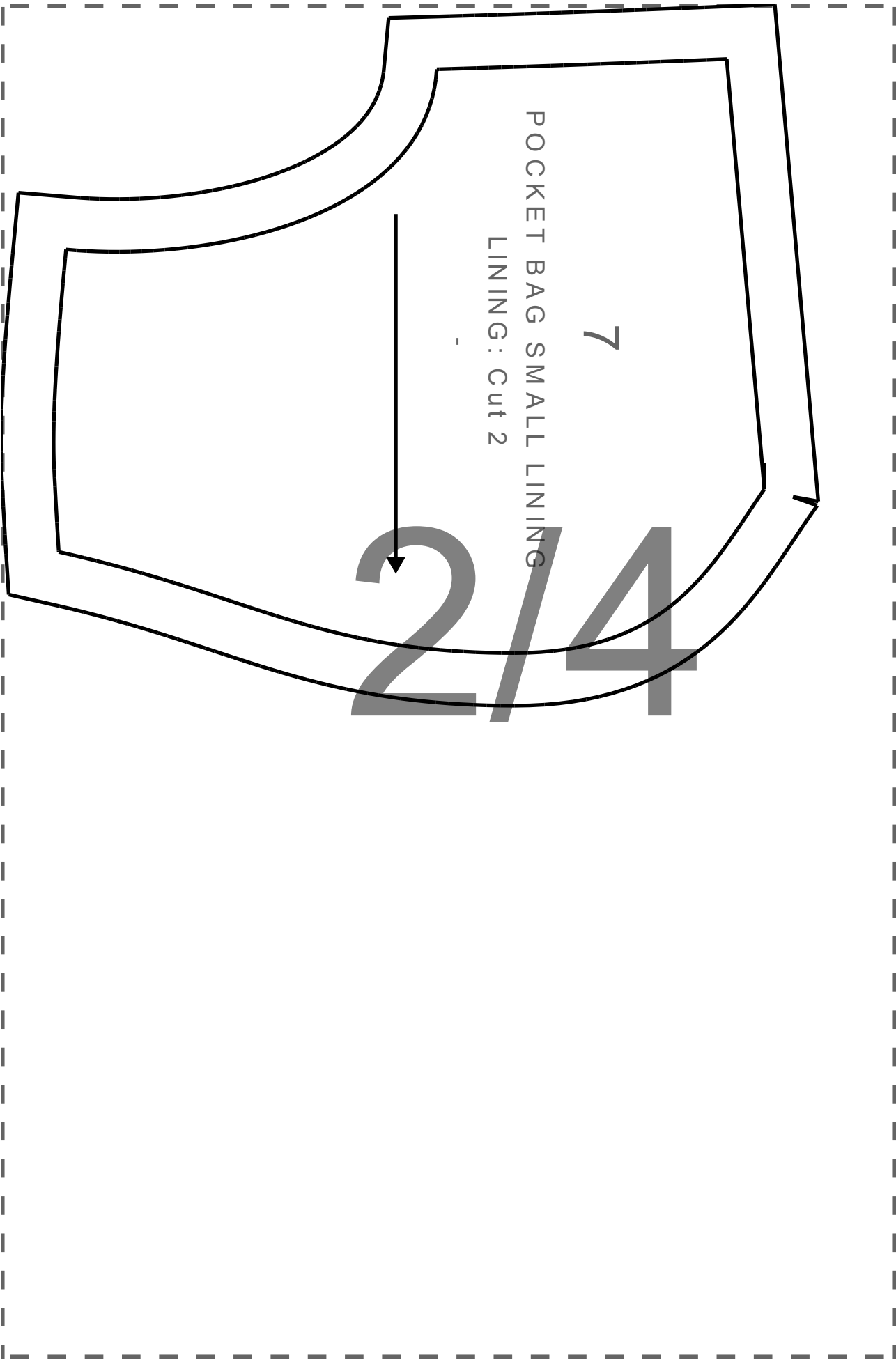
FUSIBLE INTERFACING FOR WAISTBAND
FUSIBLE INTERFACING CUT 2







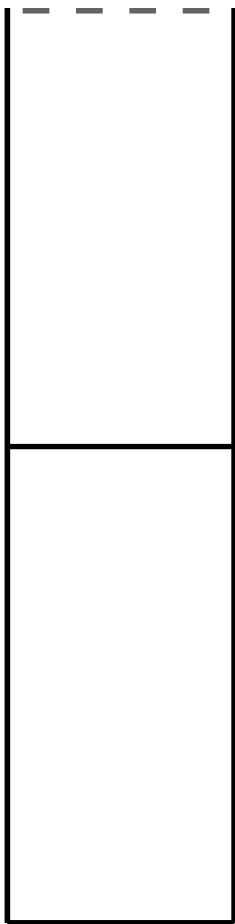




POCKET BAG SMALL LINING
LINING: Cut 2

7

2/4



2/5

