



# Print this Calibration Test page first!

Size: Height: 170.00, Bust: 90.00, Waist: 68.50, Hips: 95.00  
Pattern Name: - Tamanho 42

## Notes

---

---

---

---

---

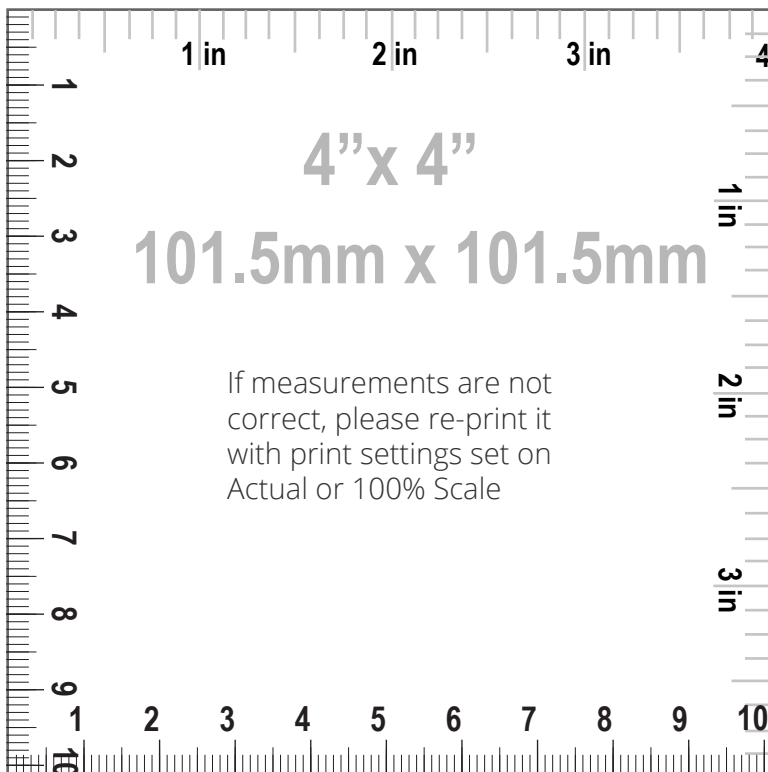
---

## HOW TO PRINT



### Printing

1. Once your Calibration Test Page has been printed, measure the 4"x 4" (10cm) scale box with a ruler. If the lengths match, you can confidently print your pattern. If the rulers do not match, set your print settings to 100% or Actual and retry.



### Cutting

Your printouts will always have a dashed border to perfectly match your sheets. Cut off the right edge of each page. Be careful not to cut beyond the dashed mark, otherwise your patterns will not align accurately.



### Taping

1. Group each sheet by the second number marked on each page i.e. in a group 1, there are: 1/1, 2/1, 3/1, 4/1, etc. In a group 2: 1/2, 2/2 etc.  
2. Place page 1/1 on top of the page 2/1, overlapping the right side edge. Match corners and crosses and secure with a pin or tape. Then use a scotch tape to permanently attach the sheets together.



Pattern Name: - Tamanho 42

Seam Allowance: 1.00 (0.39 in)

Pattern pieces:

1, SKIRT FRONT, MAIN FABRIC: Cut 1

2, SKIRT BACK, MAIN FABRIC: Cut 2

3, WAISTBAND, MAIN FABRIC: Cut 1, FUSIBLE  
INTERFACING: Cut 1

Pattern Specs (Circumferences are divided by 2):

1. Skirt back invisible zipper length 18.00 (7.09 in)

2. Center front length from waist to hem 65.32 (25.72  
in)

3. Center back length from waist to hem 66.32 (26.11  
in)

4. Skirt side seam 66.63 (26.23 in)

5. Low hips 48.94 (19.27 in)

6. Hemline sweep 43.96 (17.31 in)

7. Waist 35.00 (13.78 in)

8. Waistband length 69.99 (27.56 in)

9. Waistband width 5.00 (1.97 in)

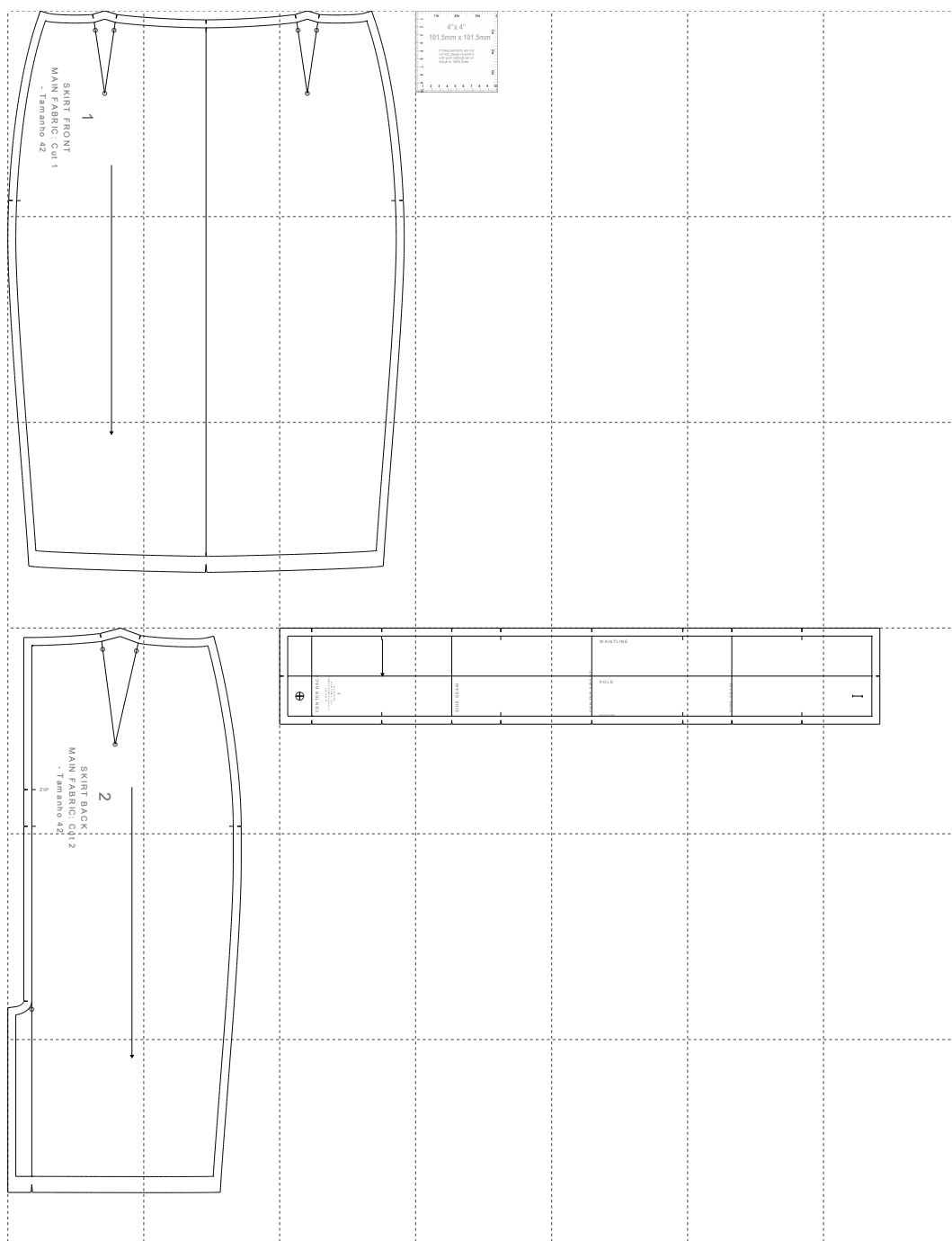
10. Button diameter 1.00 (0.39 in)

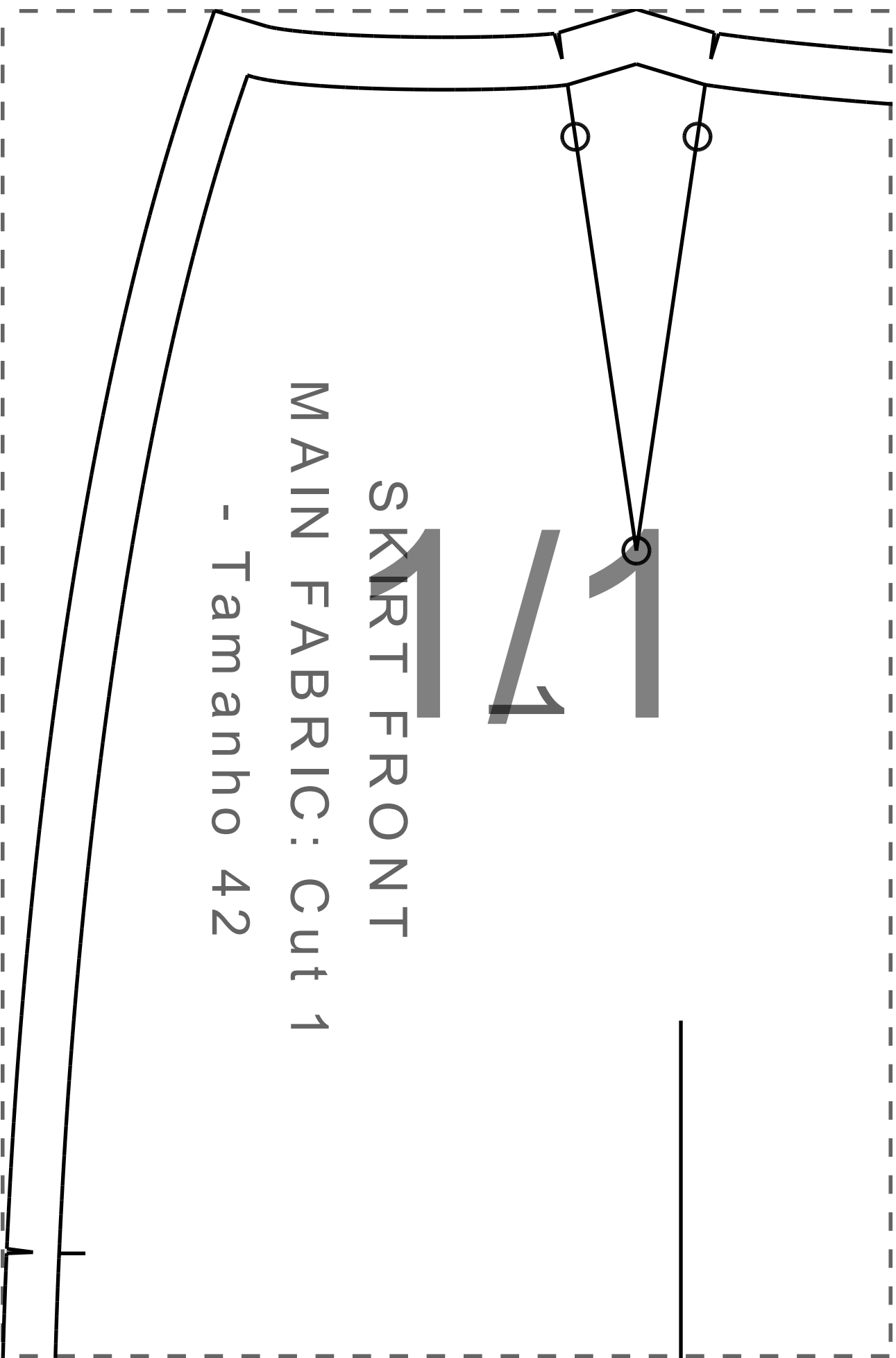
11. Waistband buttons quantity 1.00 (0.39 in)



Paper Size: A4;

Print Actual Size (100% Scale);





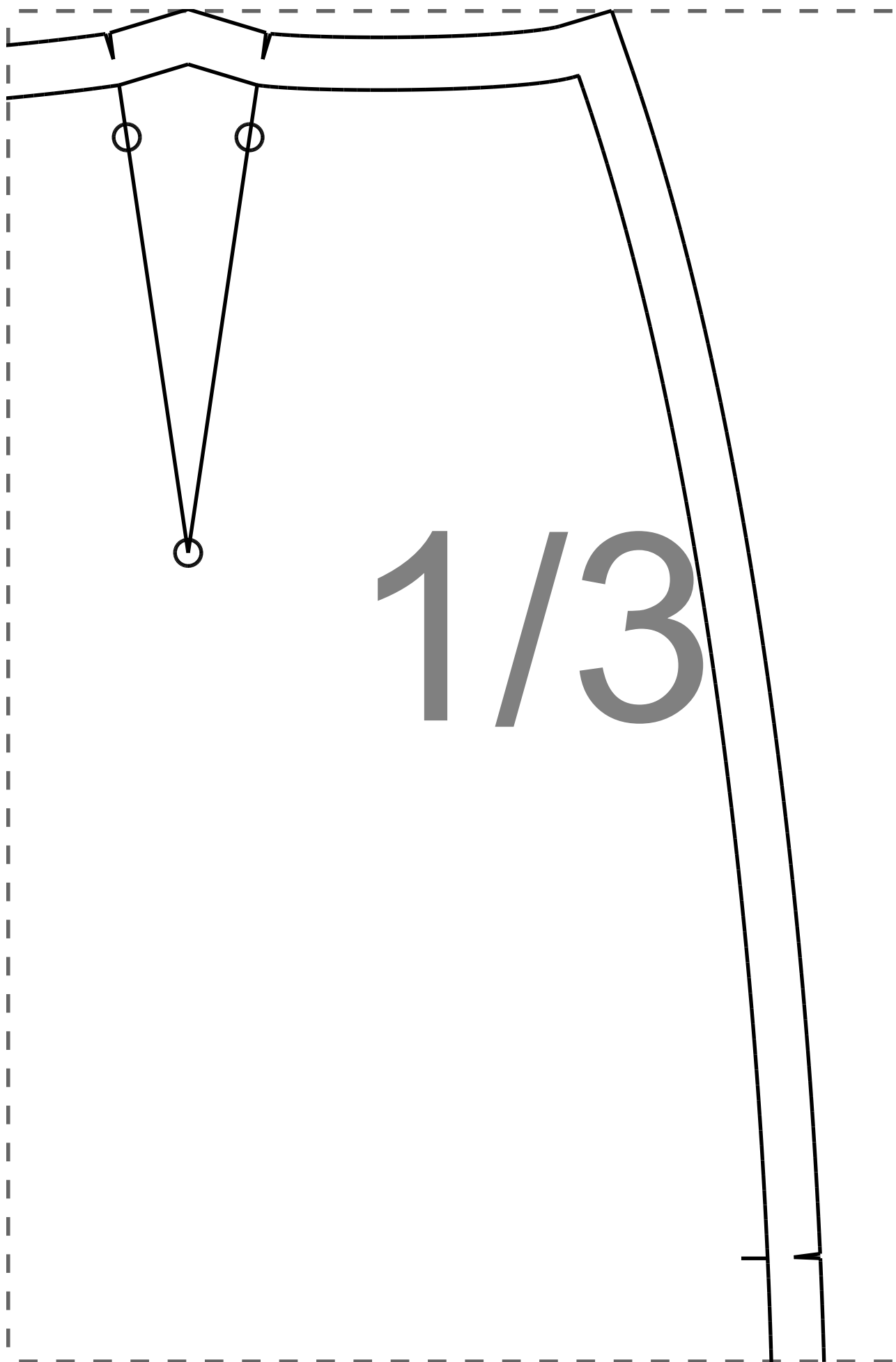
SKIRT FRONT

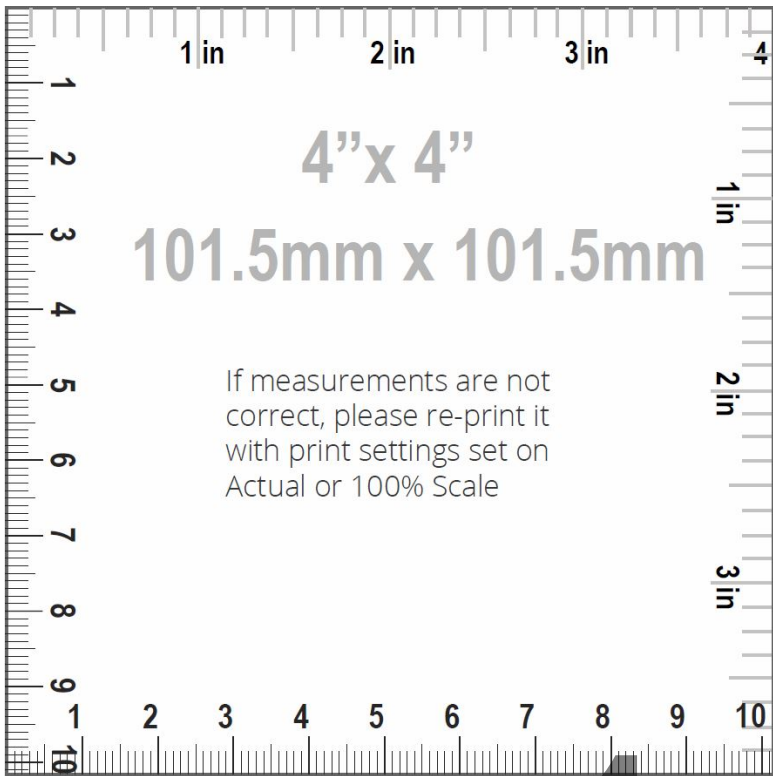
MAIN FABRIC: Cut 1

- Tamanho 42



$1/2$





If measurements are not  
correct, please re-print it  
with print settings set on  
Actual or 100% Scale

1/4

2/1





$2/2$



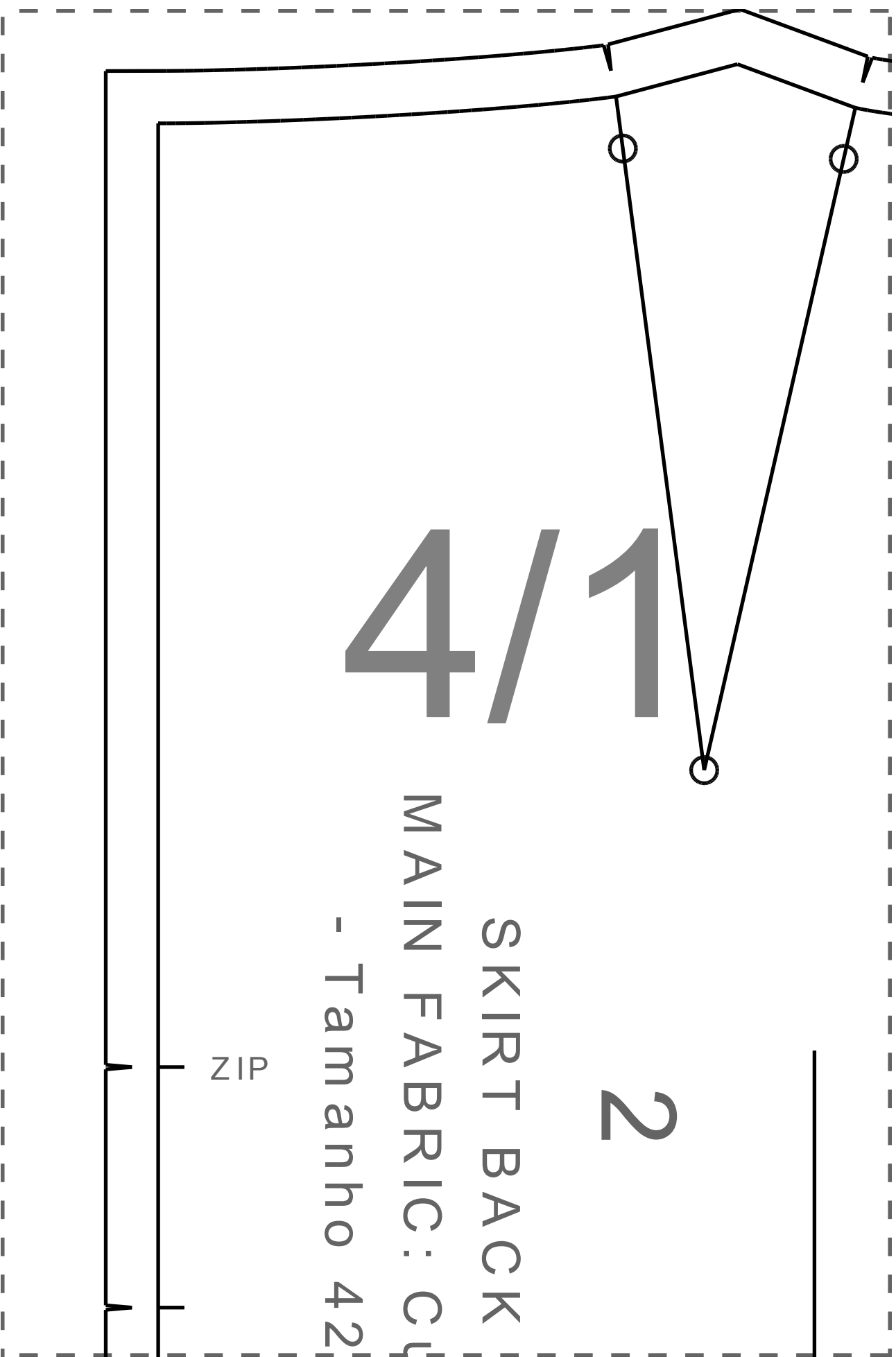
2/3

3/1



3/2

3/3



4 1/2

4/3

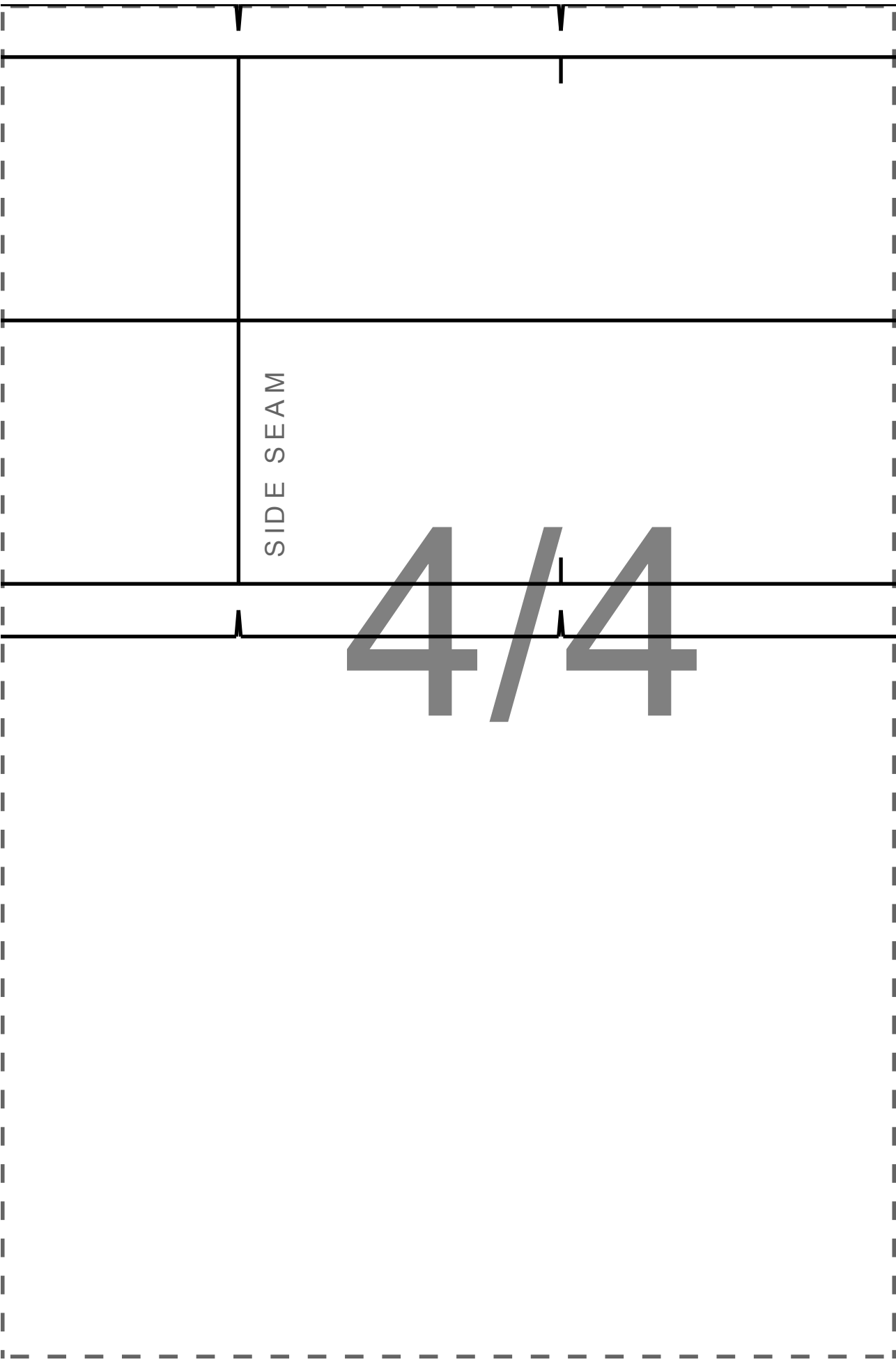
3

WAISTBAND  
MAIN FABRIC : Cut 1  
FUSIBLE INTERFACING : Cut 1  
- Tamanho 42

CENTER BACK

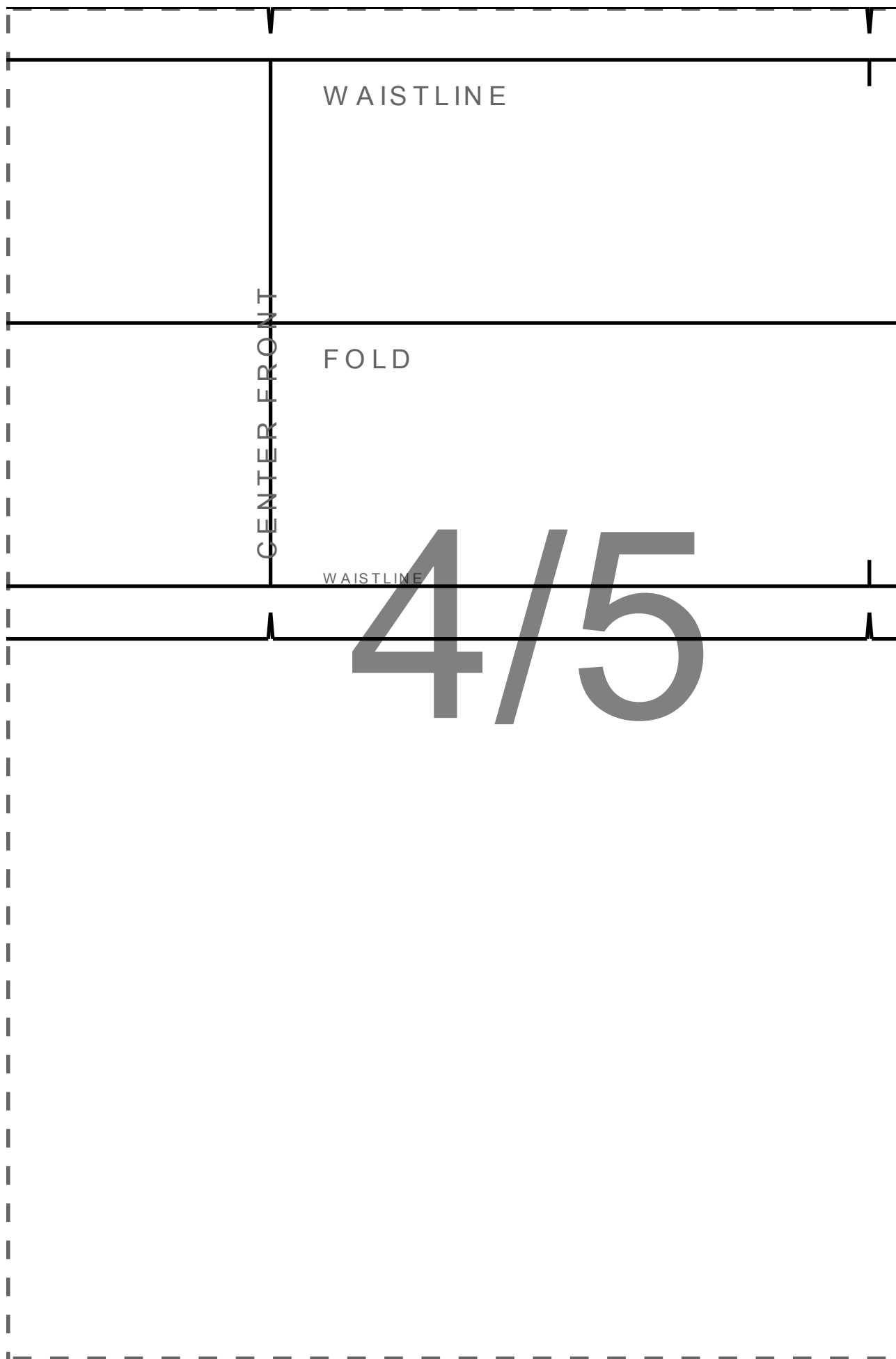


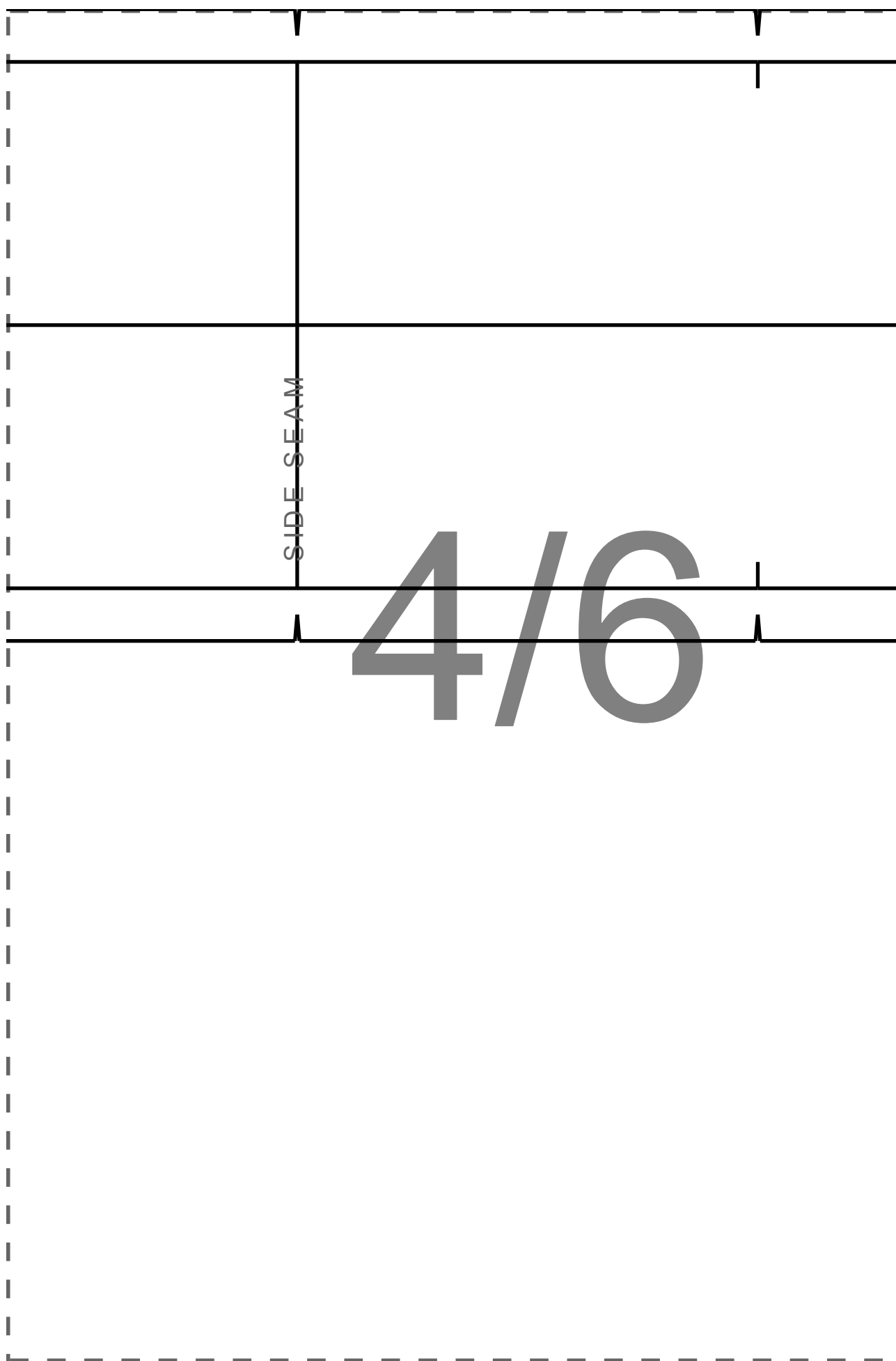


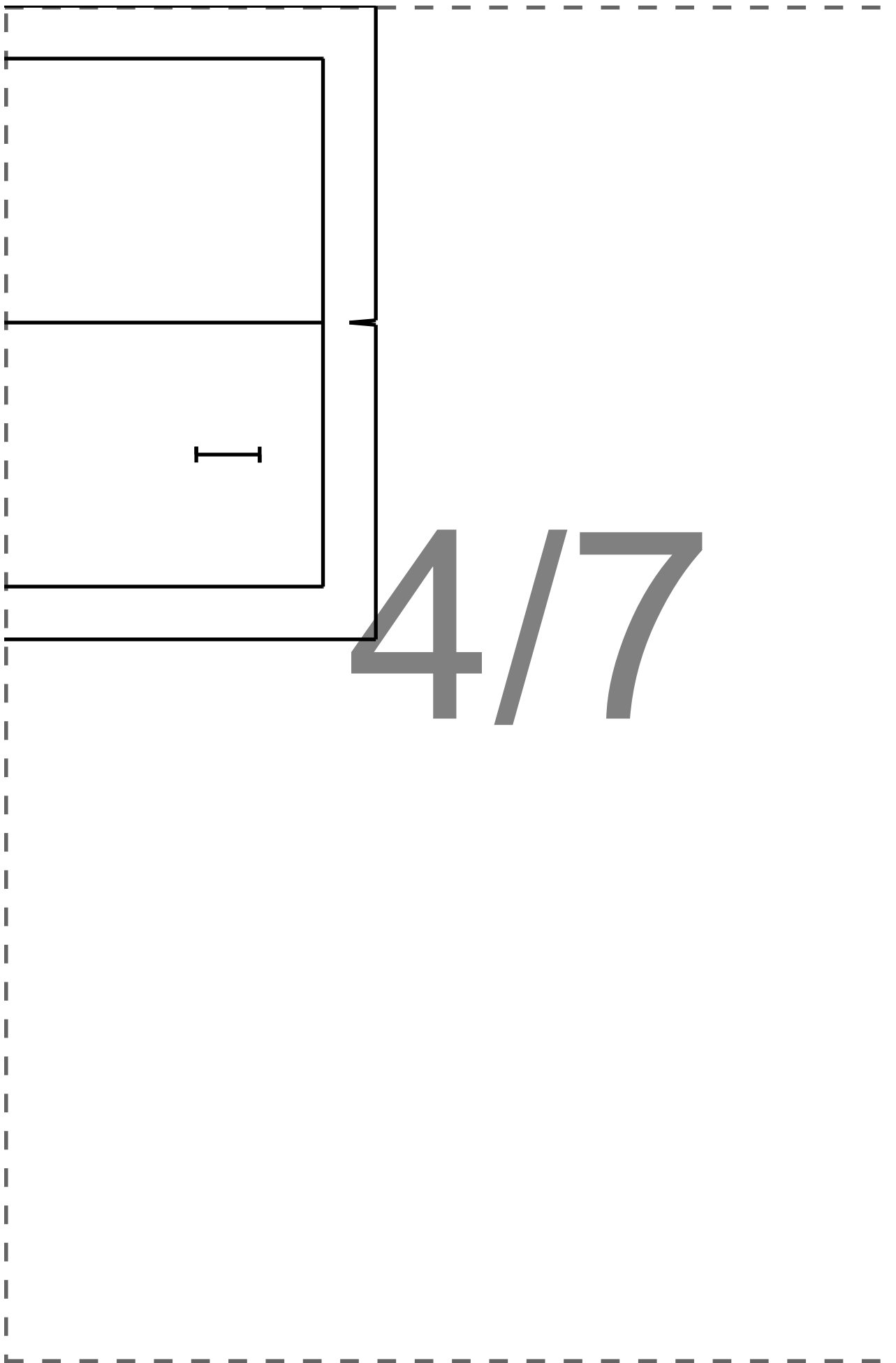


SIDE SEAM

4/4

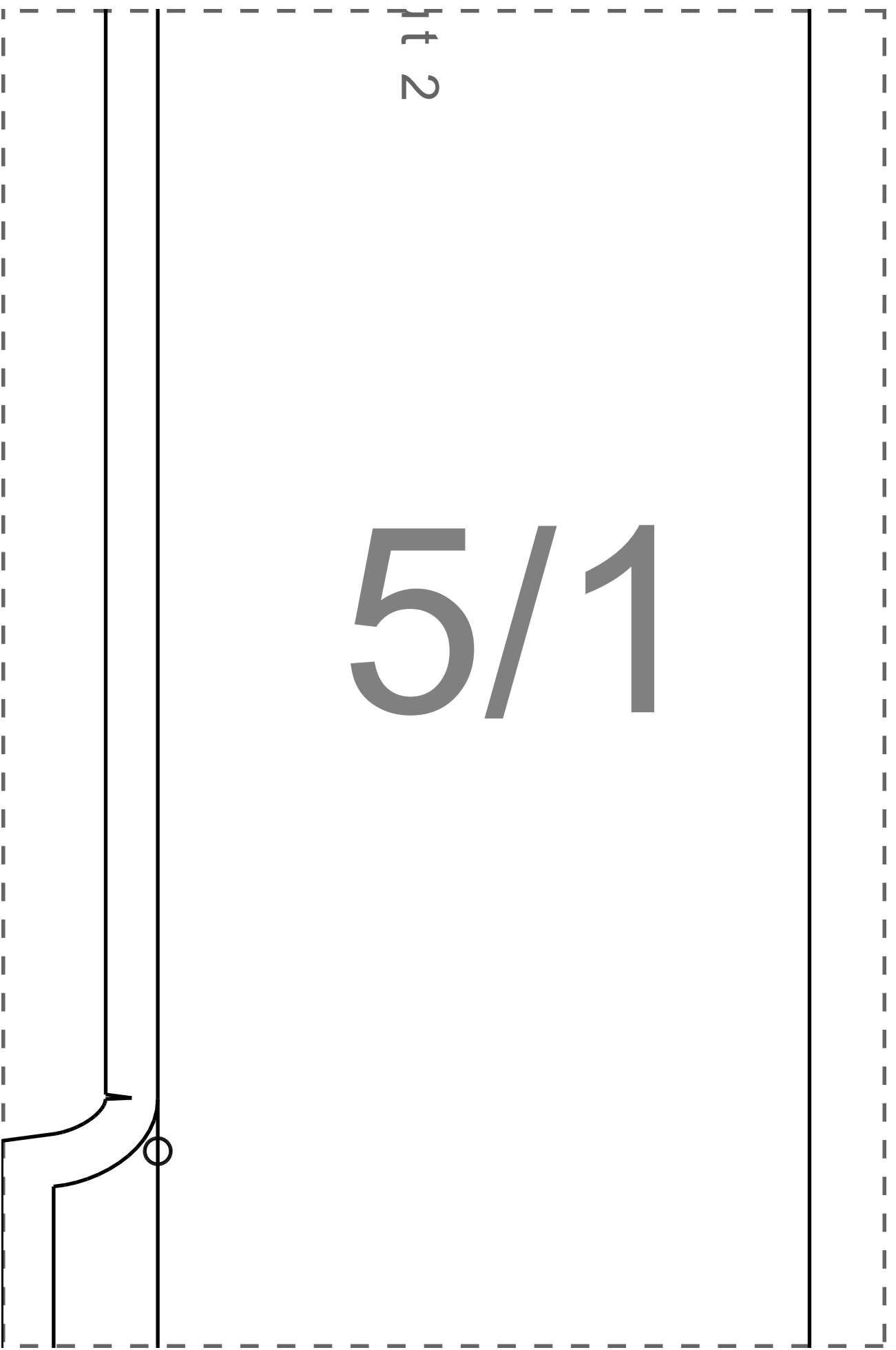






1 t 2

5/1



5/2

6/1

6/2