



# Print this Calibration Test page first!

Size: Height: 156.00, Bust: 80.00, Waist: 72.40, Hips: 82.60  
Pattern Name: -

## Notes

---

---

---

---

---

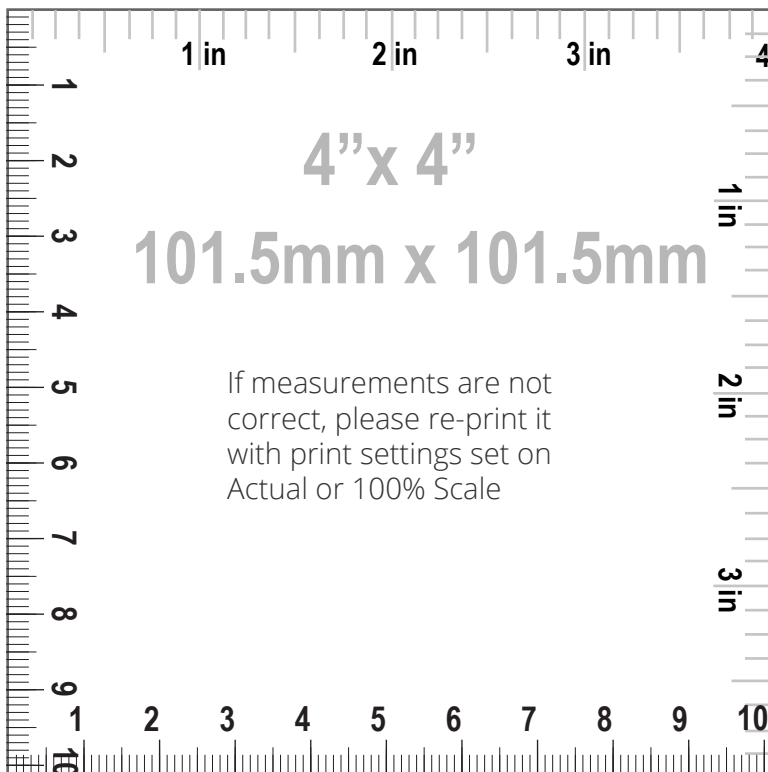
---

## HOW TO PRINT



### Printing

1. Once your Calibration Test Page has been printed, measure the 4"x 4" (10cm) scale box with a ruler. If the lengths match, you can confidently print your pattern. If the rulers do not match, set your print settings to 100% or Actual and retry.



### Cutting

Your printouts will always have a dashed border to perfectly match your sheets. Cut off the right edge of each page. Be careful not to cut beyond the dashed mark, otherwise your patterns will not align accurately.



### Taping

1. Group each sheet by the second number marked on each page i.e. in a group 1, there are: 1/1, 2/1, 3/1, 4/1, etc. In a group 2: 1/2, 2/2 etc.  
2. Place page 1/1 on top of the page 2/1, overlapping the right side edge. Match corners and crosses and secure with a pin or tape. Then use a scotch tape to permanently attach the sheets together.



Pattern Name: -

Seam Allowance: 1.00 (0.39 in)

Pattern pieces:

1, FRONT, MAIN FABRIC: Cut 1

3, NECK BINDING, MAIN FABRIC: Cut 1

2, BACK, MAIN FABRIC: Cut 1

Pattern Specs (Circumferences are divided by 2):

1. Center front length to hem 49.14 (19.35 in)

6. Across shoulders 28.16 (11.09 in)

2. Center back length to hem 54.15 (21.32 in)

7. Top side seam 36.57 (14.40 in)

3. Armhole front 23.84 (9.39 in)

8. Neckline length 50.89 (20.04 in)

4. Armhole back 25.72 (10.13 in)

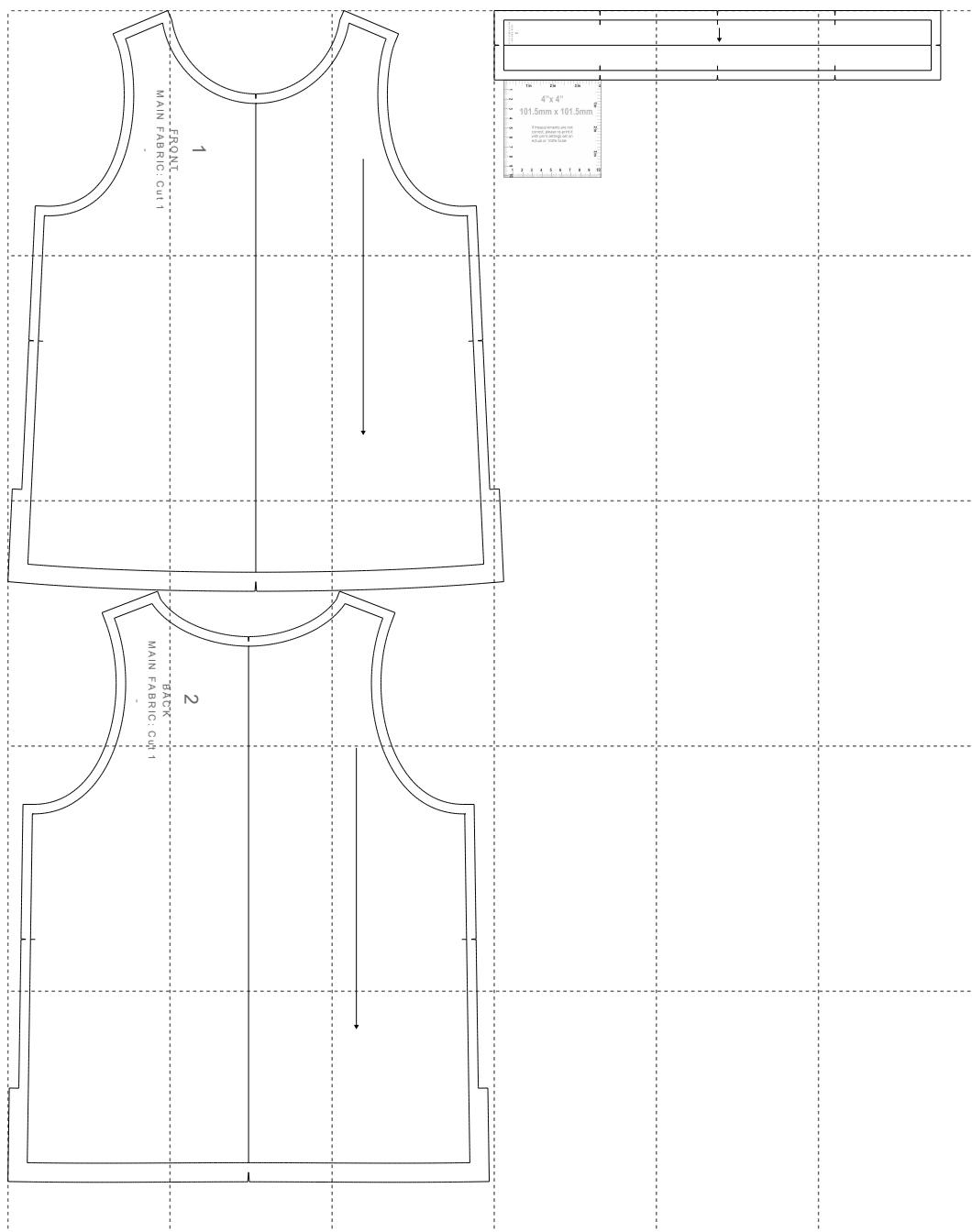
9. Top binding width 2.64 (1.04 in)

5. Shoulder width 4.25 (1.67 in)



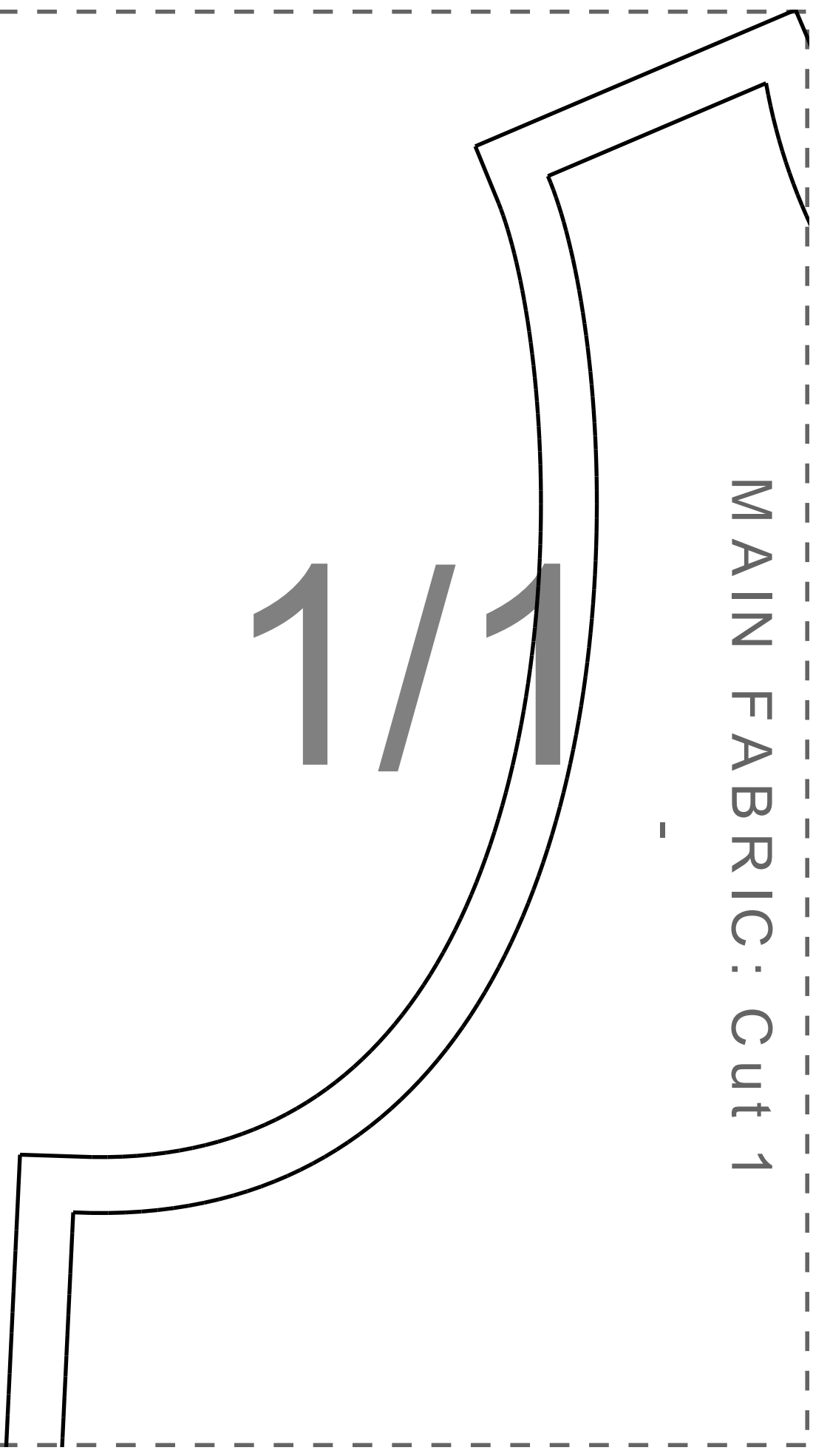
Paper Size: A4;

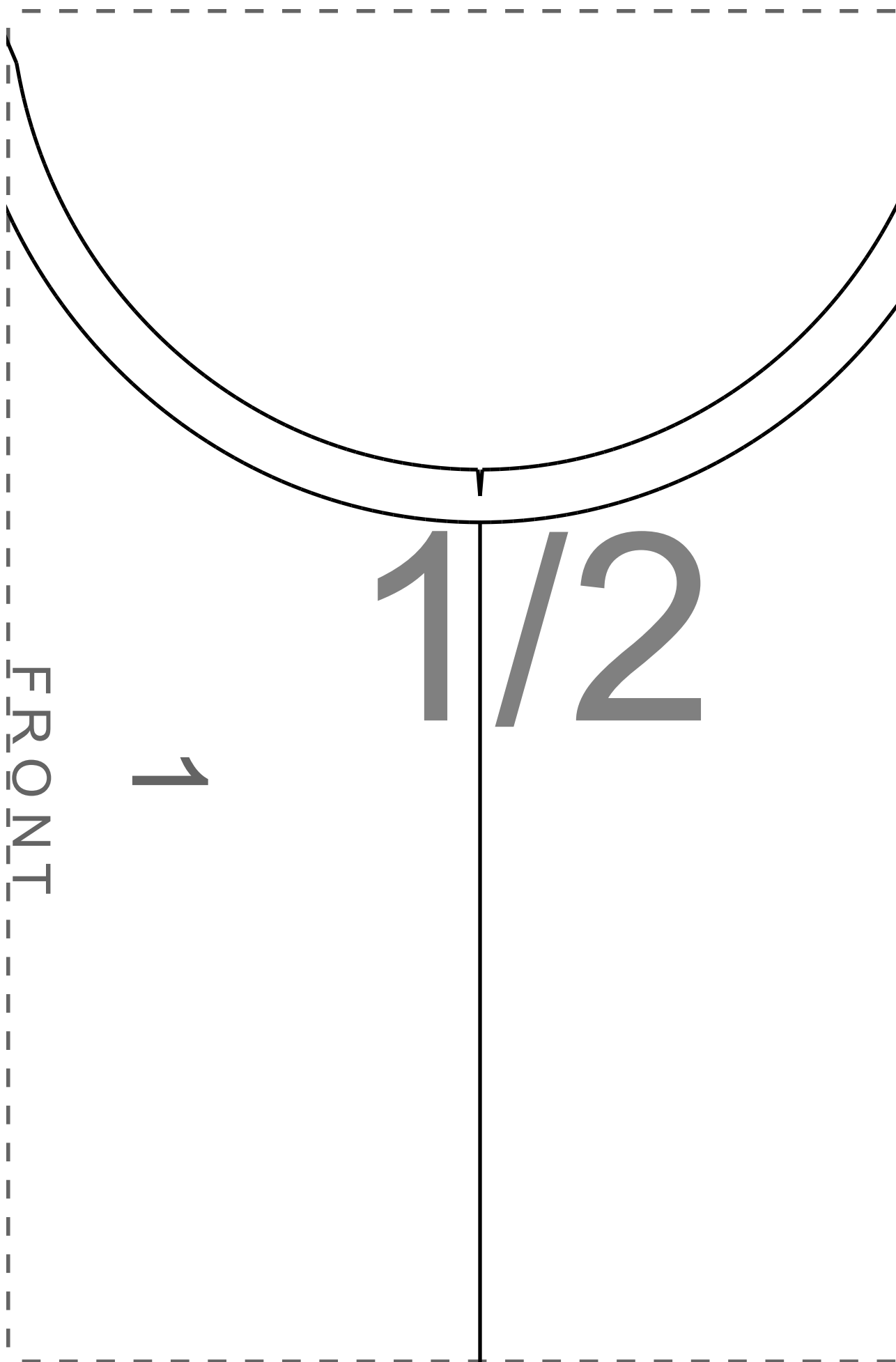
Print Actual Size (100% Scale);



MAIN FABRIC: Cut 1

1/1





FRONT

1

1/2



1/3

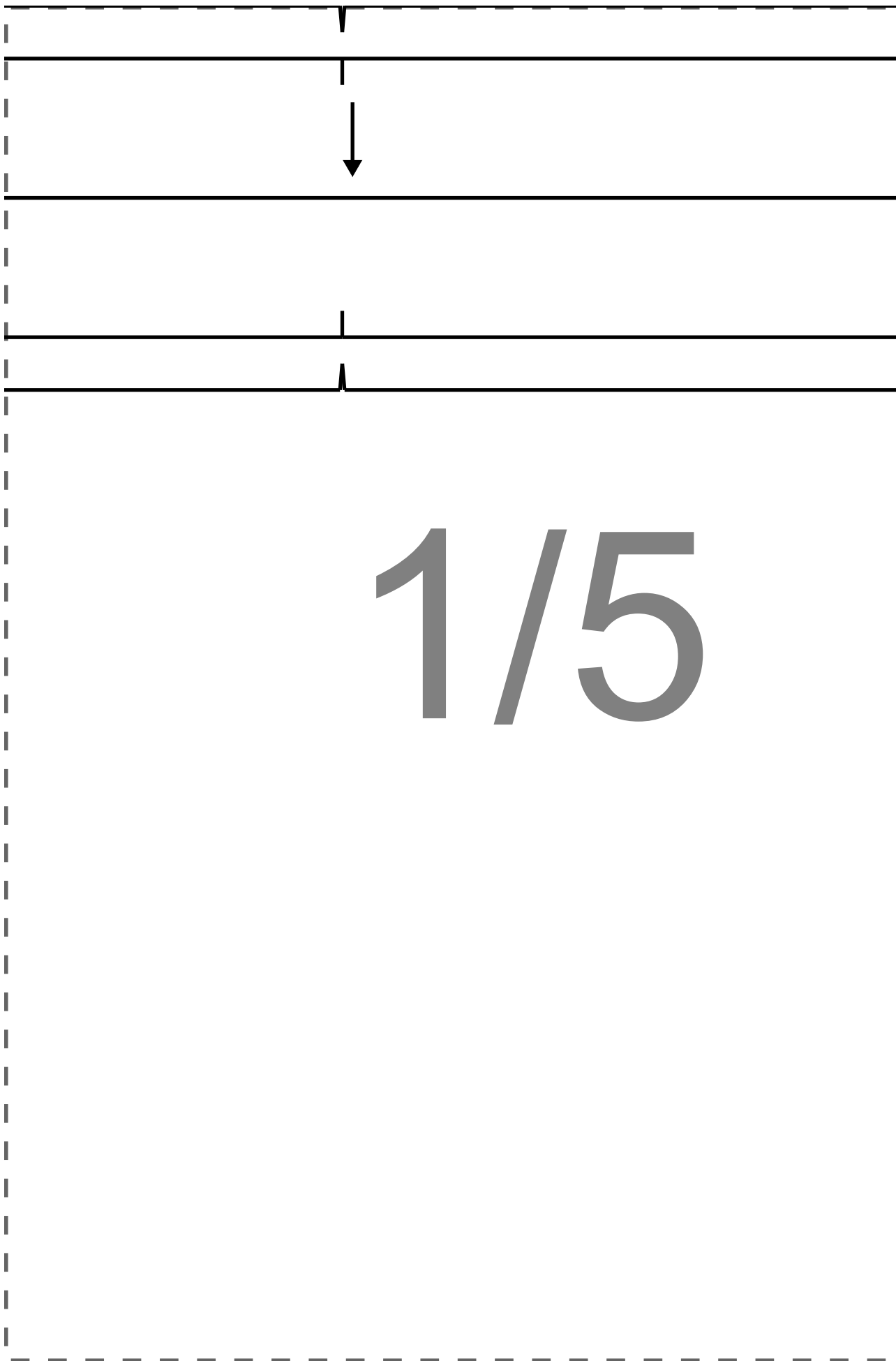
NECK BINDING  
MAIN FABRIC: CUT 1

3

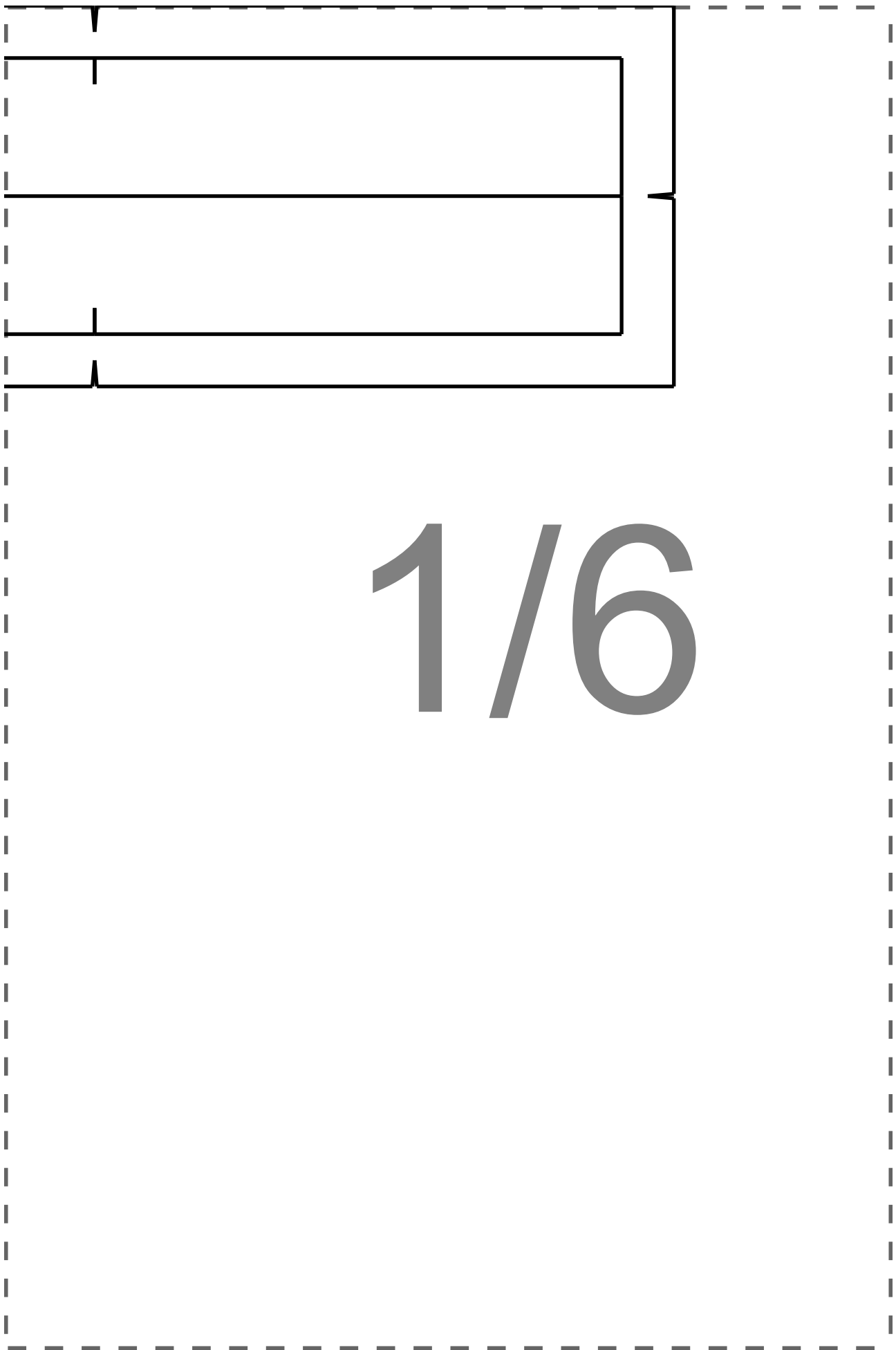
4"x 4"  
101.5mm x 101.5mm

If measurements are not  
correct, please re-print it  
with print settings set on  
Actual or 100% Scale

14

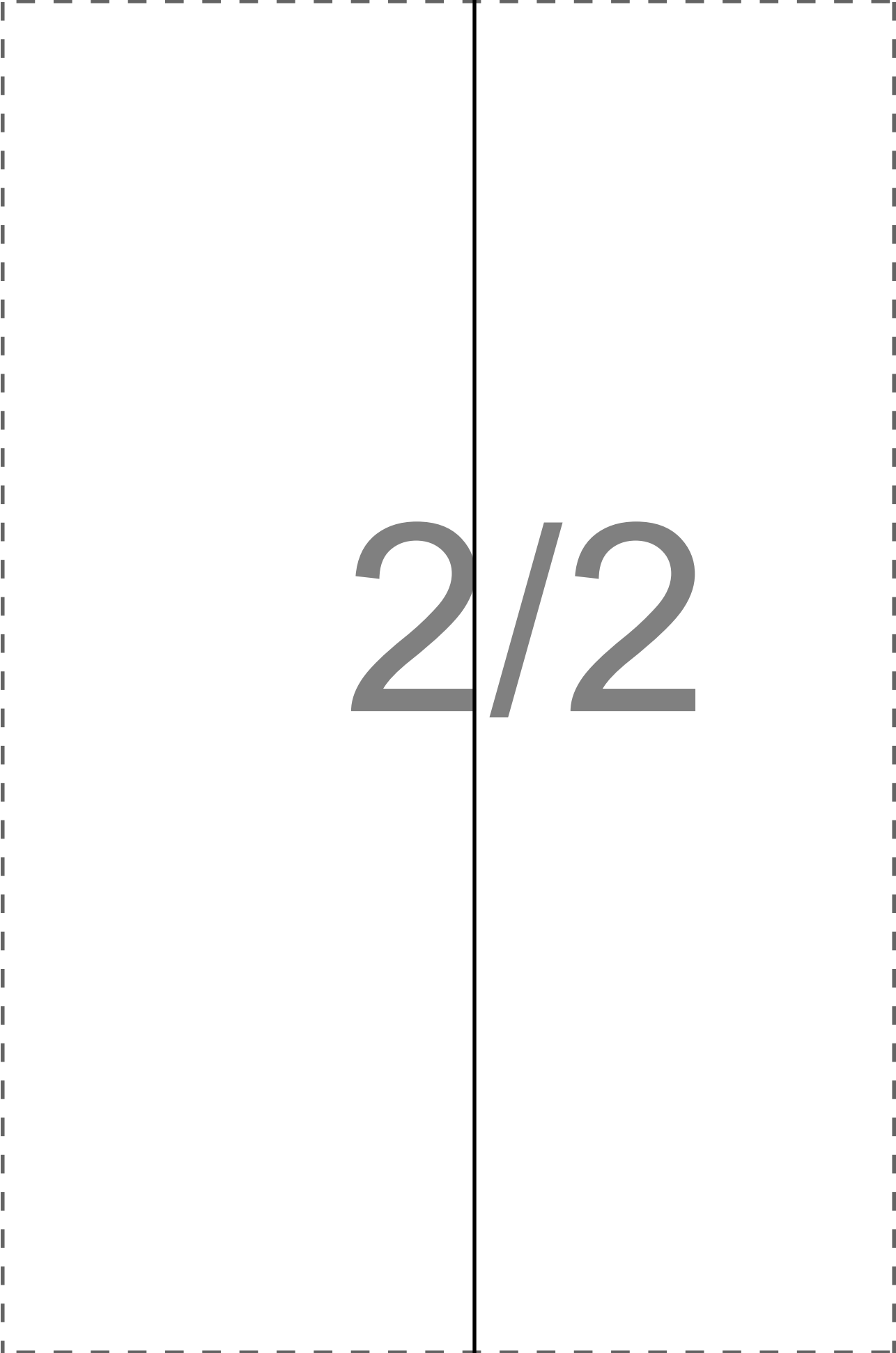








2/1



2/2



$\frac{2}{3}$

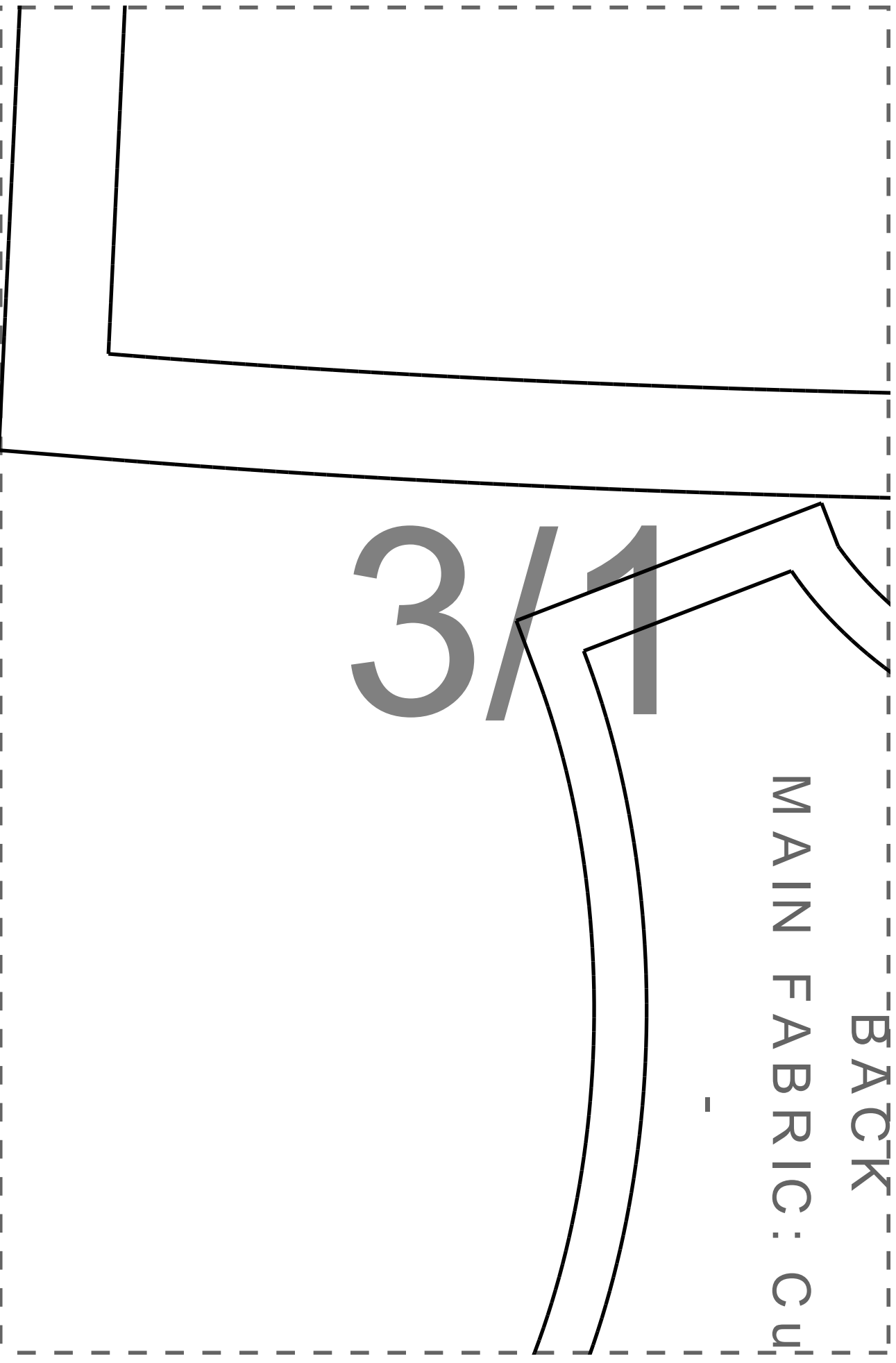
2/4

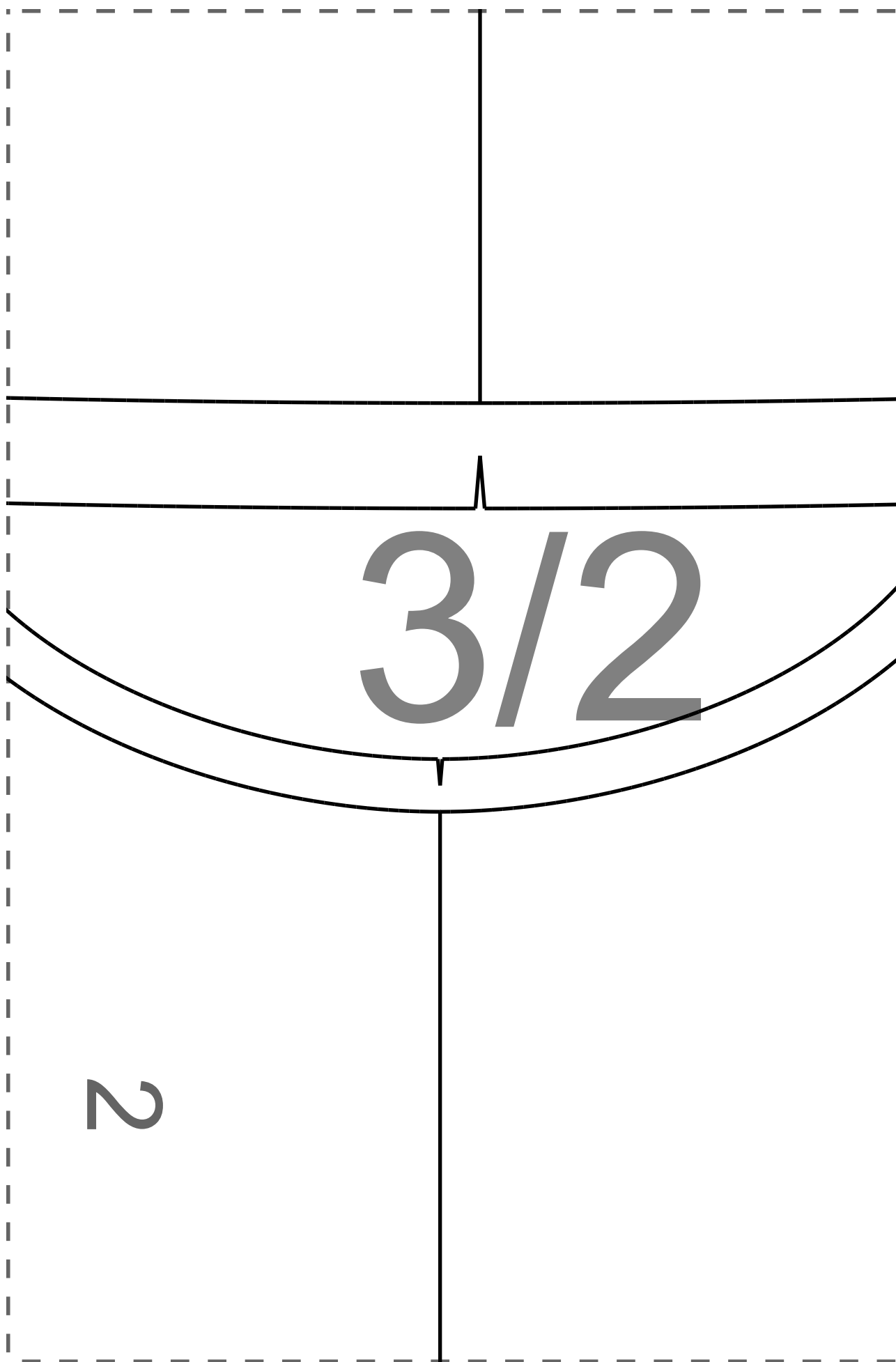


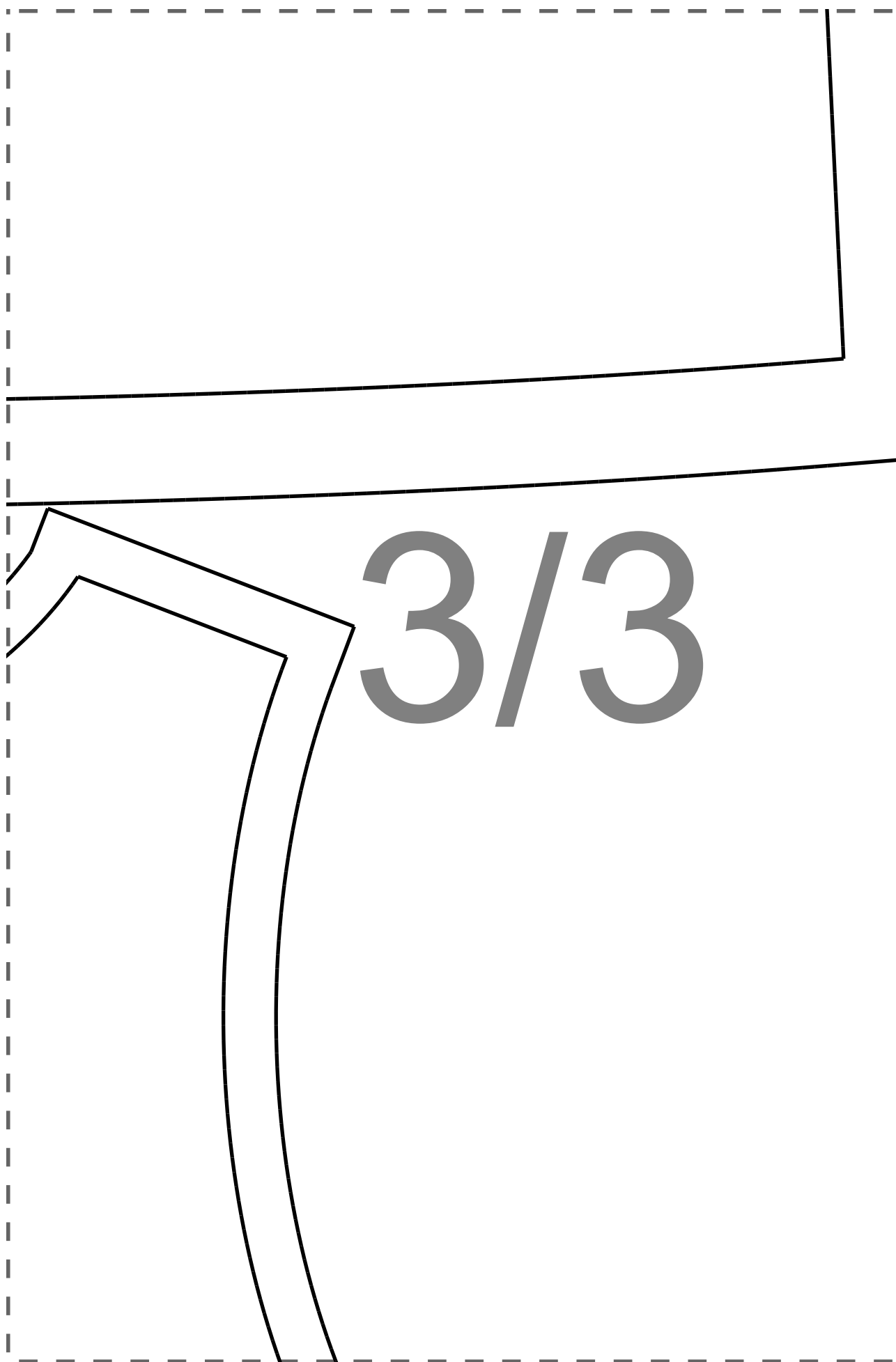
BACK

MAIN FABRIC: CU

3/1







3/3





3/4

t  
1

4/1



4/2



$4/3$

5/1

5/2



5/3