



Print this Calibration Test page first!

Size: Height: 176.00, Bust: 112.00, Waist: 100.00, Hips: 108.40
Pattern Name: -

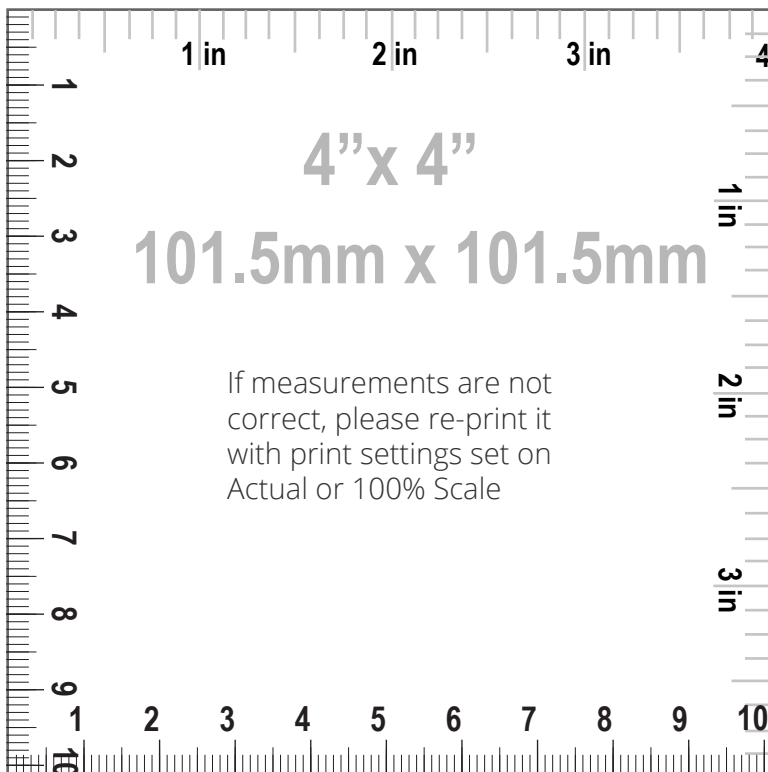
Notes

HOW TO PRINT



Printing

1. Once your Calibration Test Page has been printed, measure the 4"x 4" (10cm) scale box with a ruler. If the lengths match, you can confidently print your pattern. If the rulers do not match, set your print settings to 100% or Actual and retry.



Cutting

Your printouts will always have a dashed border to perfectly match your sheets. Cut off the right edge of each page. Be careful not to cut beyond the dashed mark, otherwise your patterns will not align accurately.



Taping

1. Group each sheet by the second number marked on each page i.e. in a group 1, there are: 1/1, 2/1, 3/1, 4/1, etc. In a group 2: 1/2, 2/2 etc.
2. Place page 1/1 on top of the page 2/1, overlapping the right side edge. Match corners and crosses and secure with a pin or tape. Then use a scotch tape to permanently attach the sheets together.



Pattern Name: -

Seam Allowance: 1.00 (0.39 in)

Pattern pieces:

- | | |
|--------------------------------------------------------------------|-------------------------------------------------------------------------|
| 1, BACK, MAIN FABRIC: Cut 1 | 6, FRONT LEFT, MAIN FABRIC: Cut 1 |
| 2, SLEEVE, MAIN FABRIC: Cut 2 | 7, YOKE, MAIN FABRIC: Cut 2 |
| 3, COLLAR STAND, MAIN FABRIC: Cut 2,
FUSIBLE INTERFACING: Cut 2 | 8, UPPER POCKET FLAP, MAIN FABRIC: Cut 2,
FUSIBLE INTERFACING: Cut 2 |
| 4, COLLAR, MAIN FABRIC: Cut 2, FUSIBLE
INTERFACING: Cut 2 | 9, UPPER PATCH POCKET, MAIN FABRIC: Cut 1 |
| 5, FRONT RIGHT, MAIN FABRIC: Cut 1 | |

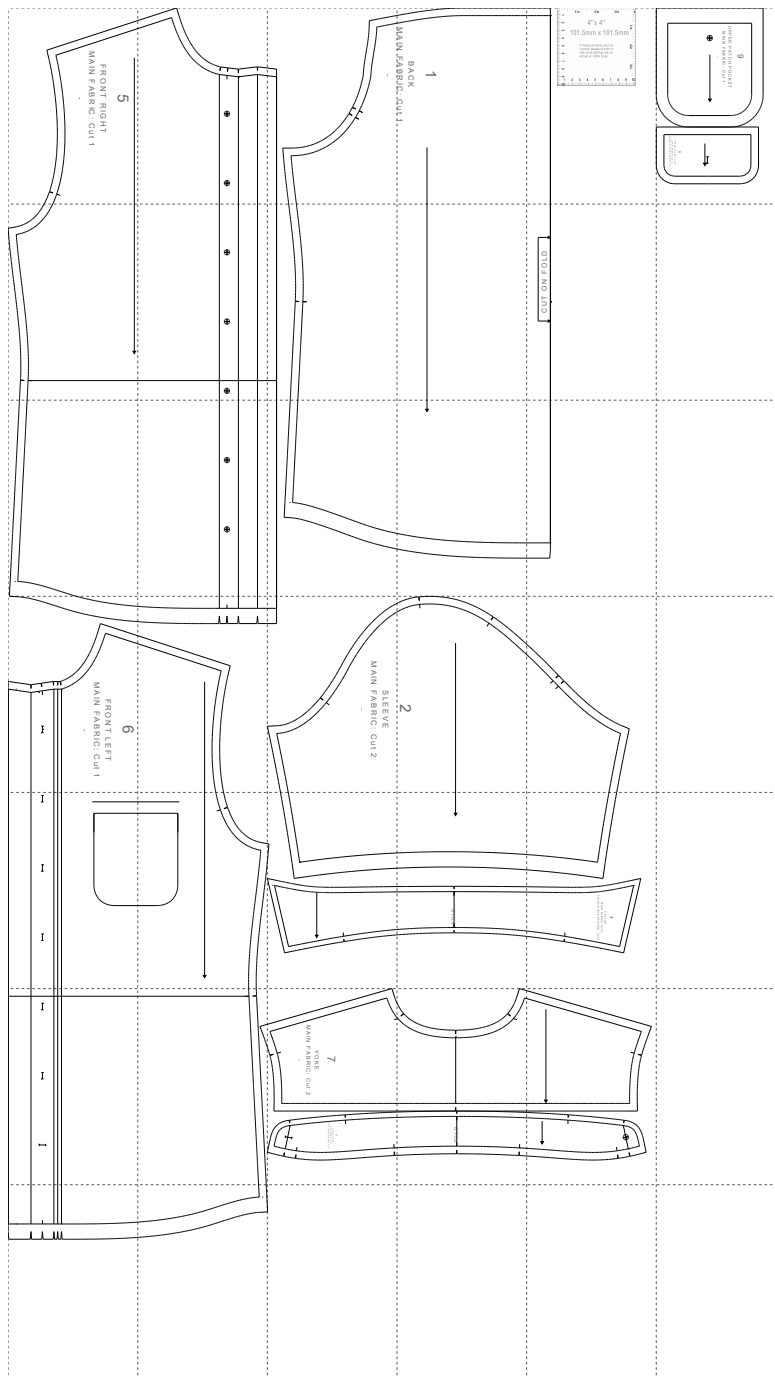
Pattern Specs (Circumferences are divided by 2):

- | | |
|------------------------------------------------------|--------------------------------------------------|
| 1. Center front upper pocket position 5.74 (2.26 in) | 20. Button diameter 0.70 (0.28 in) |
| 2. Waistline upper pocket position 11.88 (4.68 in) | 21. Front buttons quantity 7.00 (2.76 in) |
| 3. Upper pocket entry length 11.00 (4.33 in) | 22. Upper pocket buttons quantity 1.00 (0.39 in) |
| 4. Armhole front 26.30 (10.35 in) | 23. Upper pocket button diameter 0.70 (0.28 in) |
| 5. Armhole yoke 9.63 (3.79 in) | 24. Upper pocket height 12.10 (4.76 in) |
| 6. Armhole back 22.59 (8.89 in) | 25. Upper pocket flap width 11.40 (4.49 in) |
| 7. Shoulder width 16.49 (6.49 in) | 26. Collar buttons quantity 1.00 (0.39 in) |
| 8. Across shoulders 46.79 (18.42 in) | 27. Collar button diameter 0.70 (0.28 in) |
| 9. Neck opening 15.08 (5.94 in) | 28. Stand height 3.90 (1.54 in) |
| 10. Front neck drop 7.61 (3.00 in) | 29. Stand length 42.03 (16.55 in) |
| 11. Neckline length 45.09 (17.75 in) | 30. Collar width 4.70 (1.85 in) |
| 12. Front length from HPS to hem 77.42 (30.48 in) | 31. Collar edges length 8.22 (3.24 in) |
| 13. Across chest 61.60 (24.25 in) | 32. Collar length 43.73 (17.22 in) |
| 14. Center front length to hem 69.81 (27.48 in) | 33. Sleeve length 32.46 (12.78 in) |
| 15. Center back length to hem 77.90 (30.67 in) | 34. Sleeve cap length 48.85 (19.23 in) |
| 16. Across back 47.06 (18.53 in) | 35. Armhole length 58.52 (23.04 in) |
| 17. Side seam 45.58 (17.94 in) | 36. Sleeve upper arm width 8.96 (3.53 in) |
| 18. Waist 58.50 (23.03 in) | 37. Sleeve opening 39.17 (15.42 in) |
| 19. Hemline sweep 61.20 (24.09 in) | |



Paper Size: A4;

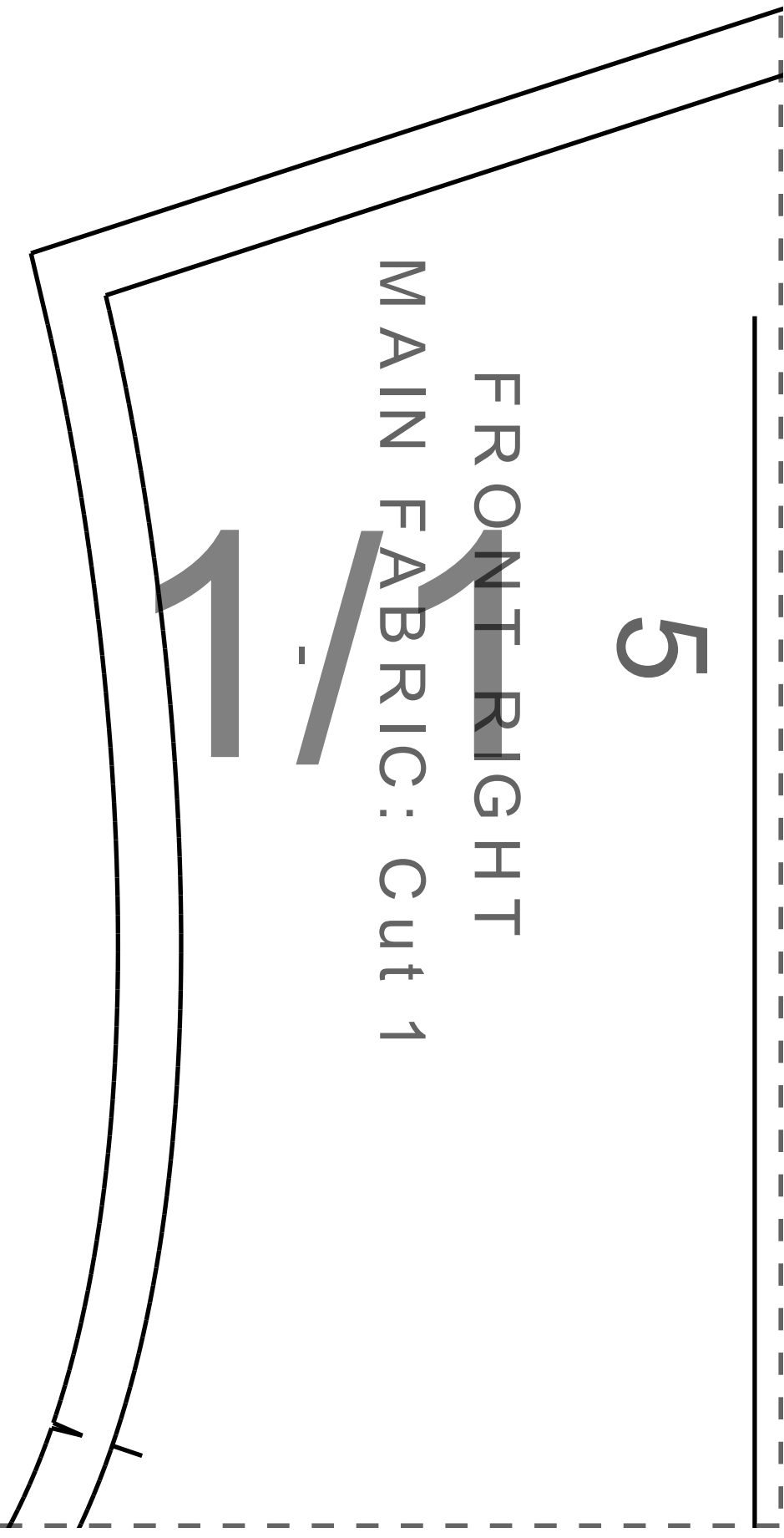
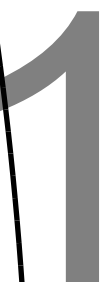
Print Actual Size (100% Scale);

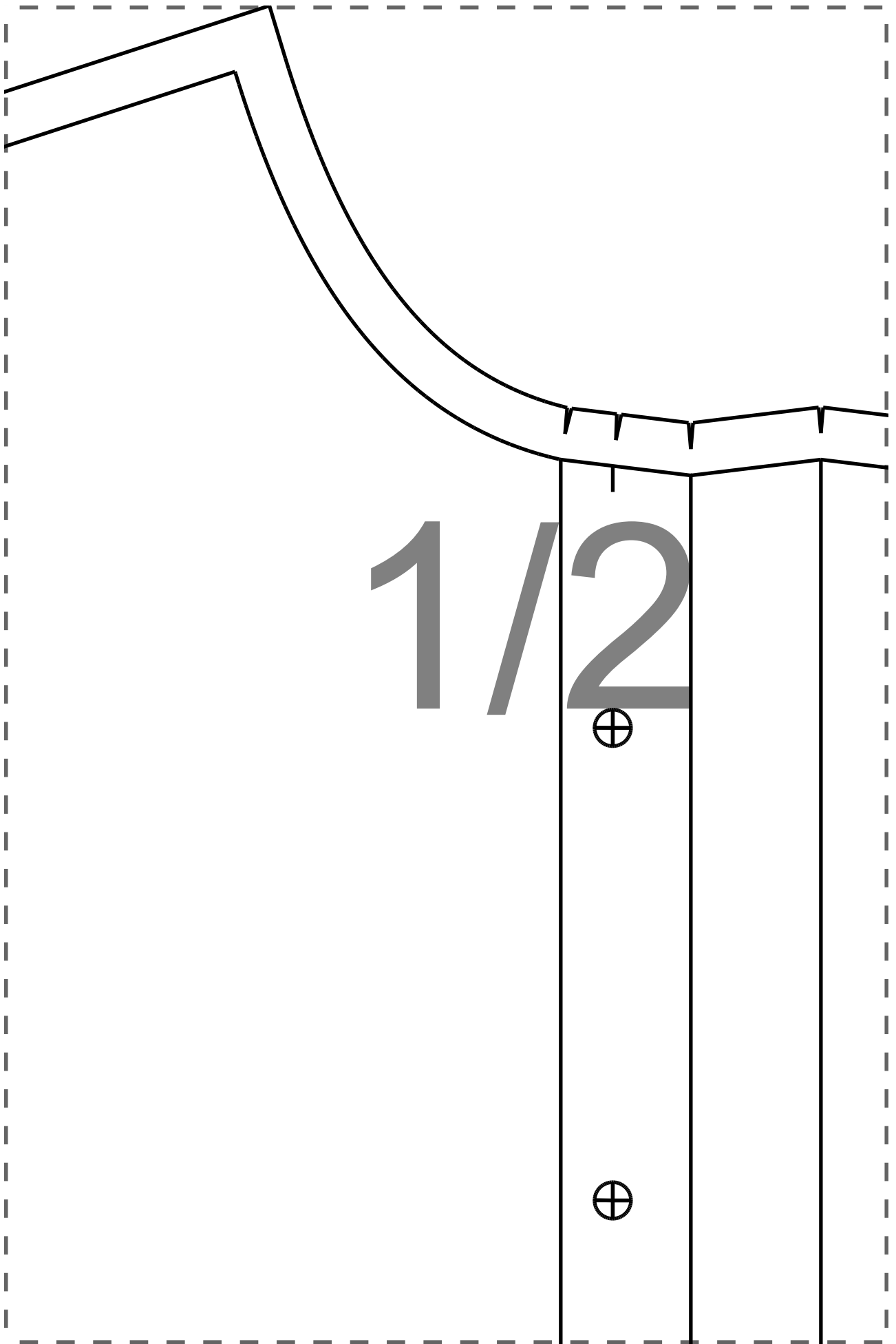


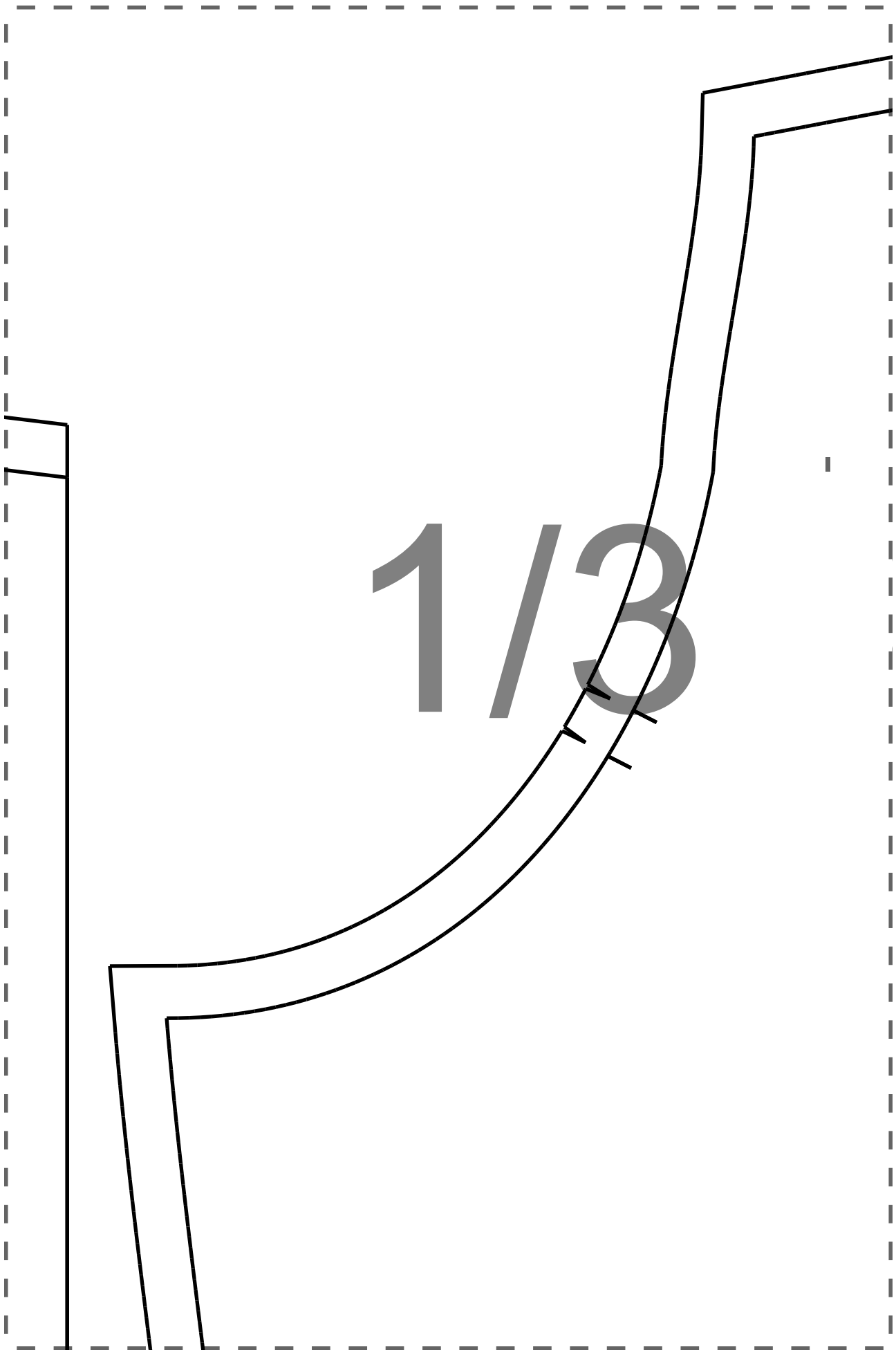
5

FRONT RIGHT

MAIN FABRIC: Cut 1





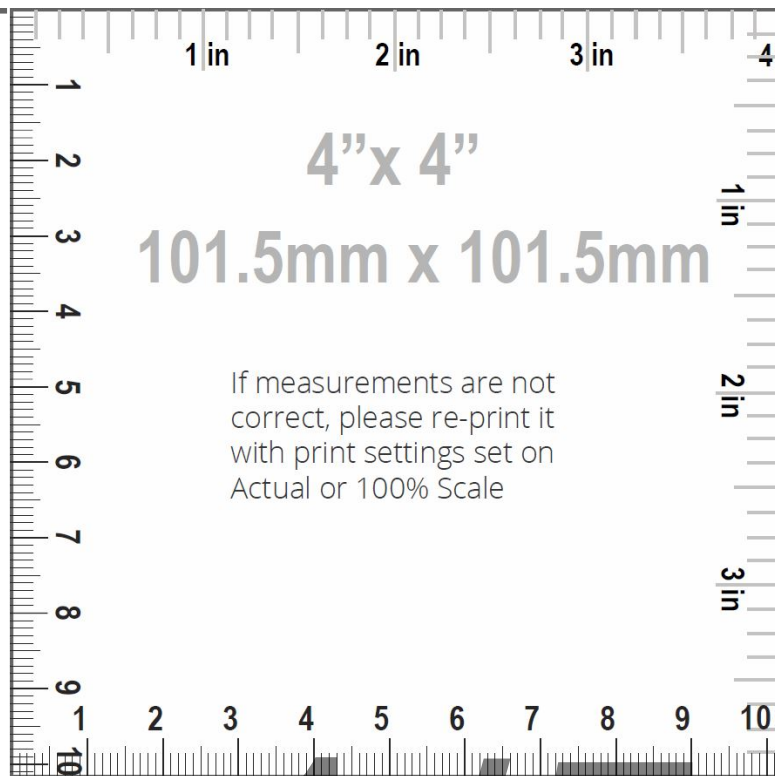


1/4

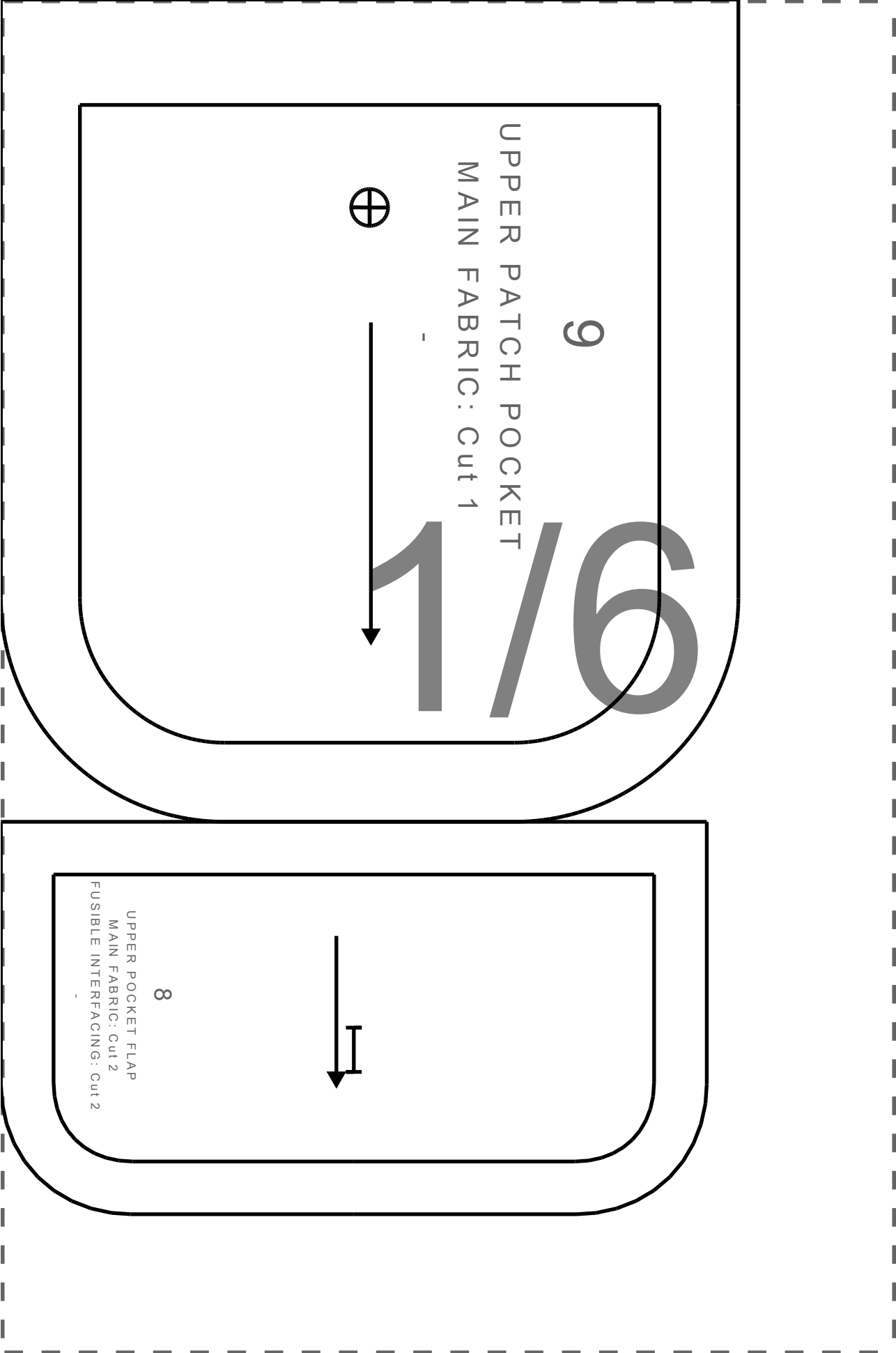
1

BACK

MAIN FABRIC: Cut 1



1/5



9

UPPER PATCH POCKET

MAIN FABRIC: Cut 1



1/6

8

UPPER POCKET FLAP

MAIN FABRIC: Cut 2

FUSIBLE INTERFACING: Cut 2



2/1



2/2





2/3

2/4

CUT ON FOLD

2/5



3/1

3/2

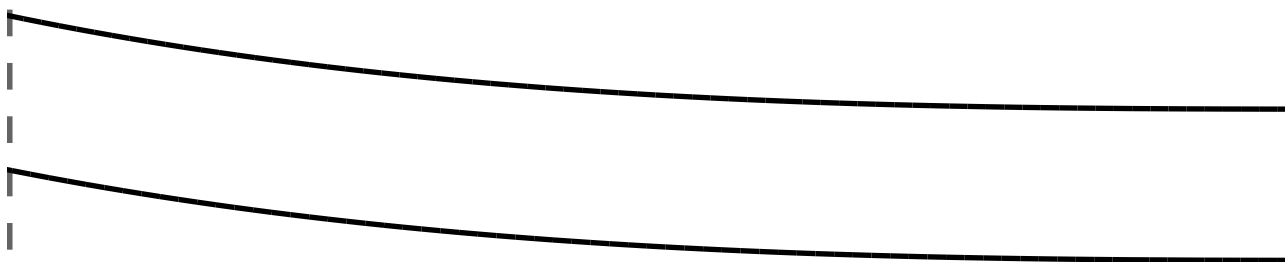




3/3



3/4

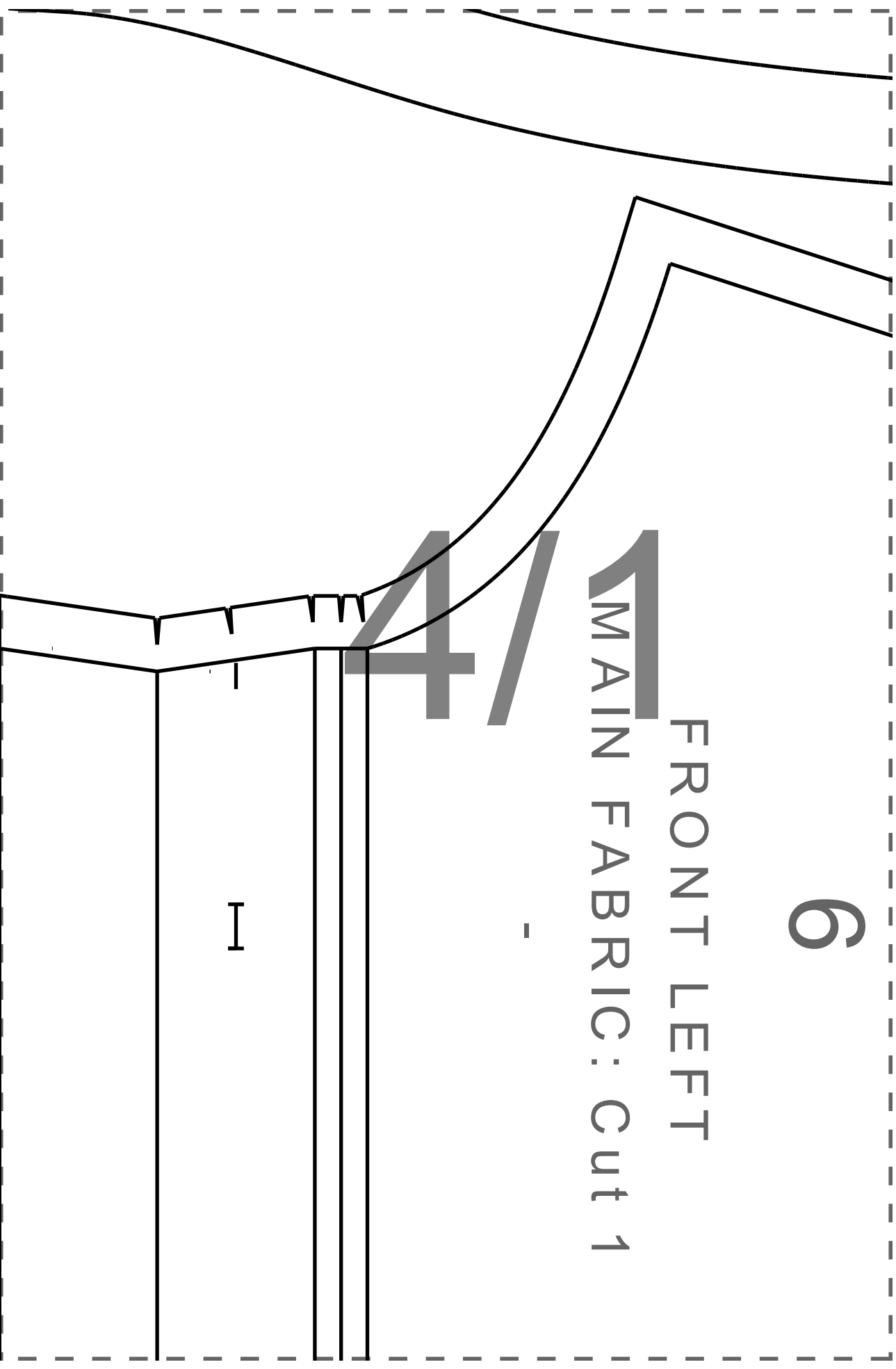


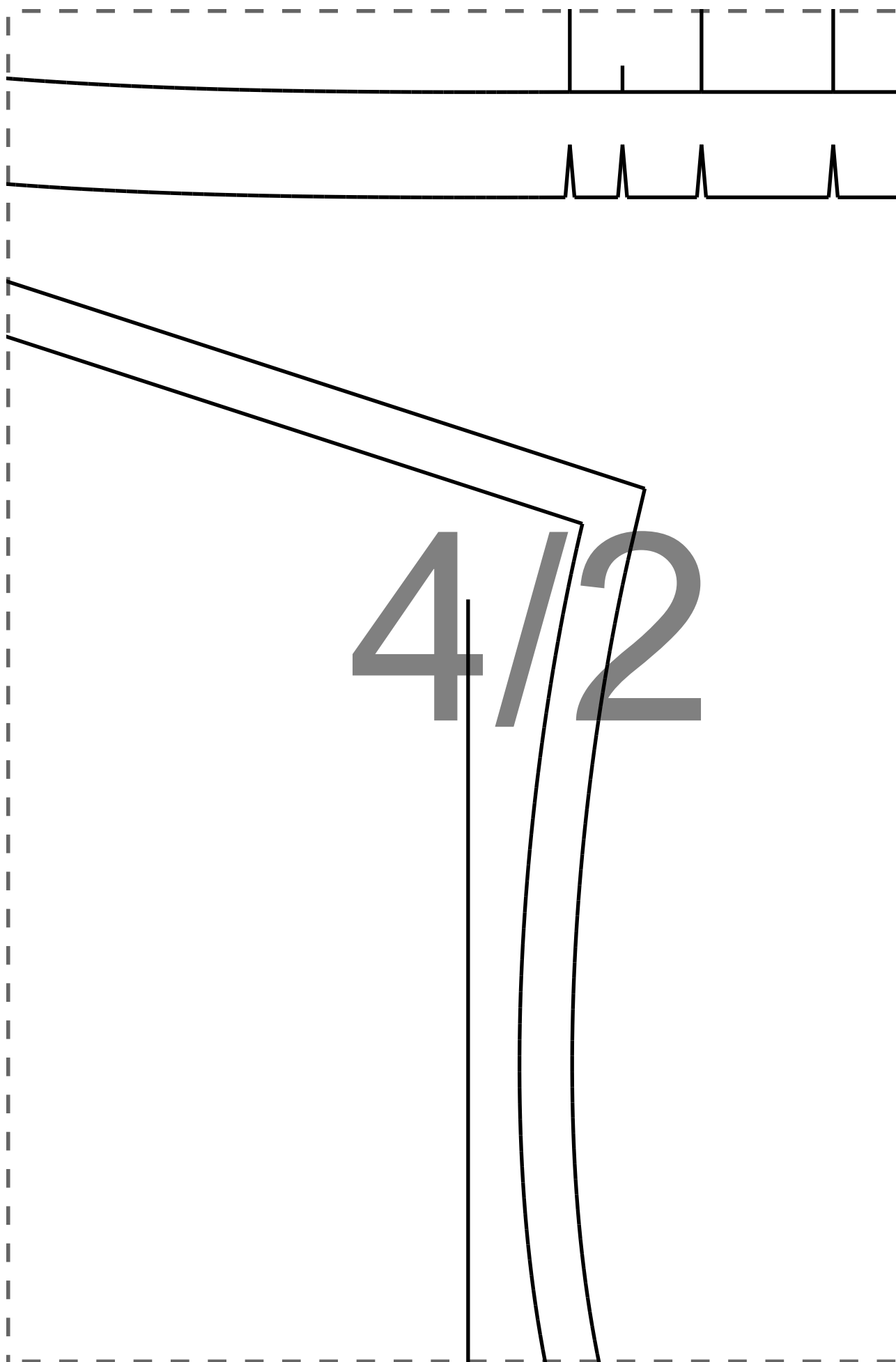
3/5

6

FRONT LEFT

MAIN FABRIC: Cut 1

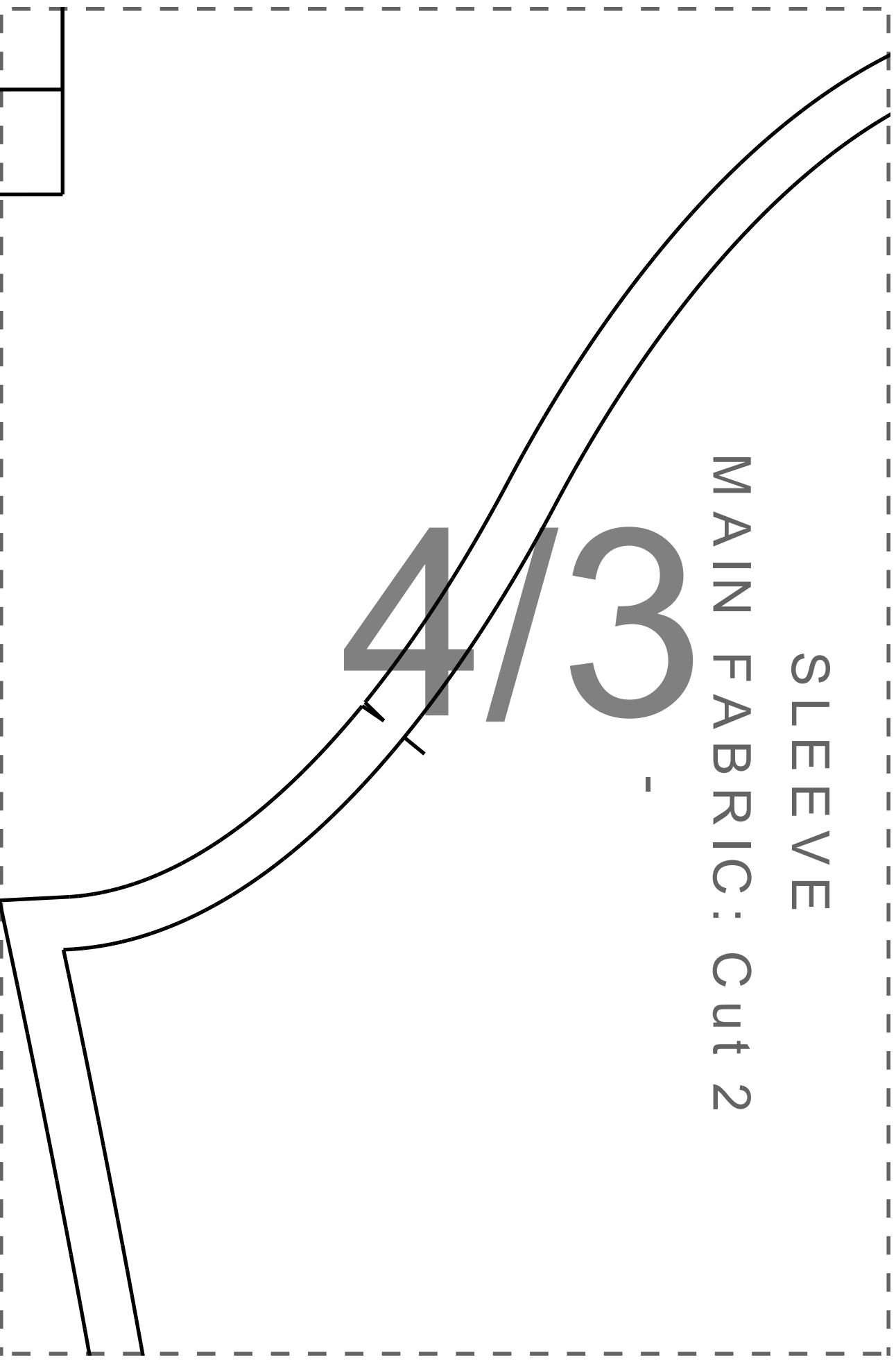


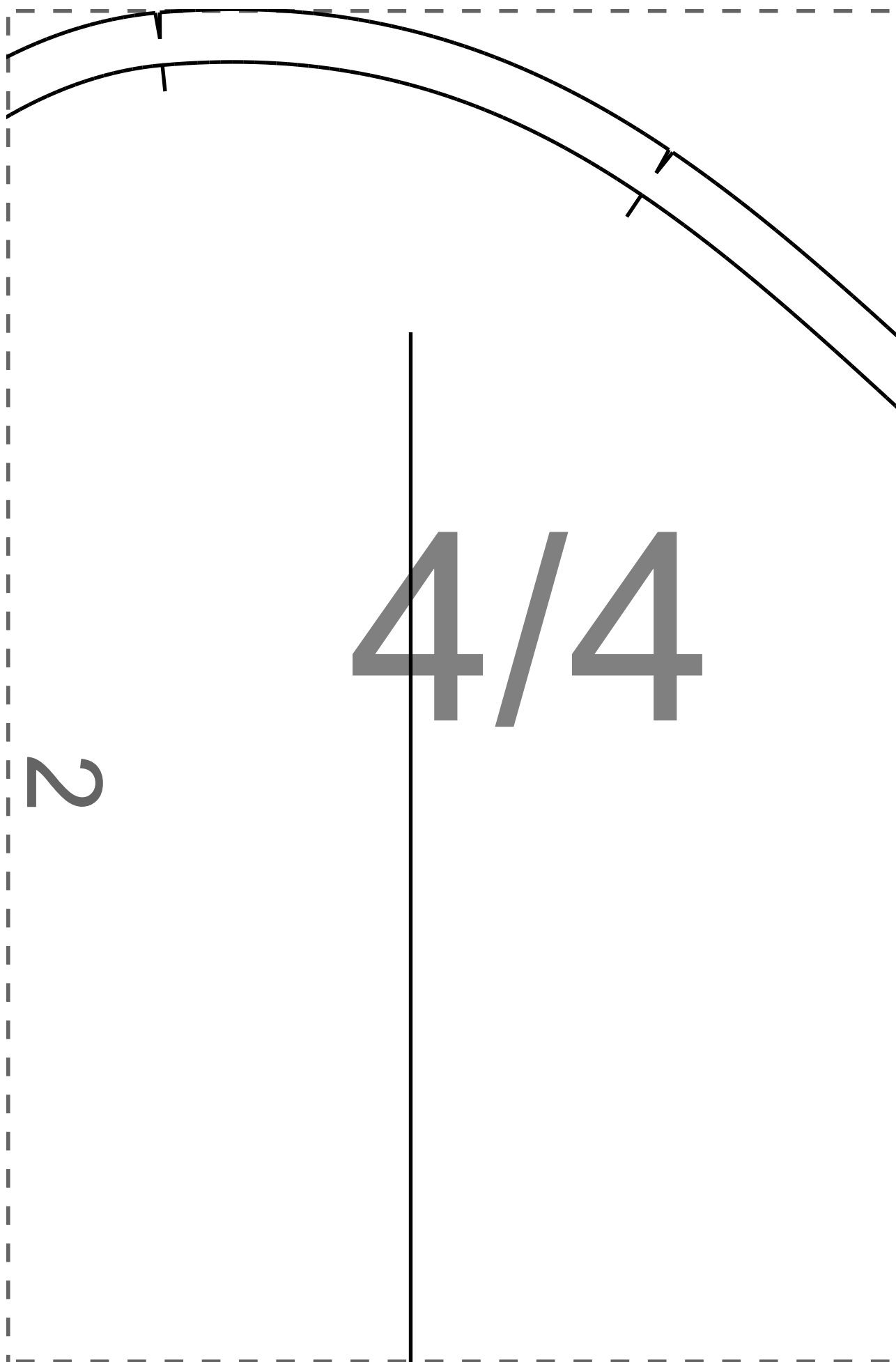


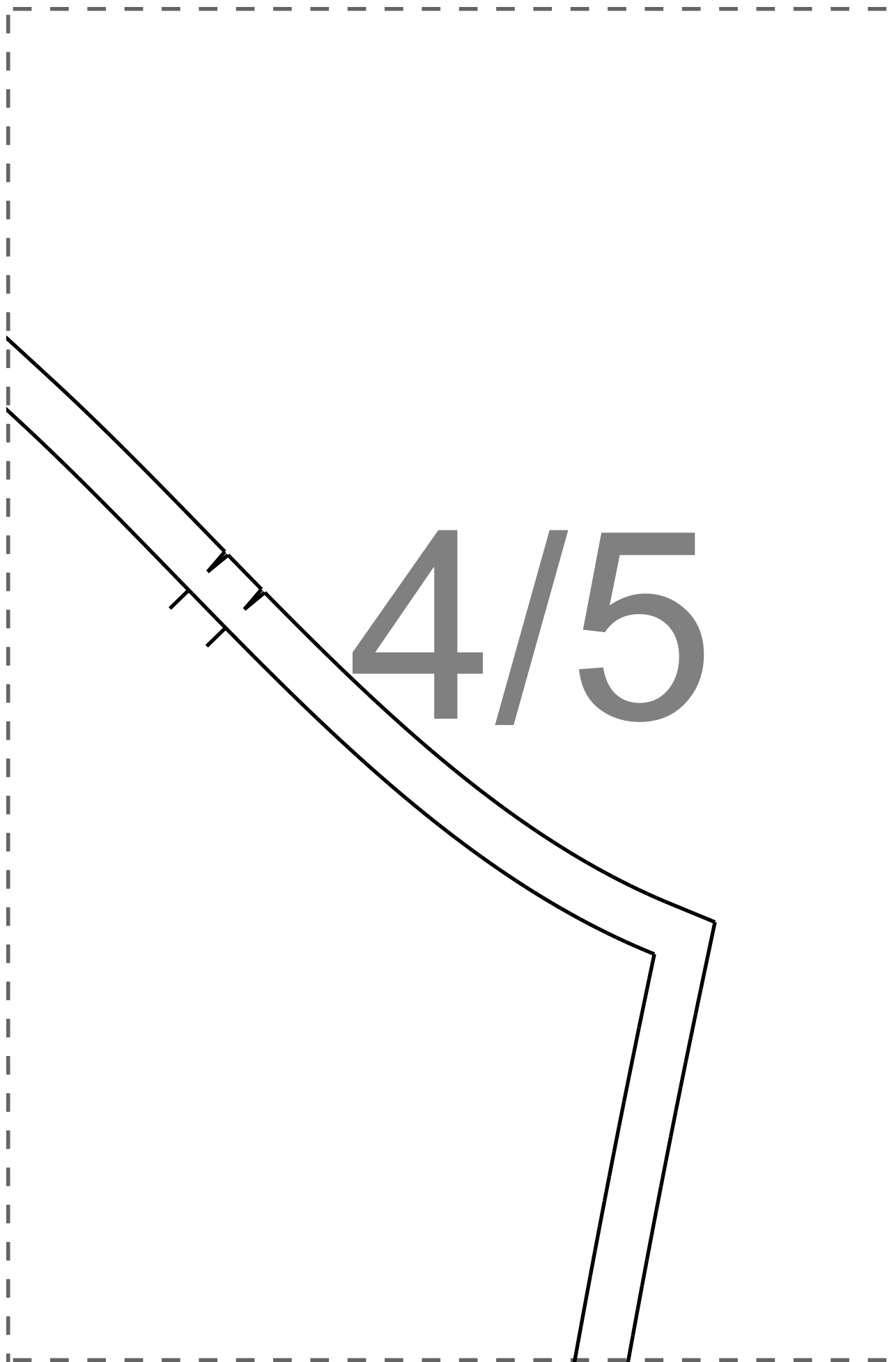
SLEEVE

MAIN FABRIC: Cut 2

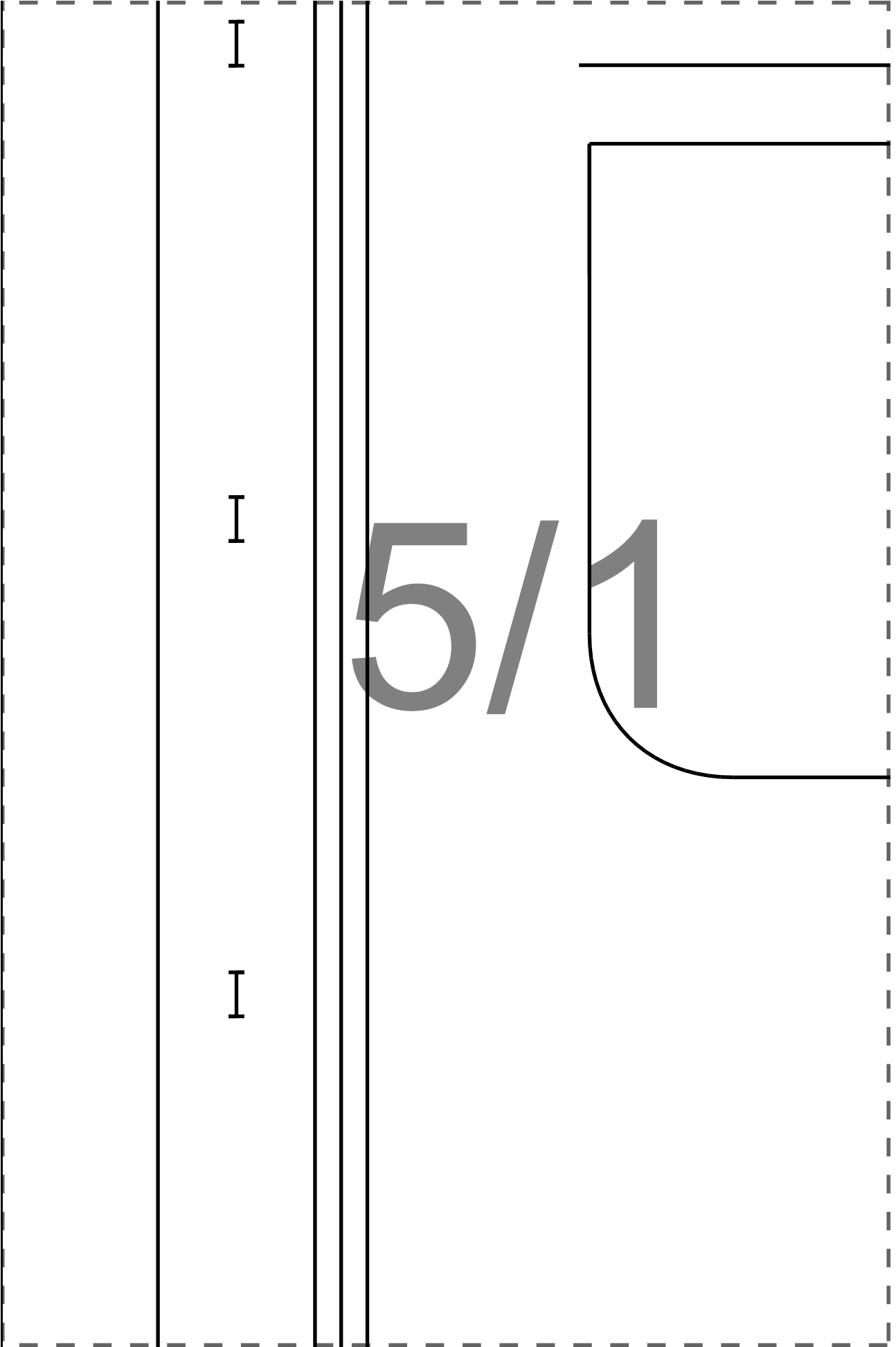
4/3

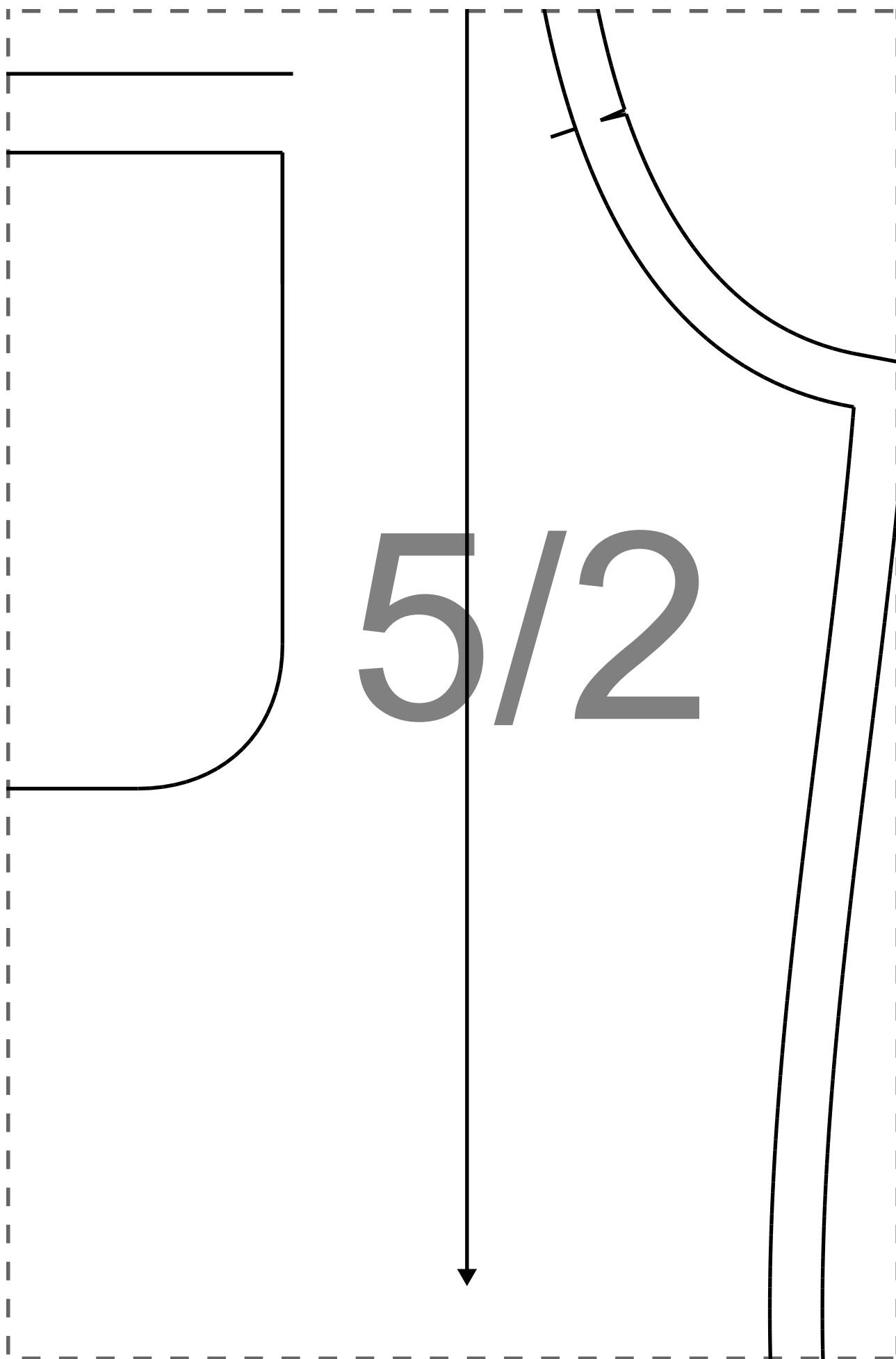


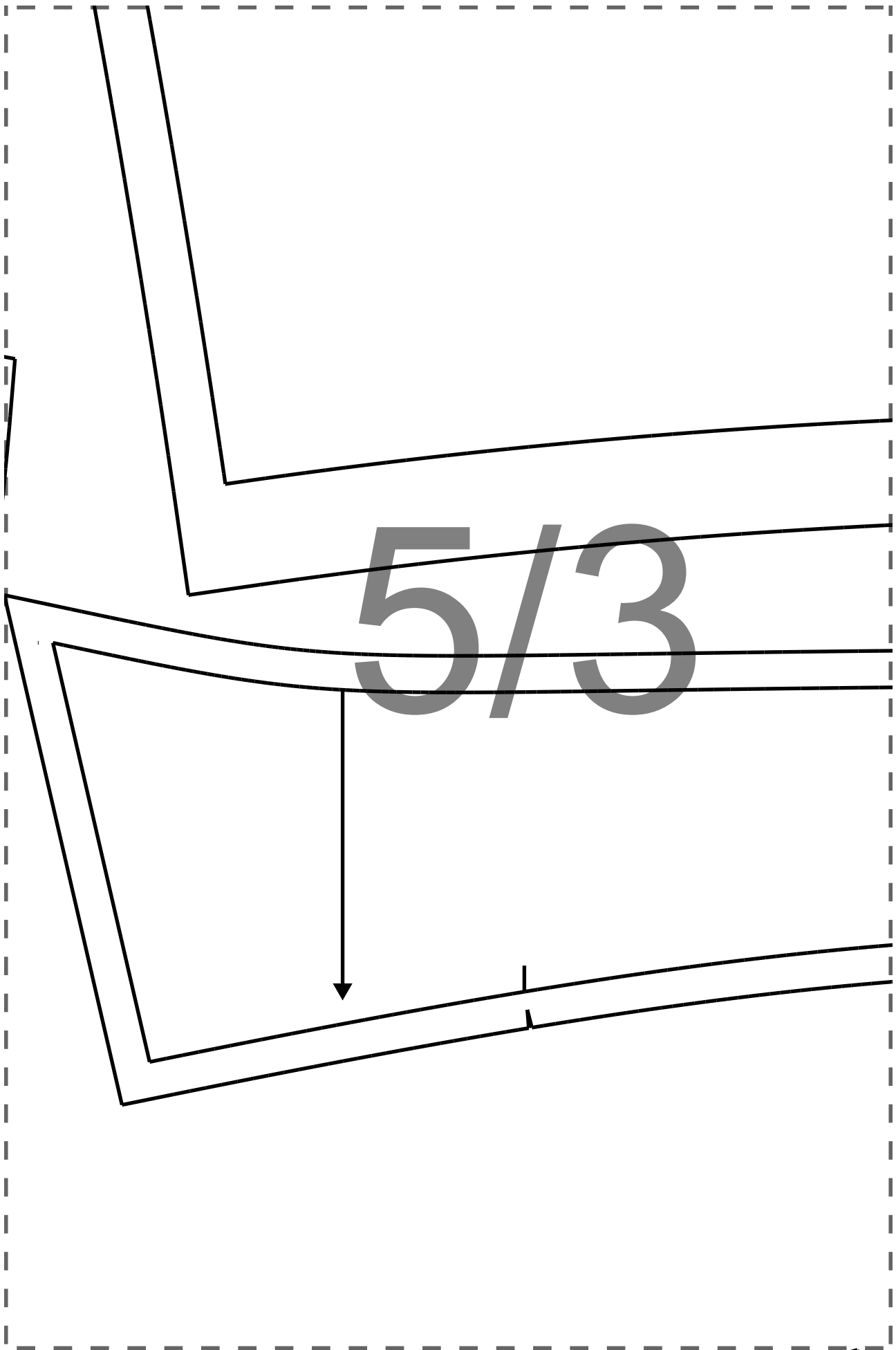


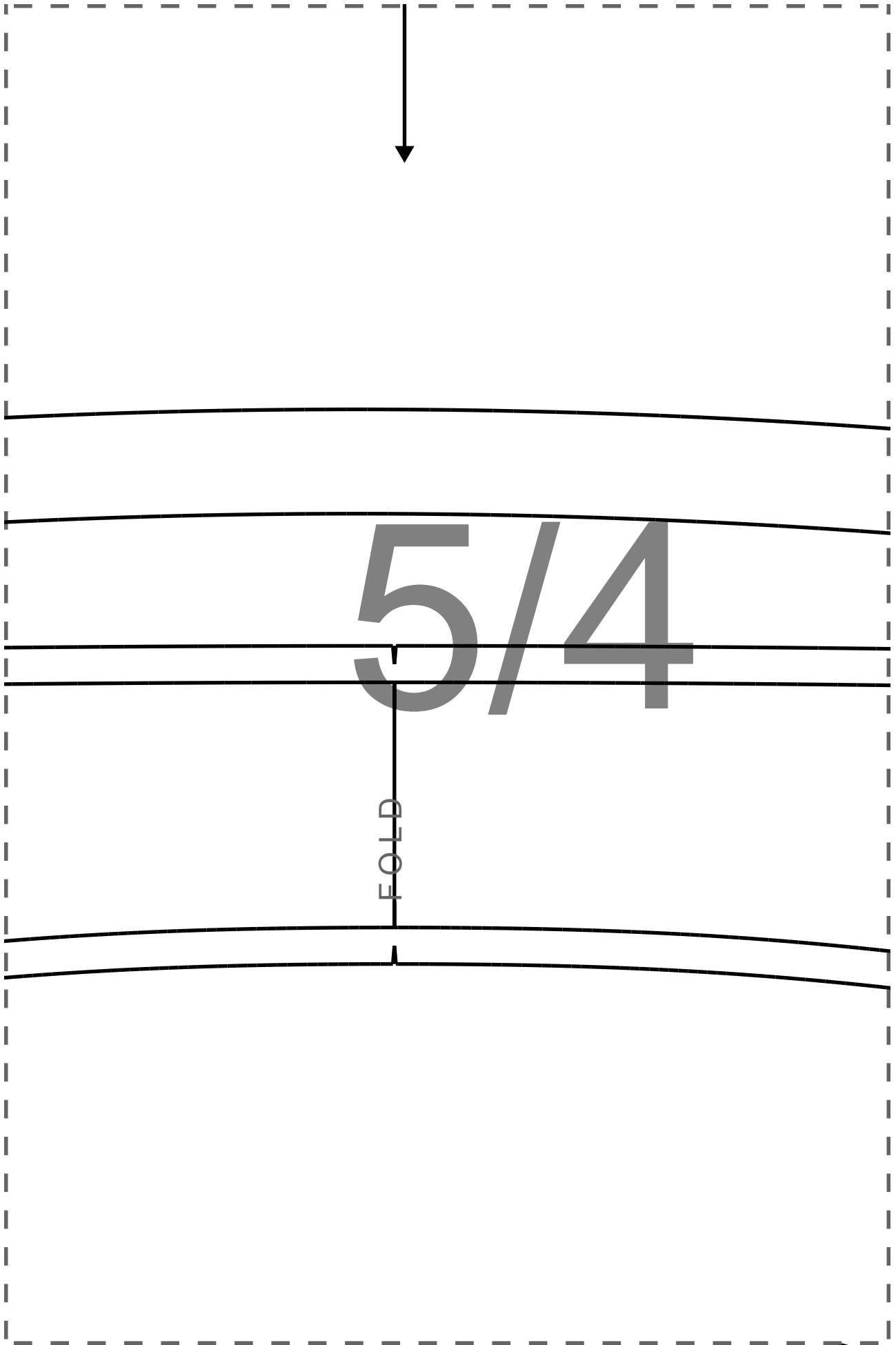


4/5





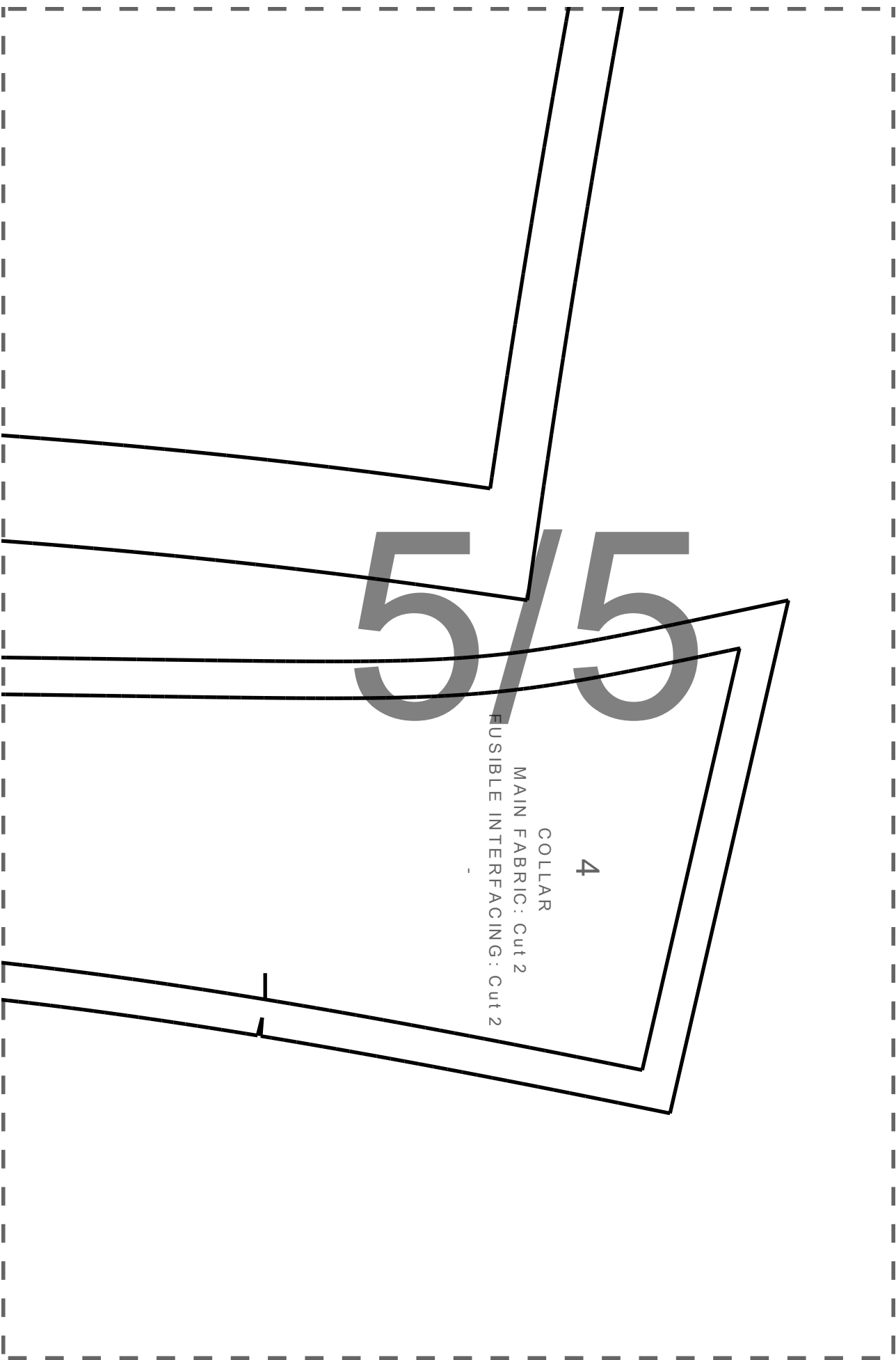


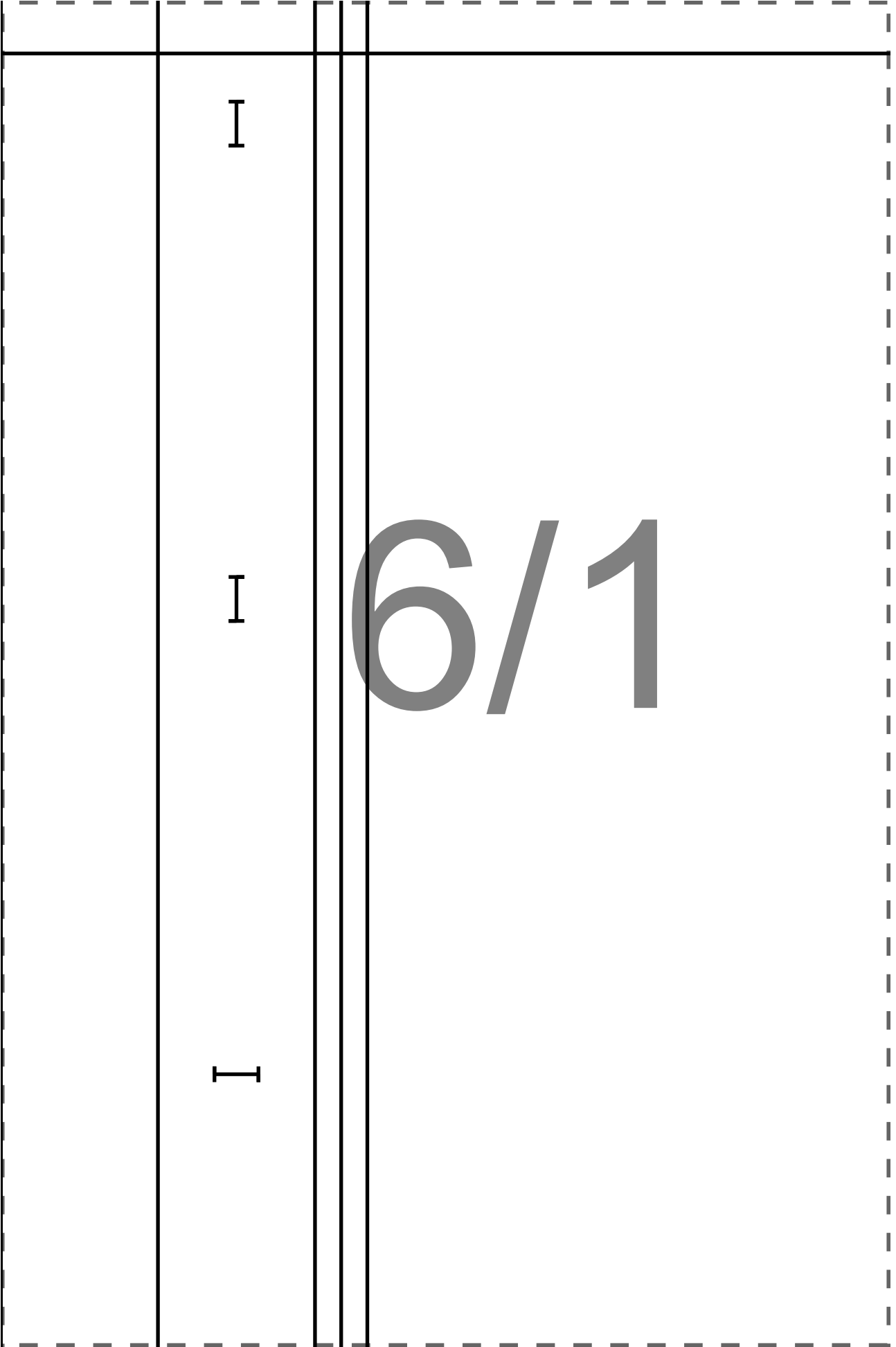


5/5

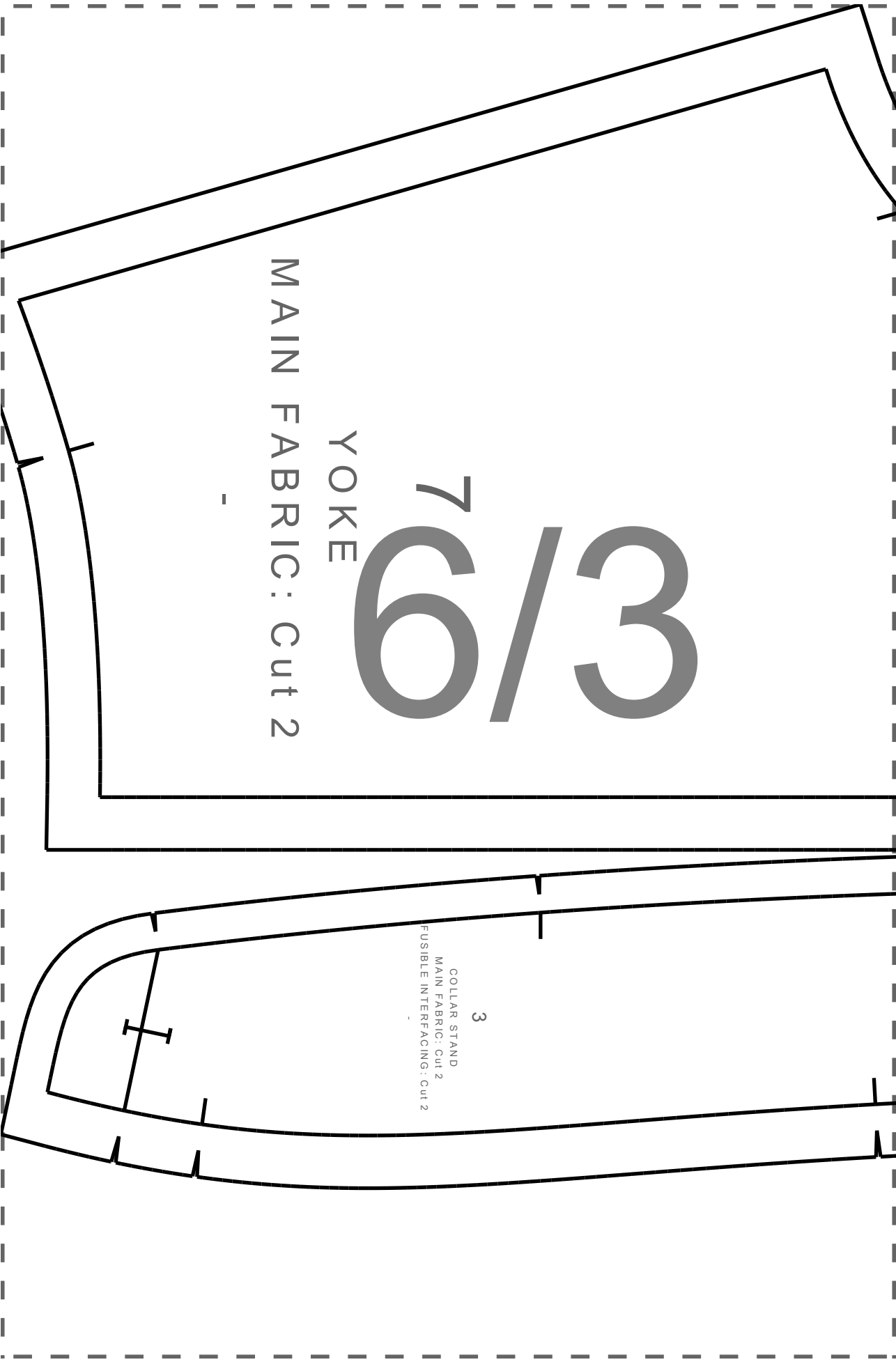
4

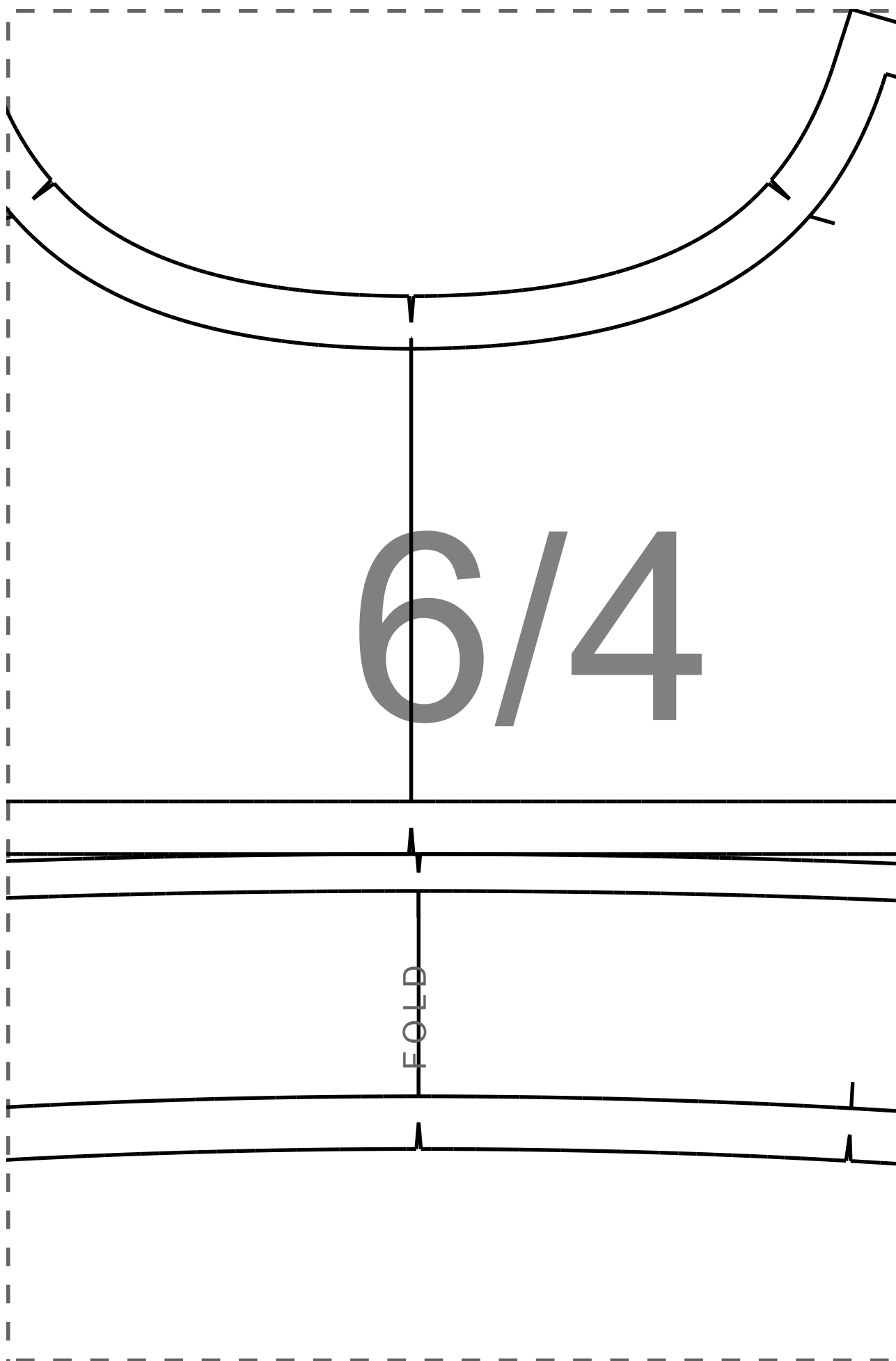
COLLAR
MAIN FABRIC: Cut 2
FUSIBLE INTERFACING: Cut 2

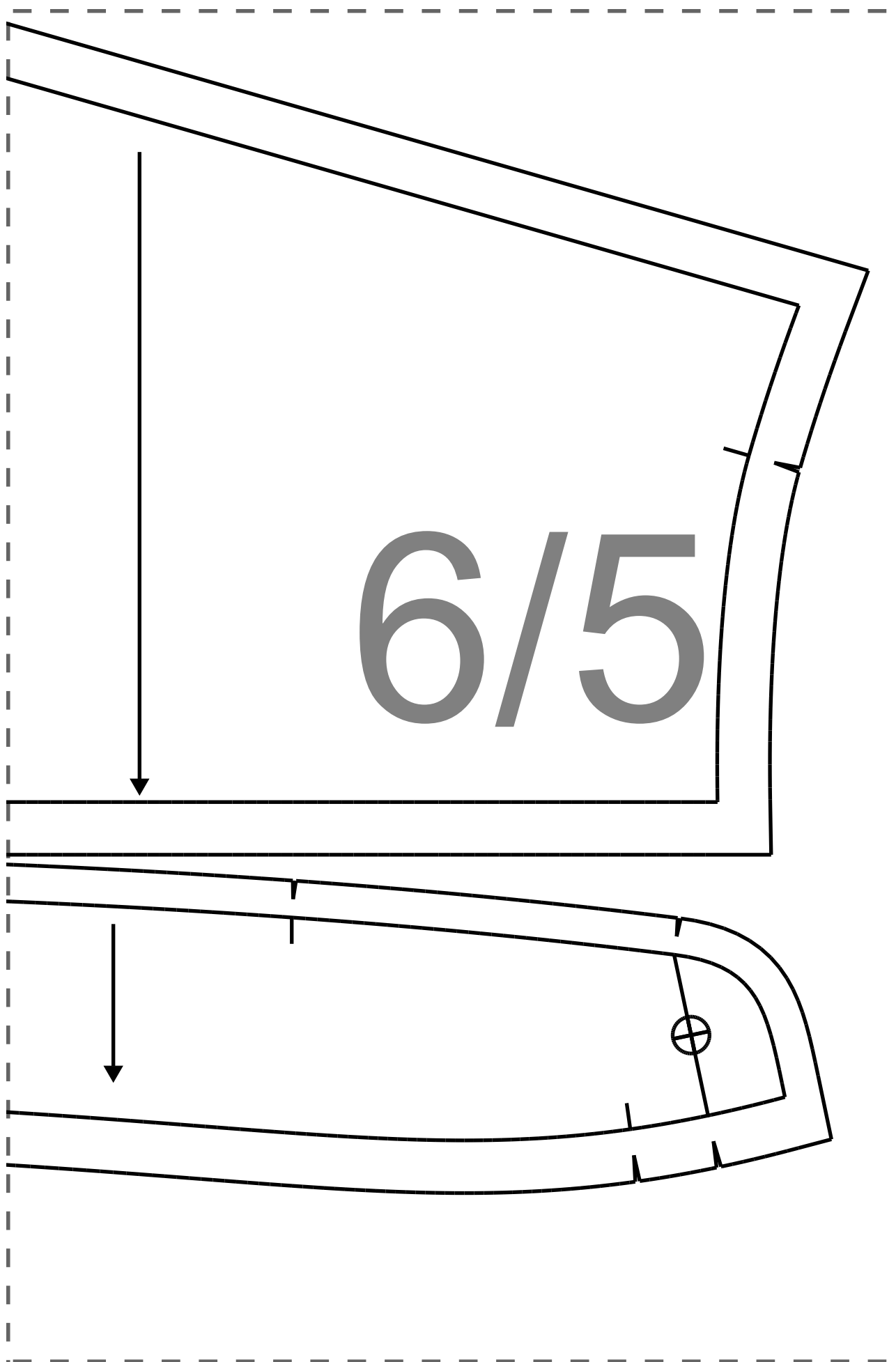


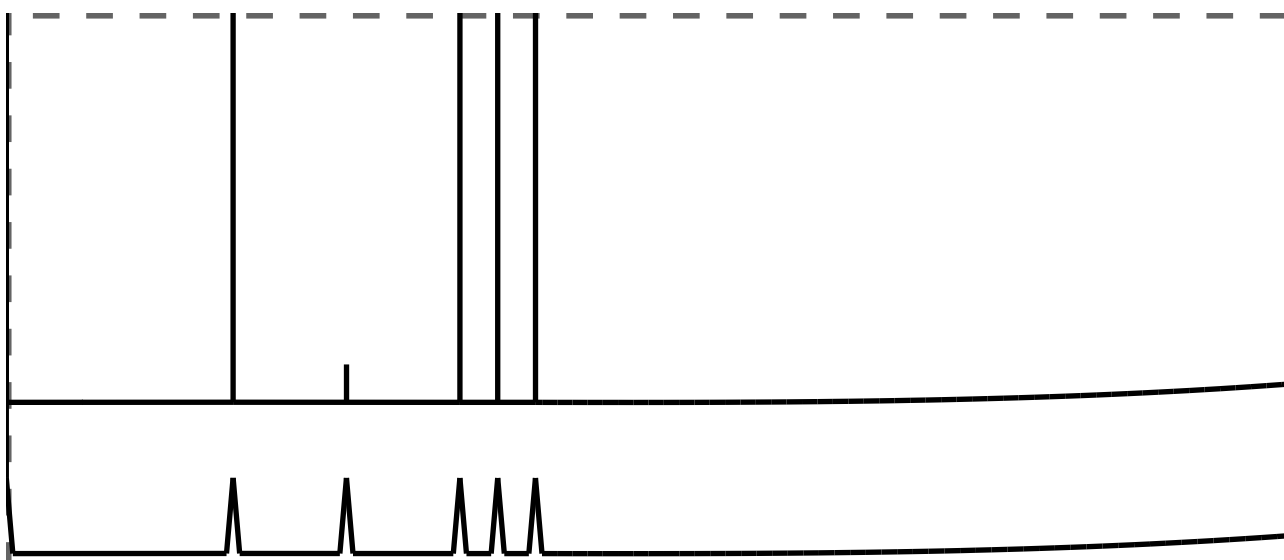


6/2









7/1



7/2

7/3