



Print this Calibration Test page first!

Size: Height: 170.00, Bust: 90.00, Waist: 68.50, Hips: 95.00
Pattern Name: - Tamanho 42

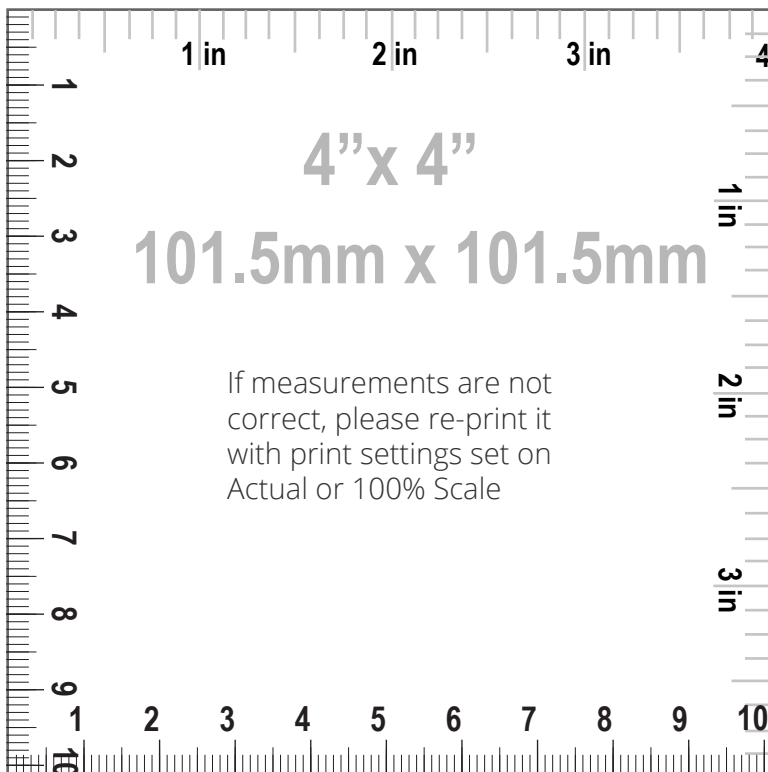
Notes

HOW TO PRINT



Printing

1. Once your Calibration Test Page has been printed, measure the 4"x 4" (10cm) scale box with a ruler. If the lengths match, you can confidently print your pattern. If the rulers do not match, set your print settings to 100% or Actual and retry.



Cutting

Your printouts will always have a dashed border to perfectly match your sheets. Cut off the right edge of each page. Be careful not to cut beyond the dashed mark, otherwise your patterns will not align accurately.



Taping

1. Group each sheet by the second number marked on each page i.e. in a group 1, there are: 1/1, 2/1, 3/1, 4/1, etc. In a group 2: 1/2, 2/2 etc.
2. Place page 1/1 on top of the page 2/1, overlapping the right side edge. Match corners and crosses and secure with a pin or tape. Then use a scotch tape to permanently attach the sheets together.



Pattern Name: - Tamanho 42

Seam Allowance: 1.00 (0.39 in)

Pattern pieces:

- 1, FRONT, MAIN FABRIC: Cut 1
- 2, BACK, MAIN FABRIC: Cut 2
- 3, SLEEVE, MAIN FABRIC: Cut 2

- 4, FRONT NECK FACING, MAIN FABRIC: Cut 1,
FUSIBLE INTERFACING: Cut 1
- 5, BACK NECK FACING, MAIN FABRIC: Cut 2,
FUSIBLE INTERFACING: Cut 2

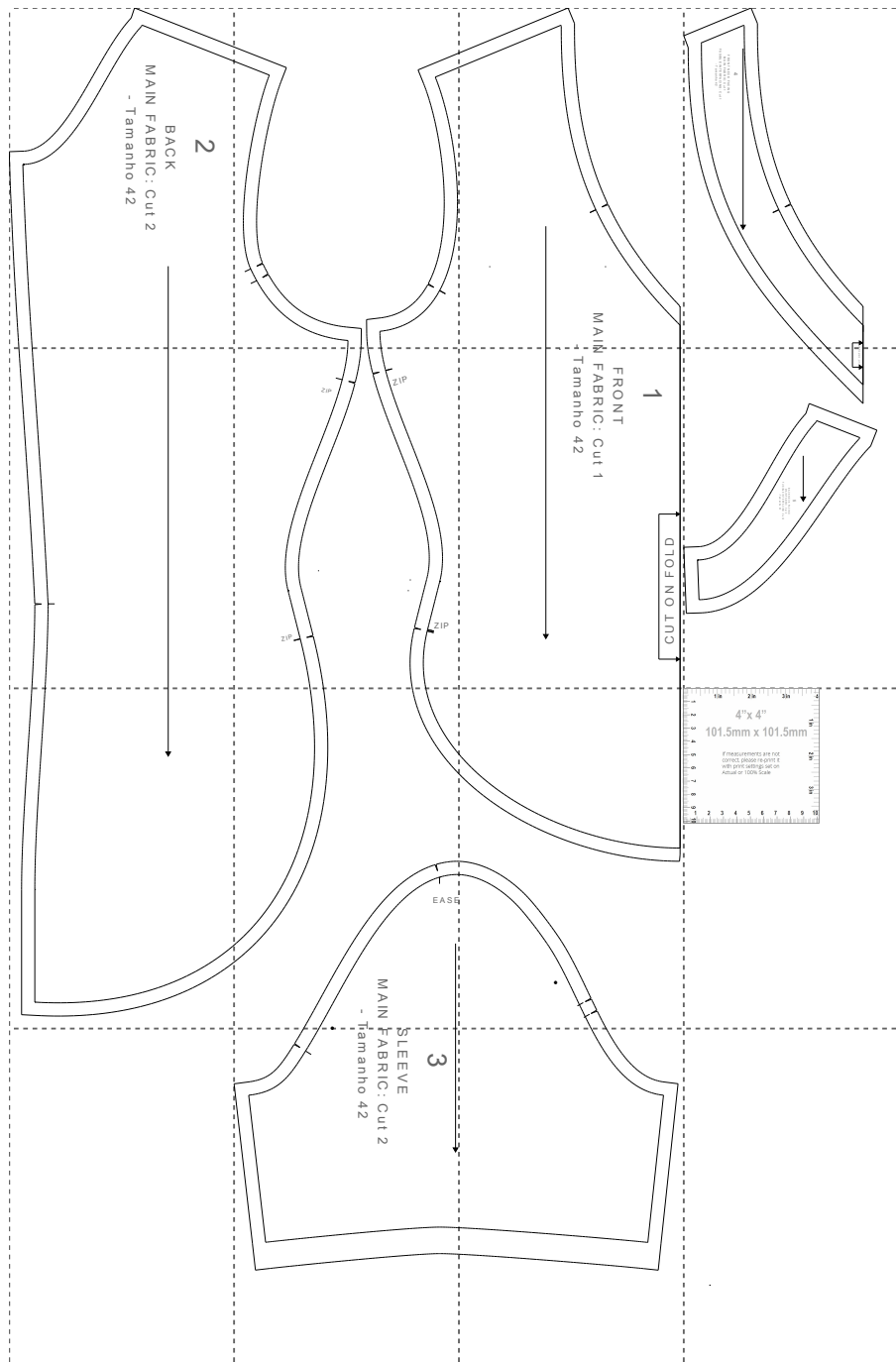
Pattern Specs (Circumferences are divided by 2):

- 1. Side invisible zipper length 23.00 (9.06 in)
- 2. Front length from HPS to hem 62.18 (24.48 in)
- 3. Across chest 46.58 (18.34 in)
- 4. Center front length to hem 39.50 (15.55 in)
- 5. Center back length to hem 63.38 (24.95 in)
- 6. Across front 33.77 (13.30 in)
- 7. Across back 32.10 (12.64 in)
- 8. Across shoulders 37.21 (14.65 in)
- 9. Side seam 23.42 (9.22 in)
- 10. Waist 36.29 (14.29 in)
- 11. Hips 48.55 (19.11 in)
- 12. Hemline sweep 39.55 (15.57 in)
- 13. Armhole length front 22.13 (8.71 in)
- 14. Armhole length back 24.55 (9.67 in)
- 15. Neck opening 17.94 (7.06 in)
- 16. Neckline length 78.96 (31.09 in)
- 17. Front neck drop 22.68 (8.93 in)
- 18. Back neck drop 10.51 (4.14 in)
- 19. Shoulder width 10.30 (4.06 in)
- 20. Sleeve length 26.39 (10.39 in)
- 21. Sleeve cap length 47.71 (18.78 in)
- 22. Armhole length 46.67 (18.37 in)
- 23. Sleeve upper arm width 30.90 (12.17 in)
- 24. Sleeve opening 28.92 (11.39 in)



Paper Size: A4;

Print Actual Size (100% Scale);



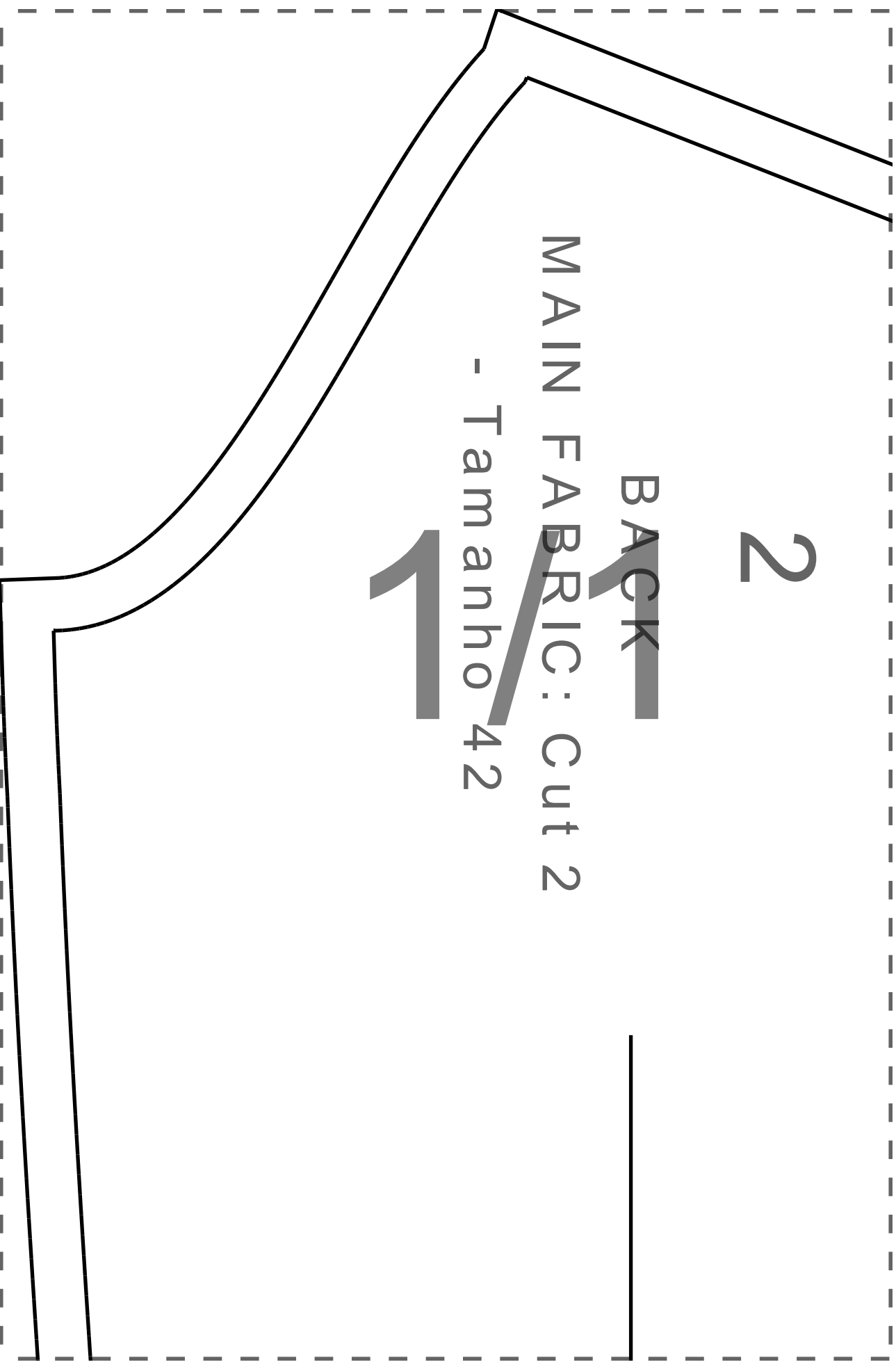
2

BACK

MAIN FABRIC: Cut 2

- Tamanho 42

1

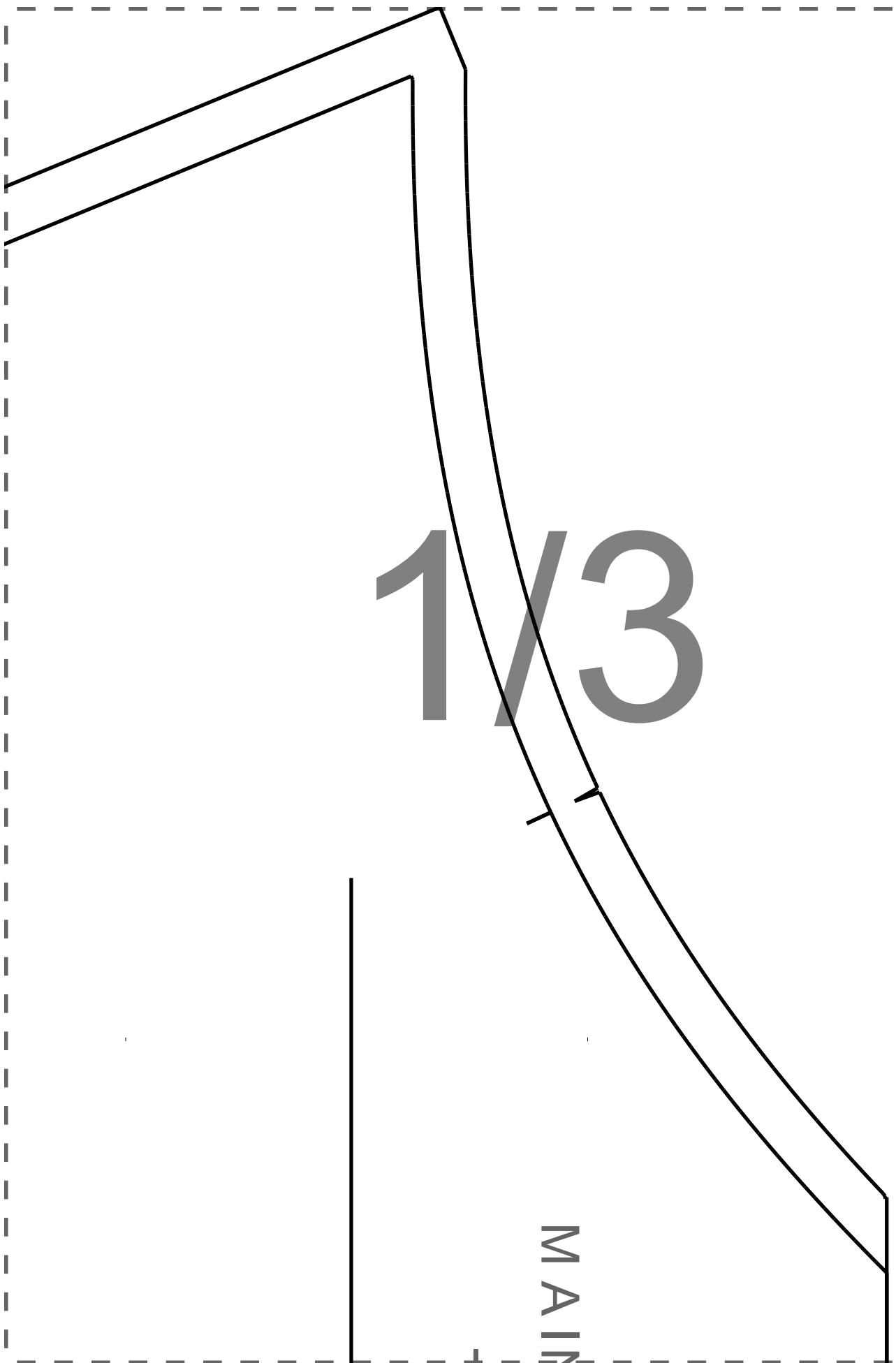




1/2

1/3

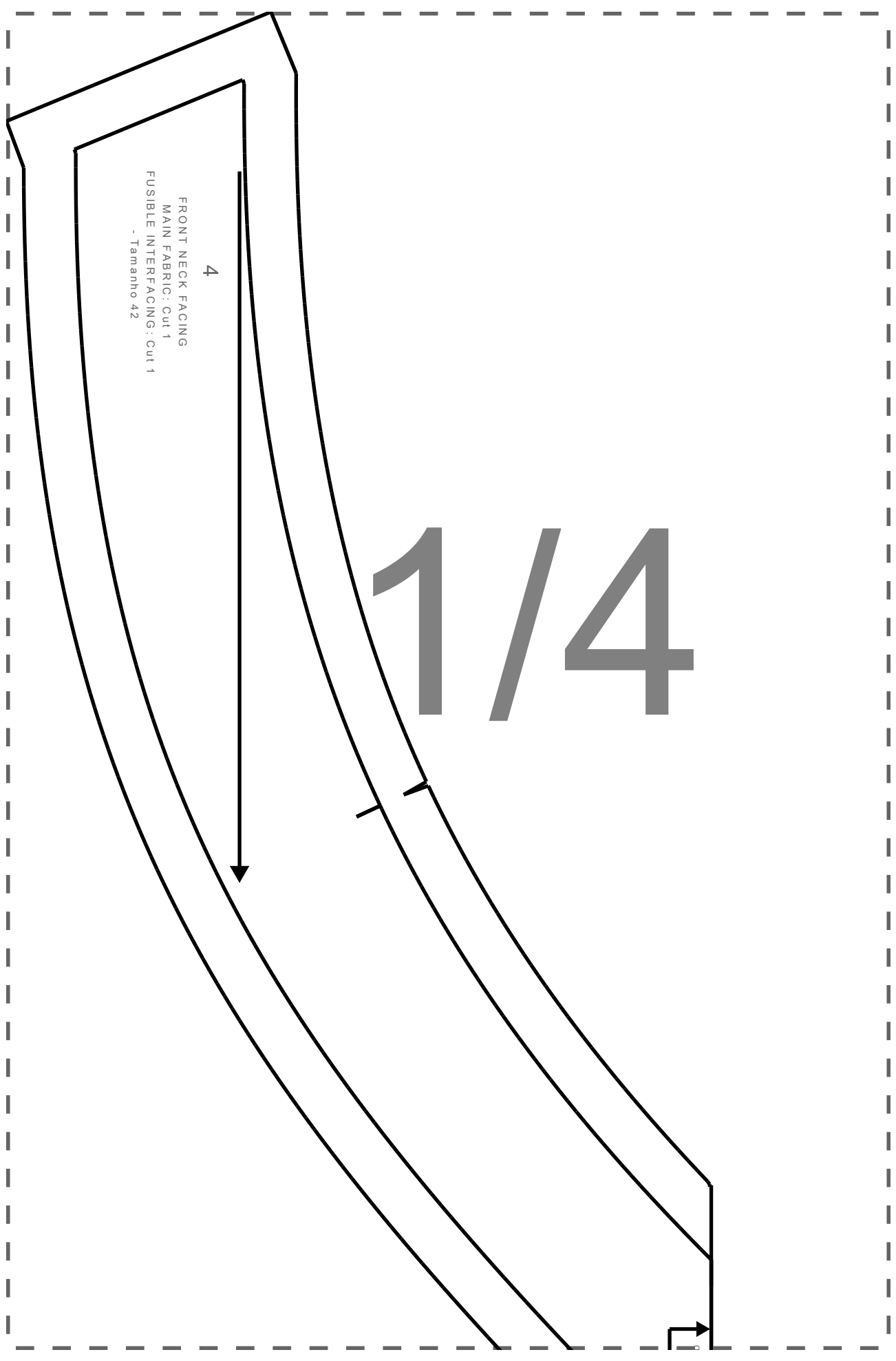
MAIN



1/4

4

FRONT NECK FACING
MAIN FABRIC : Cut 1
FUSIBLE INTERFACING : Cut 1
- Tamanho 42



2/1

2/2

ZIP

ZIP

ZIP

ZIP

1

FRONT

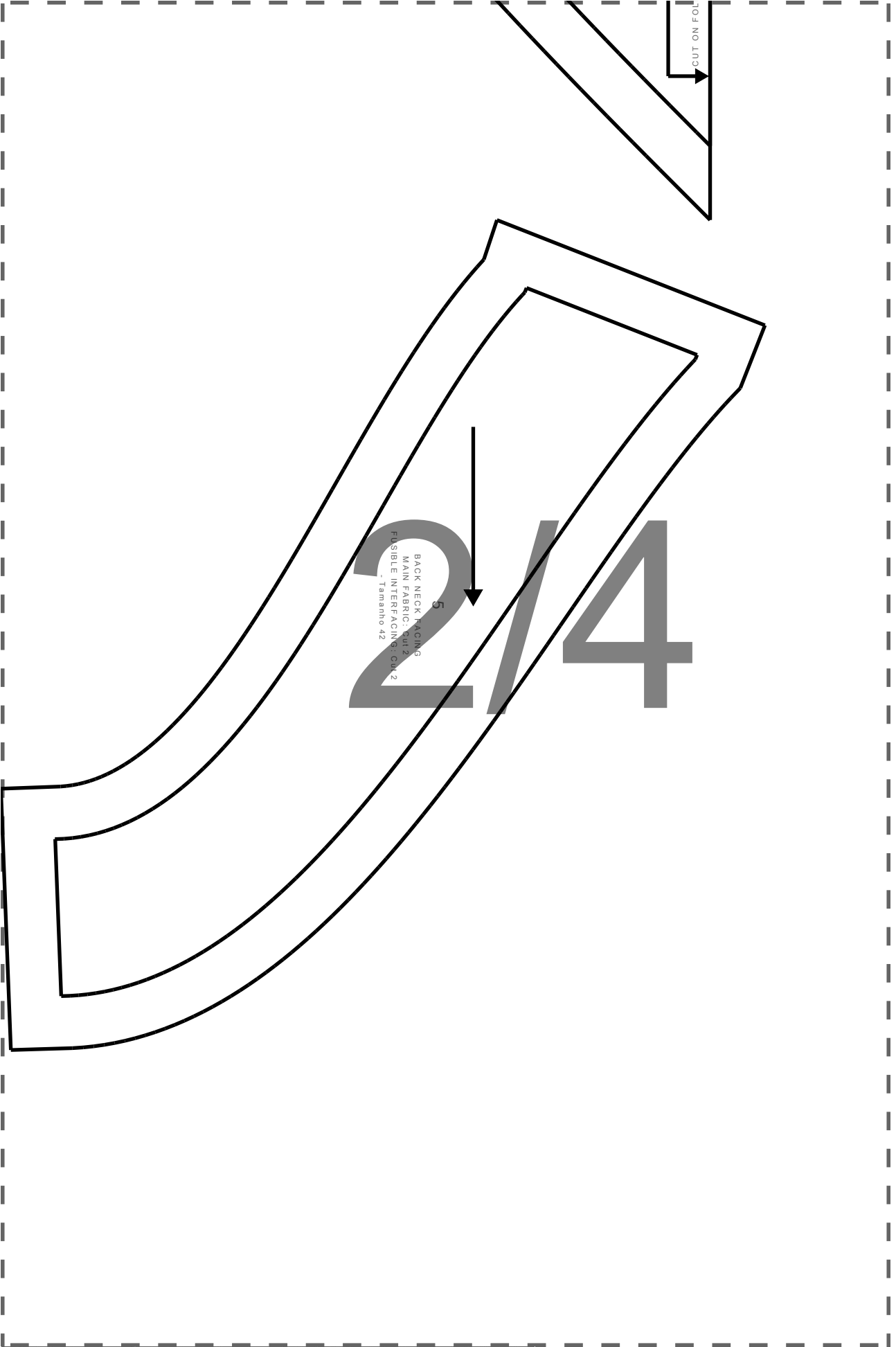
FABRIC: Cut 1

Tamanho 42

2/3

CUT ON FOLD





BACK NECK FACING
MAIN FABRIC: CUT 2
FUSIBLE INTERFACING: CUT 2

5

CUT ON FOLD

3/1

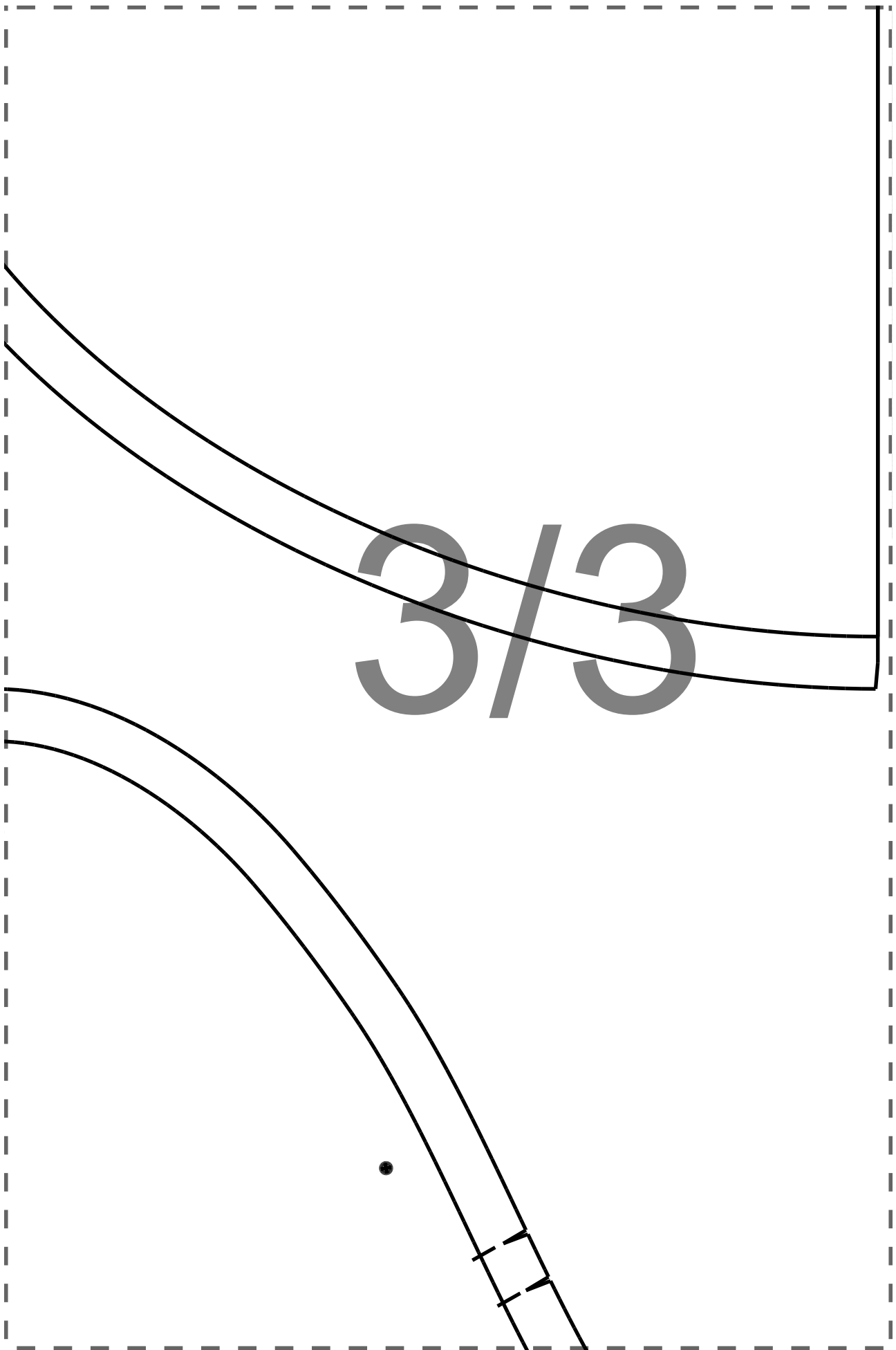


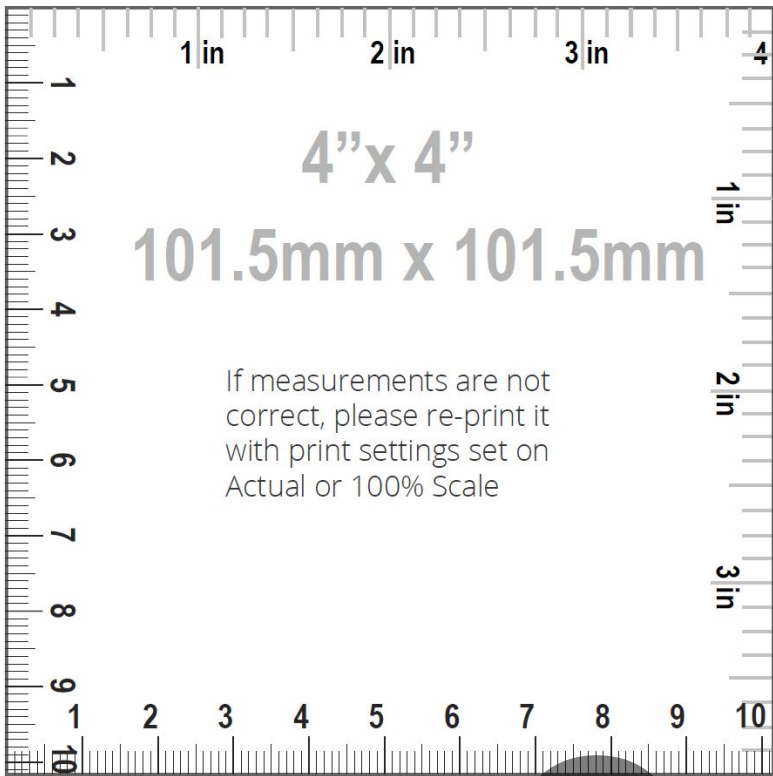
3/2

EASE

MAIN

-
T





3/4

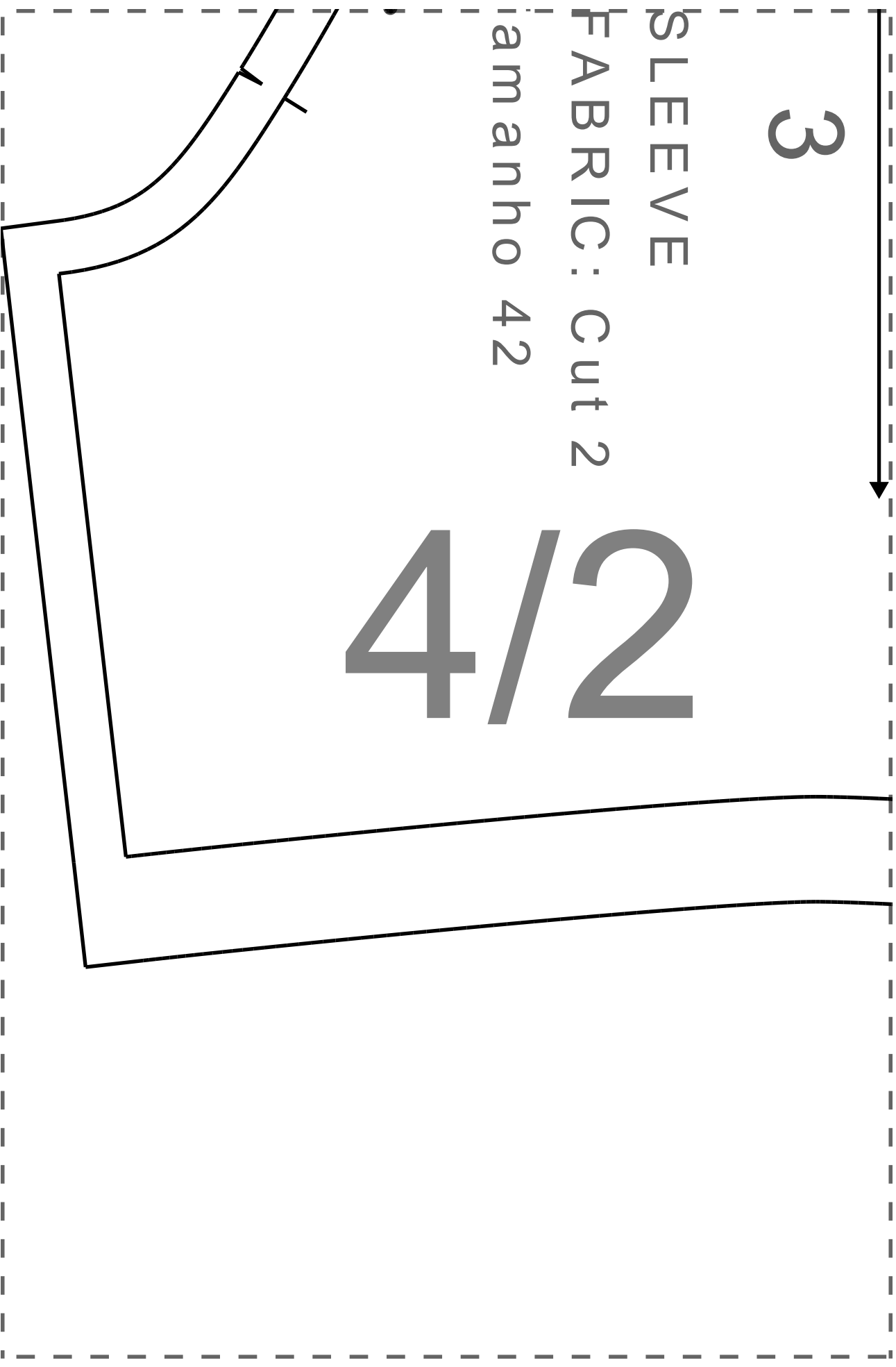
3

SLEEVE

FABRIC: Cut 2

am anho 42

4/2





4/3

4/4