



Print this Calibration Test page first!

Size: Height: 127.00, Bust: 62.90, Waist: 58.40, Hips: 66.70
Pattern Name: -

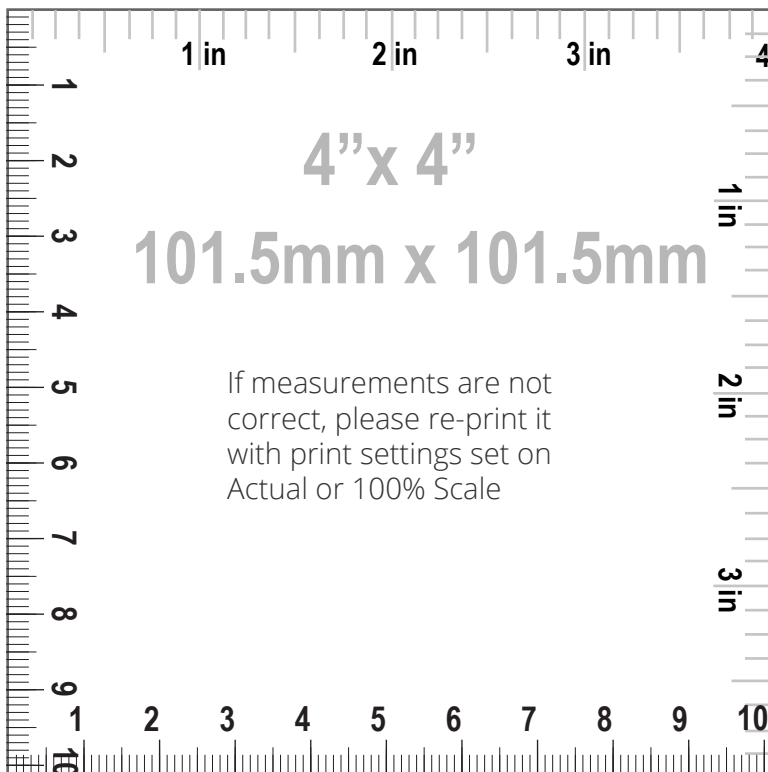
Notes

HOW TO PRINT



Printing

1. Once your Calibration Test Page has been printed, measure the 4"x 4" (10cm) scale box with a ruler. If the lengths match, you can confidently print your pattern. If the rulers do not match, set your print settings to 100% or Actual and retry.



Cutting

Your printouts will always have a dashed border to perfectly match your sheets. Cut off the right edge of each page. Be careful not to cut beyond the dashed mark, otherwise your patterns will not align accurately.



Taping

1. Group each sheet by the second number marked on each page i.e. in a group 1, there are: 1/1, 2/1, 3/1, 4/1, etc. In a group 2: 1/2, 2/2 etc.
2. Place page 1/1 on top of the page 2/1, overlapping the right side edge. Match corners and crosses and secure with a pin or tape. Then use a scotch tape to permanently attach the sheets together.



Pattern Name: -

Seam Allowance: 1.00 (0.39 in)

Pattern pieces:

- 1, FRONT, MAIN FABRIC: Cut 1
- 2, BACK, MAIN FABRIC: Cut 1
- 3, SLEEVE, MAIN FABRIC: Cut 2

- 4, NECK ENCLOSED BINDING, MAIN FABRIC: Cut 1

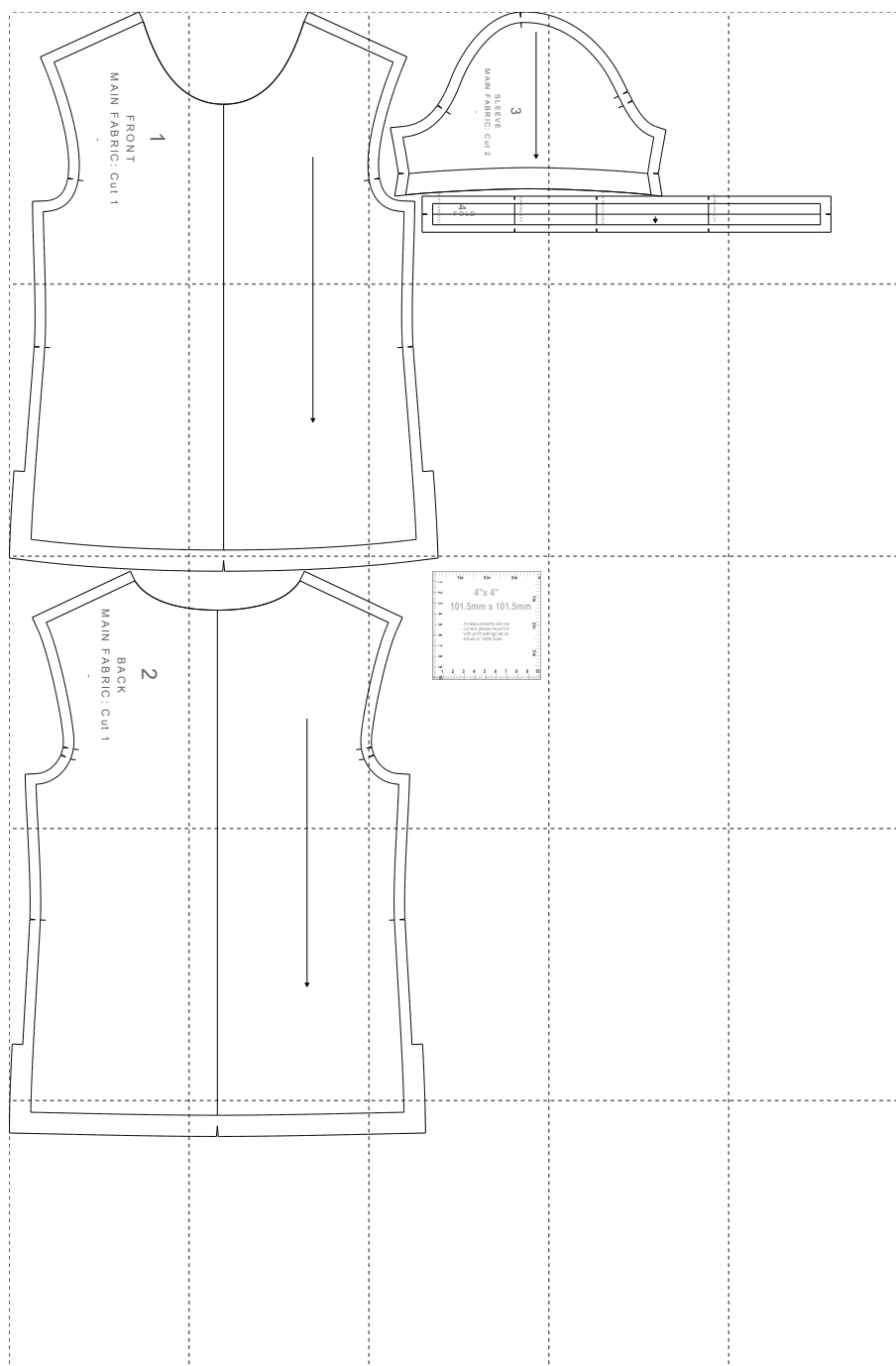
Pattern Specs (Circumferences are divided by 2):

- | | |
|--|--|
| 1. Front length from HPS to hem 50.61 (19.93 in) | 11. Front neck drop 7.81 (3.07 in) |
| 2. Center front length to hem 42.10 (16.57 in) | 12. Across back 26.24 (10.33 in) |
| 3. Center back length to hem 47.71 (18.78 in) | 13. Armhole front 16.39 (6.45 in) |
| 4. Armhole front 16.37 (6.44 in) | 14. Armhole back 17.53 (6.90 in) |
| 5. Armhole back 17.53 (6.90 in) | 15. Sleeve length 13.68 (5.39 in) |
| 6. Shoulder width 9.27 (3.65 in) | 16. Sleeve cap length 33.92 (13.35 in) |
| 7. Across shoulders 32.79 (12.91 in) | 17. Sleeve upper arm width 23.71 (9.33 in) |
| 8. Top side seam 31.01 (12.21 in) | 18. Sleeve opening 22.58 (8.89 in) |
| 9. Neckline length 40.66 (16.01 in) | |
| 10. Neck opening 15.58 (6.13 in) | |



Paper Size: A4;

Print Actual Size (100% Scale);

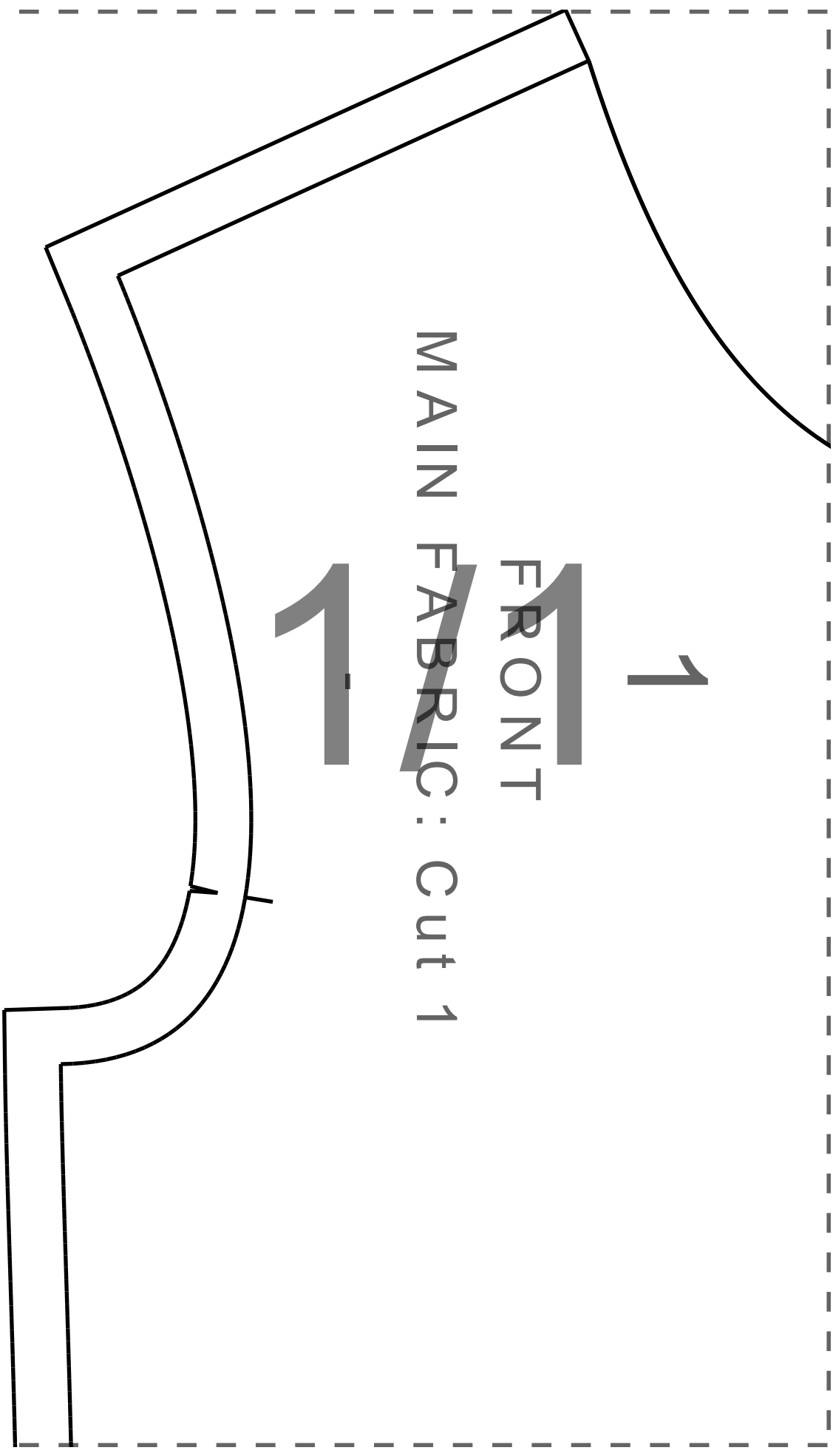


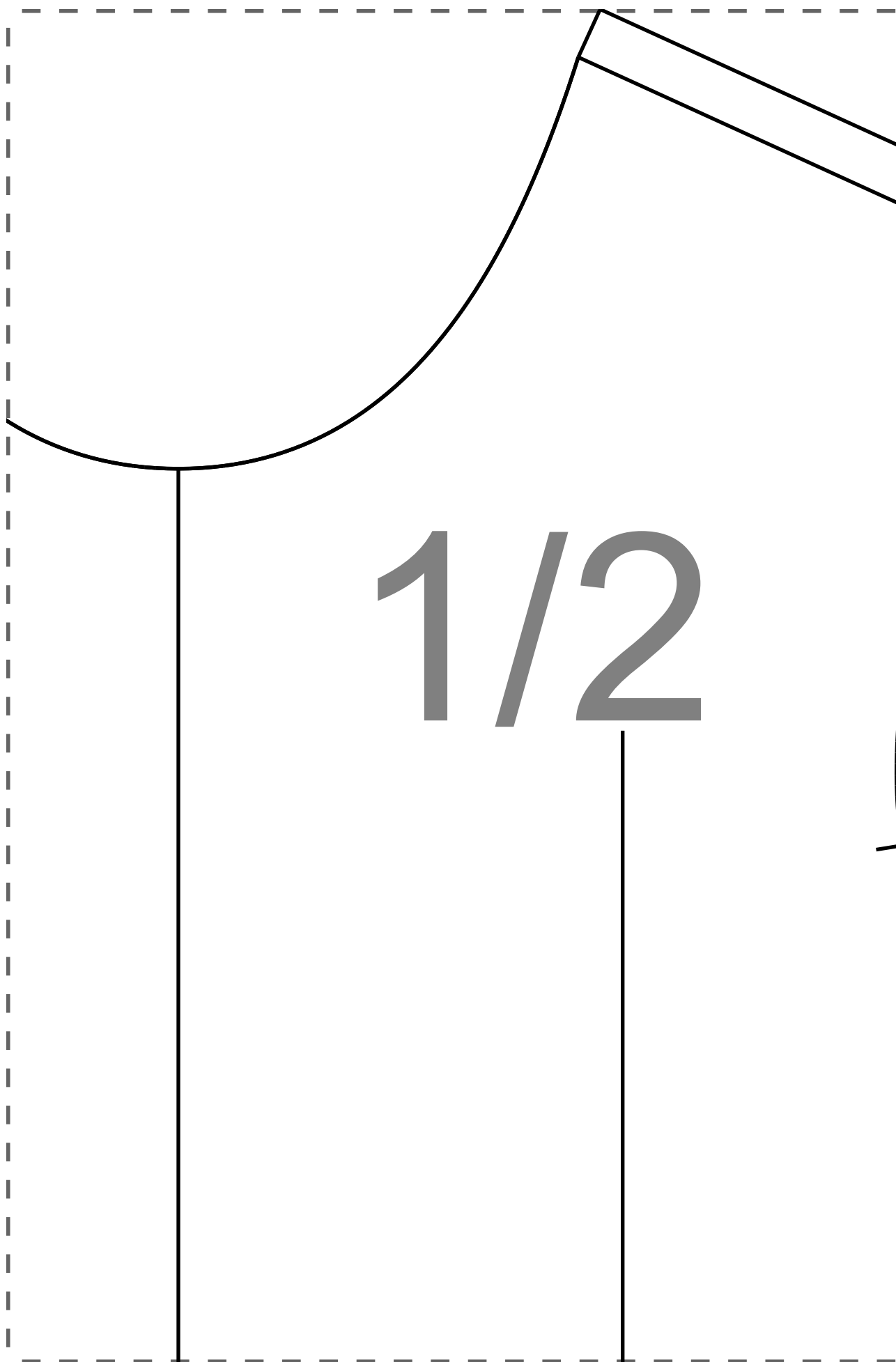
1

FRONT

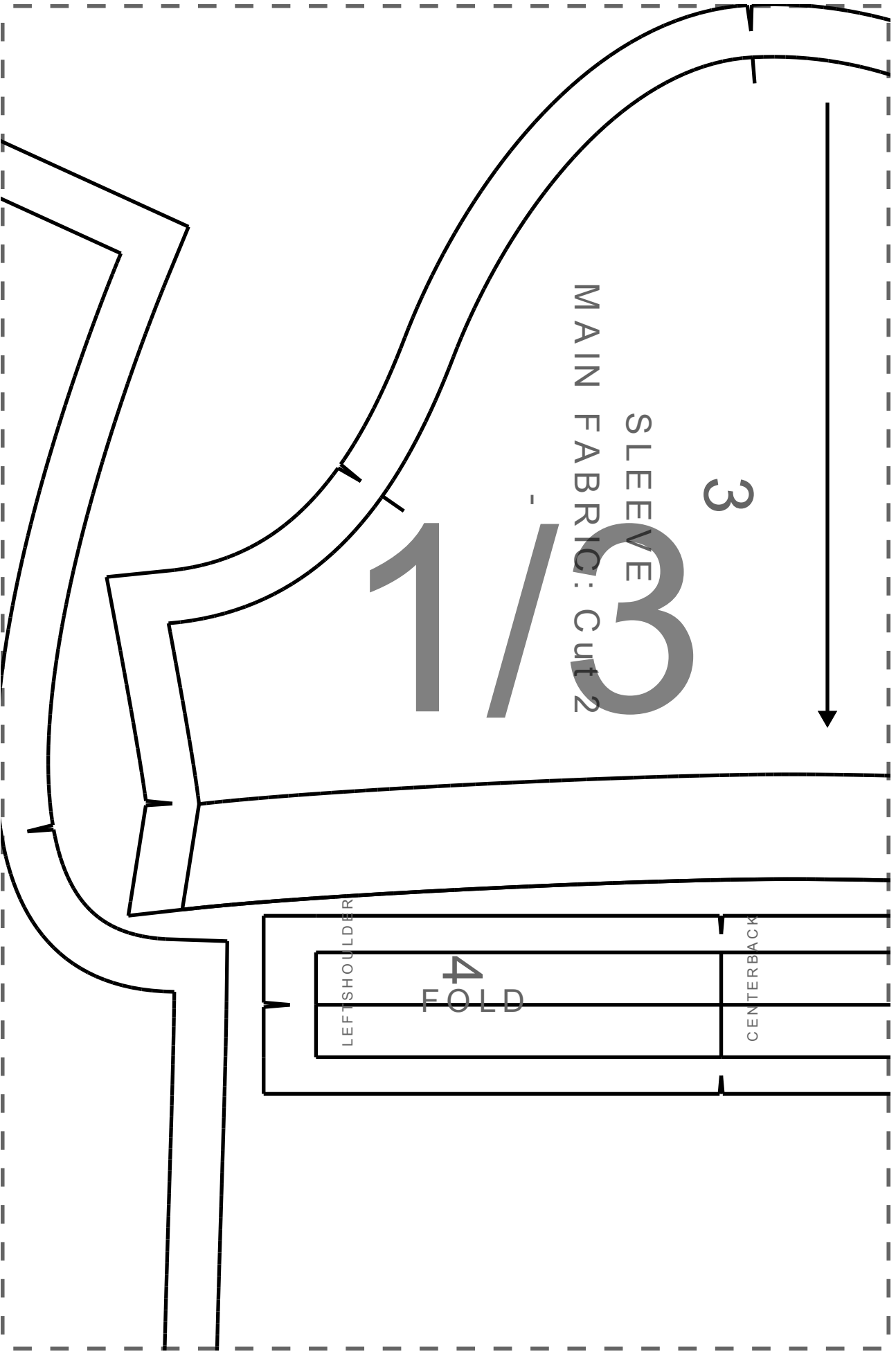
MAIN FABRIC : Cut 1

1





1/2



3

SLEEVE

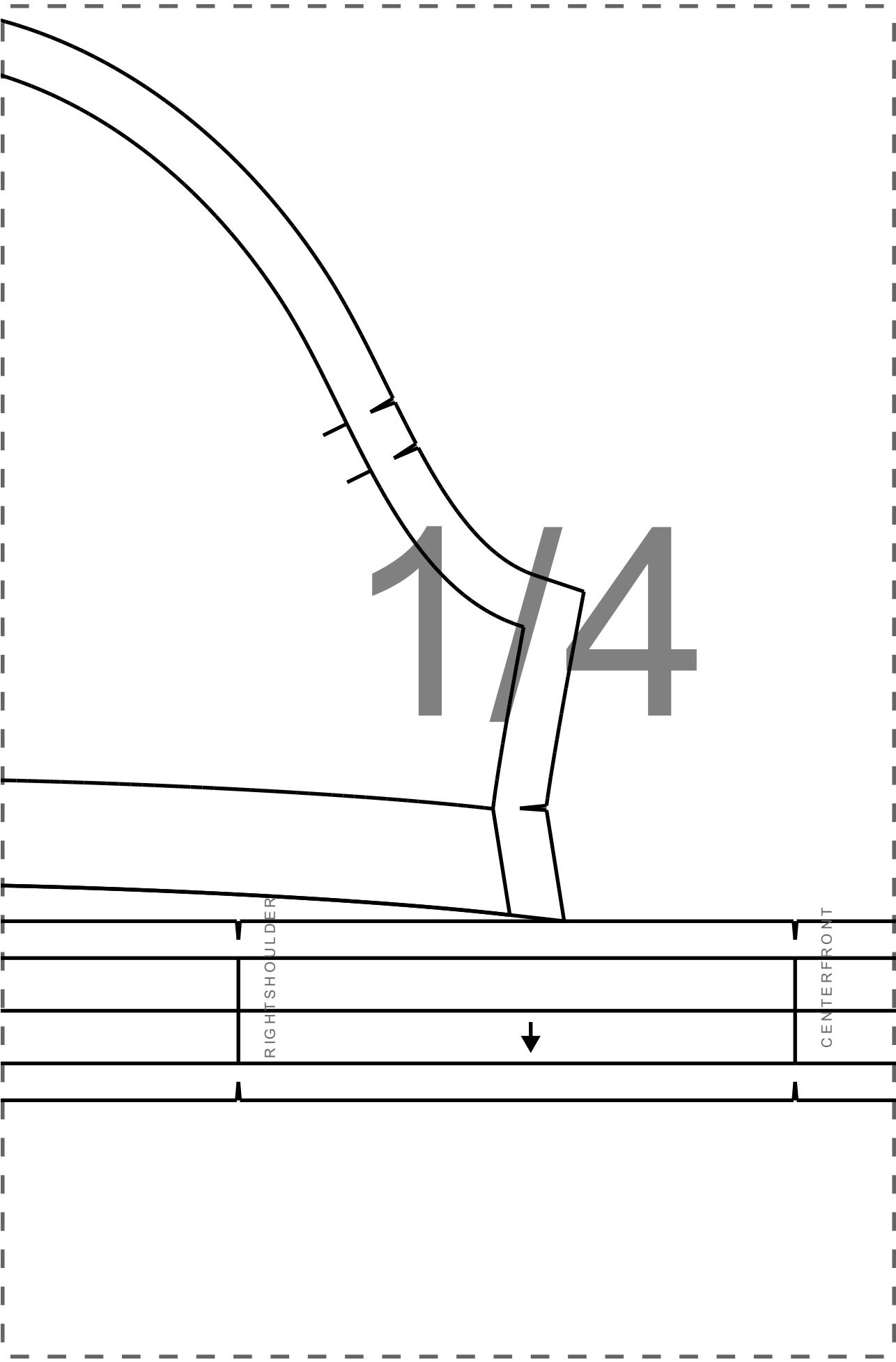
MAIN FABRIC: cut 2

1/3

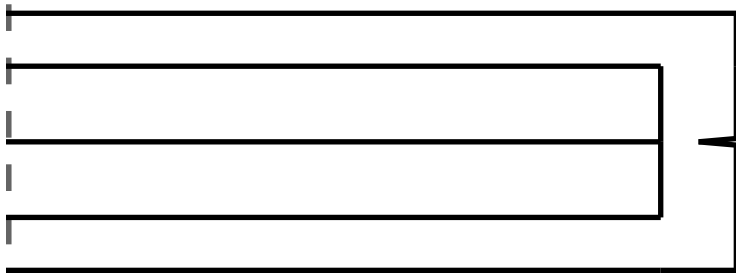
4
FOLD

LEFT SHOULDER

CENTER BACK

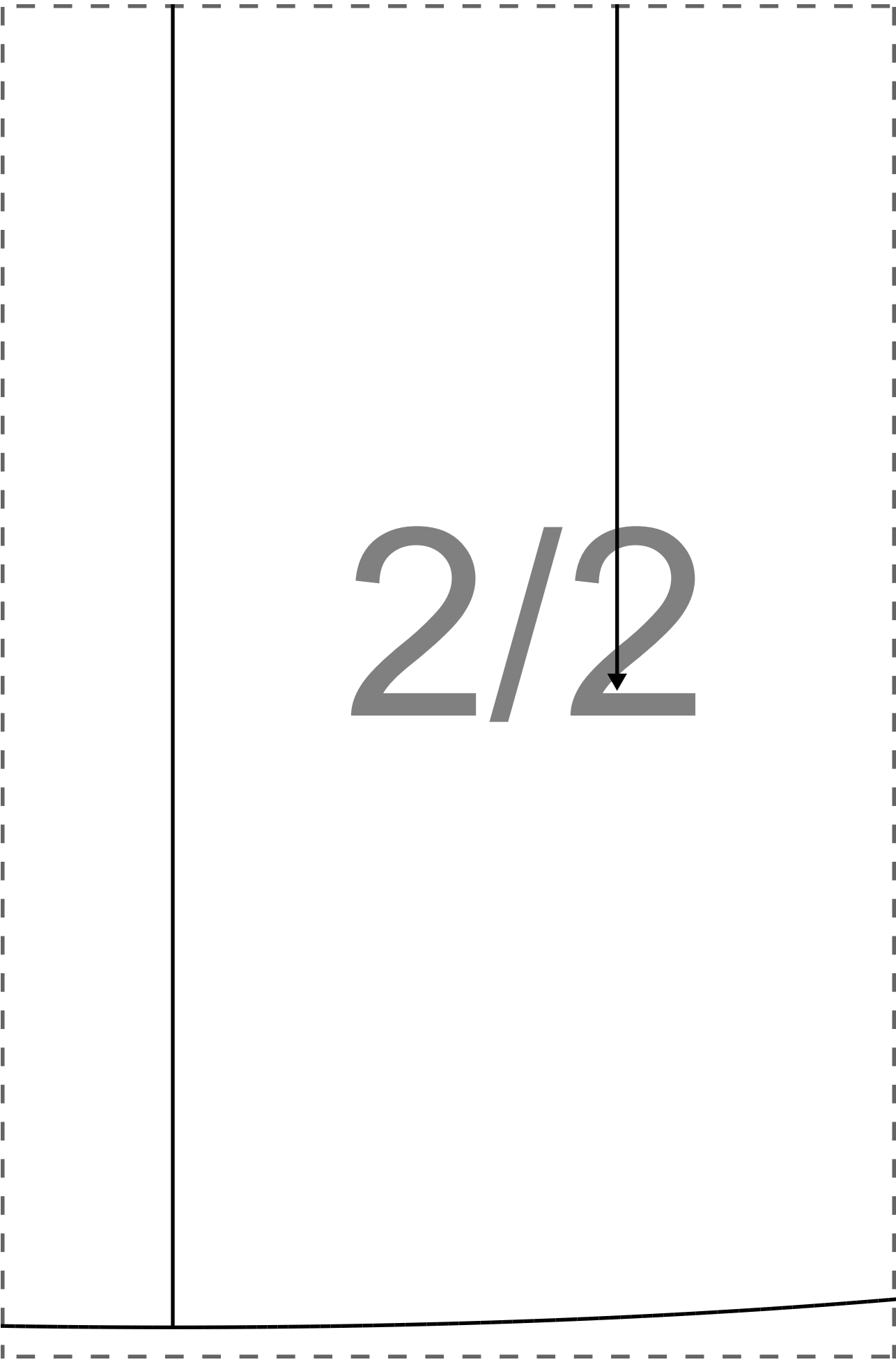


1/5





2/1



$2/2$

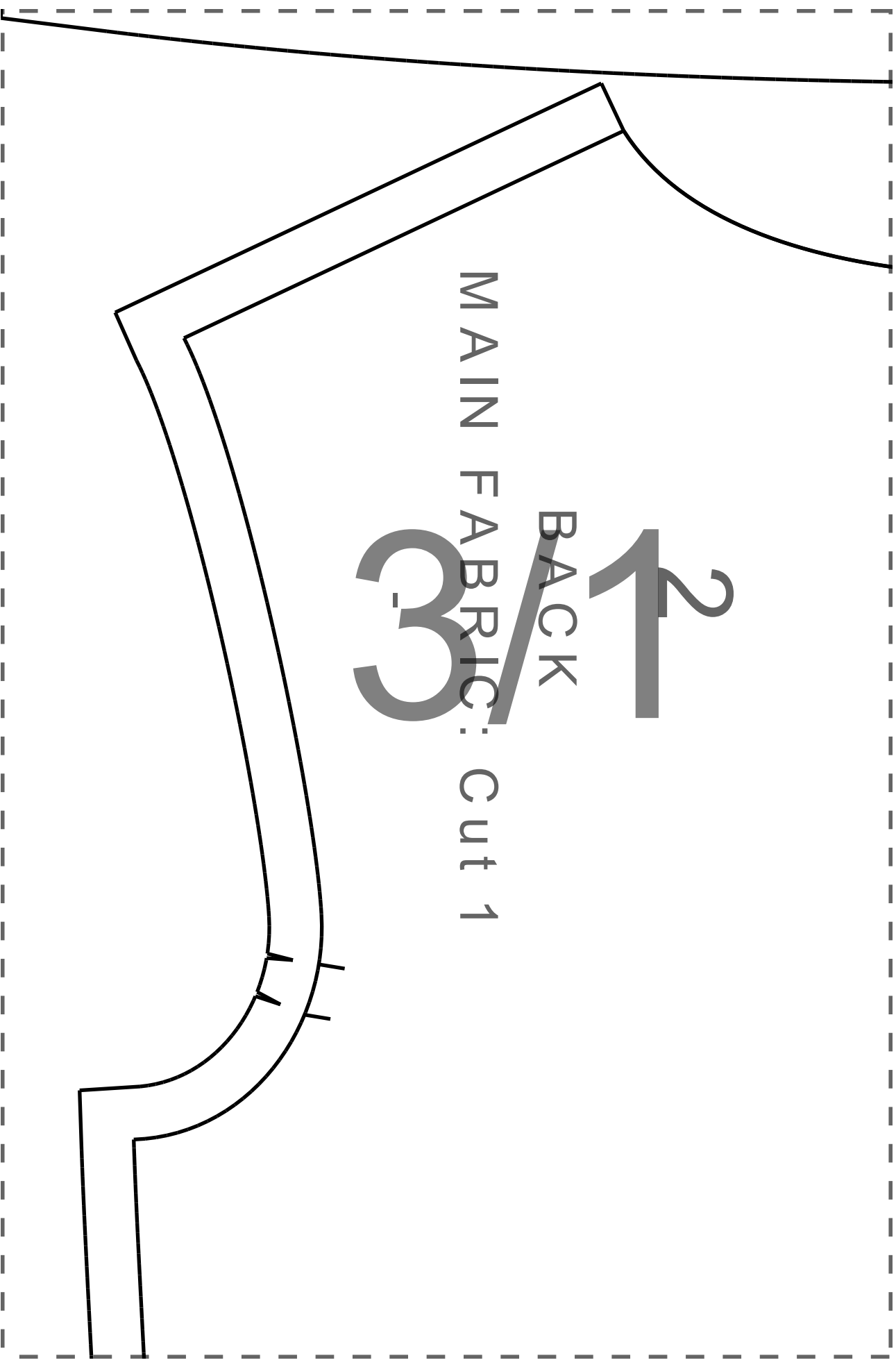


2/3

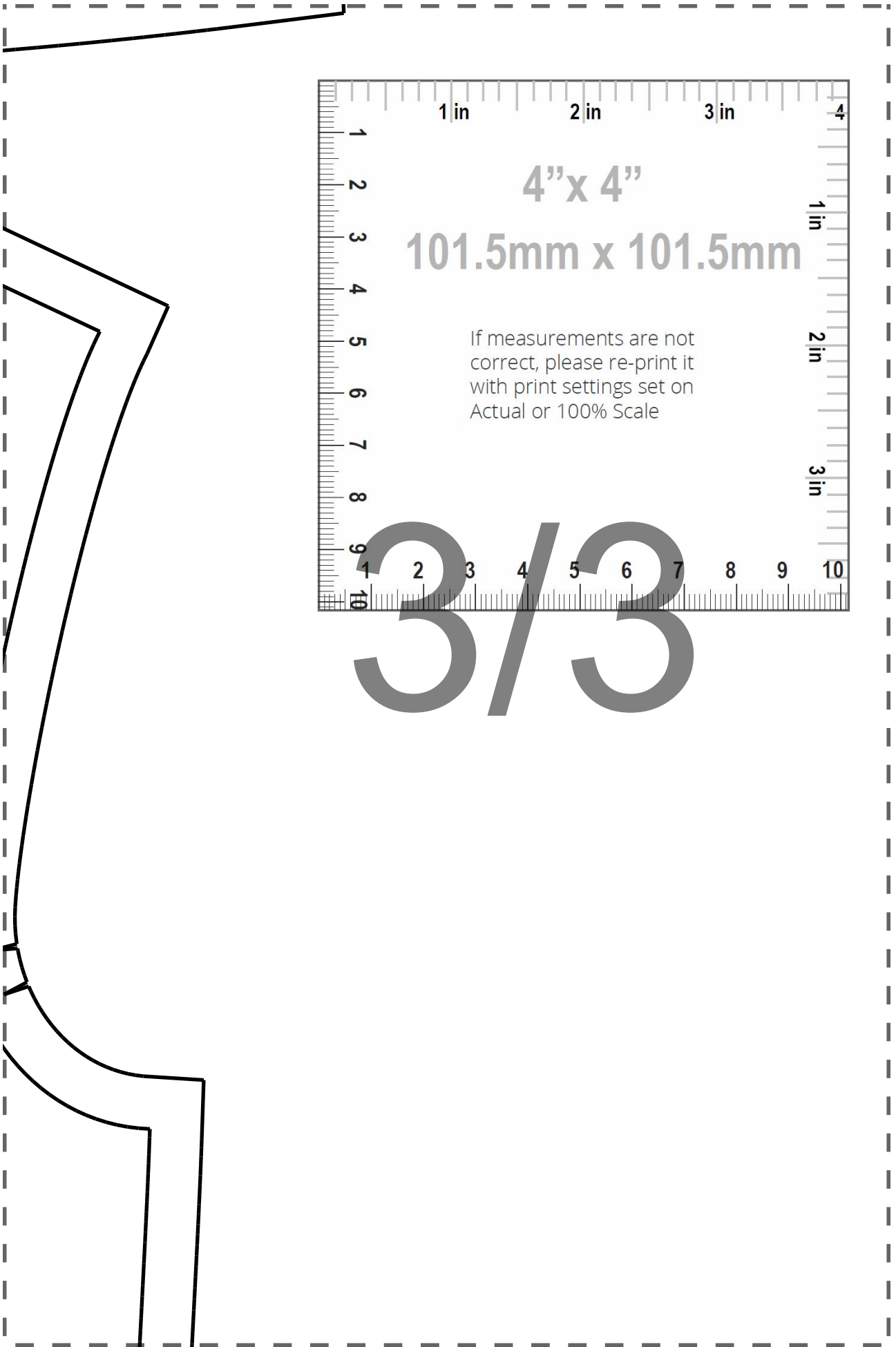
1
BACK

MAIN FABRIC: Cut 1

3







4/1

4/2



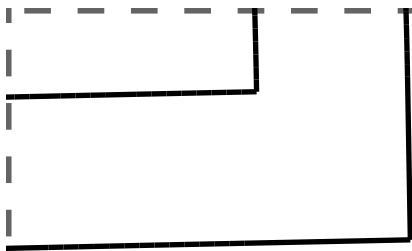


4/3

5/1



5/2



5/3