



Print this Calibration Test page first!

Size: Height: 170.00, Bust: 90.00, Waist: 68.50, Hips: 95.00
Pattern Name: -

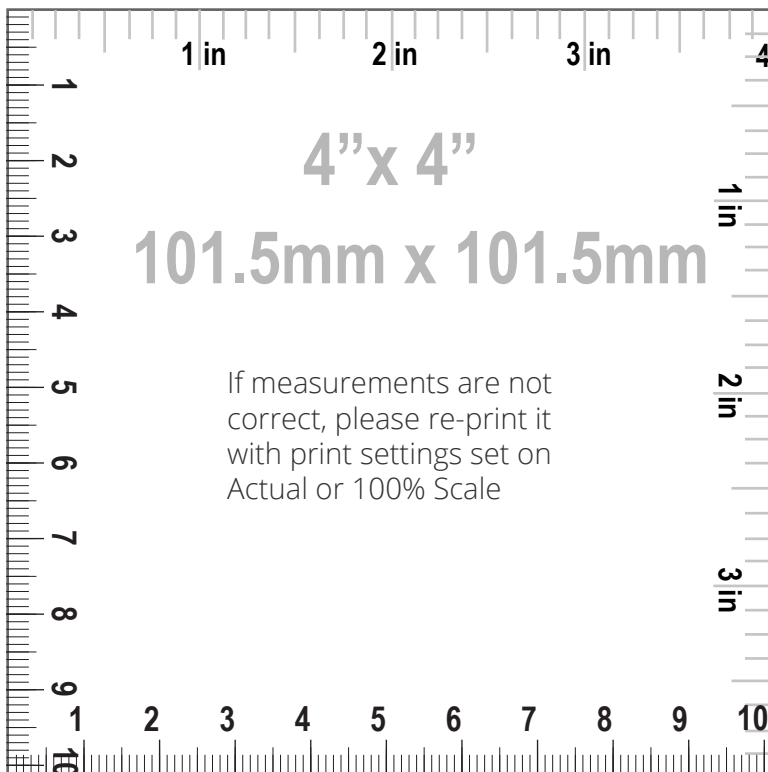
Notes

HOW TO PRINT



Printing

1. Once your Calibration Test Page has been printed, measure the 4"x 4" (10cm) scale box with a ruler. If the lengths match, you can confidently print your pattern. If the rulers do not match, set your print settings to 100% or Actual and retry.



Cutting

Your printouts will always have a dashed border to perfectly match your sheets. Cut off the right edge of each page. Be careful not to cut beyond the dashed mark, otherwise your patterns will not align accurately.



Taping

1. Group each sheet by the second number marked on each page i.e. in a group 1, there are: 1/1, 2/1, 3/1, 4/1, etc. In a group 2: 1/2, 2/2 etc.
2. Place page 1/1 on top of the page 2/1, overlapping the right side edge. Match corners and crosses and secure with a pin or tape. Then use a scotch tape to permanently attach the sheets together.



Pattern Name: -

Seam Allowance: 1.00 (0.39 in)

Pattern pieces:

1, FRONT, MAIN FABRIC: Cut 1

2, BACK, MAIN FABRIC: Cut 1

3, STRAP, MAIN FABRIC: Cut 2, FUSIBLE
INTERFACING: Cut 2

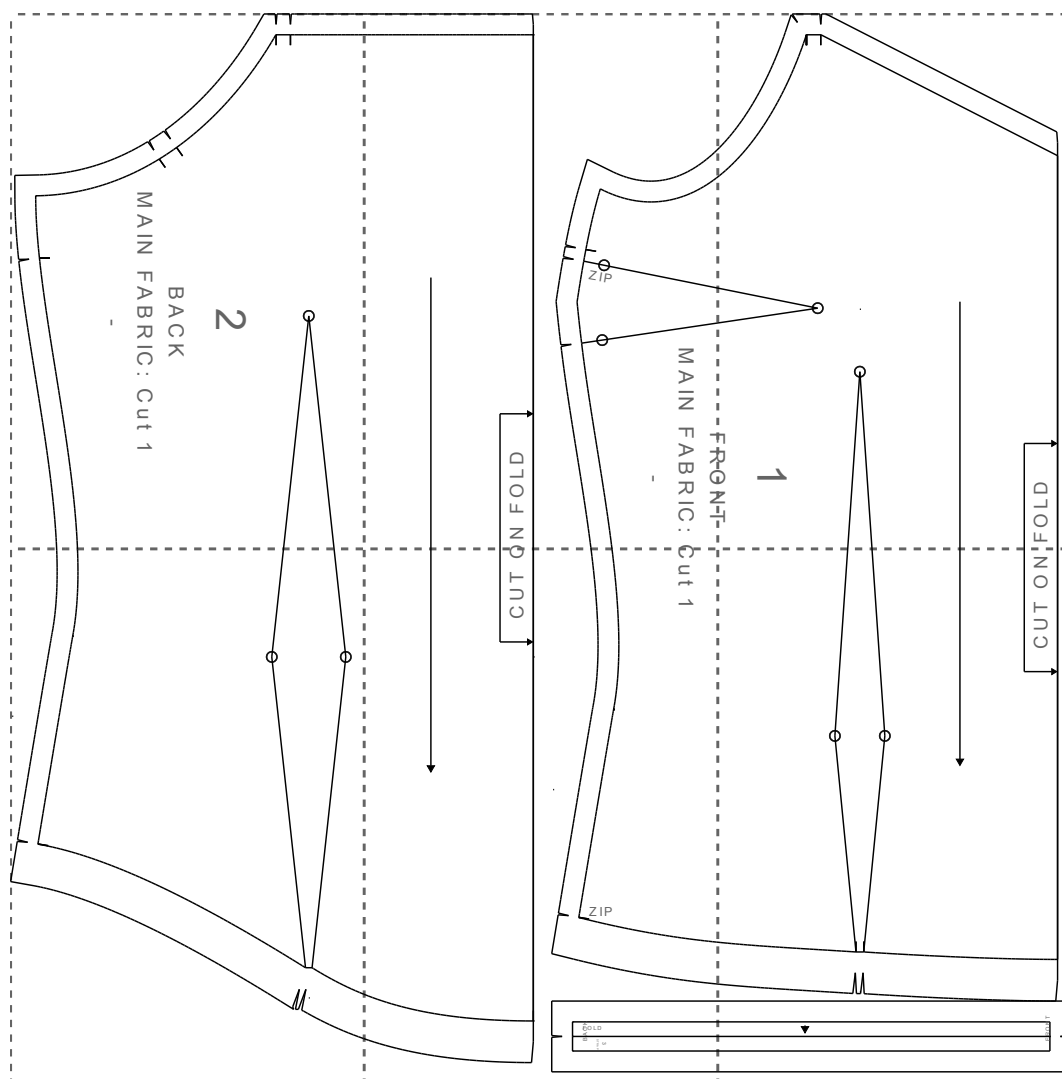
Pattern Specs (Circumferences are divided by 2):

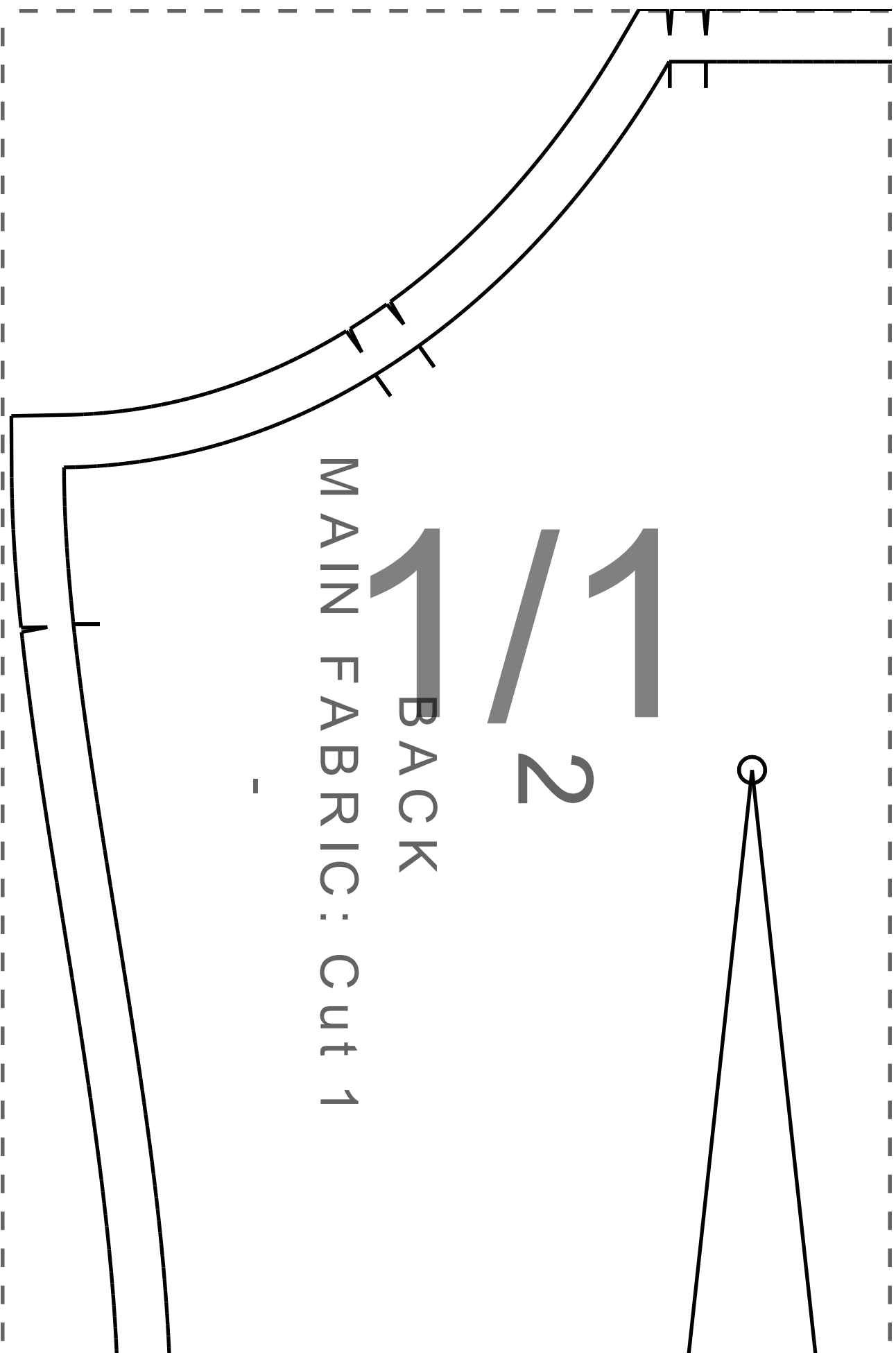
- | | |
|--|--|
| 1. Dress side invisible zipper length 30.00 (11.81 in) | 10. Hips 50.34 (19.82 in) |
| 2. Front length from HPS to hem 56.75 (22.34 in) | 11. Hemline sweep 46.62 (18.35 in) |
| 3. Across chest 47.02 (18.51 in) | 12. Front neck drop 18.13 (7.14 in) |
| 4. Center front length to hem 38.62 (15.20 in) | 13. Back neck drop 15.02 (5.91 in) |
| 5. Center back length to hem 47.38 (18.65 in) | 14. Apex to apex 19.00 (7.48 in) |
| 6. Across front 24.14 (9.50 in) | 15. Bust dart to bust dart 23.05 (9.07 in) |
| 7. Across back 24.74 (9.74 in) | 16. Strap width 0.70 (0.28 in) |
| 8. Side seam 31.43 (12.37 in) | 17. Strap length 22.94 (9.03 in) |
| 9. Waist 37.51 (14.77 in) | |

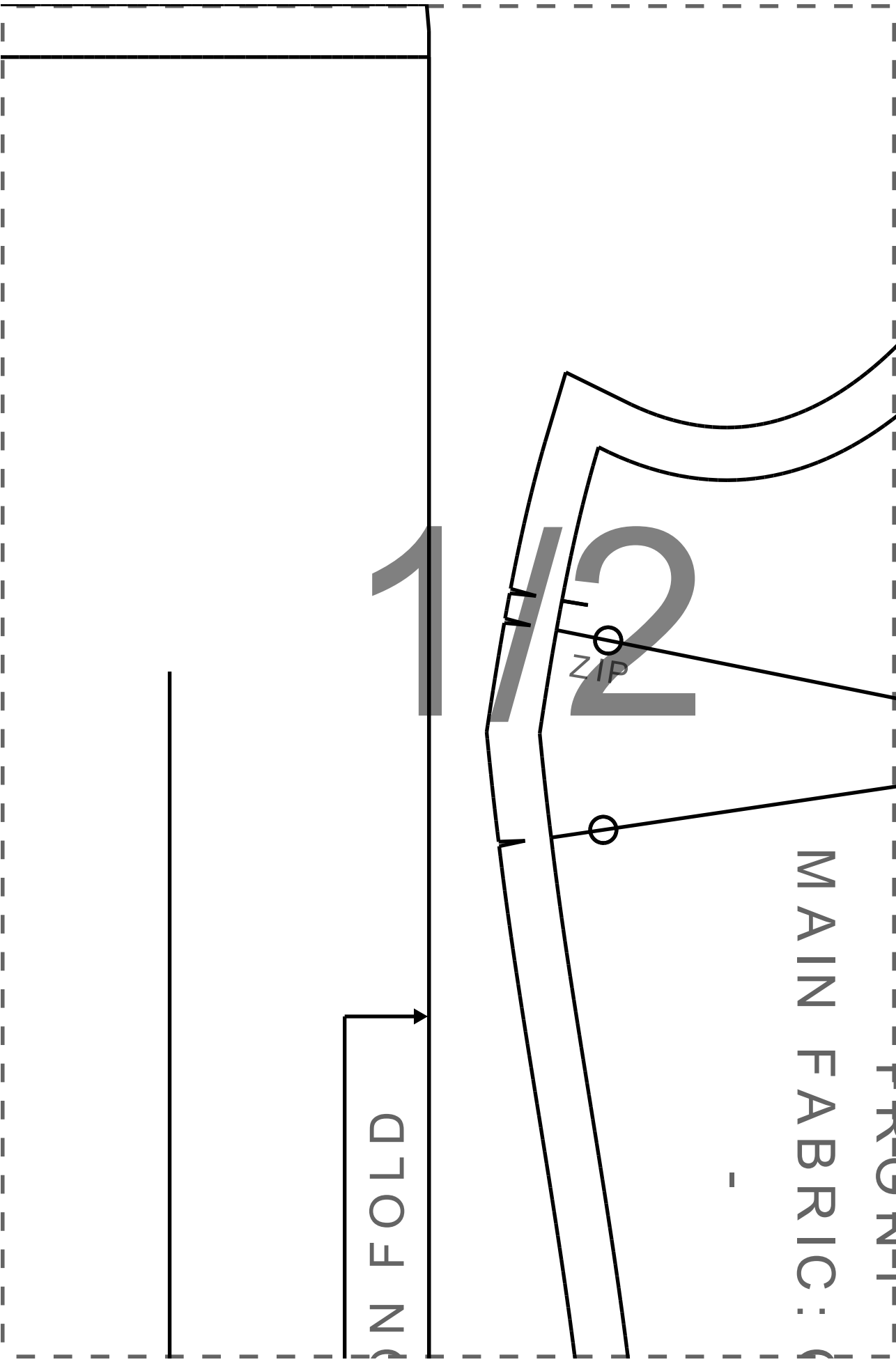


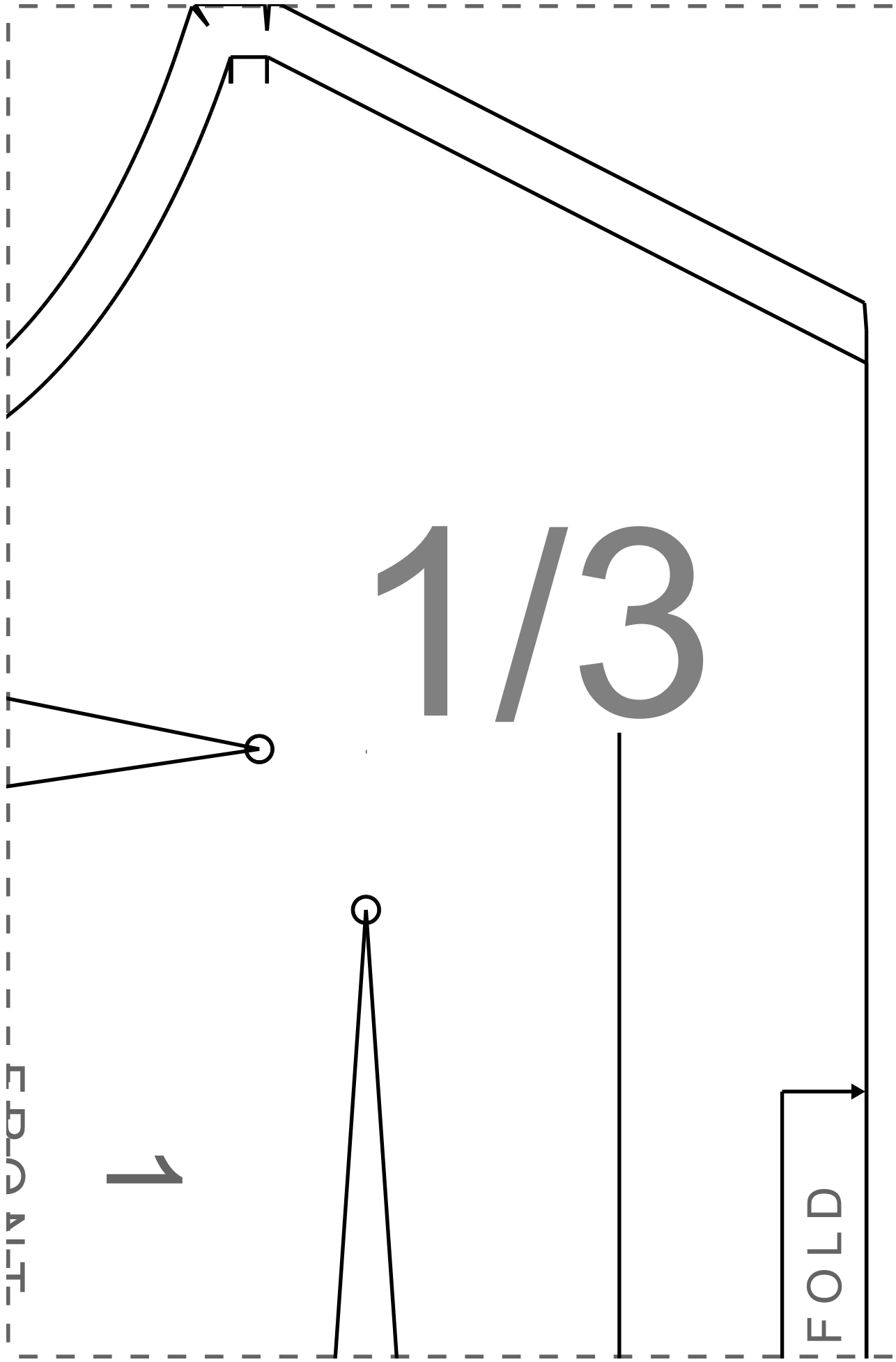
Paper Size: A4;

Print Actual Size (100% Scale);









2/1



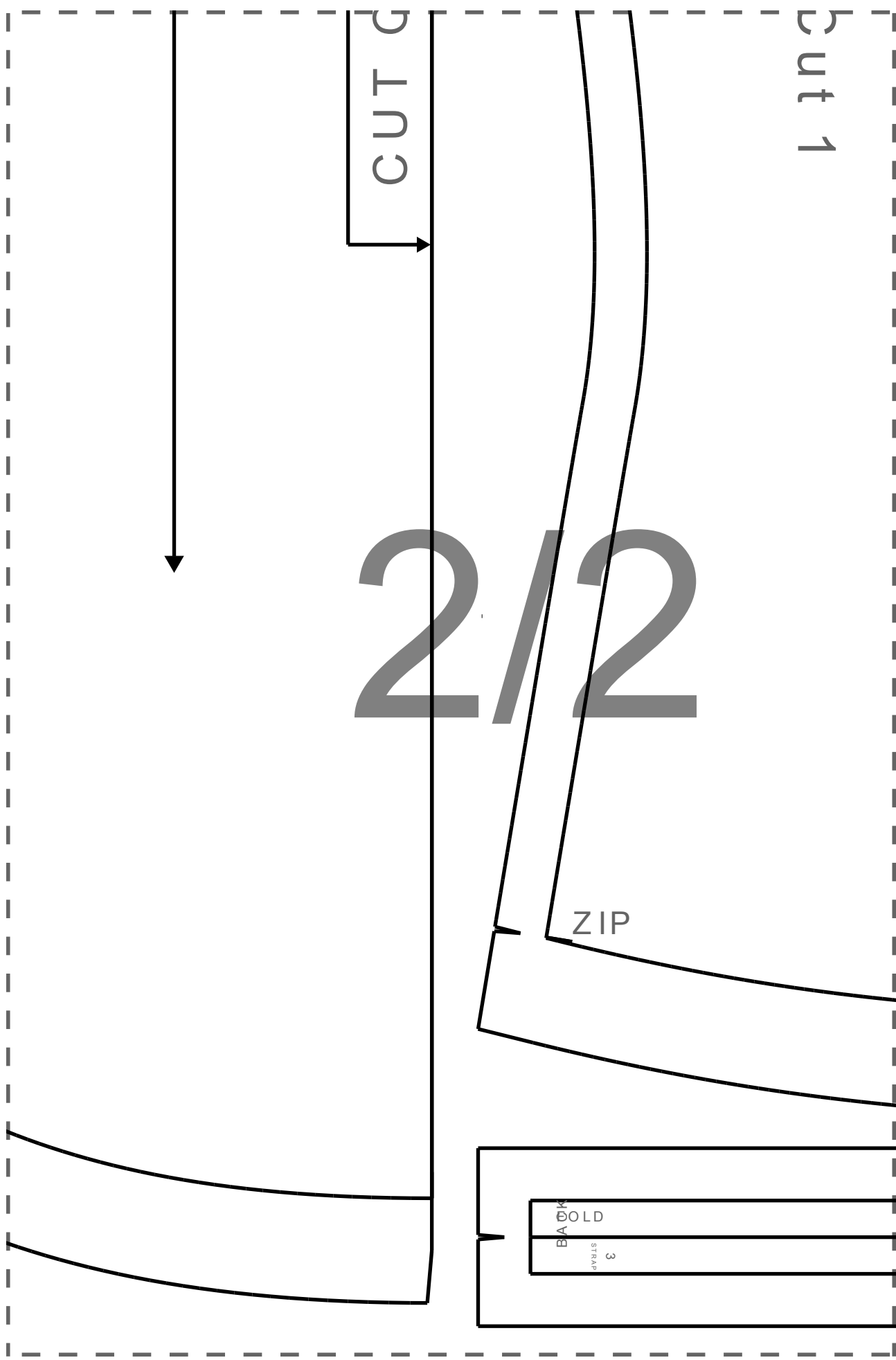
Cut 1

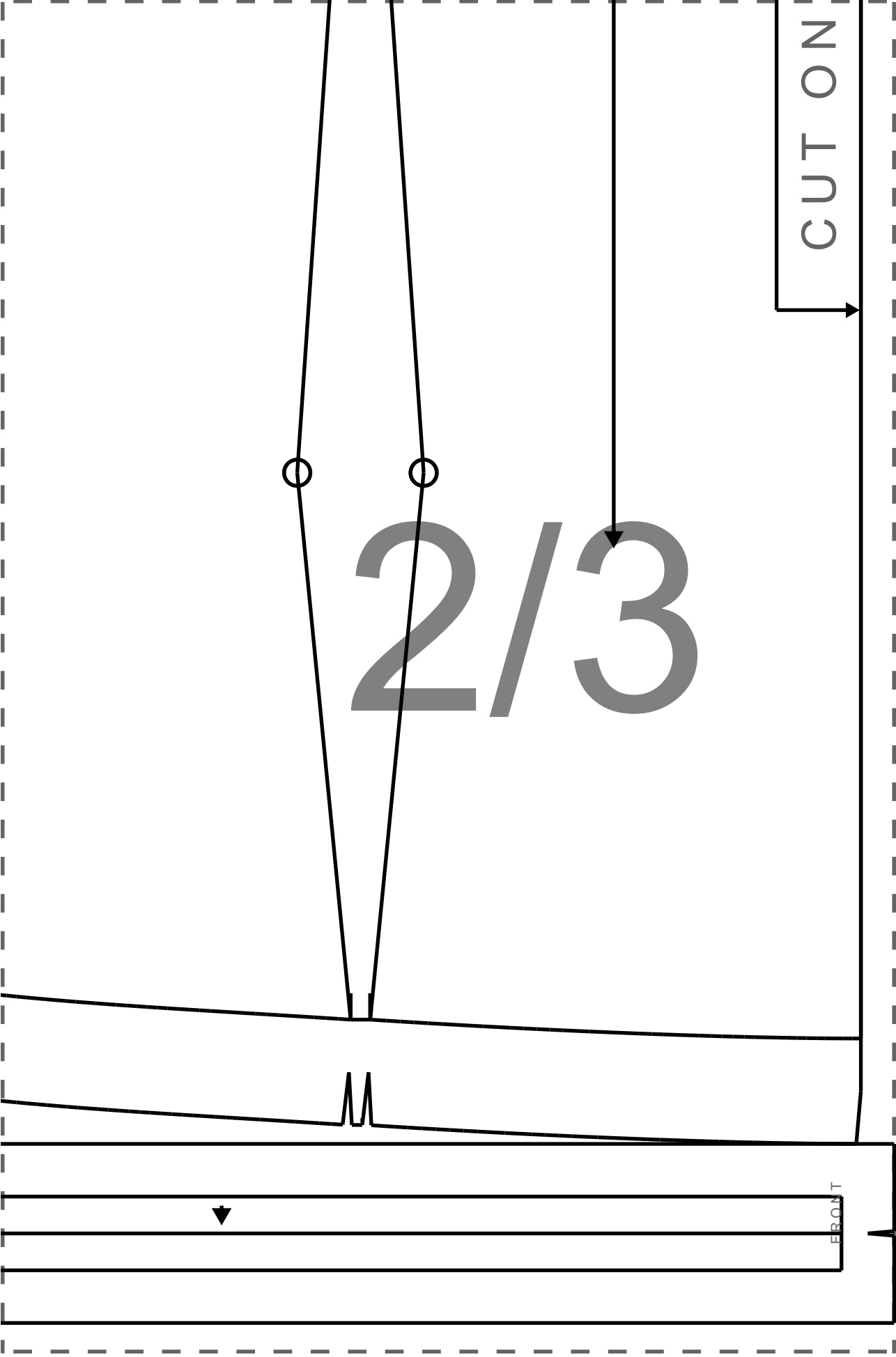
CUT 2

2/2

ZIP

BACK
STRAP
3





2/3

CUT ON

FRONT